

GSNA^{Q&As}

GIAC Systems and Network Auditor

Pass GIAC GSNA Exam with 100% Guarantee

Free Download Real Questions & Answers **PDF** and **VCE** file from:

<https://www.leads4pass.com/gsna.html>

100% Passing Guarantee
100% Money Back Assurance

Following Questions and Answers are all new published by GIAC
Official Exam Center

-  **Instant Download** After Purchase
-  **100% Money Back** Guarantee
-  **365 Days** Free Update
-  **800,000+** Satisfied Customers



QUESTION 1

SIMULATION

Fill in the blank with the appropriate term.

When two routers are used in a firewall configuration, the internal router is known as a _____ router.

Correct Answer: choke

When two routers are used in a firewall configuration, the internal router is known as a choke router. A choke router is an interior router present in the screened host firewall architecture. It is attached to the perimeter network and protects the

internal network from the Internet and the perimeter net.

A choke router is basically employed for the job of packet filtering for the firewall. It is also used to provide access to selected services that are outbound from the internal net to the Internet. These services may include outgoing Telnet, FTP,

WAIS, Archie, Gopher, etc.

QUESTION 2

DRAG DROP

You work as a Network Administrator for Tech Perfect Inc. The company has a Windows Active Directory-based single domain single forest network. The functional level of the forest is Windows Server 2003. The Sales Managers in the

company use laptops for connecting to the network. You are required to provide wireless connectivity on the network to all the Sales Managers. The security policy of the company dictates that the laptops should connect only to the access

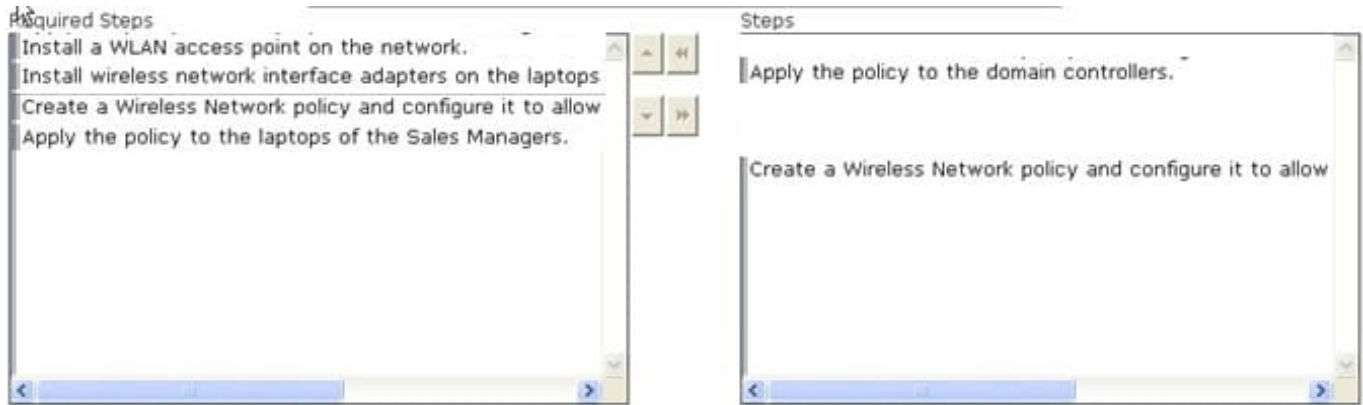
points on the network. The laptops should not be able to directly communicate with each other. You are required to implement the security policy of the company.

Choose the steps that you will take to accomplish the task.

Select and Place:

The screenshot shows a simulation interface with two main panels. The left panel, titled "Required Steps", is currently empty. The right panel, titled "Steps", contains a list of five tasks: "Create a Wireless Network policy and configure it to allow", "Apply the policy to the domain controllers.", "Install wireless network interface adapters on the laptops", "Apply the policy to the laptops of the Sales Managers.", and "Install a WLAN access point on the network." Below this list, the first step "Create a Wireless Network policy and configure it to allow" is partially visible again, suggesting a scrollable list of available steps to be dragged into the "Required Steps" panel.

Correct Answer:



In order to accomplish the task, you will have to take the following steps:

Install a WLAN access point on the network.

Install wireless network interface adapters on the laptops of the Sales Managers.

Create a Wireless Network policy and configure it to allow infrastructure networking only.

Apply the policy to the laptops of the Sales Managers.

Configuring the Wireless Network policy to allow infrastructure networking only will prevent the Sales Managers from directly communicating with each other.

Although they will be able to communicate with each other by using this configuration, the communication will be made through the access point.

The Ad hoc topology is used by wireless equipment, which are configured with the wireless network interface adapters, to communicate directly with each other.

QUESTION 3

Which of the following Windows processes supports creating and deleting processes and threads, running 16-bit virtual DOS machine processes, and running console windows?

- A. smss.exe
- B. services.exe
- C. csrss.exe
- D. System

Correct Answer: C

csrss.exe is a process that supports creating and deleting processes and threads, running 16-bit virtual DOS machine processes, and running console windows.

Answer: B is incorrect. This process is the Windows Service Controller, which is responsible for starting and stopping

system services running in the background.

Answer: A is incorrect. This process supports the programs needed to implement the user interface, including the graphics subsystem and the log on processes. Answer: D is incorrect. This process includes most kernel-level threads, which

manage the underlying aspects of the operating system.

QUESTION 4

Which of the following tools is a Windows-based commercial wireless LAN analyzer for IEEE 802.11b and supports all high level protocols such as TCP/IP, NetBEUI, and IPX?

- A. SamSpade
- B. John the Ripper
- C. Cheops-ng
- D. AiroPeek

Correct Answer: D

AiroPeek is a Windows-based commercial wireless LAN analyzer for IEEE 802.11b. It supports all high level protocols such as TCP/IP, NetBEUI, IPX, etc. It can be used to perform the following tasks:

1.
Site surveys
2.
Security assessments
3.
Channel scanning
4.
Real time and past capture
5.
WEP decryption
6.
Client troubleshooting
7.
WLAN monitoring
- 8.

Remote WLAN analysis

9.

Application layer protocol analysis tool Answer: A is incorrect. Sam Spade is a penetration-testing tool that is used in the discovery phase. It provides GUI graphics and a lot of functionalities. It can perform mainly whois queries, ping requests, DNS requests, tracerouting, OS finger-printing, zone transferring, SMTP mail relay checking, and Web site crawling and mirroring. Sam Spade runs on Windows operating systems. Answer: B is incorrect. John the Ripper is a fast password cracking tool that is available for most versions of UNIX, Windows, DOS, BeOS, and Open VMS. It also supports Kerberos, AFS, and Windows NT/2000/ XP/2003 LM hashes. John the Ripper requires a user to have a copy of the password file. Answer: C is incorrect. Cheops-ng is a network management tool that is used for mapping and monitoring networks. It can detect a network of a host and provides OS detection for hosts. On some services, Cheops-ng is able to see what program is running for a service and what is the version number of that program. The main difference between Cheops and Cheops-ng is that Cheops-ng does not have monitoring capabilities.

QUESTION 5

DRAG DROP

John works as a Network Administrator for Blue Well Inc. All client computers in the company run the Windows Vista operating system. He wants to view the status of malware protection.

What steps will he take to accomplish the task?

Select and Place:

Correct Answer:

John will click on the Security Center icon to view the malware status.

Malware is a combination of the terms malicious and software. It refers to a variety of hostile programs, such as a virus or a Trojan horse, designed to damage or disrupt a computer. It gathers information about a computer without the user's

permission or knowledge.

The Windows Update icon is used to manually update Windows Vista and configure the settings for the update.

The Power Options icon is used to configure the settings for various power plans.

[Latest GSNA Dumps](#)

[GSNA PDF Dumps](#)

[GSNA Practice Test](#)