

EX0-113^{Q&As}

TMap Next Foundation

Pass EXIN EX0-113 Exam with 100% Guarantee

Free Download Real Questions & Answers **PDF** and **VCE** file from:

<https://www.leads4pass.com/ex0-113.html>

100% Passing Guarantee
100% Money Back Assurance

Following Questions and Answers are all new published by EXIN
Official Exam Center

-  **Instant Download** After Purchase
-  **100% Money Back** Guarantee
-  **365 Days** Free Update
-  **800,000+** Satisfied Customers



QUESTION 1

What strongly benefits the quality characteristic 'testability'?

- A. the ease of operation of the system by the end-users
- B. the ease with which an interface can be created with another information system
- C. the ease with which the information system can be placed and maintained in an operational condition
- D. having a regression test and other testware

Correct Answer: D

QUESTION 2

Which of the following may be a consequence of not performing a pretest?

- A. A degradation in quality of the test basis.
- B. An increase in the number of test cases.
- C. Loss of time during the test execution.
- D. Increased risk of damage during production.

Correct Answer: C

QUESTION 3

What is to be preserved in the activity 'preserving the testware'?

- A. All testware created during the project
- B. A selection of the testware in consultation with the future administrator

Correct Answer: B

QUESTION 4

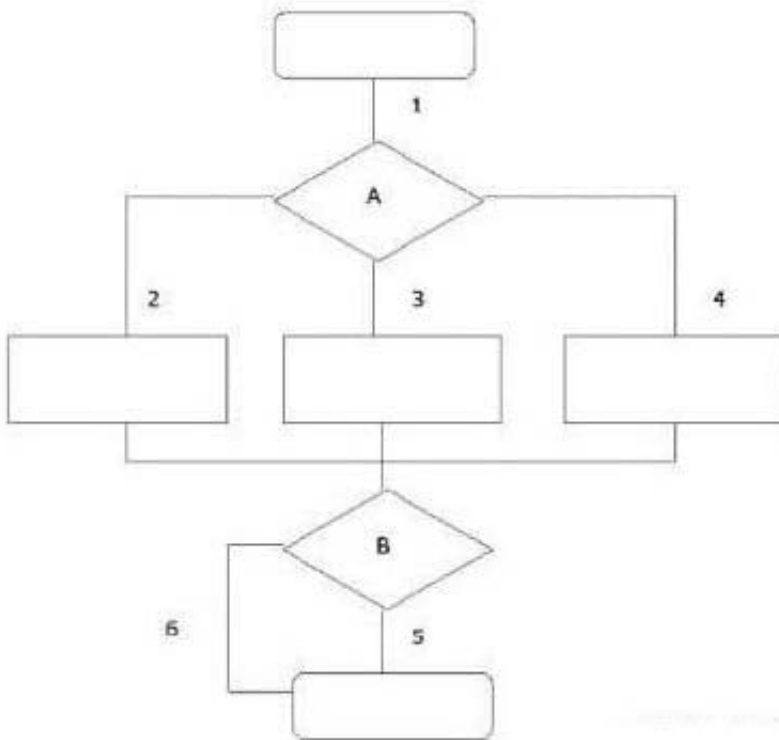
Which defect has an internal cause that can be solved within the test team?

- A. A defect in the test basis
- B. A defect in the test specification
- C. A defect in the test object

Correct Answer: B

QUESTION 5

See the illustration below:



What is the minimum number of logical test cases generated by the use of the Process Cycle Test if the coverage type paths test depth level 2 is used?

- A. 3
- B. 5
- C. 6
- D. 9

Correct Answer: C

[EX0-113 Practice Test](#)

[EX0-113 Study Guide](#)

[EX0-113 Braindumps](#)