

## EADA105<sup>Q&As</sup>

ArcGIS Desktop Associate 10.5

### Pass Esri EADA105 Exam with 100% Guarantee

Free Download Real Questions & Answers **PDF** and **VCE** file from:

<https://www.leads4pass.com/eada105.html>

100% Passing Guarantee  
100% Money Back Assurance

Following Questions and Answers are all new published by Esri Official Exam Center

-  **Instant Download** After Purchase
-  **100% Money Back** Guarantee
-  **365 Days** Free Update
-  **800,000+** Satisfied Customers



## QUESTION 1

A researcher is using ArcGIS Desktop. The researcher receives an assignment to create multiple printed map products with the same content but at different page sizes and map scales.

What should the researcher use to perform this task?

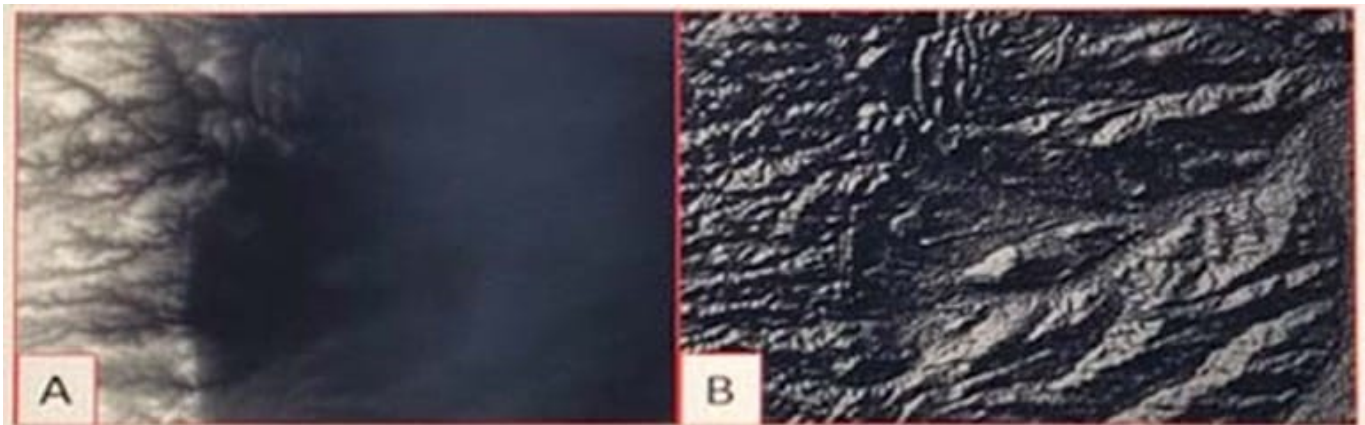
- A. ArcMap with the Toolshare folder structure and multiple map documents
- B. ArcGIS Pro with content connections and multiple map layouts
- C. ArcGIS Pro and import ArcMap documents from wherever the content was generated
- D. ArcMap with multiple map documents for each map product graticule

Correct Answer: C

---

## QUESTION 2

Refer to the exhibit.



Which raster function will display image A as image B?

- A. Shaded Relief
- B. Slope
- C. Hillshade
- D. Aspect

Correct Answer: D

Reference: <http://desktop.arcgis.com/en/arcmap/10.3/manage-data/raster-and-images/aspect-function.htm>

---

## QUESTION 3

An ArcMap user is displaying layers in ArcMap from several different geographic coordinate systems. Some data is shifted from where it should be. Several geographic coordinate system transformations are listed in the Geographic Coordinate Systems Transformations dialog box.

Which of the following workloads will allow the correct geographic transformation to be applied to resolve the data shift?

- A. Open the Layer Properties dialog box for each layer using the transformation > Change the transformation for the layer
- B. Select Transformations from the main menu in ArcMap > Change the transformation for the map document
- C. Open the Data Frame Properties dialog box > Change the transformation for the data frame
- D. For each data source using the transformation, change the transformation in the Catalog tree > Reload the corresponding layers

Correct Answer: C

Reference: <https://doc.arcgis.com/en/arcgis-online/reference/faq.htm#anchor71>

---

#### QUESTION 4

What should be used to make sure that an .mxd file can be opened in a previous version of ArcGIS?

- A. Save As command
- B. Create Map Package
- C. Export Map
- D. Save a Copy command

Correct Answer: A

Reference: <http://webcache.googleusercontent.com/search?q=cache:Yjzi6cSqP8IJ:desktop.arcgis.com/en/arcmap/10.3/map/working-with-arcmap/saving-amap.htm&client=opera&hl=en&gl=pk&strip=1&dvwsrc=0>

---

#### QUESTION 5

An ArcGIS Pro analyst wants to see only the rows in a table that meet one of a number of specified conditions. The analyst successfully tests the conditions by using selection expressions in Select Layer by Attribute.

What is an efficient way to persist the row choice conditions as separate objects that appear each time the project is opened?

- A. Select Layer by Attribute with each expression > Copy Rows to new tables
- B. Make Table View with each expression using a descriptive output view name > Save the project
- C. Select Layer by Attribute with each expression > Save the expressions to .exp files for re-use
- D. Table to Table with each expression

Correct Answer: A

[Latest EADA105 Dumps](#)

[EADA105 VCE Dumps](#)

[EADA105 Exam Questions](#)