

E20-670^{Q&As}

Networked Storage-CAS Installation/Troubleshooting Specialist

Pass EMC E20-670 Exam with 100% Guarantee

Free Download Real Questions & Answers **PDF** and **VCE** file from:

<https://www.leads4pass.com/e20-670.html>

100% Passing Guarantee
100% Money Back Assurance

Following Questions and Answers are all new published by EMC
Official Exam Center

-  **Instant Download** After Purchase
-  **100% Money Back** Guarantee
-  **365 Days** Free Update
-  **800,000+** Satisfied Customers



QUESTION 1

When will Garbage collection delete a Blob?

- A. When a CDF is deleted
- B. When the Centera is rebooted
- C. When the retention period expires on the Blob
- D. When all CDFs pointing to a Blob are removed

Correct Answer: D

QUESTION 2

What is the difference between the Root Switch and Cube Switch in Gen4?

- A. Same physical switch
- B. More ports in Root Switch
- C. Root Switch can support 2G
- D. Root Switch processor is faster

Correct Answer: A

QUESTION 3

A Centera has just been installed. Which Centera tool is used to test write and read to Centera?

- A. Centera ping
- B. Centera verify
- C. Centera viewer
- D. Centera parser

Correct Answer: B

QUESTION 4

The CE is having a problem installing a CUA on a Gen2 node. What could be the problem?

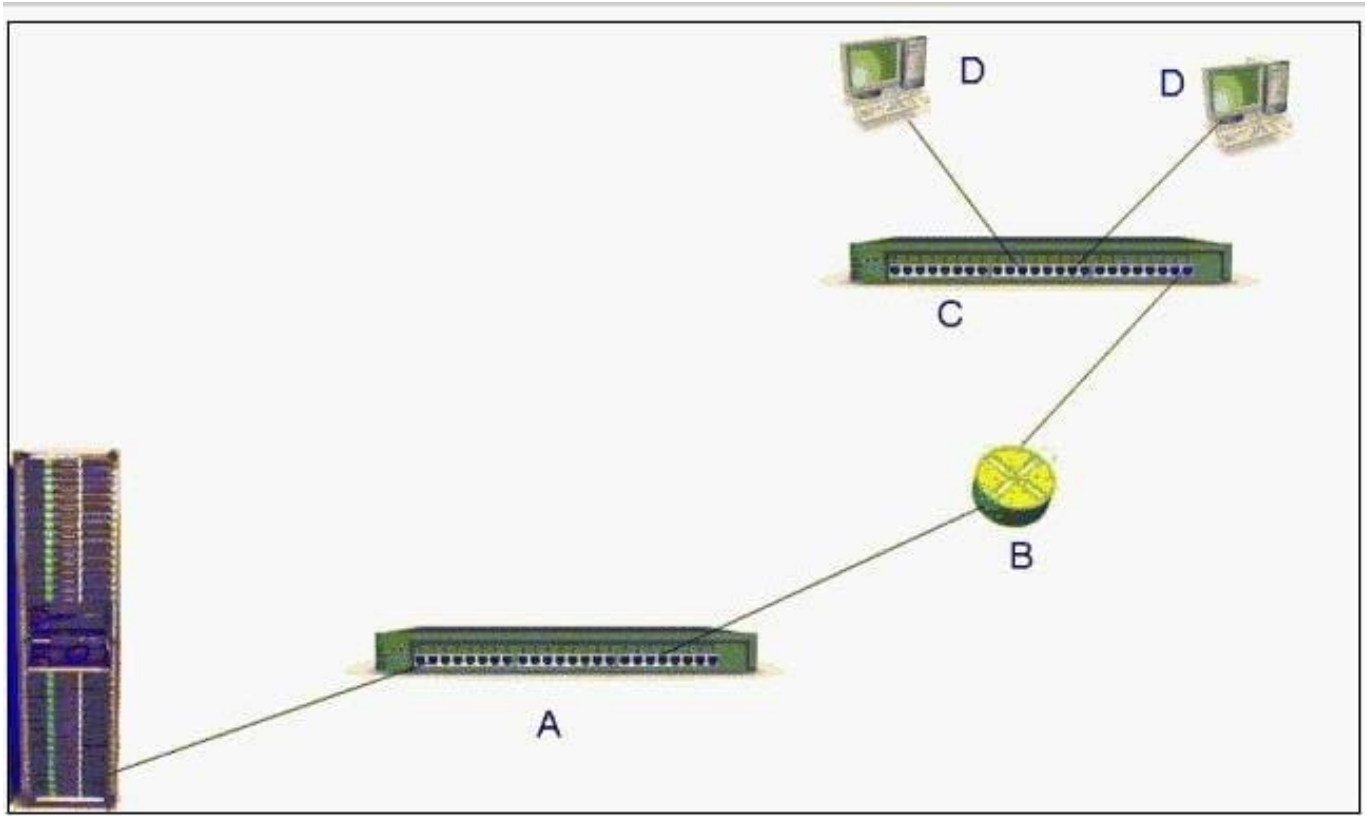
- A. Corrupted bin file
- B. Gen2 does not support CUA

- C. Centera viewer does not have the latest ServiceExt.jar
- D. Port that node is connected to on the Cube switch is disabled

Correct Answer: B

QUESTION 5

Exhibit



What are the components of a basic network?

- A. A=Hub B=Switch C=Hub D=Hosts
- B. A=Bridge B=NAT C=Switch D=Hosts
- C. A=Switch B=Router C=Switch D=Hosts
- D. A=Router B=Switch C=Router D=Hosts

Correct Answer: C