

E20-616^{Q&As}

Symmetrix Installation and Troubleshooting Specialist

Pass EMC E20-616 Exam with 100% Guarantee

Free Download Real Questions & Answers **PDF** and **VCE** file from:

<https://www.leads4pass.com/e20-616.html>

100% Passing Guarantee
100% Money Back Assurance

Following Questions and Answers are all new published by EMC
Official Exam Center

-  **Instant Download** After Purchase
-  **100% Money Back** Guarantee
-  **365 Days** Free Update
-  **800,000+** Satisfied Customers



QUESTION 1

A customer using a VMAX 20K containing 2 standard storage bays, each containing 90 drives wants to expand their capacity to 120 drives. What is the least expensive way to expand the existing configuration, but still a good choice for optimal performance in this configuration?

- A. Add four DAEs to each storage bay, each containing 15 drives
- B. Add eight DAEs to the first storage bay, each containing 15 drives
- C. Add two storage bays, one to each loop and each bay containing four DAEs with 15 drives each
- D. Add one storage bay containing eight DAEs with 15 drives each to the first loop

Correct Answer: A

QUESTION 2

Which component types are installed in a VMAX 10K Storage Bay?

- A. DAE, PDP, PDU, LCC
- B. DAE, PDP, PDU, SPS
- C. LCC, SPS, PDP, PDU
- D. DAE, FAN, PDU, SPS

Correct Answer: A

QUESTION 3

Which Enginuity supports IBM iSeries emulation D910?

- A. Enginuity 5876
- B. Enginuity 5874
- C. Enginuity 5875
- D. Enginuity 5773

Correct Answer: A

QUESTION 4

A CE is dispatched to perform an FCO replacing multiple SPS. After logging into a Symmetrix VMAX 40K running Enginuity 5876.159.102 Simplified SymmWin is automatically launched.

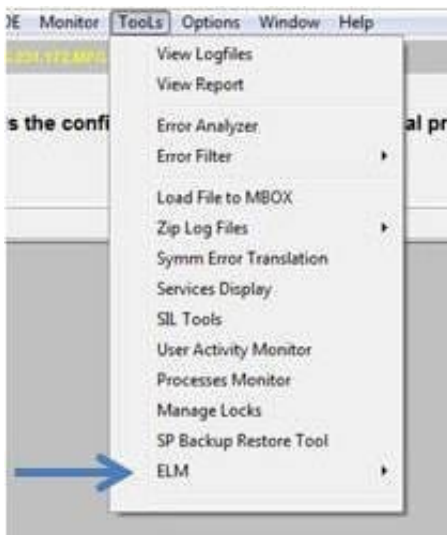
How should the CE proceed?

- A. Close Simplified SymmWin and select SymmWin from the desktop, then select Procedure Wizard
- B. Close Simplified SymmWin and select SymmWin from the desktop, then select Replace Bad FRU
- C. Log off then log on using a Break Fix Credential
- D. Simplified SymmWin does not support VMAX 40K

Correct Answer: A

QUESTION 5

Refer to the exhibit.



For what is the ELM tool used?

- A. Manage Symmetrix Licenses
- B. Environmental LCC Management
- C. ELM scheduler task
- D. Create Environmental scripts

Correct Answer: A

[Latest E20-616 Dumps](#)

[E20-616 VCE Dumps](#)

[E20-616 Study Guide](#)