

## E20-591<sup>Q&As</sup>

Backup and Recovery Solutions Exam for Technology Architects

**Pass EMC E20-591 Exam with 100% Guarantee**

Free Download Real Questions & Answers **PDF** and **VCE** file from:

<https://www.leads4pass.com/e20-591.html>

100% Passing Guarantee  
100% Money Back Assurance

Following Questions and Answers are all new published by EMC  
Official Exam Center

-  **Instant Download** After Purchase
-  **100% Money Back** Guarantee
-  **365 Days** Free Update
-  **800,000+** Satisfied Customers



## QUESTION 1

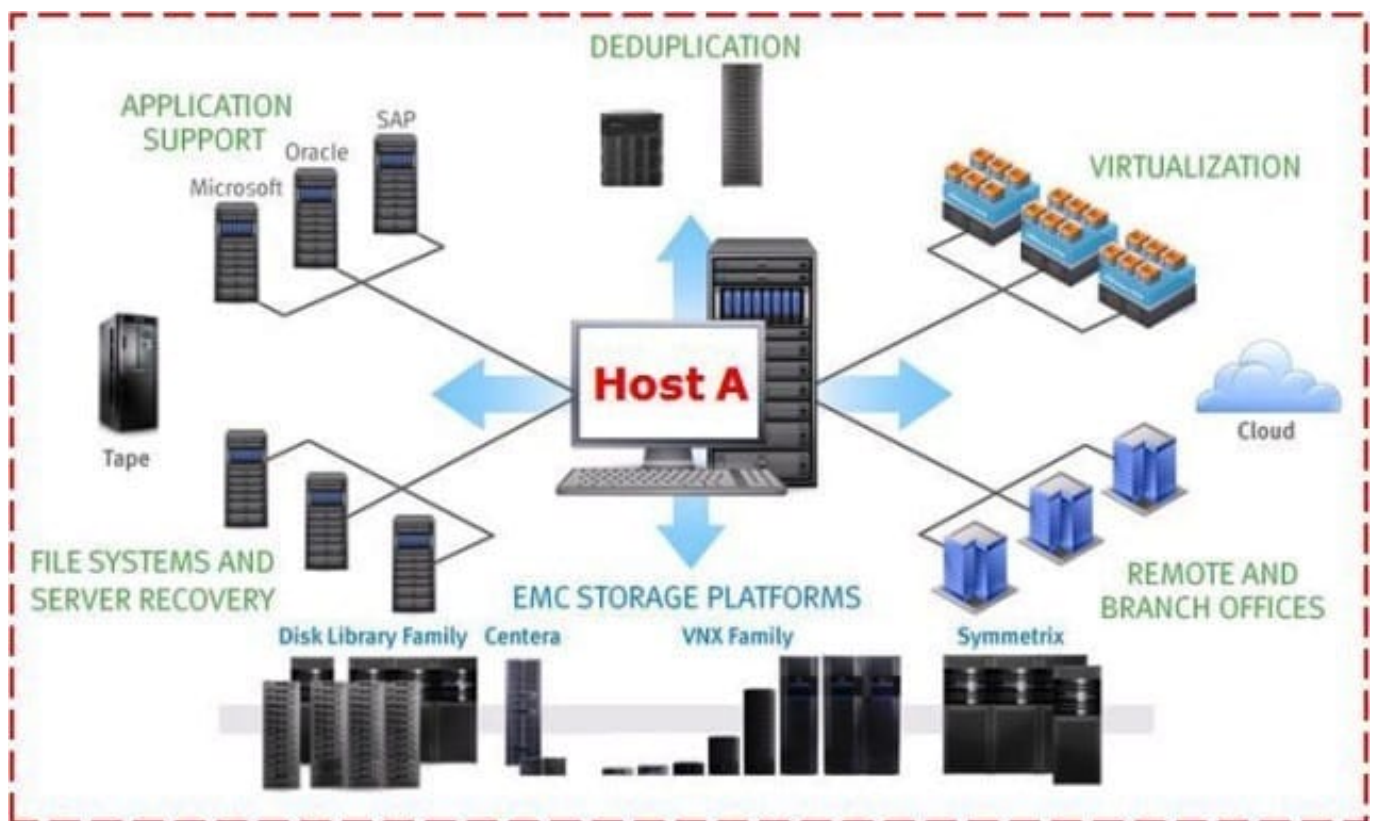
Where is most duplicate data on the Data Domain system discovered?

- A. Segment Locality
- B. Meta Logs
- C. Fingerprints
- D. Summary Vector

Correct Answer: A

## QUESTION 2

Based on the backup environment represented in the exhibit,



which EMC product would you recommend be installed on Host A?

- A. NetWorker
- B. Avamar
- C. Data Domain

D. HomeBase

Correct Answer: A

---

### QUESTION 3

By default, which database is automatically deployed on the Data Protection Advisor server?

- A. MSDE
- B. PostgreSQL
- C. MySQL
- D. Anywhere

Correct Answer: D

The DPA Server component is the core component of the product. The server manages all data stored within the system and provides the methods for the user to view data and to receive alerts. The Server component can run on either Solaris, Windows, or Linux. DPA can work with an embedded iAnywhere database that is automatically installed on the server during the install process, or with an external database that must be supplied and managed by the customer. DPA supports the following external databases: ?Oracle in Solaris environments ?Microsoft SQL Server in Windows environments ?Oracle and PostgreSQL in Linux environments

---

### QUESTION 4

An EMC Data Domain customer requires the usage of physical tape for long-term storage. How are backups moved from the Data Domain system to physical tape?

- A. Storage node reads data from the Data Domain system and writes it to physical tape
- B. Backup server instructs the Data Domain system to perform the operation
- C. Data Domain system moves virtual tape contents to the physical library using one of the back-end ports based on a schedule
- D. Data automatically flows to the physical tape when the Data Domain system is full

Correct Answer: A

---

### QUESTION 5

What is a benefit of storing backup data on an EMC NetWorker cloud device?

- A. Volumes are unlimited in size
- B. Volumes are automatically recycled
- C. Deletion of expired save sets automatically occurs once a week

D. Availability is guaranteed by pre-allocating storage space

Correct Answer: A

[Latest E20-591 Dumps](#)

[E20-591 PDF Dumps](#)

[E20-591 Practice Test](#)