

E20-591^{Q&As}

Backup and Recovery Solutions Exam for Technology Architects

Pass EMC E20-591 Exam with 100% Guarantee

Free Download Real Questions & Answers **PDF** and **VCE** file from:

<https://www.leads4pass.com/e20-591.html>

100% Passing Guarantee
100% Money Back Assurance

Following Questions and Answers are all new published by EMC
Official Exam Center

-  **Instant Download** After Purchase
-  **100% Money Back** Guarantee
-  **365 Days** Free Update
-  **800,000+** Satisfied Customers



QUESTION 1

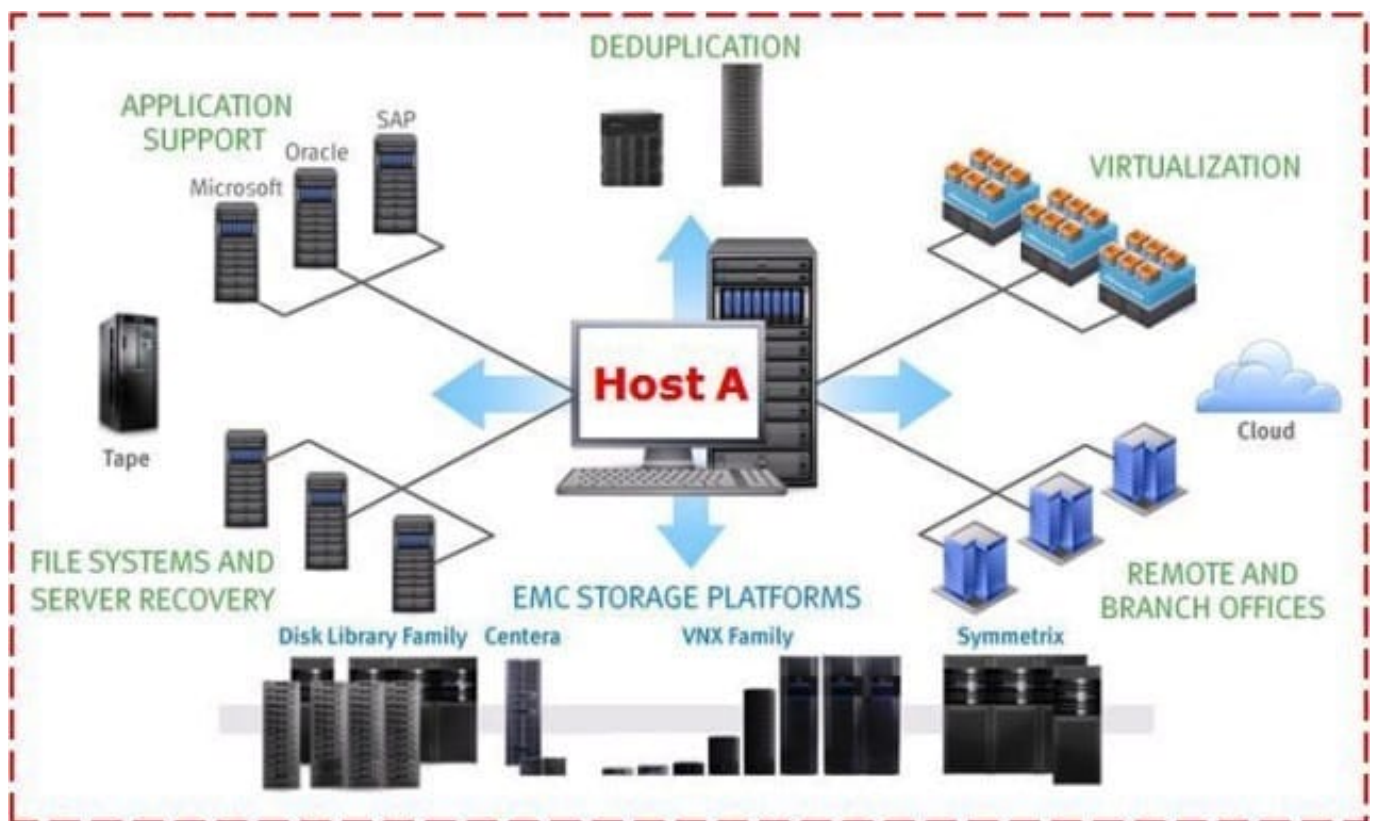
In an EMC Data Domain system, what is the first step when data is received using the SISL process?

- A. Data stored in non-volatile RAM
- B. Data is broken into segments
- C. Fingerprints for each segment are created
- D. Consecutive segments are compared

Correct Answer: A

QUESTION 2

Based on the backup environment represented in the exhibit,



which EMC product would you recommend be installed on Host A?

- A. NetWorker
- B. Avamar
- C. Data Domain

D. HomeBase

Correct Answer: A

QUESTION 3

In an EMC Data Protection Advisor environment, what is monitored by Predictive Analysis Engine rules?

- A. Missed service levels
- B. Apple MAC clients
- C. HomeBase server uptime
- D. Tape drive shoeshining statistics

Correct Answer: C

QUESTION 4

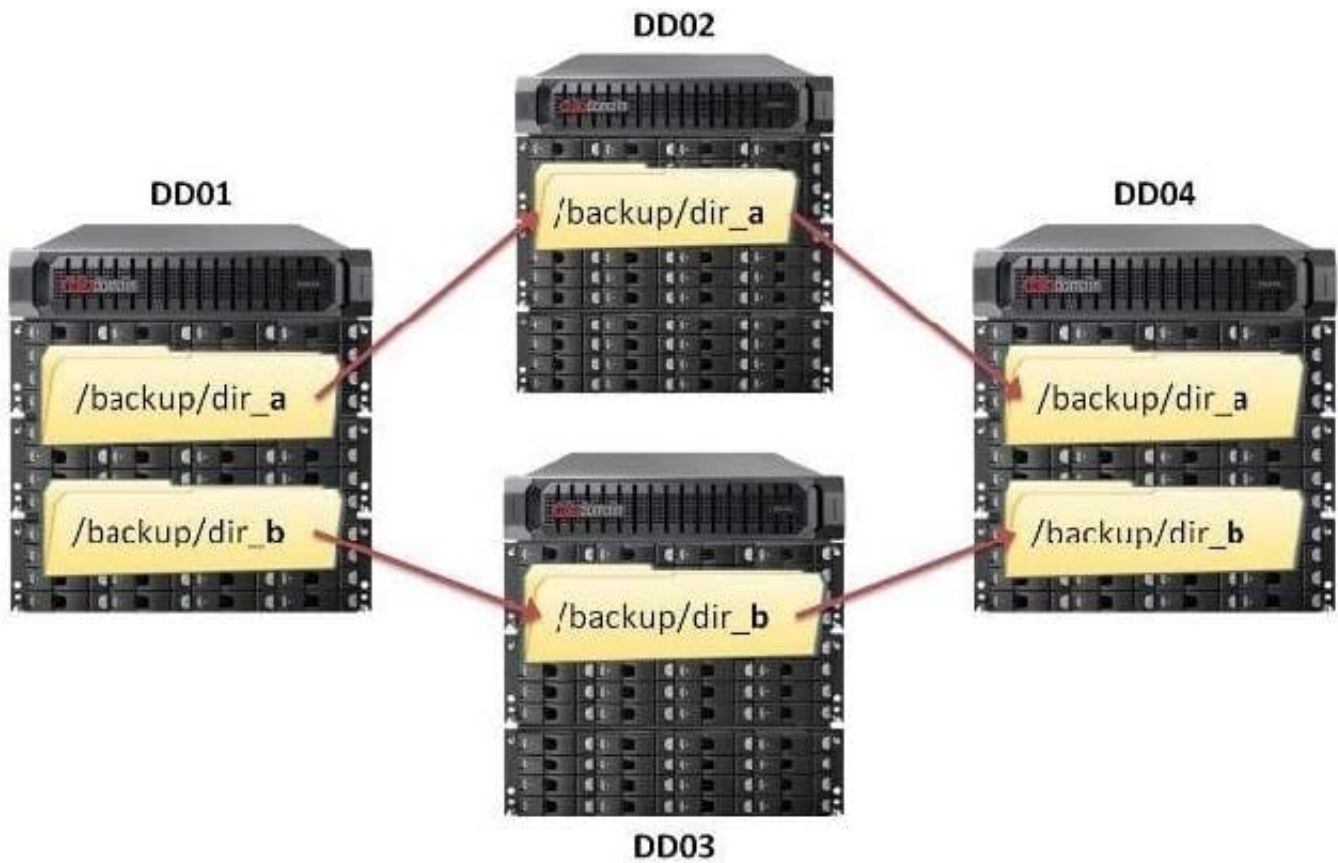
Which EMC Avamar interface can be used to restore data by the end-user without an Avamar user account?

- A. Desktop/Laptop
- B. Web Restore
- C. Avamar Administrator
- D. avatar

Correct Answer: A

QUESTION 5

How many replication contexts are configured in the EMC Data Domain environment represented in the exhibit?



- A. 1
- B. 2
- C. 3
- D. 4

Correct Answer: D

[Latest E20-591 Dumps](#)

[E20-591 Study Guide](#)

[E20-591 Exam Questions](#)