

## E20-495<sup>Q&As</sup>

Content Management xCelerated Composition Platform Application  
Development Exam

**Pass EMC E20-495 Exam with 100% Guarantee**

Free Download Real Questions & Answers **PDF** and **VCE** file from:

<https://www.leads4pass.com/e20-495.html>

100% Passing Guarantee  
100% Money Back Assurance

Following Questions and Answers are all new published by EMC  
Official Exam Center

- ⚙️ **Instant Download** After Purchase
- ⚙️ **100% Money Back** Guarantee
- ⚙️ **365 Days** Free Update
- ⚙️ **800,000+** Satisfied Customers



**QUESTION 1**

Which technique in Process Builder is used for pausing the parent process and then passing and reverting control back from a child process?

- A. using the child process template and assigning values for supervisor and child process name
- B. assigning the next activity in the parent process to initiate the child process
- C. defining the next activity in the parent process based on an event triggered by the child process
- D. using the dm\_SubProcessInvoke method in the parent auto activity to initiate the child process

Correct Answer: C

---

**QUESTION 2**

Which core xCP component is responsible for aggregating business process reporting information?

- A. Process Reporting Services
- B. Business Activity Monitor
- C. Process Engine
- D. Documentum Reporting Services

Correct Answer: B

---

**QUESTION 3**

Refer to the exhibits.

Exhibit A Exhibit B

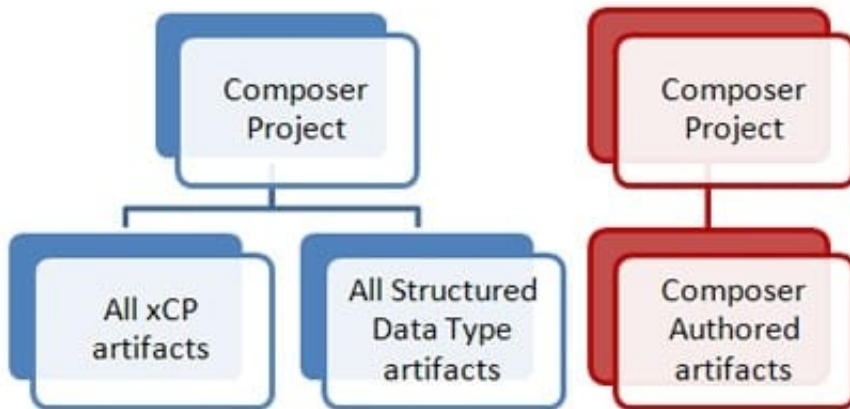
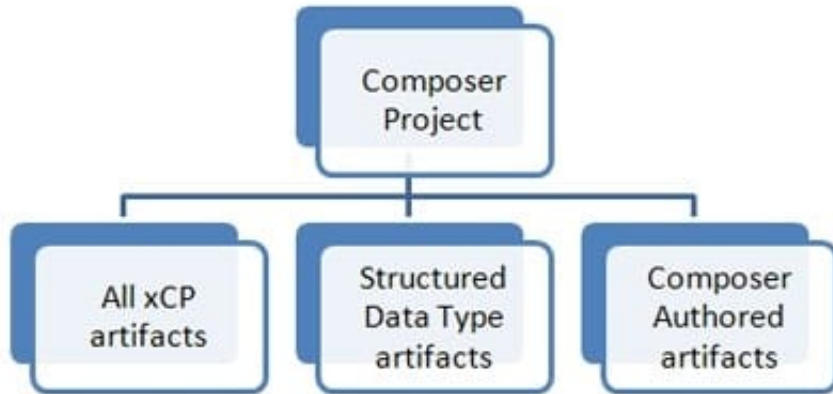
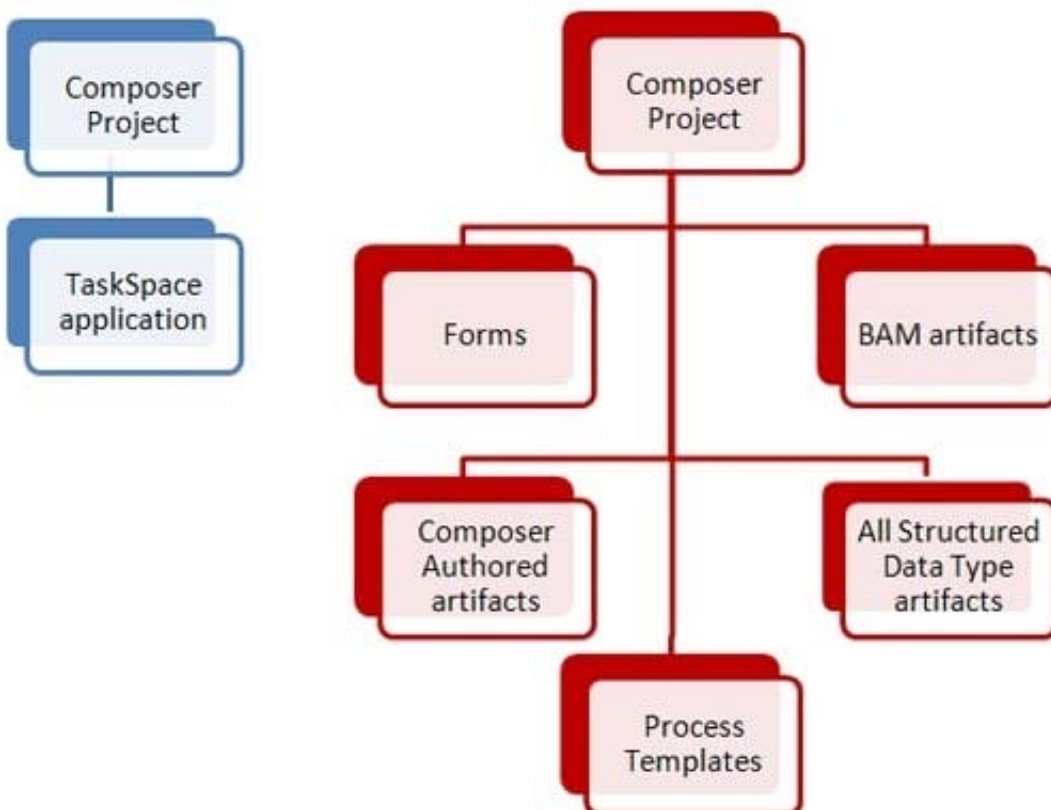


Exhibit C



Exhibit D



According to EMC Best Practices, which approach should be used when packaging xCP application artifacts in Composer projects?

- A.
- B.
- C.
- D.

Correct Answer: C

**QUESTION 4**

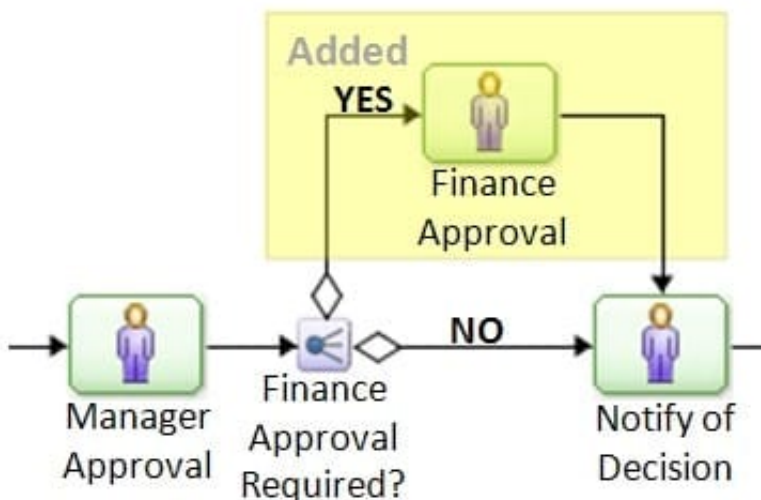
What is the EMC recommended approach to display different search forms on one search tab in a TaskSpace application?

- A. Configure an adaptor on the search template that changes the query being executed.
- B. Hide and show the search grid and search terms on the search template based on condition.
- C. Create a custom WDK component to render multiple search forms in a single view.
- D. Configure multiple search templates on the search tab in TaskSpace configuration.

Correct Answer: D

**QUESTION 5**

Refer to the exhibit.



A new activity is added to an existing process, along with a decision split. However, in the new version of the process, the activity Notify of Decision never appears in the user's inbox regardless of whether finance approval is required. No other changes were made to the process. What is the most likely cause of the issue?

- A. The transition definition was set incorrectly on the Finance Approval activity.

- B. The triggers were set incorrectly on the Notify of Decision activity.
- C. The triggers were set incorrectly on the Finance Approval activity.
- D. The transition definition was set incorrectly on the Finance Approval Required? activity.

Correct Answer: B

[E20-495 PDF Dumps](#)

[E20-495 VCE Dumps](#)

[E20-495 Practice Test](#)