

E20-385^{Q&As}

Data Domain Specialist Exam for Implementation Engineers

Pass EMC E20-385 Exam with 100% Guarantee

Free Download Real Questions & Answers **PDF** and **VCE** file from:

<https://www.leads4pass.com/e20-385.html>

100% Passing Guarantee
100% Money Back Assurance

Following Questions and Answers are all new published by EMC
Official Exam Center

-  **Instant Download** After Purchase
-  **100% Money Back** Guarantee
-  **365 Days** Free Update
-  **800,000+** Satisfied Customers



QUESTION 1

A company is replicating two specific directories between two EMC Data Domain systems using a 4 Mb/s WAN connection.

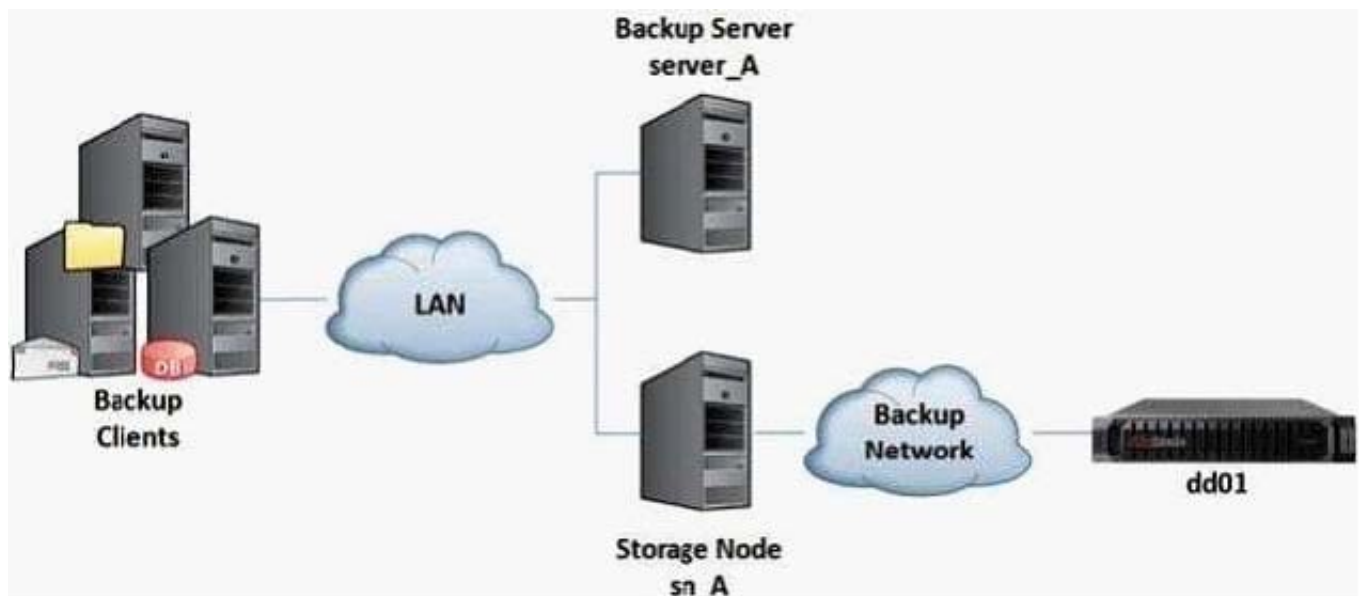
What can be done on the Data Domain systems to maximize replication performance?

- A. Enable low bandwidth optimization
- B. Implement collection replication
- C. Add more replication contexts
- D. Increase WAN bandwidth

Correct Answer: C

QUESTION 2

A customer is implementing an EMC Data Domain system in their EMC NetWorker environment using CIFS as illustrated in the exhibit.



A CIFS share named "bkp001" has been created on the Data Domain system. How should the backup device be configured in NetWorker?

- A. rd=sn_A:\\dd01\\bkp001
- B. rd=dd01:/bkp001
- C. rd=server_A:\\dd01\\bkp001

D. \\dd01\bkp001

Correct Answer: A

QUESTION 3

On an EMC Data Domain system, which licensed software option allows an administrator to protect data from deletion by the backup software?

- A. Retention Lock
- B. Snapshots
- C. Replicator
- D. Fastcopy

Correct Answer: A

QUESTION 4

An EMC NetWorker customer has recently implemented an EMC Data Domain system using DD Boost devices. A second Data Domain system was implemented at a remote site for replication purposes using clone-controlled replication.

As part of the implementation, Client Direct was enabled for some of the backup clients.

What is the result of enabling this setting on these clients?

- A. Backup data is sent directly to the Data Domain system
- B. Replication data is sent directly to the second Data Domain system at the same time the backup is occurring
- C. Cloned backup data can be directly recovered from the second Data Domain system
- D. Backup jobs can start without depending on the server configuration

Correct Answer: A

QUESTION 5

An EMC Data Domain customer has setup a DD VTL for their backup software. They created slots, drives, and tapes. The backup software shows the tape drives and the robot, but not the tapes.

Which step was missed on the Data Domain system?

- A. Import the virtual tapes in the VTL
- B. Configure Fibre Channel LUN masking
- C. Tape labels are not defined
- D. Incorrect media type is defined

Correct Answer: A

[E20-385 Practice Test](#)

[E20-385 Study Guide](#)

[E20-385 Braindumps](#)