



DP-200^{Q&As}

Implementing an Azure Data Solution

Pass Microsoft DP-200 Exam with 100% Guarantee

Free Download Real Questions & Answers **PDF** and **VCE** file from:

<https://www.lead4pass.com/dp-200.html>

100% Passing Guarantee
100% Money Back Assurance

Following Questions and Answers are all new published by Microsoft
Official Exam Center

-  **Instant Download** After Purchase
-  **100% Money Back** Guarantee
-  **365 Days** Free Update
-  **800,000+** Satisfied Customers





QUESTION 1

Note: This question is part of a series of questions that present the same scenario. Each question in the series contains a unique solution that might meet the stated goals. Some questions sets might have more than one correct solution, while others might not have a correct solution.

After you answer a question in this section, you will NOT be able to return to it. As a result, these questions will not appear in the review screen.

You have an Azure subscription that contains an Azure Storage account.

You plan to implement changes to a data storage solution to meet regulatory and compliance standards.

Every day, Azure needs to identify and delete blobs that were NOT modified during the last 100 days.

Solution: You apply an Azure policy that tags the storage account.

Does this meet the goal?

- A. Yes
- B. No

Correct Answer: B

Instead apply an Azure Blob storage lifecycle policy.

Reference: <https://docs.microsoft.com/en-us/azure/storage/blobs/storage-lifecycle-management-concepts?tabs=azure-portal>

QUESTION 2

Each day, company plans to store hundreds of files in Azure Blob Storage and Azure Data Lake Storage. The company uses the parquet format.

You must develop a pipeline that meets the following requirements:

Process data every six hours Offer interactive data analysis capabilities Offer the ability to process data using solid-state drive (SSD) caching Use Directed Acyclic Graph(DAG) processing mechanisms Provide support for REST API calls to monitor processes Provide native support for Python Integrate with Microsoft Power BI

You need to select the appropriate data technology to implement the pipeline.

Which data technology should you implement?

- A. Azure SQL Data Warehouse
- B. HDInsight Apache Storm cluster
- C. Azure Stream Analytics
- D. HDInsight Apache Hadoop cluster using MapReduce



E. HDInsight Spark cluster

Correct Answer: B

Storm runs topologies instead of the Apache Hadoop MapReduce jobs that you might be familiar with. Storm topologies are composed of multiple components that are arranged in a directed acyclic graph (DAG). Data flows between the components in the graph. Each component consumes one or more data streams, and can optionally emit one or more streams.

Python can be used to develop Storm components.

References: <https://docs.microsoft.com/en-us/azure/hdinsight/storm/apache-storm-overview>

QUESTION 3

You are developing a solution that will stream to Azure Stream Analytics. The solution will have both streaming data and reference data. Which input type should you use for the reference data?

- A. Azure Cosmos DB
- B. Azure Event Hubs
- C. Azure Blob storage
- D. Azure IoT Hub

Correct Answer: C

Stream Analytics supports Azure Blob storage and Azure SQL Database as the storage layer for Reference Data.

References: <https://docs.microsoft.com/en-us/azure/stream-analytics/stream-analytics-use-reference-data>

QUESTION 4

HOTSPOT

You are implementing mapping data flows in Azure Data Factory to convert daily logs of taxi records into aggregated datasets.

You configure a data flow and receive the error shown in the following exhibit.



Group by **Aggregates**

Grouped by: puLocationId, doLocationId

passengerCount ▼ sum(passengerCount) abc X + [copy] [trash]

'sum' expects 'number' type of argument

You need to resolve the error.

Which setting should you configure? To answer, select the appropriate setting in the answer area.

Hot Area:

Answer Area

source1 (Columns: 21 total) → Aggregate1 (Aggregating data by 'puLocationId doLocationId' producing columns 'passengerCount') → sink1 (Export data to DestinationDataset_a3g)

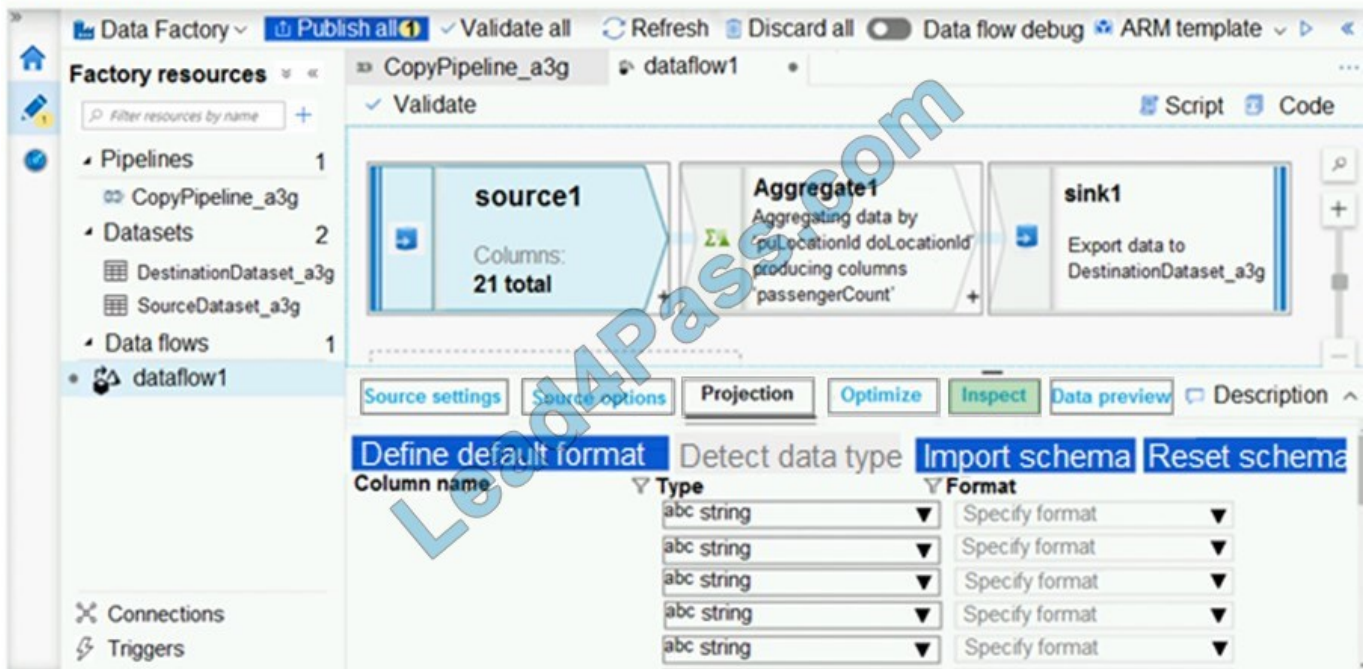
Source settings | Source options | Projection | Optimize | Inspect | Data preview | Description

Column name	Type	Format
abc	string	Specify format
abc	string	Specify format
abc	string	Specify format
abc	string	Specify format
abc	string	Specify format

Correct Answer:



Answer Area



The Inspect tab provides a view into the metadata of the data stream that you're transforming. You can see column counts, the columns changed, the columns added, data types, the column order, and column references. Inspect is a read-only view of your metadata. You don't need to have debug mode enabled to see metadata in the Inspect pane.

Number of columns		New ⁺ 1	Updated ⁺ 2	Unchanged ⁺ 4	Total 7
Order	Column	Type	Updated	Based on	
1	movie	string			
2	title	string	*	title	
3	genres	string			
4	year	long	*	year	
5	Rating	string			
6	Rotten Tomato	string			
7	Rotten Tomato	long	*	Rotten Tomato	

Reference: <https://docs.microsoft.com/en-us/azure/data-factory/concepts-data-flow-overview>

QUESTION 5

You have an Azure Stream Analytics job that receives clickstream data from an Azure event hub.

You need to define a query in the Stream Analytics job. The query must meet the following requirements:

1.

Count the number of clicks within each 10-second window based on the country of a visitor.



2.

Ensure that each click is NOT counted more than once. How should you define the query?

A. SELECT Country, Count(*) AS Count FROM ClickStream TIMESTAMP BY CreatedAt GROUP BY Country, TumblingWindow(second, 10)

B. SELECT Country, Count(*) AS Count FROM ClickStream TIMESTAMP BY CreatedAt GROUP BY Country, SessionWindow(second, 5, 10)

C. SELECT Country, Avg(*) AS Average FROM ClickStream TIMESTAMP BY CreatedAt GROUP BY Country, SlidingWindow(second, 10)

D. SELECT Country, Avg(*) AS Average FROM ClickStream TIMESTAMP BY CreatedAt GROUP BY Country, HoppingWindow(second, 10, 2)

Correct Answer: A

Tumbling window functions are used to segment a data stream into distinct time segments and perform a function against them, such as the example below. The key differentiators of a Tumbling window are that they repeat, do not overlap,

and an event cannot belong to more than one tumbling window.

Example:

Incorrect Answers:

B: Session windows group events that arrive at similar times, filtering out periods of time where there is no data.

C: Sliding windows, unlike Tumbling or Hopping windows, output events only for points in time when the content of the window actually changes. In other words, when an event enters or exits the window. Every window has at least one event, like in the case of Hopping windows, events can belong to more than one sliding window.

D: Hopping window functions hop forward in time by a fixed period. It may be easy to think of them as Tumbling windows that can overlap, so events can belong to more than one Hopping window result set. To make a Hopping window the same as a Tumbling window, specify the hop size to be the same as the window size.

Reference: <https://docs.microsoft.com/en-us/azure/stream-analytics/stream-analytics-window-functions>

[Latest DP-200 Dumps](#)

[DP-200 PDF Dumps](#)

[DP-200 Braindumps](#)



To Read the [Whole Q&As](#), please purchase the [Complete Version](#) from [Our website](#).

Try our product !

100% Guaranteed Success
100% Money Back Guarantee
365 Days Free Update
Instant Download After Purchase
24x7 Customer Support
Average 99.9% Success Rate
More than 800,000 Satisfied Customers Worldwide
Multi-Platform capabilities - [Windows](#), [Mac](#), [Android](#), [iPhone](#), [iPod](#), [iPad](#), [Kindle](#)

We provide exam PDF and VCE of Cisco, Microsoft, IBM, CompTIA, Oracle and other IT Certifications. You can view Vendor list of All Certification Exams offered:

<https://www.lead4pass.com/allproducts>

Need Help

Please provide as much detail as possible so we can best assist you.
To update a previously submitted ticket:



 <p>One Year Free Update Free update is available within One Year after your purchase. After One Year, you will get 50% discounts for updating. And we are proud to boast a 24/7 efficient Customer Support system via Email.</p>	 <p>Money Back Guarantee To ensure that you are spending on quality products, we provide 100% money back guarantee for 30 days from the date of purchase.</p>	 <p>Security & Privacy We respect customer privacy. We use McAfee's security service to provide you with utmost security for your personal information & peace of mind.</p>
---	---	--

Any charges made through this site will appear as Global Simulators Limited.
All trademarks are the property of their respective owners.
Copyright © lead4pass, All Rights Reserved.