

DES-5221^{Q&As}

Specialist Implementation Engineer Data Center Networking Exam

Pass EMC DES-5221 Exam with 100% Guarantee

Free Download Real Questions & Answers **PDF** and **VCE** file from:

<https://www.leads4pass.com/des-5221.html>

100% Passing Guarantee
100% Money Back Assurance

Following Questions and Answers are all new published by EMC
Official Exam Center

-  **Instant Download** After Purchase
-  **100% Money Back** Guarantee
-  **365 Days** Free Update
-  **800,000+** Satisfied Customers



QUESTION 1

When configuring a vrf instance for the management interface that has been in use, what step must be done first to configure it?

- A. Configure a management route
- B. Remove the default route
- C. Remove all configured settings
- D. Configure an IP Address

Correct Answer: C

QUESTION 2

You have been asked to examine a BGP configuration for a co-worker who is having difficulty establishing BGP peering. The address shown is that of the neighbor's Lo0 interface. Given the configuration shown, what would be your recommendation?

```
S3(config-router-bgp-65042)# neighbor 192.168.32.1 S3(config-router-neighbor)# remote-as 65042
```

- A. Modify the existing configuration to be: S3(config-router-bgp-65042)# neighbor 192.168.32.1/24 S3(config-router-neighbor)# peer-as 65042
- B. Add the following to the existing configuration: S3(config-router-neighbor)# update-source loopback 0 S3(config-router-neighbor)# no shutdown
- C. Issue the no shutdown command and verify that the BGP state is ESTABLISHED
- D. Issue the no shutdown command and verify that the BGP state is ACTIVE

Correct Answer: C

Reference: <https://www.dell.com/support/manuals/us/en/04/networking-z9100/os10-enterprise-user-guide-10.4.0e-r3-pub/enable-bgp?guid=guid-5c64be15-4ebd-4372-a442-67f47b0f14e5andlang=en-us>

QUESTION 3

The network administrator wants to configure RADIUS authentication for VTY access, and for console access to use the local configuration. Which two commands should be used to achieve this goal?

- A. aaa authentication login vty group radius aaa authentication login console local
- B. aaa authentication login default group radius aaa authentication login console local
- C. aaa authentication login vty radius aaa authentication login console group local
- D. aaa authentication login default group radius aaa authentication login console group local

Correct Answer: B

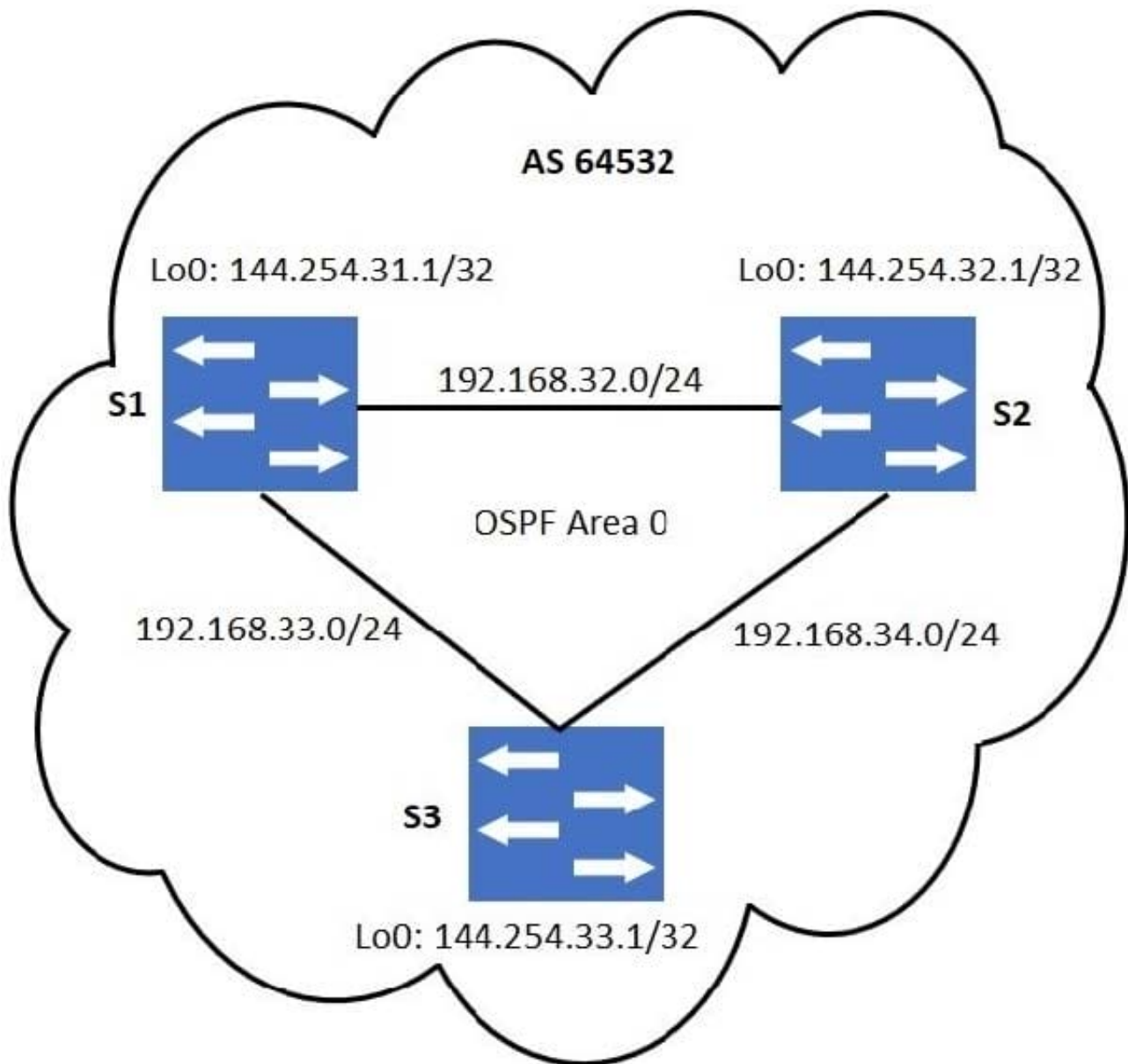
QUESTION 4

Which LSA type provides information necessary to reach routers originating type 5 LSA's in other areas?

- A. ASBR-Summary (Type 4)
- B. Summary (Type 3)
- C. NSSA (Type 7)
- D. Router (Type 1)

Correct Answer: A

QUESTION 5



Refer to the exhibit.

No static routing has been configured. For iBGP loopback-based peering, which statement is correct?

- A. It is not necessary for the routing table on S1 to have an entry for the loopback network of S3.
- B. S1 should have the Loopback network of S3 in its routing table for loopback-based peering.
- C. For iBGP peering, physical interface addresses must be used.
- D. A static route on S1 to 144.254.32.1/32 will eliminate the need for loopback-based peering with S3.

Correct Answer: B