

DES-5121^{Q&As}

Specialist - Implementation Engineer - Campus Networking Exam

Pass EMC DES-5121 Exam with 100% Guarantee

Free Download Real Questions & Answers **PDF** and **VCE** file from:

<https://www.leads4pass.com/des-5121.html>

100% Passing Guarantee
100% Money Back Assurance

Following Questions and Answers are all new published by EMC
Official Exam Center

-  **Instant Download** After Purchase
-  **100% Money Back** Guarantee
-  **365 Days** Free Update
-  **800,000+** Satisfied Customers



QUESTION 1

Which Layer 3 protocol does MLAG support?

- A. None
- B. Static Routing
- C. OSPF
- D. RIPv2

Correct Answer: A

Reference: http://files.rakurs.su/IT/Kommytatory/Dell/N4000/powerconnect_nx00-usingmlag-whtppr_en-us.pdf

QUESTION 2

Which spanning tree feature will prevent unnecessary timeouts from DHCP servers?

- A. PortFast
- B. Loop Guard
- C. BPDU Flooding
- D. Root Guard

Correct Answer: A

Reference: <https://www.dell.com/community/Networking-General/Advice-on-basic-STP-and-network-design/td-p/4434346>

QUESTION 3

After setting up the VoIP configuration, a network administrator issues the following commands with the results shown:

```
console# show voice vlan Administrative Mode.....Enable
```

```
console# show voice vlan it gi 1/0/2
```

```
Interface.....Gi1/0/2
```

```
Voice VLAN Interface Mode.....Enabled
```

```
Voice VLAN ID.....10
```

```
Voice VLAN COS Overwrite.....False
```

```
Voice VLAN DSCP Value.....46
```

Voice VLAN Port Status.....Enabled

Voice VLAN Authentication.....Disabled

Based on this information, what is the Layer 3 QoS value?

- A. 5
- B. 10
- C. 46
- D. Gi1/0/2

Correct Answer: C

QUESTION 4

What describes the POE+ capabilities of the Dell EMC N1100P Series?

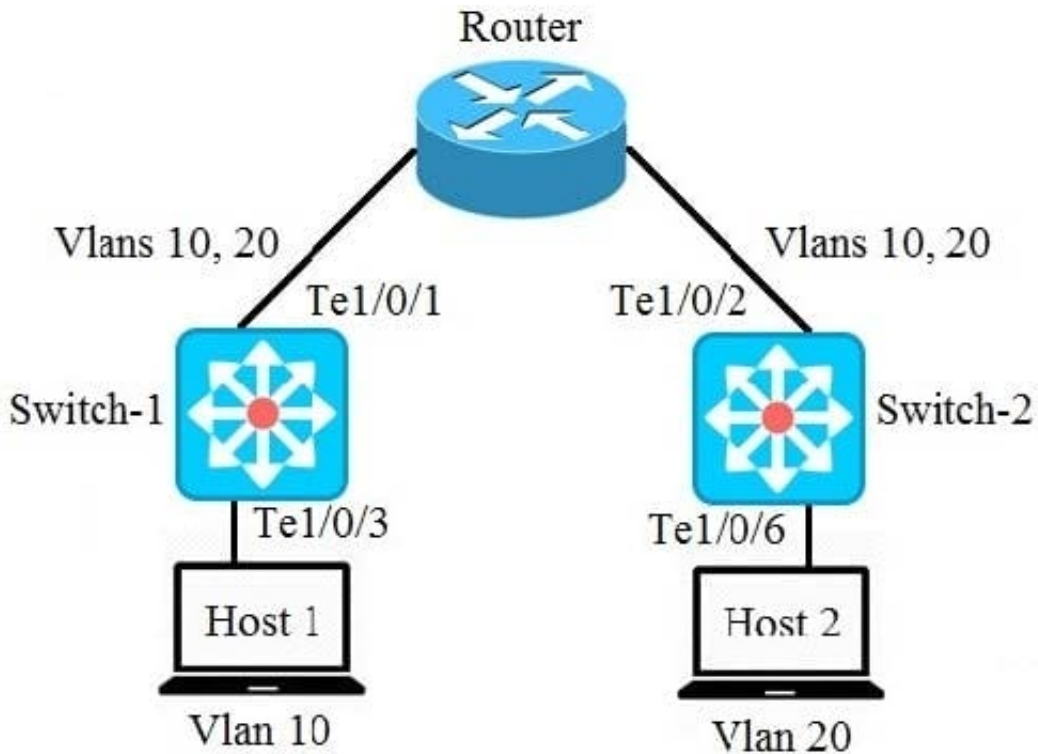
- A. Supported on any of the first half of switch ports or the first 12 switch ports, whichever is fewer. May only be enabled on a maximum of half of the supported ports.
- B. Supported on any of the first 12 switch ports or all switch ports, whichever is fewer. May only be enabled on a maximum of half of the supported ports.
- C. Supported on all of the first 12 switch ports or all switch ports, whichever is fewer.
- D. Supported on all of the first half of switch ports or the first 12 switch ports, whichever is fewer.

Correct Answer: B

QUESTION 5

```
Switch-1(config)# interface tengigabitethernet 1/0/1 Switch-1(config)# switchport mode access Switch-1(config)#  
switchport trunk allowed vlan 10, 20 Switch-1(config)# Switch-1(config)# interface tengigabitethernet 1/0/3  
Switch-1(config)# switchport mode access Switch-1(config)# switchport access vlan 10
```

```
Switch-2(config)# interface tengigabitethernet 1/0/2 Switch-2(config)# switchport mode trunk Switch-2(config)#  
switchport trunk allowed vlan 10, 20 Switch-2(config)# Switch-2(config)# interface tengigabitethernet 1/0/6  
Switch-2(config)# switchport mode access Switch-2(config)# switchport access vlan 20
```



A network administrator is troubleshooting why Host 1 cannot communicate with Host 2.

Based on the switch output shown in the exhibit, what is the reason for the communication issue?

- A. Port Te1/0/1 on Switch-1 is configured incorrectly
- B. Port Te1/0/2 on Switch-2 is configured incorrectly
- C. Port Te1/0/3 for Host 1 is configured incorrectly on Switch-1
- D. Port Te1/0/6 for Host 2 is configured incorrectly on Switch-2

Correct Answer: A

[Latest DES-5121 Dumps](#)

[DES-5121 PDF Dumps](#)

[DES-5121 VCE Dumps](#)