

## C2090-011<sup>Q&As</sup>

IBM SPSS Statistics Level 1 v2

**Pass IBM C2090-011 Exam with 100% Guarantee**

Free Download Real Questions & Answers **PDF** and **VCE** file from:

<https://www.leads4pass.com/c2090-011.html>

100% Passing Guarantee  
100% Money Back Assurance

Following Questions and Answers are all new published by IBM Official Exam Center

-  **Instant Download** After Purchase
-  **100% Money Back** Guarantee
-  **365 Days** Free Update
-  **800,000+** Satisfied Customers



**QUESTION 1**

In order to import data from databasesources such as Access and Oracle into IBM SPSS Statistics, you must first export the data from the database to a tad file and then import this tad file into IBM SPSS Statistics?

- A. True
- B. False

Correct Answer: B

---

**QUESTION 2**

As the sample size increases, the amount of variabilit9 in the distribution of sample means increases.

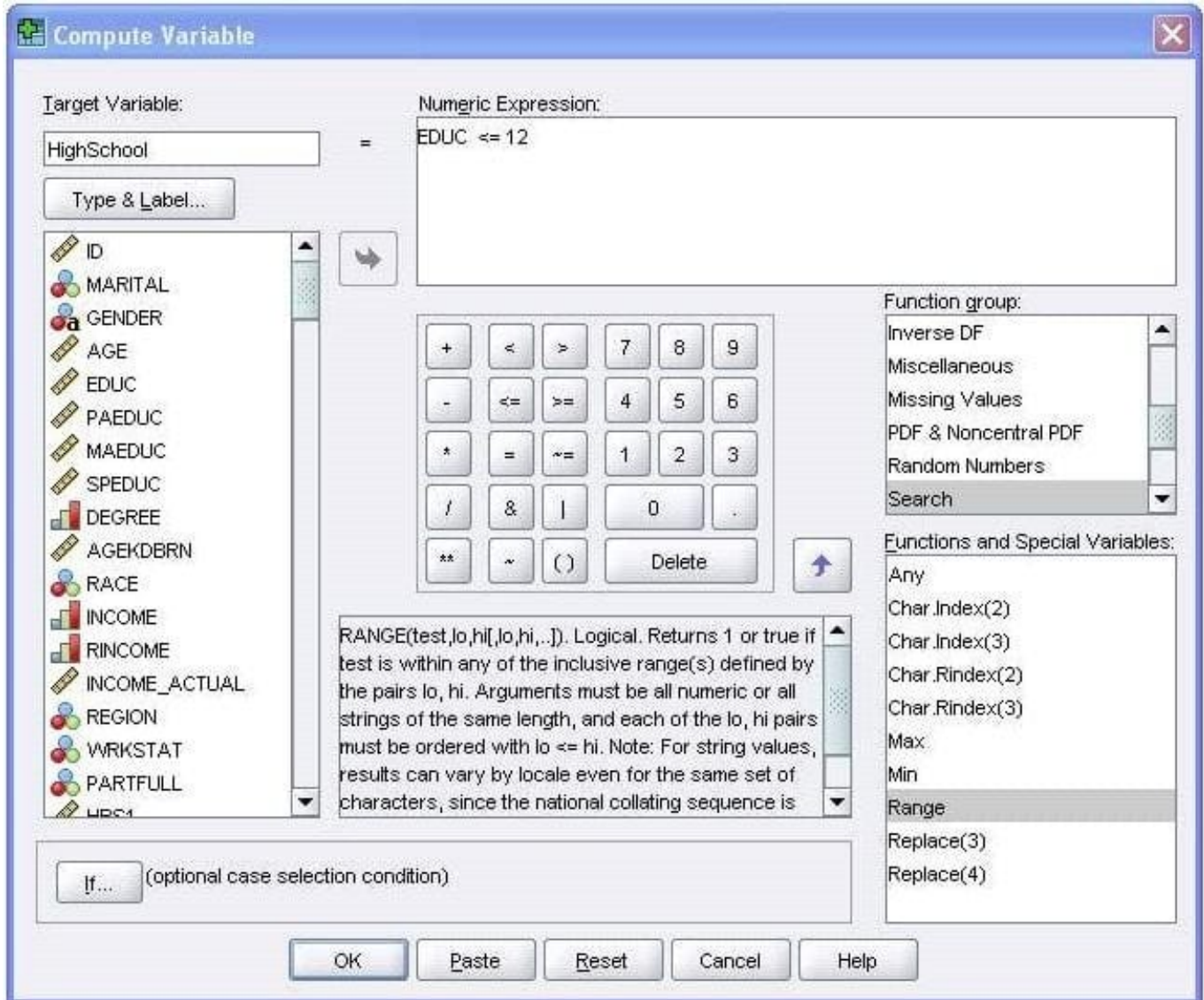
- A. True
- B. False

Correct Answer: B

---

**QUESTION 3**

Using the Compute Variable dialog below, the target variable HighSchool will have the following values. (Choose two.)



- A. Value 1 if EDUC is less than or equal to 12
- B. System-missing value if EDUC is greater than 12
- C. The same value as EDUC if EDUC is less than or equal to 12
- D. Value 0 if EDUC is greater than 12

Correct Answer: AB

**QUESTION 4**

If you use the IBM SPSS Statistics Select Cases dialog to conduct analysis on a subset of cases and you want to keep all cases in the same dataset, which option is appropriate?

- A. Copy unselected cases to a new dataset
- B. Copy selected cases to a new dataset

- C. Delete unselected cases
- D. Filter out unselected cases

Correct Answer: D

---

## QUESTION 5

Which options are available to edit bar charts? (Choose three.)

- A. Changing patterns displayed in bars
- B. Changing the major increment on the Y axis scale
- C. Displaying data value labels
- D. Changing the variable displayed on the X axis

Correct Answer: ABC

[C2090-011 Practice Test](#)

[C2090-011 Exam Questions](#)

[C2090-011 Braindumps](#)