



C2020-011^{Q&As}

IBM SPSS Statistics Level 1 v2

Pass IBM C2020-011 Exam with 100% Guarantee

Free Download Real Questions & Answers **PDF** and **VCE** file from:

<https://www.lead4pass.com/C2020-011.html>

100% Passing Guarantee
100% Money Back Assurance

Following Questions and Answers are all new published by IBM Official Exam Center

-  **Instant Download** After Purchase
-  **100% Money Back** Guarantee
-  **365 Days** Free Update
-  **800,000+** Satisfied Customers





QUESTION 1

For a variable salary we have the statistics as shown in the figure below.

Descriptive Statistics

	N	Minimum	Maximum	Mean
Current Salary	474	-9999.00	135000.00	33915.7321
Valid N (listwise)	474			

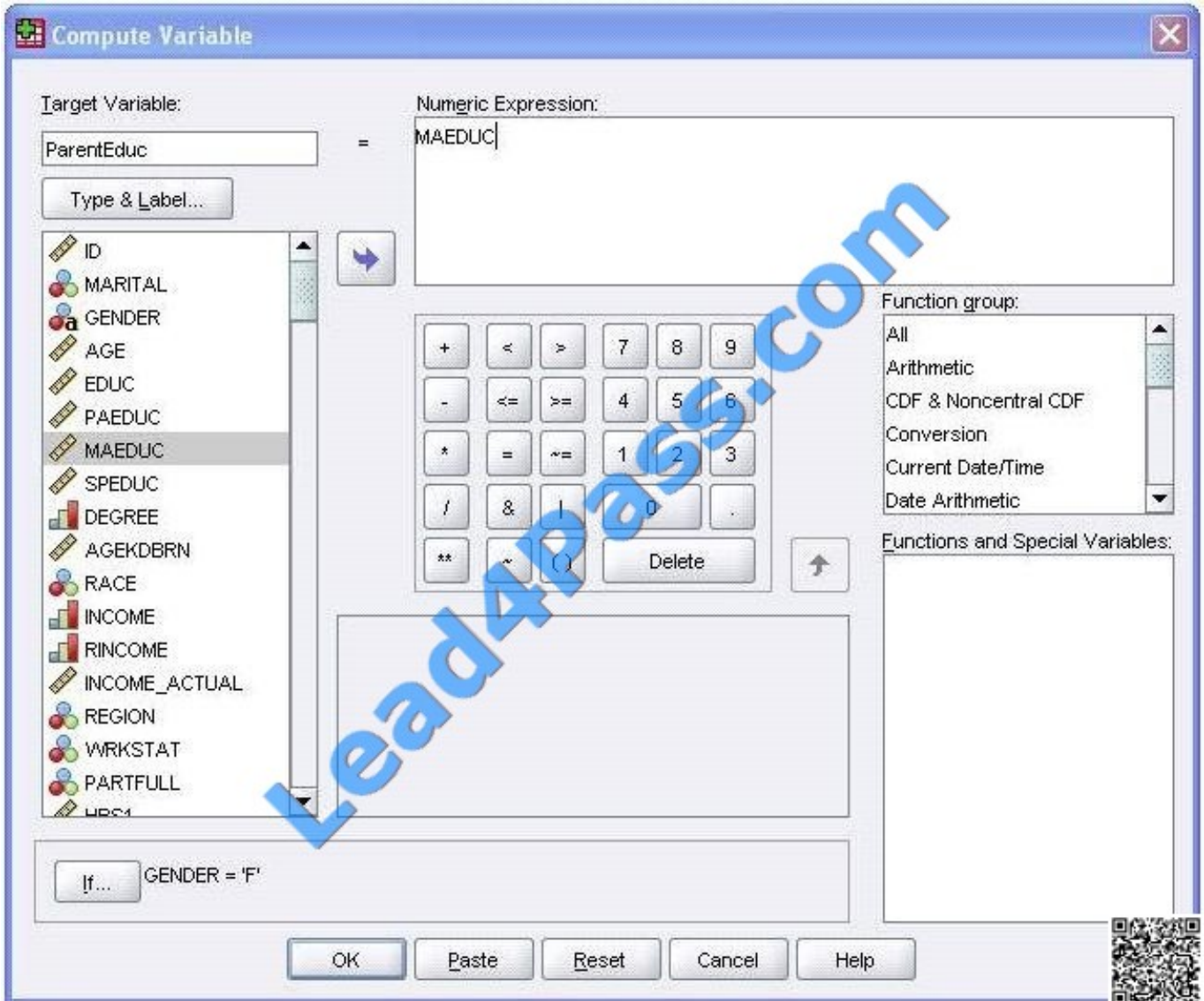
The reported Mean is incorrect because a value, -9999, is included in its calculation. How can this situation be fixed?

- A. Define -9999 as a system-missing value.
- B. Remove allcases with the value -9999 for the variable salary from the data file.
- C. Define -9999 as a user-missing value.
- D. Define -9999 as both a system- and user-missing value.

Correct Answer: C

QUESTION 2

The Compute Variable dialog shown below performs which of the following operations? (Choose two.)



- A. Sets the value of ParentEduc equal to the value of MAEDUC.
- B. Sets the value of ParentEduc equal to the value of MAEDUC if the value of GENDER is
- C.
- D. Sets the value of ParentEduc equal to the system-missing value if the value of GENDER is blank.
- E. Sets the value of ParentEduc equal to the user-missing value if the value of GENDER is blank.

Correct Answer: BC

QUESTION 3

In order to access the New Custom Attribute feature in the Data Editor, the Data Editor must be viewed from the:

- A. Value Labels button.

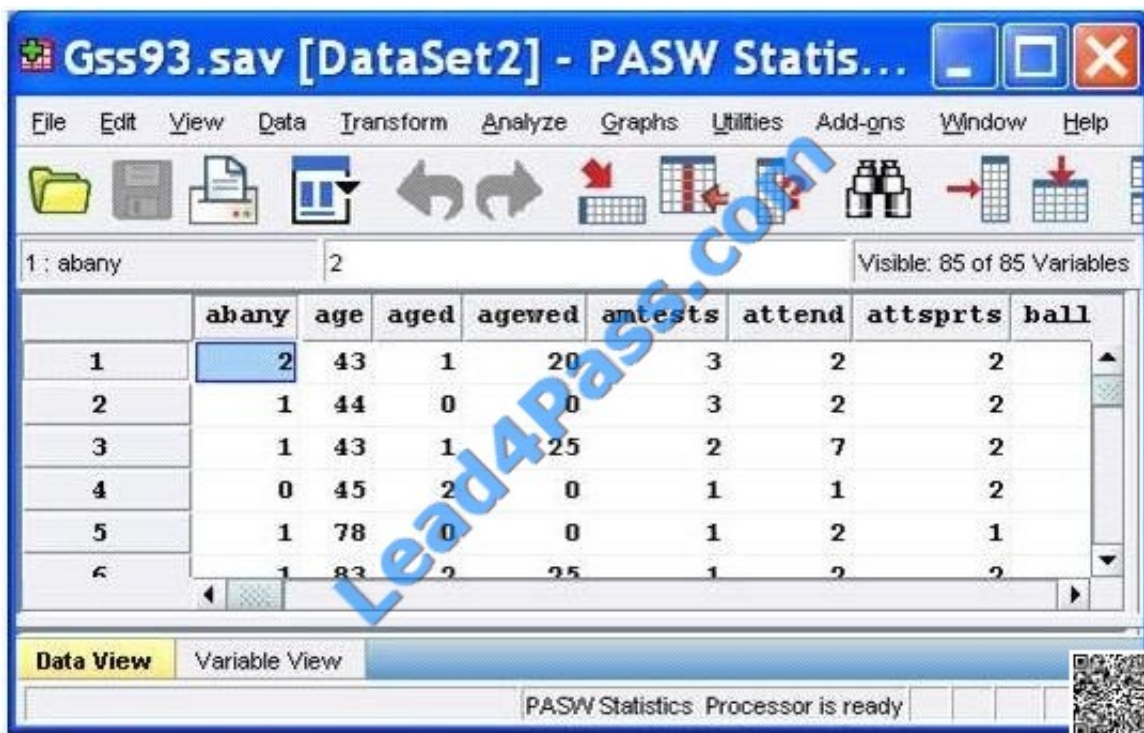


- B. Dialog Recall button.
- C. Variable View tab.
- D. Data View tab.

Correct Answer: C

QUESTION 4

After studying the figure below1 select the correct statement.

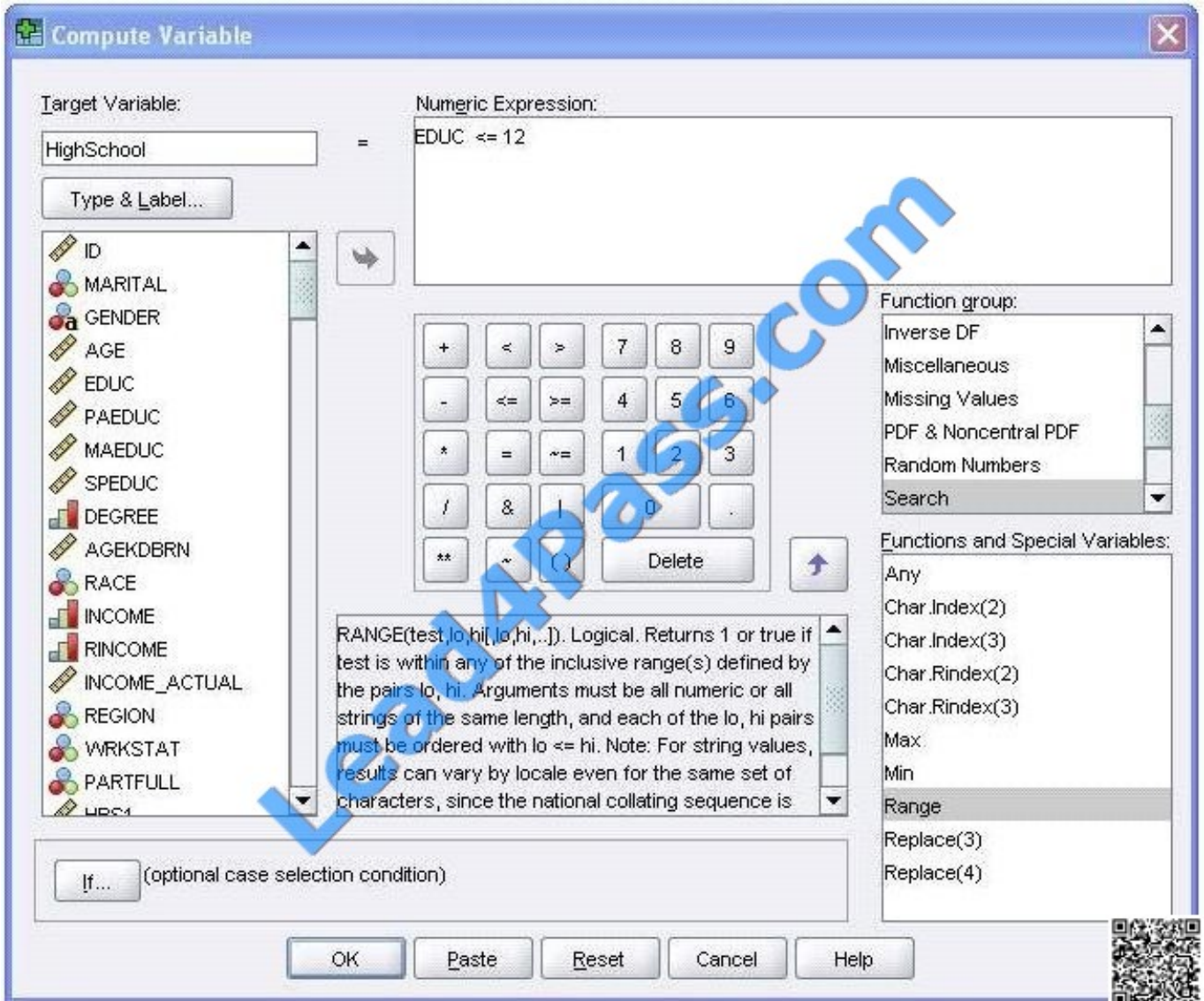


- A. Gss93.sav is the dataset name.
- B. DataSet2 is the dataset name.
- C. DataSet2 is the file name.
- D. DataSet2 is both the file and dataset name.

Correct Answer: B

QUESTION 5

Using the Compute Variable dialog below, the target variable HighSchool will have the following values. (Choose two.)



- A. Value 1 if EDUC is less than or equal to 12
- B. System-missing value if EDUC is greater than 12
- C. The same value as EDUC if EDUC is less than or equal to 12
- D. Value 0 if EDUC is greater than 12

Correct Answer: AB

[Latest C2020-011 Dumps](#)

[C2020-011 PDF Dumps](#)

[C2020-011 VCE Dumps](#)



To Read the [Whole Q&As](#), please purchase the [Complete Version](#) from [Our website](#).

Try our product !

100% Guaranteed Success

100% Money Back Guarantee

365 Days Free Update

Instant Download After Purchase

24x7 Customer Support

Average 99.9% Success Rate

More than 800,000 Satisfied Customers Worldwide

Multi-Platform capabilities - [Windows](#), [Mac](#), [Android](#), [iPhone](#), [iPod](#), [iPad](#), [Kindle](#)

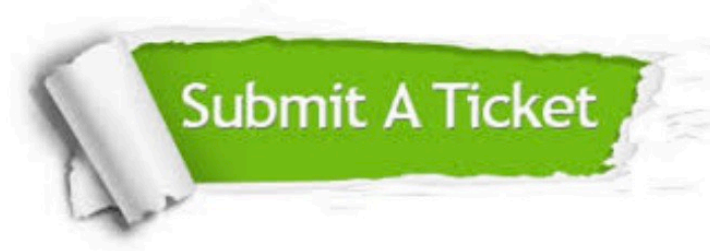
We provide exam PDF and VCE of Cisco, Microsoft, IBM, CompTIA, Oracle and other IT Certifications. You can view Vendor list of All Certification Exams offered:

<https://www.lead4pass.com/allproducts>

Need Help

Please provide as much detail as possible so we can best assist you.

To update a previously submitted ticket:



 <p>One Year Free Update Free update is available within One Year after your purchase. After One Year, you will get 50% discounts for updating. And we are proud to boast a 24/7 efficient Customer Support system via Email.</p>	 <p>Money Back Guarantee To ensure that you are spending on quality products, we provide 100% money back guarantee for 30 days from the date of purchase.</p>	 <p>Security & Privacy We respect customer privacy. We use McAfee's security service to provide you with utmost security for your personal information & peace of mind.</p>
---	---	--

Any charges made through this site will appear as Global Simulators Limited.

All trademarks are the property of their respective owners.

Copyright © lead4pass, All Rights Reserved.