

## AZ-800<sup>Q&As</sup>

Administering Windows Server Hybrid Core Infrastructure

### Pass Microsoft AZ-800 Exam with 100% Guarantee

Free Download Real Questions & Answers **PDF** and **VCE** file from:

<https://www.leads4pass.com/az-800.html>

100% Passing Guarantee  
100% Money Back Assurance

Following Questions and Answers are all new published by Microsoft  
Official Exam Center

-  **Instant Download** After Purchase
-  **100% Money Back** Guarantee
-  **365 Days** Free Update
-  **800,000+** Satisfied Customers



## QUESTION 1

### SIMULATION

You plan to delegate the management of a DNS zone named fabrikam.com located on DC1 to the BranchAdmins group.

You need to ensure that you can grant permissions to the fabrikam.com zone.

To complete this task, sign in the required computer or computers.

- A. See explanation below.
- B. Placeholder
- C. Placeholder
- D. Placeholder

Correct Answer: A

You can create these DNS delegation records before you install DNS server.

Step 1: To create a zone delegation, open DNS Manager.

Step 2: Right-click the parent domain. In our case: fabrikam.com

Step 3: Click New Delegation.

The New Delegation Wizard starts.

Step 4: In the New Delegation Wizard, on the Welcome page, click Next.

Step 5: On the Delegated Domain Name page, as shown below, in the Delegated domain box, type the subdomain name. In this case fabrikam.com.

New Delegation Wizard

**Delegated Domain Name**  
Authority for the DNS domain you supply will be delegated to a different zone.

Specify the name of the DNS domain you want to delegate.

Delegated domain:

Fully qualified domain name (FQDN):

< Back   Next >   Cancel

Step 6: On the Name Servers page, click Add.

Step 7: In the New Name Server Record dialog box, on the Server Fully Qualified Domain name (FQDN) box, type the name of the DNS server that hosts the new delegated zone, click Resolve, and then click OK.

Step 8: On the Name Servers page, click Next, and then click Finish.

Reference: <https://www.microsoftpressstore.com/articles/article.aspx?p=2756482andseqNum=2>

## QUESTION 2

You have an Azure subscription that contains the following resources.

1.

An Azure Log Analytics workspace

2.

An Azure Automation account

3.

## Azure Arc

You have an on-premises server named Server1 that is onboarded to Azure Arc.

You need to manage Microsoft updates on Server1 by using Azure Arc.

Which two actions should you perform? Each correct answer presents part of the solution.

NOTE: Each correct selection is worth one point.

- A. Add Microsoft Sentinel to the Log Analytics workspace.
- B. On Server1, install the Azure Monitor agent.
- C. From the Automation account, enable Update Management for Server1.
- D. From the Virtual machines data source of the Log Analytics workspace, connect Server1.

Correct Answer: BC

Reference: <https://docs.microsoft.com/en-us/azure/cloud-adoption-framework/manage/hybrid/server/best-practices/arc-update-management>

---

## QUESTION 3

### SIMULATION

You need to configure a Group Policy preference to ensure that users in the organizational unit (OU) named Server Admins have a shortcut to a folder named \\srv1.contoso.com\data on their desktop when they sign in to the computers in the domain.

To complete this task, sign in the required computer or computers.

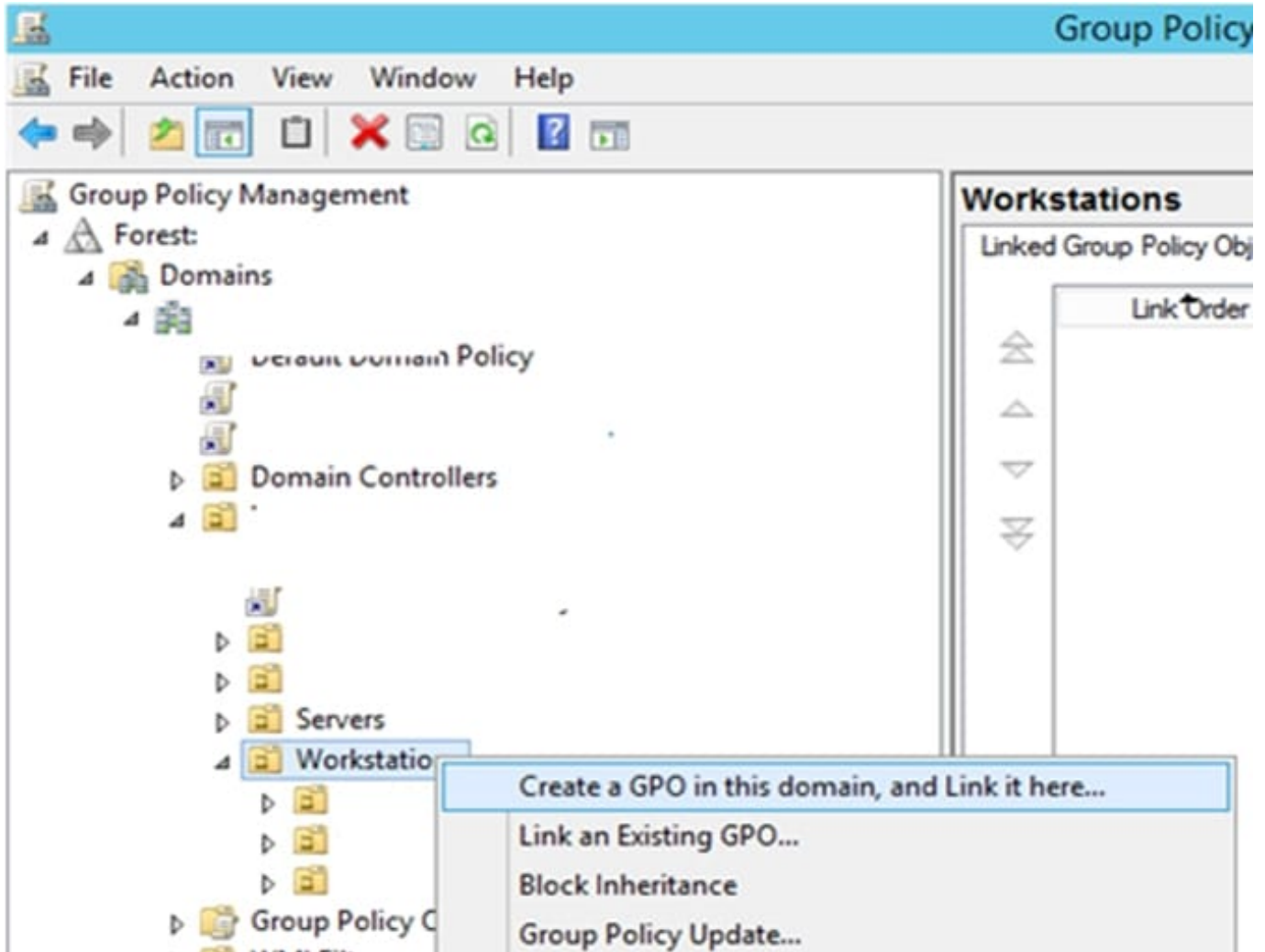
- A. See explanation below.
- B. Placeholder
- C. Placeholder
- D. Placeholder

Correct Answer: A

Create Desktop Shortcuts on Domain Computers via GPO.

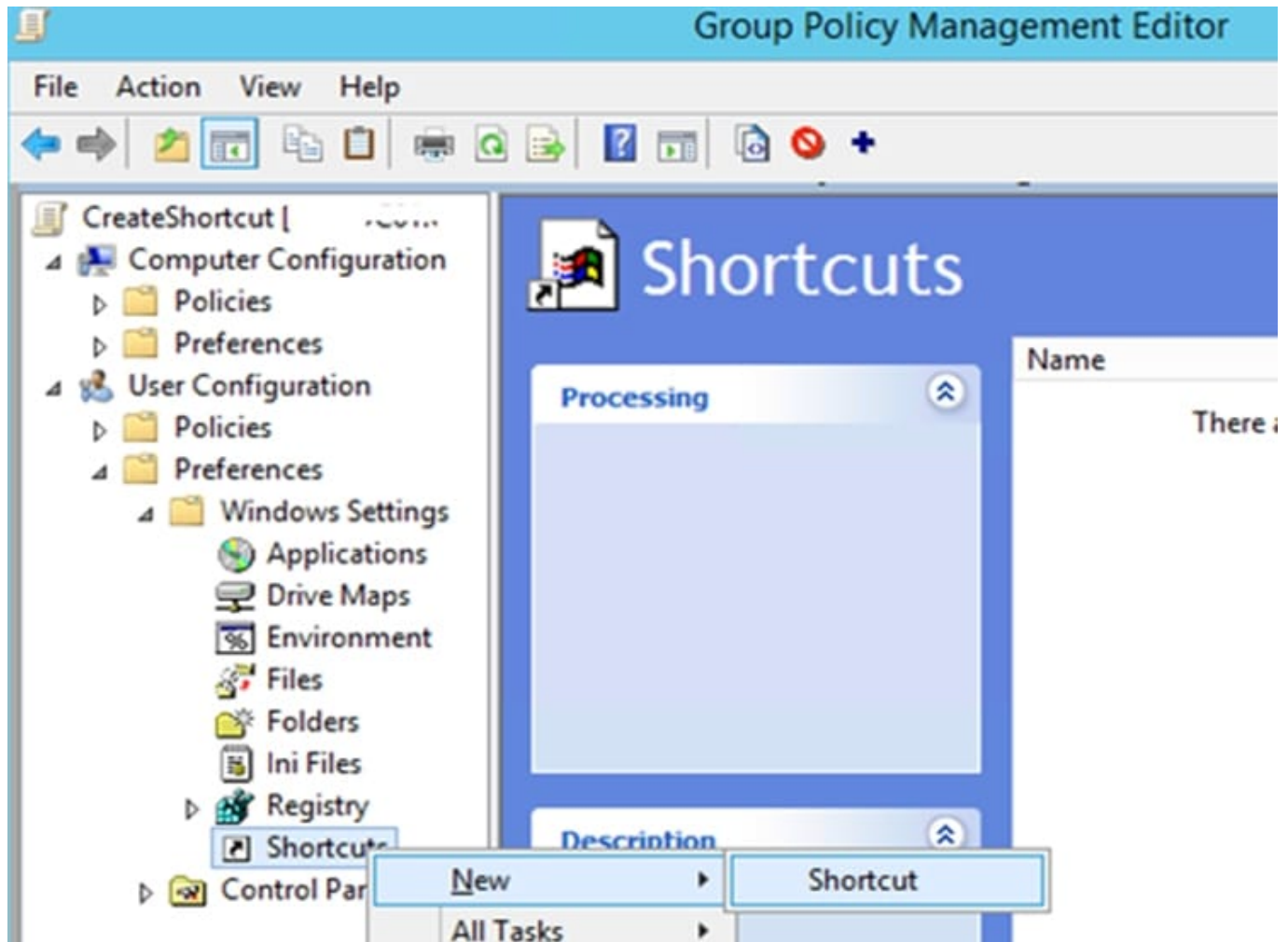
Step 1: Open the Group Policy Management Console (gpmc.msc).

Step 2: Right-click an AD container (Organizational Unit) you want to apply a shortcut creation policy. In this case right-click on the OU Server Admins.



Step 3: Select Create a GPO in this domain, and Link it here..

Step 4: Go to the Group Policy Preferences section: User Configuration –andgt; Preferences -> Windows Settings -> Shortcuts. Click it and select New -> Shortcut;



Step 5: Create a new shortcut item with the following settings: Name: Something Target Type: File System Object (you can select a URL or a Shell object here) Location: Desktop Target Path: \\srv1.contoso.com\data

Reference: <http://woshub.com/create-desktop-shortcuts-group-policy/>

#### QUESTION 4

After you answer a question in this section, you will NOT be able to return to it. As a result, these questions will not appear in the review screen.

Your network contains an Active Directory Domain Services (AD DS) forest. The forest contains three Active Directory sites named Site1, Site2, and Site3. Each site contains two domain controllers. The sites are connected by using

DEFAULTIPSITELINK.

You open a new branch office that contains only client computers.

You need to ensure that the client computers in the new office are primarily authenticated by the domain controllers in Site1.

Solution: You create an organization unit (OU) that contains the client computers in the branch office. You configure the Try Next Closest Site Group Policy Object (GPO) setting in a GPO that is linked to the new OU.

Does this meet the goal?

A. Yes

B. No

Correct Answer: B

---

## QUESTION 5

You have a server named Server1 that runs Windows Server.

You plan to host applications in Windows containers.

You need to configure Server1 to run containers.

What should you install?

A. Windows Admin Center

B. Docker

C. the Windows Subsystem for Linux

D. Hyper-V

Correct Answer: B

[AZ-800 Practice Test](#)

[AZ-800 Study Guide](#)

[AZ-800 Braindumps](#)