



# AZ-300<sup>Q&As</sup>

Microsoft Azure Architect Technologies

## Pass Microsoft AZ-300 Exam with 100% Guarantee

Free Download Real Questions & Answers **PDF** and **VCE** file from:

<https://www.lead4pass.com/az-300.html>

100% Passing Guarantee  
100% Money Back Assurance

Following Questions and Answers are all new published by Microsoft  
Official Exam Center

-  **Instant Download** After Purchase
-  **100% Money Back** Guarantee
-  **365 Days** Free Update
-  **800,000+** Satisfied Customers





### QUESTION 1

You need to configure the Azure ExpressRoute circuits.

How should you configure Azure ExpressRoute routing? To answer, drag the appropriate configurations to the correct locations. Each Configuration may be used once, more than once, or not at all. You may need to drag the split bar between panes or scroll to view content NOTE: Each correct selection is worth one point.

Select and Place:

Configurations	Answer Area
Use BGP communities to configure BGP's Local Preference.	Routing from A.Datum to Azure:
Use BGP to append the private AS numbers to the advertised prefixes.	Routing from Microsoft Online Services to A.Datum:
Use BGP to append the public AS numbers to the advertised prefixes.	

Correct Answer:

Configurations	Answer Area
Use BGP communities to configure BGP's Local Preference.	Routing from A.Datum to Azure:
	Routing from Microsoft Online Services to A.Datum:
	Use BGP to append the private AS numbers to the advertised prefixes.
	Use BGP to append the public AS numbers to the advertised prefixes.

Azure compute services, namely virtual machines (IaaS) and cloud services (PaaS), that are deployed within a virtual network can be connected through the private peering domain. The private peering domain is considered to be a trusted extension of your core network into Microsoft Azure.

Services such as Azure Storage, SQL databases, and Websites are offered on public IP addresses. You can privately connect to services hosted on public IP addresses, including VIPs of your cloud services, through the public peering routing domain. You can connect the public peering domain to your DMZ and connect to all Azure services on their public IP addresses from your WAN without having to connect through the internet.

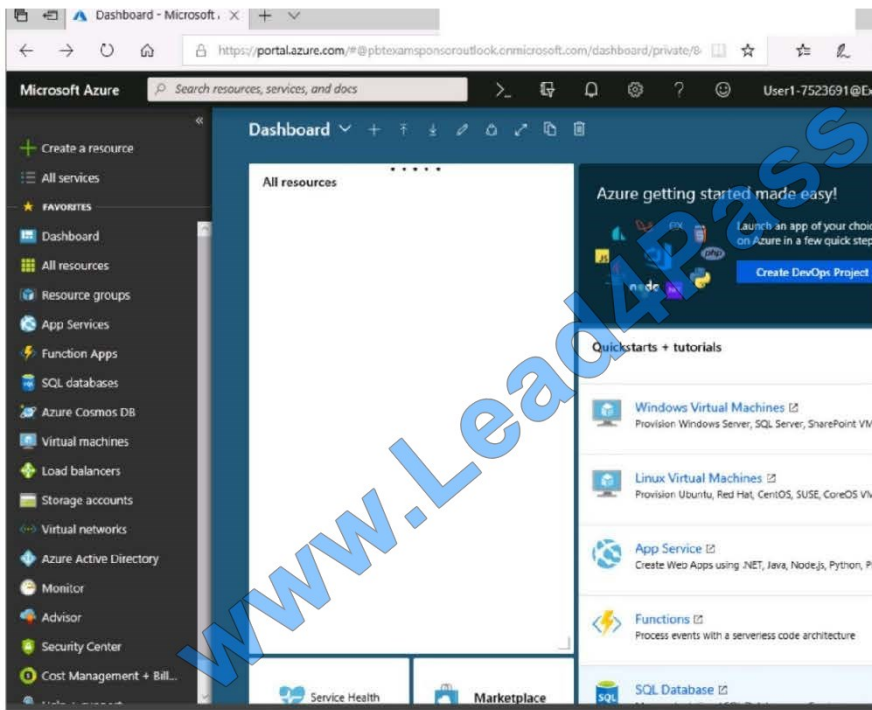
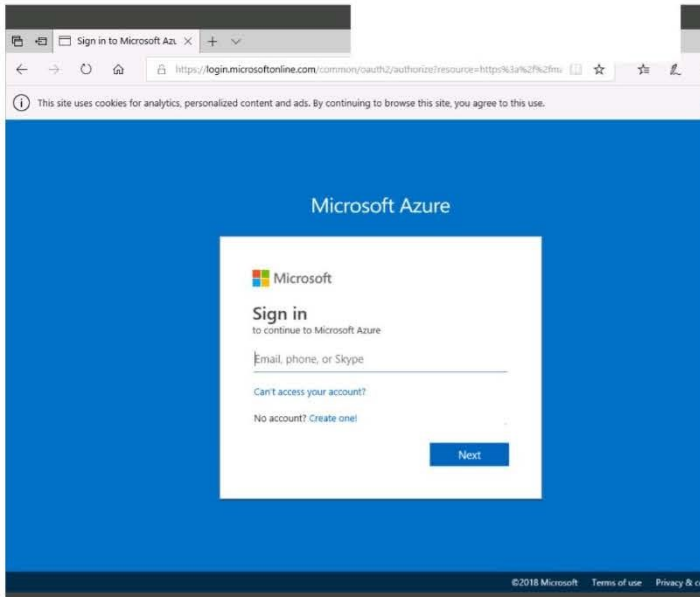
References: <https://docs.microsoft.com/en-us/azure/expressroute/expressroute-circuit-peering>

### QUESTION 2



## SIMULATION

Click to expand each objective. To connect to the Azure portal, type <https://portal.azure.com> in the browser address bar.





Home > Storage accounts > Create storage account

### Create storage account

✓ Validation passed

Basics Advanced Tags Review + create

**BASICS**

Subscription	Microsoft AZ-100 5
Resource group	corpdataod7523690
Location	East US
Storage account name	corpdata7523690n1
Deployment model	Resource manager
Account kind	StorageV2 (general purpose v2)
Replication	Read-access geo-redundant storage (RA-GRS)
Performance	Standard
Access tier (default)	Hot

**ADVANCED**

Secure transfer required	Enabled
Hierarchical namespace	Disabled

Create Previous Next Download a template for automation

Home > Storage accounts > Create storage account

### Create storage account

Basics Advanced Tags Review + create

**BASICS**

Subscription	Microsoft AZ-100 5
Resource group	corpdataod7523690
Location	East US
Storage account name	corpdata7523690n1
Deployment model	Resource manager
Account kind	StorageV2 (general purpose v2)
Replication	Read-access geo-redundant storage (RA-GRS)
Performance	Standard
Access tier (default)	Hot

**ADVANCED**

Secure transfer required	Enabled
Hierarchical namespace	Disabled

\*\*\* Submitting deployment...  
Submitting the deployment template for resource 'corpdataod7523690'.

Home > Microsoft.StorageAccount-20181011170335 - Overview

### Microsoft.StorageAccount-20181011170335 - Overview

Deployment

Search (Ctrl+/) Delete Cancel Redeploy Refresh

**Overview**

- Outputs
- Inputs
- Template

**Your deployment is underway**

Check the status of your deployment, manage resources, or troubleshoot deployment issues. Pin this page to your dashboard to easily find it next time.

**Deployment**  
name: Microsoft.StorageAccount-20181011170335  
Subscription: Microsoft AZ-100 5  
Resource group: corpdataod7523690

**DEPLOYMENT DETAILS** (Download)  
Start time: 10/11/2018 5:04:06 PM  
Duration: 17 seconds  
Correlation ID: bd0806a4-d1bd-42db-be6b-55e0ec38f49b

RESOURCE	TYPE	STATUS	OPERATI...
No results.			



Home > Virtual machines > Create a virtual machine

## Create a virtual machine

**!** Validation failed. Required information is missing or not valid.

Basics • Disks Networking Management Guest config Tags **Review + create**

### PRODUCT DETAILS

Ubuntu Server 18.04 LTS

by Canonical

[Terms of use](#) | [Privacy policy](#)

**Pricing not available for this offering**

View [Pricing details](#) for more information.

Standard D2s v3

by Microsoft

[Terms of use](#) | [Privacy policy](#)

Subscription credits apply ⓘ

**0.0960 USD/hr**

[Pricing for other VM sizes](#)

### TERMS

By clicking "Create", I (a) agree to the legal terms and privacy statement(s) associated with the Marketplace offering(s) listed above; (b) authorize Microsoft to bill my current payment method for the fees associated with the offering(s), with the same billing frequency as my Azure subscription; and (c) agree that Microsoft may share my contact, usage and transactional information with the provider(s) of the offering(s) for support, billing and other transactional activities. Microsoft does not provide rights for third-party offerings. See the [Azure Marketplace Terms](#) for additional details.

When you are finished performing all the tasks, click the `Next` button.

Note that you cannot return to the lab once you click the `Next` button. Scoring occurs in the background while you complete the rest of the exam.

### Overview

The following section of the exam is a lab. In this section, you will perform a set of tasks in a live environment. While most functionality will be available to you as it would be in a live environment, some functionality (e.g., copy and paste, ability to navigate to external websites) will not be possible by design.

Scoring is based on the outcome of performing the tasks stated in the lab. In other words, it doesn't matter how you accomplish the task, if you successfully perform it, you will earn credit for that task.

Labs are not timed separately, and this exam may have more than one lab that you must complete. You can use as much time as you would like to complete each lab. But, you should manage your time appropriately to ensure that you are

able to complete the lab(s) and all other sections of the exam in the time provided.

Please note that once you submit your work by clicking the Next button within a lab, you will NOT be able to return to the lab.



To start the lab

You may start the lab by clicking the Next button.

Your company plans to host in Azure the source files of several line-of-business applications.

You need to create an Azure file share named corpsoftware in the storagelod8322489 storage account. The solution must ensure that corpsoftware can store only up to 250 GB of data.

What should you do from the Azure portal?

Correct Answer:

---

### QUESTION 3

You are responsible for mobile app development for a company. The company develops apps on Windows Mobile, IOS, and Android.

You plan to integrate push notifications into every app.

You need to be able to send users alerts from a backend server.

Which two options can you use to achieve this goal? Each correct answer presents a complete solution.

NOTE: Each correct selection is worth one point.

- A. Azure Web App
- B. Azure Mobile App Service
- C. Azure SQL Database
- D. Azure Notification Hubs
- E. a virtual machine

Correct Answer: BD

The Mobile Apps client enables you to register for push notifications with Azure Notification Hubs.

The following platforms are supported:

Xamarin Android releases for API 19 through 24 (KitKat through Nougat)

Xamarin iOS releases for iOS versions 8.0 and later

Universal Windows Platform

Windows Phone 8.1

Windows Phone 8.0 except for Silverlight applications

References: <https://docs.microsoft.com/en-us/azure/app-service-mobile/app-service-mobile-dotnet-how-to-use-client-library>

---



**QUESTION 4**

**DRAG DROP**

You develop a web app that uses the tier D1 app service plan by using the Web Apps feature of Microsoft Azure App Service.

Spikes in traffic have caused increases in page load times.

You need to ensure that the web app automatically scales when CPU load is about 85 percent and minimize costs.

Which four actions should you perform in sequence? To answer, move the appropriate actions from the list of actions to the answer area and arrange them in the correct order.

NOTE: More than one order of answer choices is correct. You will receive credit for any of the correct orders you select.

Select and Place:

**Actions**

**Answer Area**

- Configure the web app to the Premium App Service tier.
- Configure a Scale condition.
- Configure the web app to the Standard App Service tier.
- Enable autoscaling on the web app.
- Add a Scale rule.
- Switch to an Azure App Services consumption plan.



Correct Answer:

**Actions**

**Answer Area**

- Configure the web app to the Premium App Service tier.
- 
- 
- 
- 
- Switch to an Azure App Services consumption plan.



- Configure the web app to the Standard App Service tier.
- Enable autoscaling on the web app.
- Add a Scale rule.
- Configure a Scale condition.



References: <https://docs.microsoft.com/en-us/azure/azure-monitor/platform/autoscale-get-started>

**QUESTION 5**





You have an Azure subscription named Subscription1. Subscription1 contains the resource groups in the following table. RG1 has a web app named WebApp1. WebApp1 is located in West Europe.

Name	Azure region	Policy
RG1	West Europe	Policy1
RG2	North Europe	Policy2
RG3	France Central	Policy3

You move WebApp1 to RG2.

What is the effect of the move?

- A. The App Service plan for WebApp1 moves to North Europe. Policy1 applies to WebApp1.
- B. The App Service plan for WebApp1 remains in West Europe. Policy1 applies to WebApp1.
- C. The App Service plan for WebApp1 moves to North Europe. Policy2 applies to WebApp1.
- D. The App Service plan for WebApp1 remains in West Europe. Policy2 applies to WebApp1.

Correct Answer: D

You can move an app to another App Service plan, as long as the source plan and the target plan are in the same resource group and geographical region. The region in which your app runs is the region of the App Service plan it's in. However, you cannot change an App Service plan's region.

References: <https://docs.microsoft.com/en-us/azure/app-service/app-service-plan-manage>



To Read the [Whole Q&As](#), please purchase the [Complete Version](#) from [Our website](#).

## Try our product !

100% Guaranteed Success

100% Money Back Guarantee

365 Days Free Update

Instant Download After Purchase

24x7 Customer Support

Average 99.9% Success Rate

More than 800,000 Satisfied Customers Worldwide

Multi-Platform capabilities - [Windows](#), [Mac](#), [Android](#), [iPhone](#), [iPod](#), [iPad](#), [Kindle](#)

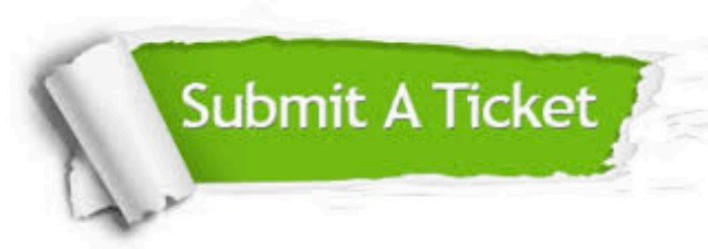
We provide exam PDF and VCE of Cisco, Microsoft, IBM, CompTIA, Oracle and other IT Certifications. You can view Vendor list of All Certification Exams offered:

<https://www.lead4pass.com/allproducts>

## Need Help

Please provide as much detail as possible so we can best assist you.

To update a previously submitted ticket:



 <p><b>One Year Free Update</b> Free update is available within One Year after your purchase. After One Year, you will get 50% discounts for updating. And we are proud to boast a 24/7 efficient Customer Support system via Email.</p>	 <p><b>Money Back Guarantee</b> To ensure that you are spending on quality products, we provide 100% money back guarantee for 30 days from the date of purchase.</p>	 <p><b>Security &amp; Privacy</b> We respect customer privacy. We use McAfee's security service to provide you with utmost security for your personal information &amp; peace of mind.</p>
---	---	--

Any charges made through this site will appear as Global Simulators Limited.

All trademarks are the property of their respective owners.

Copyright © lead4pass, All Rights Reserved.