



AZ-103^{Q&As}

Microsoft Azure Administrator

Pass Microsoft AZ-103 Exam with 100% Guarantee

Free Download Real Questions & Answers **PDF** and **VCE** file from:

<https://www.lead4pass.com/az-103.html>

100% Passing Guarantee
100% Money Back Assurance

Following Questions and Answers are all new published by Microsoft
Official Exam Center

-  **Instant Download** After Purchase
-  **100% Money Back** Guarantee
-  **365 Days** Free Update
-  **800,000+** Satisfied Customers





QUESTION 1

Note: This question is part of a series of questions that present the same scenario. Each question in the series contains a unique solution that might meet the stated goals. Some question sets might have more than one correct solution, while

others might not have a correct solution.

After you answer a question in this section, you will NOT be able to return to it. As a result, these questions will not appear in the review screen.

You have an Azure Active Directory (Azure AD) tenant named Adatum and an Azure Subscription named Subscription1. Adatum contains a group named Developers. Subscription1 contains a resource group named Dev.

You need to provide the Developers group with the ability to create Azure logic apps in the Dev resource group.

Solution: On Subscription1, you assign the Logic App Operator role to the Developers group.

Does this meet the goal?

- A. Yes
- B. No

Correct Answer: B

The Logic App Operator role only lets you read, enable and disable logic app. With it you can view the logic app and run history, and enable/disable. Cannot edit or update the definition. You would need the Logic App Contributor role.

References: <https://docs.microsoft.com/en-us/azure/role-based-access-control/built-in-roles>
<https://docs.microsoft.com/en-us/azure/logic-apps/logic-apps-securing-a-logic-app>

QUESTION 2

After you answer a question in this section, you will NOT be able to return to it. As a result, these questions will not appear in the review screen.

You have an Azure subscription that contains the resources shown in the following table.

Name	Type	Region
RG1	Resource group	West US
RG2	Resource group	East Asia
storage1	Storage account	West US
storage2	Storage account	East Asia
VM1	Virtual machine	West US
VNET1	Virtual machine	West US
VNET2	Virtual machine	East Asia



VM1 connects to VNET1.

You need to connect VM1 to VNET2.

Solution: You delete VM1. You recreate VM1, and then you add the network interface for VM1.

Does this meet the goal?

A. Yes

B. No

Correct Answer: A

Instead you should delete VM1. You recreate VM1, and then you add the network interface for VM1.

Note: When you create an Azure virtual machine (VM), you must create a virtual network (VNet) or use an existing VNet. You can change the subnet a VM is connected to after it's created, but you cannot change the VNet.

References:

<https://docs.microsoft.com/en-us/azure/virtual-machines/windows/network-overview>

QUESTION 3

SIMULATION

Please wait while the virtual machine loads. Once loaded, you may proceed to the lab section. This may take a few minutes, and the wait time will not be deducted from your overall test time.

When the Next button is available, click it to access the lab section. In this section, you will perform a set of tasks in a live environment. While most functionality will be available to you as it would be in a live environment, some functionality

(e.g, copy and paste, ability to navigate to external websites) will not be possible by design.

Scoring is based on the outcome of performing the tasks stated in the lab. In other words, it doesn't matter how you accomplish the task, if you successfully perform it, you will earn credit for that task.

Labs are not timed separately, and this exam may have more than one lab that you must complete. You can use as much time as you would like to complete each lab. But, you should manage your time appropriately to ensure that you are

able to complete the lab(s) and all other sections of the exam in the time provided.

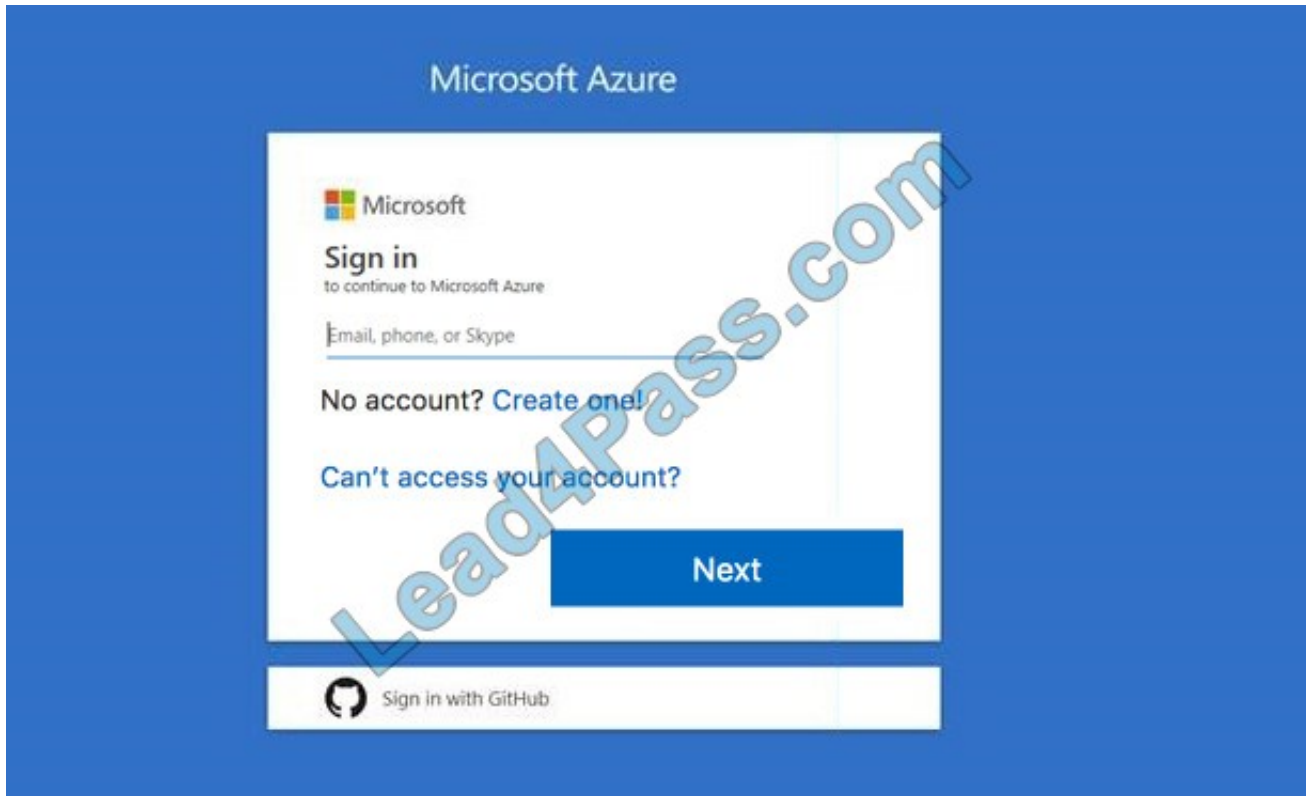
Please note that once you submit your work by clicking the Next button within a lab, you will NOT be able to return to the lab.

You may now click next to proceed to the lab.

Use the following login credentials as needed:

Azure Username: XXXXXXXX

Azure Password: XXXXXXXX The following information is for technical support purposes only: Lab Instance: 9172796



Task 1

You plan to prevent users from accidentally deleting blob data from Azure.

You need to ensure that administrators can recover any blob data that is deleted accidentally from the storagelod9272261 storage account for 14 days after the deletion occurred.

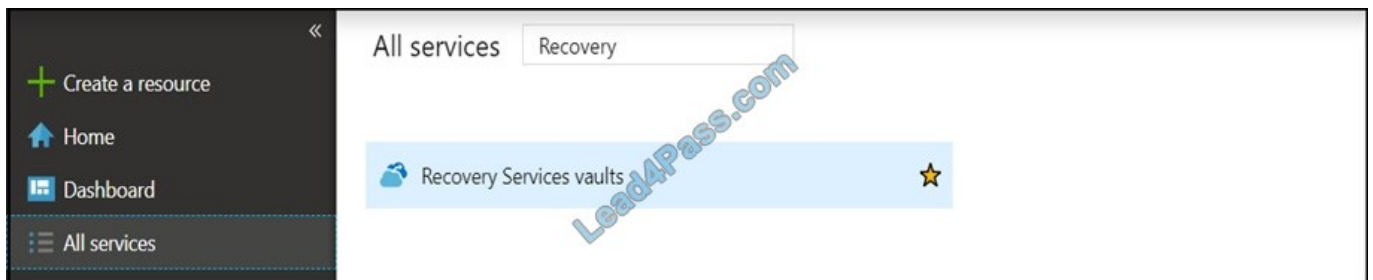
What should you do from the Azure portal?

A. Answer: See below.

Correct Answer: A

Task A: Create a Recovery Services vault (if a vault already exists skip this task, go to Task B below)

A1. From Azure Portal, On the Hub menu, click All services and in the list of resources, type Recovery Services and click Recovery Services vaults.



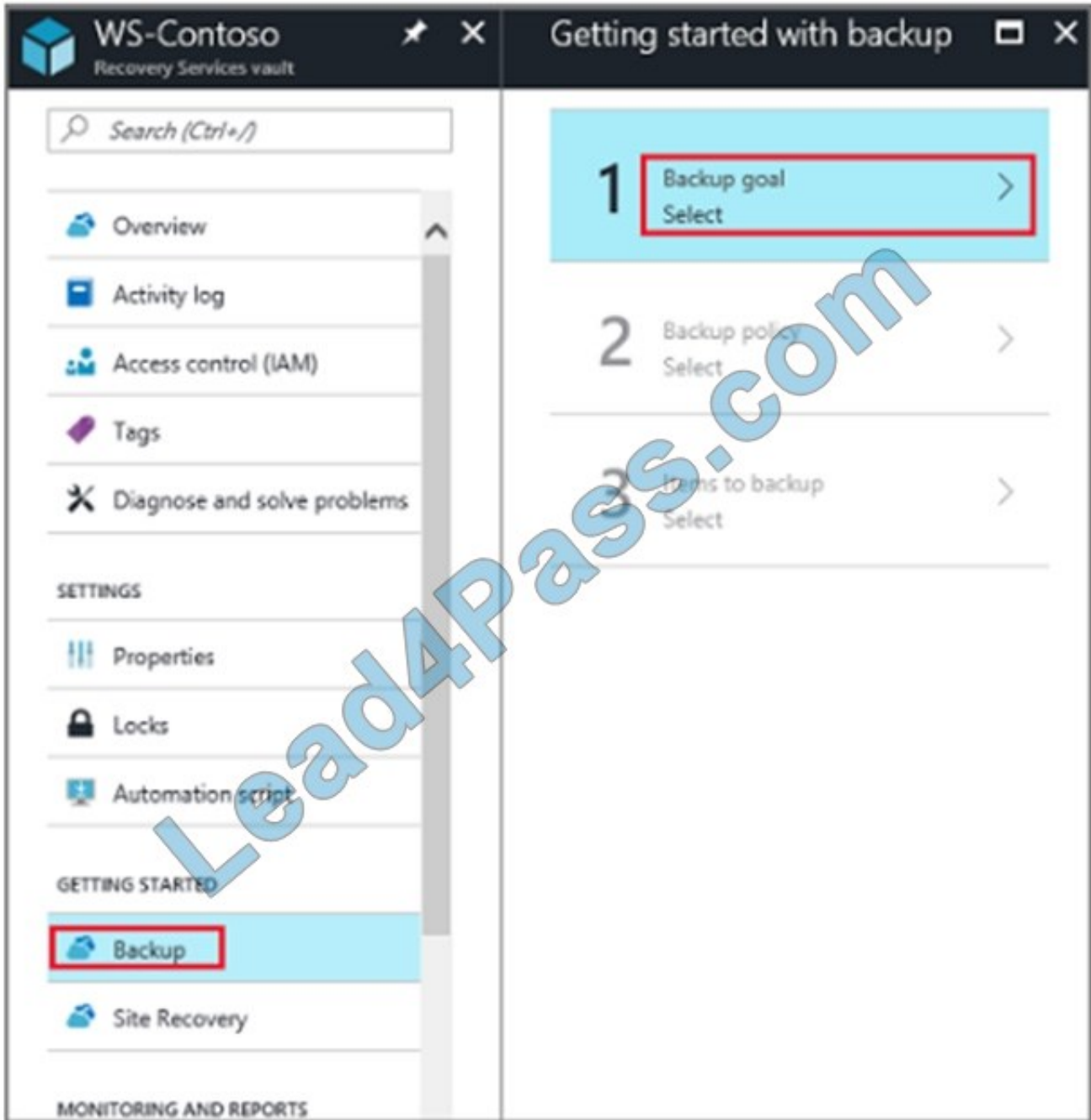
If there are recovery services vaults in the subscription, the vaults are listed. A2. On the Recovery Services vaults menu, click Add.



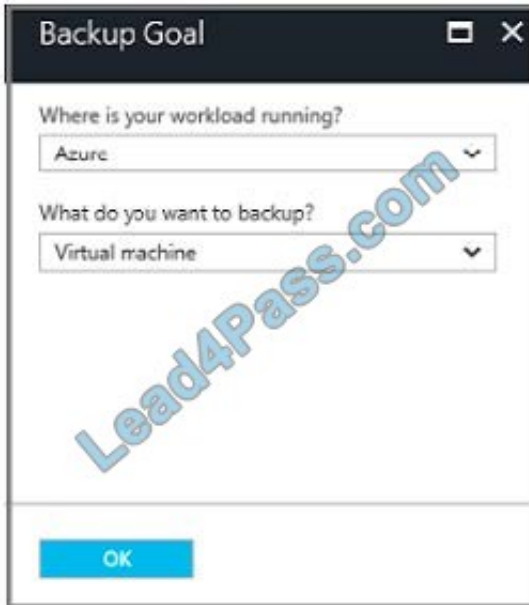
Task B. Create a backup goal

B1. On the Recovery Services vault blade (for the vault you just created), in the Getting Started section, click Backup, then on the Getting Started with Backup blade, select Backup goal.

A3. The Recovery Services vault blade opens, prompting you to provide a Name, Subscription, Resource group, and Location



The Backup Goal blade opens. If the Recovery Services vault has been previously configured, then the Backup Goal blades opens when you click Backup on the Recovery Services vault blade. B2. From the Where is your workload running? drop-down menu, select Azure.

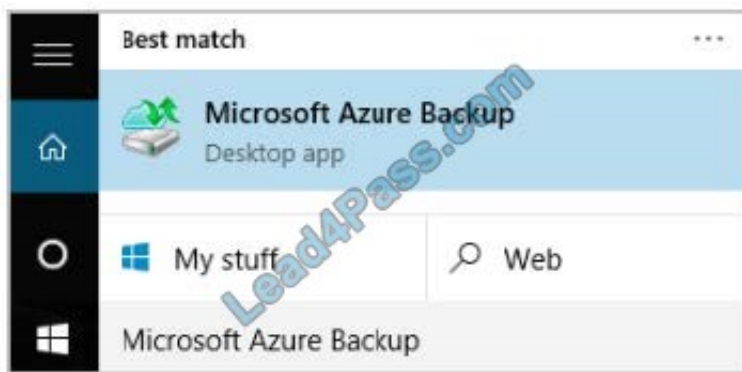


B3. From the What do you want to backup? menu, select Blob Storage, and click OK.

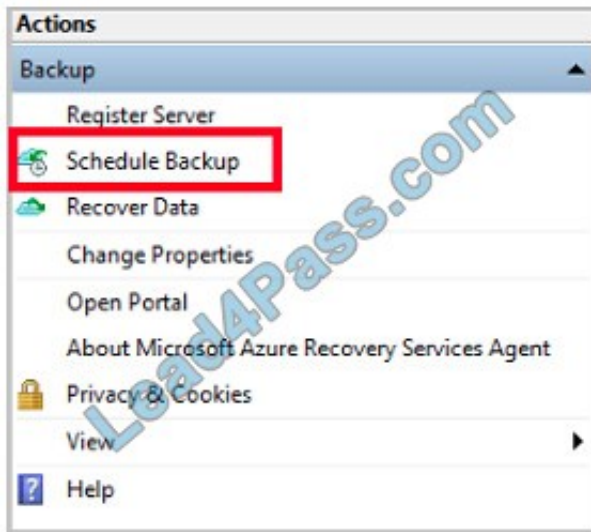
B4. Finish the Wizard.

Task C. create a backup schedule

C1. Open the Microsoft Azure Backup agent. You can find it by searching your machine for Microsoft Azure Backup.



C2. In the Backup agent's Actions pane, click Schedule Backup to launch the Schedule Backup Wizard.



C3. On the Getting started page of the Schedule Backup Wizard, click Next.

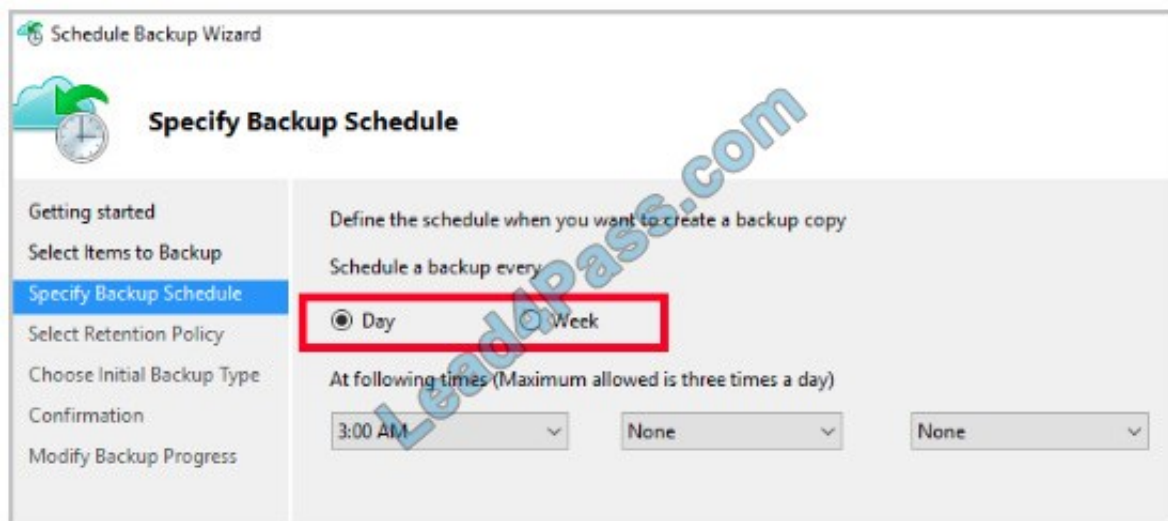
C4. On the Select Items to Backup page, click Add Items.

The Select Items dialog opens.

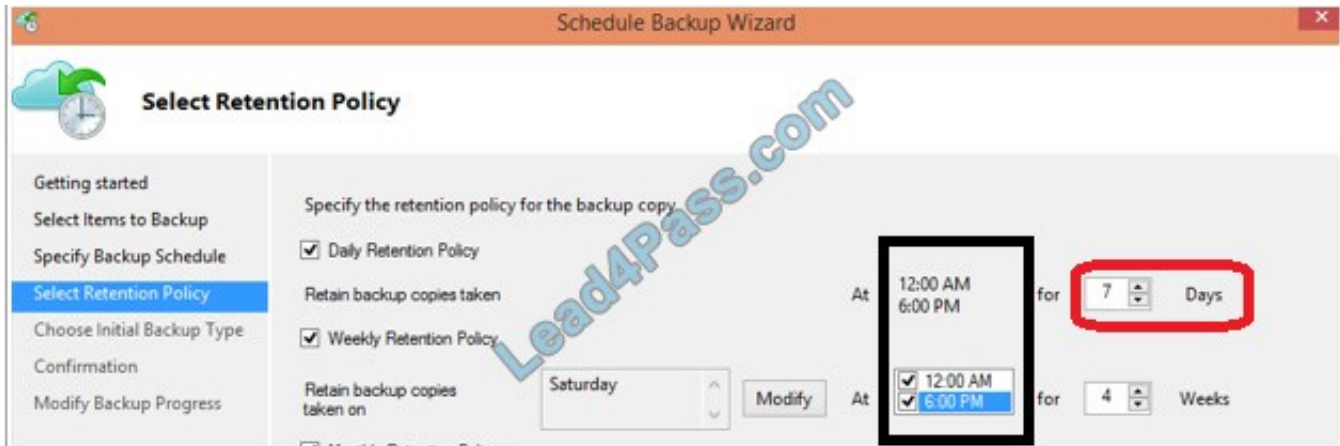
C5. Select Blob Storage you want to protect, and then click OK.

C6. In the Select Items to Backup page, click Next.

On the Specify Backup Schedule page, specify Schedule a backup every day, and click Next.



C7. On the Select Retention Policy page, set it to 14 days, and click Next.



C8. Finish the Wizard.

References: <https://docs.microsoft.com/en-us/azure/backup/backup-configure-vault>

QUESTION 4

Note: This question is part of a series of questions that present the same scenario. Each question in the series contains a unique solution that might meet the stated goals. Some question sets might have more than one correct solution, while

others might not have a correct solution.

After you answer a question in this section, you will NOT be able to return to it. As a result, these questions will not appear in the review screen.

You have an Azure virtual machine named VM1. VM1 was deployed by using a custom Azure Resource Manager template named ARM1.json.

You receive a notification that VM1 will be affected by maintenance.

You need to move VM1 to a different host immediately.

Solution: From the Overview blade, you move the virtual machine to a different resource group.

Does this meet the goal?

A. Yes

B. No

Correct Answer: B

You should redeploy the VM.

References: <https://docs.microsoft.com/en-us/azure/virtual-machines/windows/redeploy-to-new-node>

QUESTION 5



Your company has 100 users located in an office in Paris. The on-premises network contains the servers shown in the following table.

Name	Operating system	Configuration
Server1	Windows Server 2012 R2	Microsoft Exchange Server 2016
Server2	Windows Server 2016	Microsoft SQL Server 2016
Server3	Windows Server 2016	Domain controller
Server4	Red Hat Enterprise Linux 7.5	File server

You create a new subscription. You need to move all the servers to Azure.

Solution: You run azcopy.exe.

Does this meet the goal?

A. Yes

B. No

Correct Answer: B

[AZ-103 PDF Dumps](#)

[AZ-103 Practice Test](#)

[AZ-103 Study Guide](#)



To Read the [Whole Q&As](#), please purchase the [Complete Version](#) from [Our website](#).

Try our product !

100% Guaranteed Success

100% Money Back Guarantee

365 Days Free Update

Instant Download After Purchase

24x7 Customer Support

Average 99.9% Success Rate

More than 800,000 Satisfied Customers Worldwide

Multi-Platform capabilities - [Windows](#), [Mac](#), [Android](#), [iPhone](#), [iPod](#), [iPad](#), [Kindle](#)

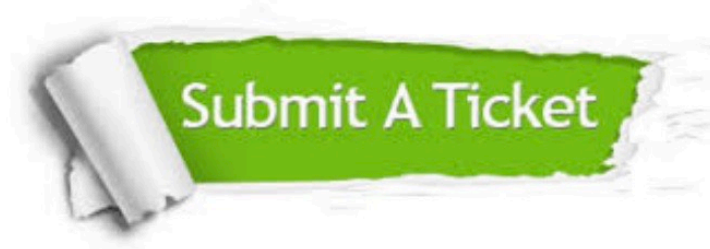
We provide exam PDF and VCE of Cisco, Microsoft, IBM, CompTIA, Oracle and other IT Certifications. You can view Vendor list of All Certification Exams offered:

<https://www.lead4pass.com/allproducts>

Need Help

Please provide as much detail as possible so we can best assist you.

To update a previously submitted ticket:



 <p>One Year Free Update Free update is available within One Year after your purchase. After One Year, you will get 50% discounts for updating. And we are proud to boast a 24/7 efficient Customer Support system via Email.</p>	 <p>Money Back Guarantee To ensure that you are spending on quality products, we provide 100% money back guarantee for 30 days from the date of purchase.</p>	 <p>Security & Privacy We respect customer privacy. We use McAfee's security service to provide you with utmost security for your personal information & peace of mind.</p>
---	---	--

Any charges made through this site will appear as Global Simulators Limited.

All trademarks are the property of their respective owners.

Copyright © lead4pass, All Rights Reserved.