



# AZ-102<sup>Q&As</sup>

Microsoft Azure Administrator Certification Transition

## Pass Microsoft AZ-102 Exam with 100% Guarantee

Free Download Real Questions & Answers **PDF** and **VCE** file from:

<https://www.lead4pass.com/az-102.html>

100% Passing Guarantee  
100% Money Back Assurance

Following Questions and Answers are all new published by Microsoft  
Official Exam Center

-  **Instant Download** After Purchase
-  **100% Money Back** Guarantee
-  **365 Days** Free Update
-  **800,000+** Satisfied Customers





### QUESTION 1

You have an Azure subscription named Subscription1 that contains a virtual network named VNet1.

VNet1 is in a resource group named RG1.

Subscription1 has a user named User1. User1 has the following roles:

1.  
Reader
2.  
Security Admin
3.  
Security Reader

You need to ensure that User1 can assign the Reader role for VNet1 to other users. What should you do?

- A. Remove User1 from the Security Reader and Reader roles for Subscription1. Assign User1 the Contributor role for Subscription1.
- B. Assign User1 the Owner role for VNet1
- C. Remove User1 from the Security Reader and Reader roles for Subscription1.
- D. Assign User1 the Network Contributor role for VNet1.

Correct Answer: B

References: <https://docs.microsoft.com/en-us/azure/role-based-access-control/built-in-roles>

### QUESTION 2

You have the Azure virtual machines shown in the following table.

Name	Azure region
VM1	West Europe
VM2	West Europe
VM3	North Europe
VM4	North Europe

You have a Recovery Services vault that protects VM1 and VM2. You need to protect VM3 and VM4 by using Recovery Services. What should you do first?

- A. Configure the extensions for VM3 and VM4.
- B. Create a new Recovery Services vault.



- C. Create a storage account.
- D. Create a new backup policy.

Correct Answer: B

A Recovery Services vault is a storage entity in Azure that houses data. The data is typically copies of data, or configuration information for virtual machines (VMs), workloads, servers, or workstations. You can use Recovery Services vaults to hold backup data for various Azure services

References: <https://docs.microsoft.com/en-us/azure/site-recovery/azure-to-azure-tutorial-enable-replication>

### QUESTION 3

You create an Azure Migrate project named TestMig in a resource group named test-migration.

You need to discover which on-premises virtual machines to assess for migration.

Which three actions should you perform in sequence? To answer, move the appropriate actions from the list of actions to the answer area and arrange them in the correct order.

Select and Place:

Actions	Answer Area
Create a collector virtual machine.	
Download the OVA file for the collector appliance.	
Create a migration group in the project.	
Configure the collector and start discovery.	
Create an assessment in the project.	

Correct Answer:



Actions	Answer Area
Create a collector virtual machine.	Download the OVA file for the collector appliance.
	Create a migration group in the project.
Configure the collector and start discovery.	Create an assessment in the project.

Step 1: Download the OVA file for the collection appliance

Azure Migrate uses an on-premises VM called the collector appliance, to discover information about your on-premises machines. To create the appliance, you download a setup file in Open Virtualization Appliance (.ova) format, and import it as a VM on your on-premises vCenter Server.

Step 2: Create a migration group in the project

For the purposes of assessment, you gather the discovered VMs into groups. For example, you might group VMs that run the same application. For more precise grouping, you can use dependency visualization to view dependencies of a specific machine, or for all machines in a group and refine the group.

Step 3: Create an assessment in the project

After a group is defined, you create an assessment for it.

References:

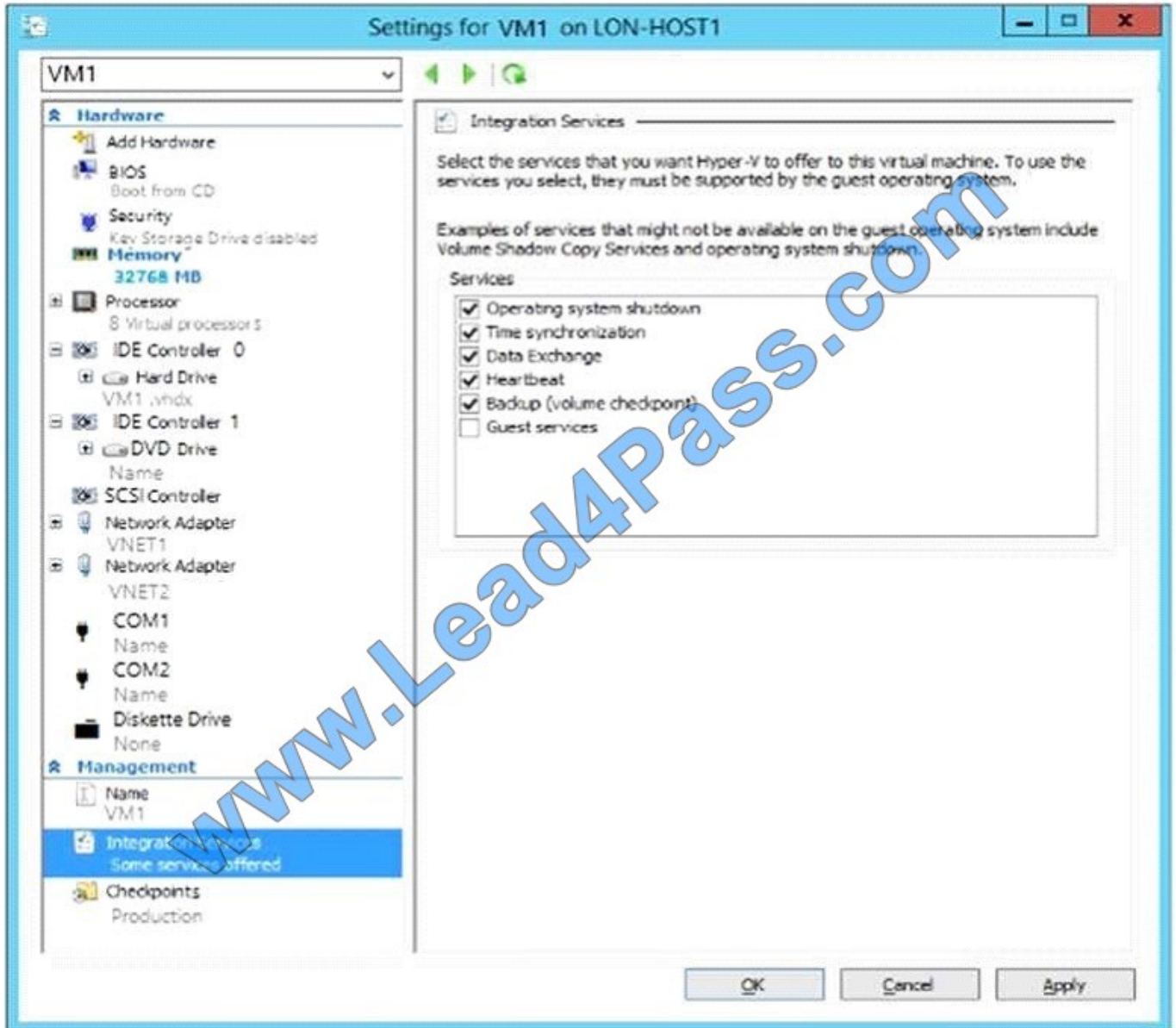
<https://docs.microsoft.com/en-us/azure/migrate/migrate-overview>

#### QUESTION 4

You have an Azure subscription.

You have an on-premises virtual machine named VM1. The settings for VM1 are shown in the exhibit.

(Click the Exhibit button.)



You need to ensure that you can use the disks attached to VM1 as a template for Azure virtual machines. What should you modify on VM1?

- A. Integration Services
- B. the network adapters
- C. the memory
- D. the hard drive
- E. the processor

Correct Answer: D

From the exhibit we see that the disk is in the VHDX format. Before you upload a Windows virtual machines (VM) from on-premises to Microsoft Azure, you must prepare the virtual hard disk (VHD or VHDX). Azure supports only generation 1 VMs that are in the VHD file format and have a fixed sized disk. The maximum size allowed for the VHD is 1,023 GB.



You can convert a generation 1 VM from the VHDX file system to VHD and from a dynamically expanding disk to fixed-sized. References: <https://docs.microsoft.com/en-us/azure/virtual-machines/windows/prepare-for-upload-vhd-image?toc=%2fazure%2fvirtual-machines%2fwindows%2ftoc.json>

---

## QUESTION 5

You have an Azure subscription.

Users access the resources in the subscription from either home or from customer sites. From home, users must establish a point-to-site VPN to access the Azure resources. The users on the customer sites access the Azure resources by

using site-to-site VPNs. You have a line-of-business app named App1 that runs on several Azure virtual machine. The virtual machines run Windows Server 2016.

You need to ensure that the connections to App1 are spread across all the virtual machines. What are two possible Azure services that you can use? Each correct answer presents a complete solution.

NOTE: Each correct selection is worth one point.

- A. a public load balancer
- B. Traffic Manager
- C. an Azure Content Delivery Network (CDN)
- D. an internal load balancer
- E. an Azure Application Gateway

Correct Answer: DE

[Latest AZ-102 Dumps](#)

[AZ-102 PDF Dumps](#)

[AZ-102 Braindumps](#)





To Read the [Whole Q&As](#), please purchase the [Complete Version](#) from [Our website](#).

## Try our product !

100% Guaranteed Success

100% Money Back Guarantee

365 Days Free Update

Instant Download After Purchase

24x7 Customer Support

Average 99.9% Success Rate

More than 800,000 Satisfied Customers Worldwide

Multi-Platform capabilities - [Windows](#), [Mac](#), [Android](#), [iPhone](#), [iPod](#), [iPad](#), [Kindle](#)

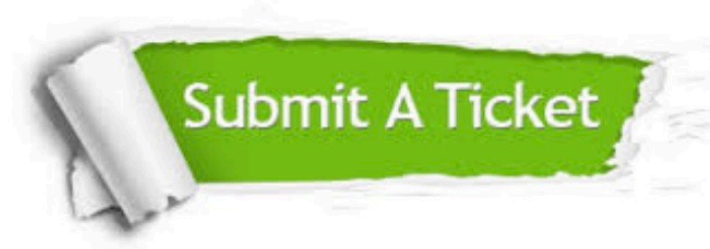
We provide exam PDF and VCE of Cisco, Microsoft, IBM, CompTIA, Oracle and other IT Certifications. You can view Vendor list of All Certification Exams offered:

<https://www.lead4pass.com/allproducts>

## Need Help

Please provide as much detail as possible so we can best assist you.

To update a previously submitted ticket:



 <p><b>One Year Free Update</b> Free update is available within One Year after your purchase. After One Year, you will get 50% discounts for updating. And we are proud to boast a 24/7 efficient Customer Support system via Email.</p>	 <p><b>Money Back Guarantee</b> To ensure that you are spending on quality products, we provide 100% money back guarantee for 30 days from the date of purchase.</p>	 <p><b>Security &amp; Privacy</b> We respect customer privacy. We use McAfee's security service to provide you with utmost security for your personal information &amp; peace of mind.</p>
---	---	--

Any charges made through this site will appear as Global Simulators Limited.

All trademarks are the property of their respective owners.

Copyright © lead4pass, All Rights Reserved.