



AZ-102^{Q&As}

Microsoft Azure Administrator Certification Transition

Pass Microsoft AZ-102 Exam with 100% Guarantee

Free Download Real Questions & Answers **PDF** and **VCE** file from:

<https://www.lead4pass.com/az-102.html>

100% Passing Guarantee
100% Money Back Assurance

Following Questions and Answers are all new published by Microsoft
Official Exam Center

-  **Instant Download** After Purchase
-  **100% Money Back** Guarantee
-  **365 Days** Free Update
-  **800,000+** Satisfied Customers





QUESTION 1

You need to create a function app named corp7509086n1 that supports sticky sessions. The solution must minimize the Azure-related costs of the App Service plan. What should you do from the Azure portal?

A. Check the answer in explanation.

Correct Answer: A

See below.

Step 1:

Select the New button found on the upper left-hand corner of the Azure portal, then select Compute > Function App.

Step 2:

Use the function app settings as listed below.

App name: corp7509086n1

Hosting plan: Azure App Service plan

(need this for the sticky sessions)

Pricing tier of the the App Service plan: Shared compute: Free

Step 3:

Select Create to provision and deploy the function app.

References:

<https://docs.microsoft.com/en-us/azure/azure-functions/functions-create-function-app-portal>

QUESTION 2

You configure Azure AD Connect for Azure Active Directory Seamless Single Sign-On (Azure AD Seamless SSO) for an on-premises network. Users report that when they attempt to access myapps.microsoft.com, they are prompted multiple

times to sign in and are forced to use an account name that ends with onmicrosoft.com.

You discover that there is a UPN mismatch between Azure AD and the on-premises Active Directory. You need to ensure that the users can use single-sign on (SSO) to access Azure resources.

What should you do first?

A. From the on-premises network, deploy Active Directory Federation Services (AD FS).

B. From Azure AD, add and verify a custom domain name.

C. From the on-premises network, request a new certificate that contains the Active Directory domain name.



D. From the server that runs Azure AD Connect, modify the filtering options.

Correct Answer: B

Azure AD Connect lists the UPN suffixes that are defined for the domains and tries to match them with a custom domain in Azure AD. Then it helps you with the appropriate action that needs to be taken. The Azure AD sign-in page lists the

UPN suffixes that are defined for on-premises Active Directory and displays the corresponding status against each suffix. The status values can be one of the following:

State: Verified

Azure AD Connect found a matching verified domain in Azure AD. All users for this domain can sign in by using their on-premises credentials.

State: Not verified

Azure AD Connect found a matching custom domain in Azure AD, but it isn't verified. The UPN suffix of the users of this domain will be changed to the default .onmicrosoft.com suffix after synchronization if the domain isn't verified.

Action Required: Verify the custom domain in Azure AD.

References: <https://docs.microsoft.com/en-us/azure/active-directory/hybrid/plan-connect-user-signin>

QUESTION 3

You have an Azure Service Bus.

You need to implement a Service Bus queue that guarantees first in first-out (FIFO) delivery of messages.

What should you do?

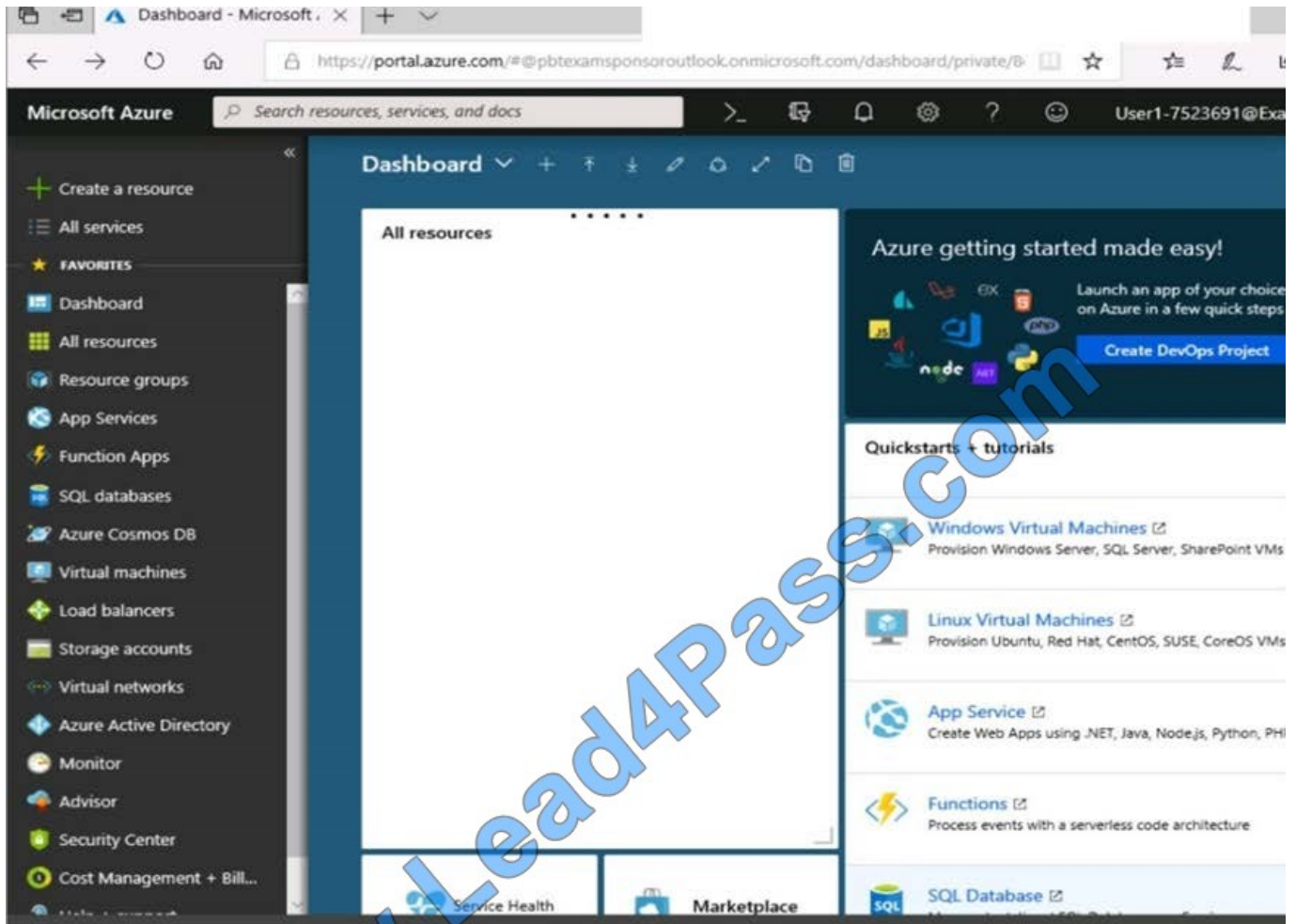
- A. Set the Lock Duration setting to 10 seconds.
- B. Enable duplicate detection.
- C. Set the Max Size setting of the queue to 5 GB.
- D. Enable partitioning.
- E. Enable sessions.

Correct Answer: E

Through the use of messaging sessions you can guarantee ordering of messages, that is first-in-first-out (FIFO) delivery of messages. References: <https://docs.microsoft.com/en-us/azure/service-bus-messaging/service-bus-azure-and-service-bus-queues-compared-contrasted>

QUESTION 4

SIMULATION Click to expand each objective. To connect to the Azure portal, type <https://portal.azure.com> in the browser address bar.



- Instructions
- Comments
- Controls Available
- Keyboard Shortcuts Available

Tasks

Click to expand each objective

- Configure servers
 - Add the "Print and Document Services" role to server LON-SVRT, installing any required management features and enabling both Print and LPD Services.
- + Configure file and share access

When you are finished performing all the tasks, click the "Next" button.

Note that you cannot return to the lab once you click the "Next" button. Scoring occur in the background while you complete the rest of the exam.

Overview

The following section of the exam is a lab. In this section, you will perform a set of tasks in a live environment. While



most functionality will be available to you as it would be in a live environment, some functionality (e.g., copy and paste, ability to navigate to external websites) will not be possible by design. Scoring is based on the outcome of performing the tasks stated in the lab. In other words, it doesn't matter how you accomplish the task, if you successfully perform it, you will earn credit for that task.

Labs are not timed separately, and this exam may have more than one lab that you must complete. You can use as much time as you would like to complete each lab. But, you should manage your time appropriately to ensure that you are able to complete the lab(s) and all other sections of the exam in the time provided.

Please note that once you submit your work by clicking the Next button within a lab, you will NOT be able to return to the lab.

To start the lab

You may start the lab by clicking the Next button.

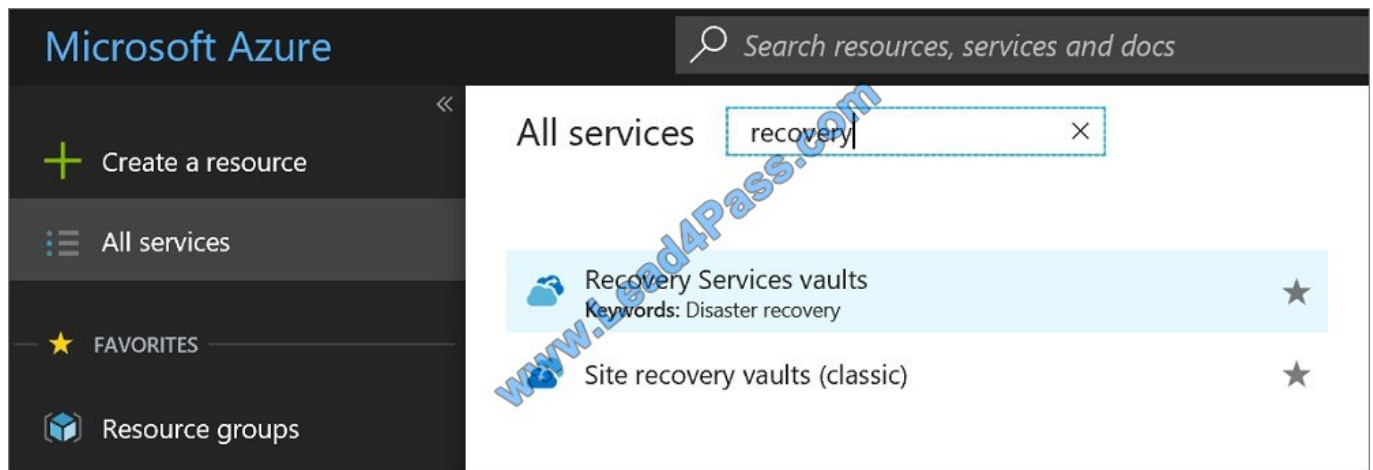
You plan to protect on-premises virtual machines and Azure virtual machines by using Azure Backup. You need to prepare the backup infrastructure in Azure. The solution must minimize the cost of storing the backups in Azure.

What should you do from the Azure portal?

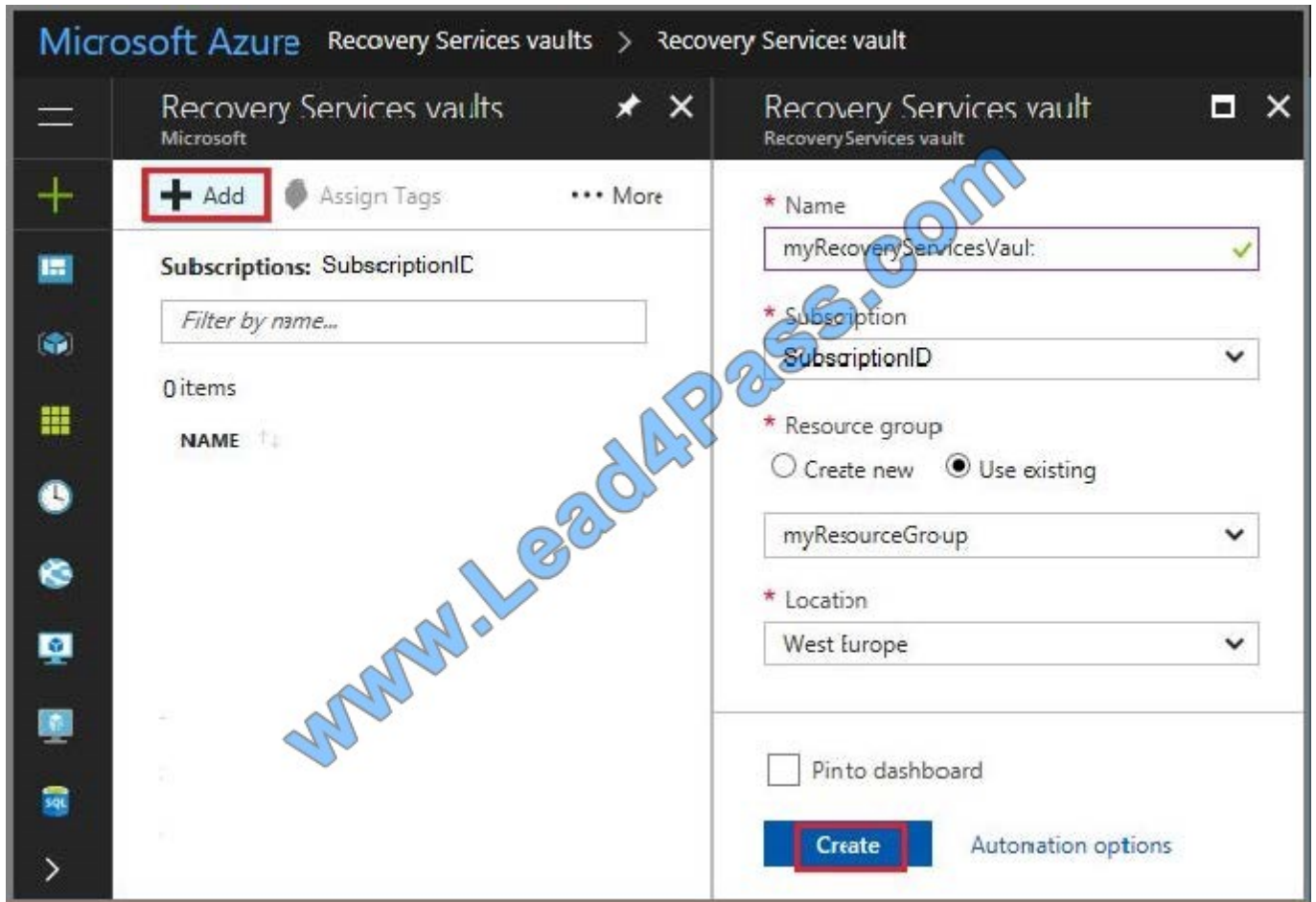
Correct Answer:

First, create Recovery Services vault.

Step 1: On the left-hand menu, select All services and in the services list, type Recovery Services. As you type, the list of resources filters. When you see Recovery Services vaults in the list, select it to open the Recovery Services vaults menu.



Step 2: In the Recovery Services vaults menu, click Add to open the Recovery Services vault menu.



Step 3: In the Recovery Services vault menu, for example,

Type myRecoveryServicesVault in Name.

The current subscription ID appears in Subscription. If you have additional subscriptions, you could choose another subscription for the new vault.

For Resource group select Use existing and choose myResourceGroup. If myResourceGroup doesn't exist, select Create new and type myResourceGroup.

From the Location drop-down menu, choose West Europe.

Click Create to create your Recovery Services vault.

References: <https://docs.microsoft.com/en-us/azure/backup/tutorial-backup-vm-at-scale>

QUESTION 5

You have an Azure Active Directory (Azure AD) tenant. All administrators must enter a verification code to access the Azure portal. You need to ensure that the administrators can access the Azure portal only from your on-premises network. What should you configure?

A. the multi-factor authentication service settings



- B. an Azure AD Identity Protection user risk policy
- C. the default for all the roles in Azure AD Privileged Identity Management
- D. an Azure AD Identity Protection sign-in risk policy

Correct Answer: A

[Latest AZ-102 Dumps](#)

[AZ-102 Practice Test](#)

[AZ-102 Exam Questions](#)



To Read the [Whole Q&As](#), please purchase the [Complete Version](#) from [Our website](#).

Try our product !

100% Guaranteed Success

100% Money Back Guarantee

365 Days Free Update

Instant Download After Purchase

24x7 Customer Support

Average 99.9% Success Rate

More than 800,000 Satisfied Customers Worldwide

Multi-Platform capabilities - [Windows](#), [Mac](#), [Android](#), [iPhone](#), [iPod](#), [iPad](#), [Kindle](#)

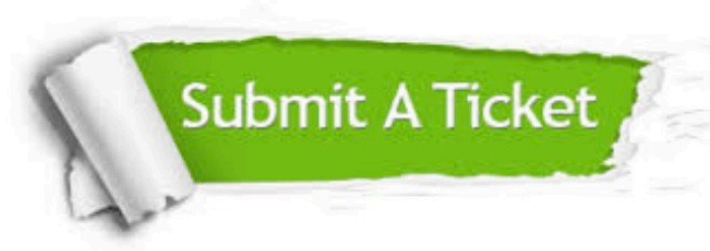
We provide exam PDF and VCE of Cisco, Microsoft, IBM, CompTIA, Oracle and other IT Certifications. You can view Vendor list of All Certification Exams offered:

<https://www.lead4pass.com/allproducts>

Need Help

Please provide as much detail as possible so we can best assist you.

To update a previously submitted ticket:



 <p>One Year Free Update Free update is available within One Year after your purchase. After One Year, you will get 50% discounts for updating. And we are proud to boast a 24/7 efficient Customer Support system via Email.</p>	 <p>Money Back Guarantee To ensure that you are spending on quality products, we provide 100% money back guarantee for 30 days from the date of purchase.</p>	 <p>Security & Privacy We respect customer privacy. We use McAfee's security service to provide you with utmost security for your personal information & peace of mind.</p>
---	---	--

Any charges made through this site will appear as Global Simulators Limited.

All trademarks are the property of their respective owners.

Copyright © lead4pass, All Rights Reserved.