

ACLS^{Q&As}

Advanced Cardiac Life Support

Pass Test Prep ACLS Exam with 100% Guarantee

Free Download Real Questions & Answers **PDF** and **VCE** file from:

<https://www.leads4pass.com/acls.html>

100% Passing Guarantee
100% Money Back Assurance

Following Questions and Answers are all new published by Test Prep
Official Exam Center

- ⚙️ **Instant Download** After Purchase
- ⚙️ **100% Money Back** Guarantee
- ⚙️ **365 Days** Free Update
- ⚙️ **800,000+** Satisfied Customers



QUESTION 1

FILL BLANK

What is the single most important ACLS intervention?

A. Identification and treatment of ventricular fibrillation.

Correct Answer: A

QUESTION 2

An incubated patient develops sudden onset narrow complex tachycardia, at a rate of 130 beats per minute.

Vital signs are 0-0-0. CPR is in progress. The most important action is:

A. find the cause of the arrest

B. give 1 mg epinephrine IVP

C. give verapamil 5 mg IVP

D. cardiovert at 360 J

Correct Answer: B

QUESTION 3

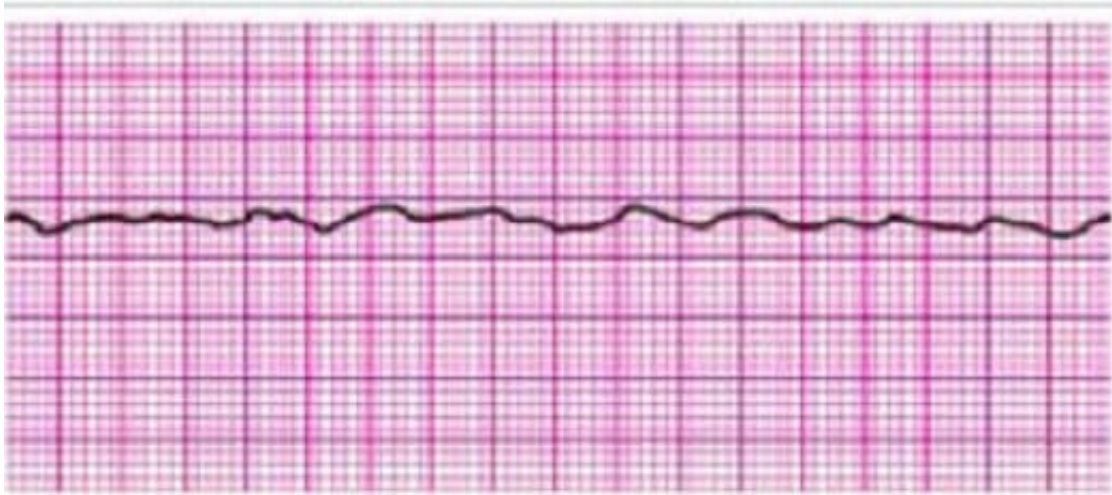
SIMULATION

If while ventilating a patient the chest does not rise and fall, what should you do after checking for obstruction?

A. Use alternative method of artificial ventilation, e.g., pocket mask, manually triggered device. If necessary, consider the use of adjuncts such as oral or nasal airways.

Correct Answer: A

QUESTION 4



Identify the rhythm by selecting the best single answer:

- A. Normal sinus rhythm
- B. Sinus tachycardia
- C. Sinus bradycardia
- D. Reentry supraventricular tachycardia
- E. First-degree AV Block
- F. Second-degree AV Block (Mobitz 1 Wenckebach)
- G. Second-degree AV Block (Mobitz II Block)
- H. Third-degree AV Block
- I. Atrial fibrillation
- J. Atrial flutter
- K. Monomorphic ventricular tachycardia
- L. Polymorphic ventricular tachycardia
- M. Coarse ventricular fibrillation
- N. Fine ventricular fibrillation
- O. Agonal rhythm/asystole
- P. Pulseless electrical activity

Correct Answer: N

QUESTION 5

Regarding epinephrine, which of the following statements are true? (Choose three.)

- A. increases coronary perfusion
- B. IV bolus dose is 1 mg q 3? minutes
- C. treatment for hypotensive ventricular tachycardia
- D. increases cerebral blood flow during CPR

Correct Answer: ABC

[ACLS PDF Dumps](#)

[ACLS Exam Questions](#)

[ACLS Braindumps](#)