

## ACLS<sup>Q&As</sup>

Advanced Cardiac Life Support

### Pass Test Prep ACLS Exam with 100% Guarantee

Free Download Real Questions & Answers **PDF** and **VCE** file from:

<https://www.leads4pass.com/acls.html>

100% Passing Guarantee  
100% Money Back Assurance

Following Questions and Answers are all new published by Test Prep  
Official Exam Center

-  **Instant Download** After Purchase
-  **100% Money Back** Guarantee
-  **365 Days** Free Update
-  **800,000+** Satisfied Customers



**QUESTION 1**

## SIMULATION

Infants and young children are at great risk of generalized hypothermia. What factors increase their risk?

A. Infants and young children are small with large surface areas. The small muscle mass does not allow adequate shivering in children and none at all in infants. They have less body fat to insulate them from the environment. Younger children need help to protect themselves. They are unable to put on or take off their clothes, which afford them protection in a given environment.

Correct Answer: A

---

**QUESTION 2**

SIMULATION Define negligence.

A. Negligence is the deviation from the accepted standard of care resulting in further injury to the patient.

Correct Answer: A

---

**QUESTION 3**

FILL BLANK

Should the pulse be checked between shocks in a patient that displays persistent VF/VT?

A. CPR should be started after each defibrillation where no spontaneous sinus rhythm has been restored.

Correct Answer: A

---

**QUESTION 4**

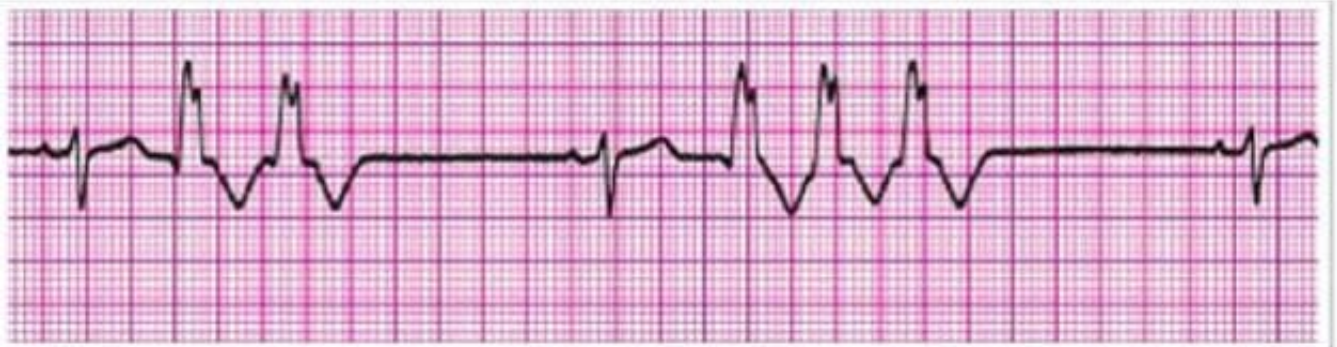
SIMULATION

When does the principle of implied consent apply to children?

A. When life-threatening situations exist and the parent or legal guardian is not available for consent.

Correct Answer: A

---

**QUESTION 5**

A patient has been resuscitated from cardiac arrest and is being prepared for transport. She is incubated and is receiving 100% oxygen. During the resuscitation she received 2 doses of epinephrine 1 mg, atropine 1 mg, and lidocaine 100 mg IV. You now observe the above rhythm on the cardiac monitor. The rhythm abnormality is becoming more frequent and increasing in number. You should order:

- A. Give amiodarone 300 mg IV, start infusion
- B. Give lidocaine 1 to 1.5 mg IV
- C. Repeat epinephrine 1 mg IV
- D. Give lidocaine 0.5 to 0.75 mg/kg IV, start lidocaine infusion
- E. Give amiodarone 150 mg IV, start infusion

Correct Answer: D

[ACLS PDF Dumps](#)

[ACLS Study Guide](#)

[ACLS Exam Questions](#)