

ACCP-V6.2^{Q&As}

Aruba Certified Clearpass Professional v6.2

Pass Aruba ACCP-V6.2 Exam with 100% Guarantee

Free Download Real Questions & Answers **PDF** and **VCE** file from:

<https://www.lead4pass.com/accp-v6-2.html>

100% Passing Guarantee
100% Money Back Assurance

Following Questions and Answers are all new published by Aruba
Official Exam Center

-  **Instant Download** After Purchase
-  **100% Money Back** Guarantee
-  **365 Days** Free Update
-  **800,000+** Satisfied Customers



QUESTION 1

Refer to the screenshot below: This authentication method is applied to a service processing EAP-TLS authentications. Which of the following is FALSE?

The screenshot shows the Aruba ClearPass Policy Manager interface. The left sidebar contains a navigation menu with categories: Dashboard, Monitoring, Configuration, Authentication, Identity, Posture, Enforcement, and Network. The 'Authentication' section is expanded, showing 'Methods' and 'Sources'. The main content area displays the 'Edit Authentication Method' configuration for a method named '[EAP TLS With OCSP Enabled]'. The configuration is divided into two sections: 'General' and 'Method Details'.

General	
Name:	[EAP TLS With OCSP Enabled]
Description:	EAP-TLS with OCSP enabled; recommended for Onboard
Type:	EAP-TLS

Method Details	
Session Resumption:	<input type="checkbox"/> Enable
Session Timeout:	6 hours
Authorization Required:	<input checked="" type="checkbox"/> Enable
Certificate Comparison:	Do not compare
Verify Certificate using OCSP:	Required
Override OCSP URL from Client:	<input checked="" type="checkbox"/> Enable
OCSP URL:	http://localhost/guest/mdps_ocsp

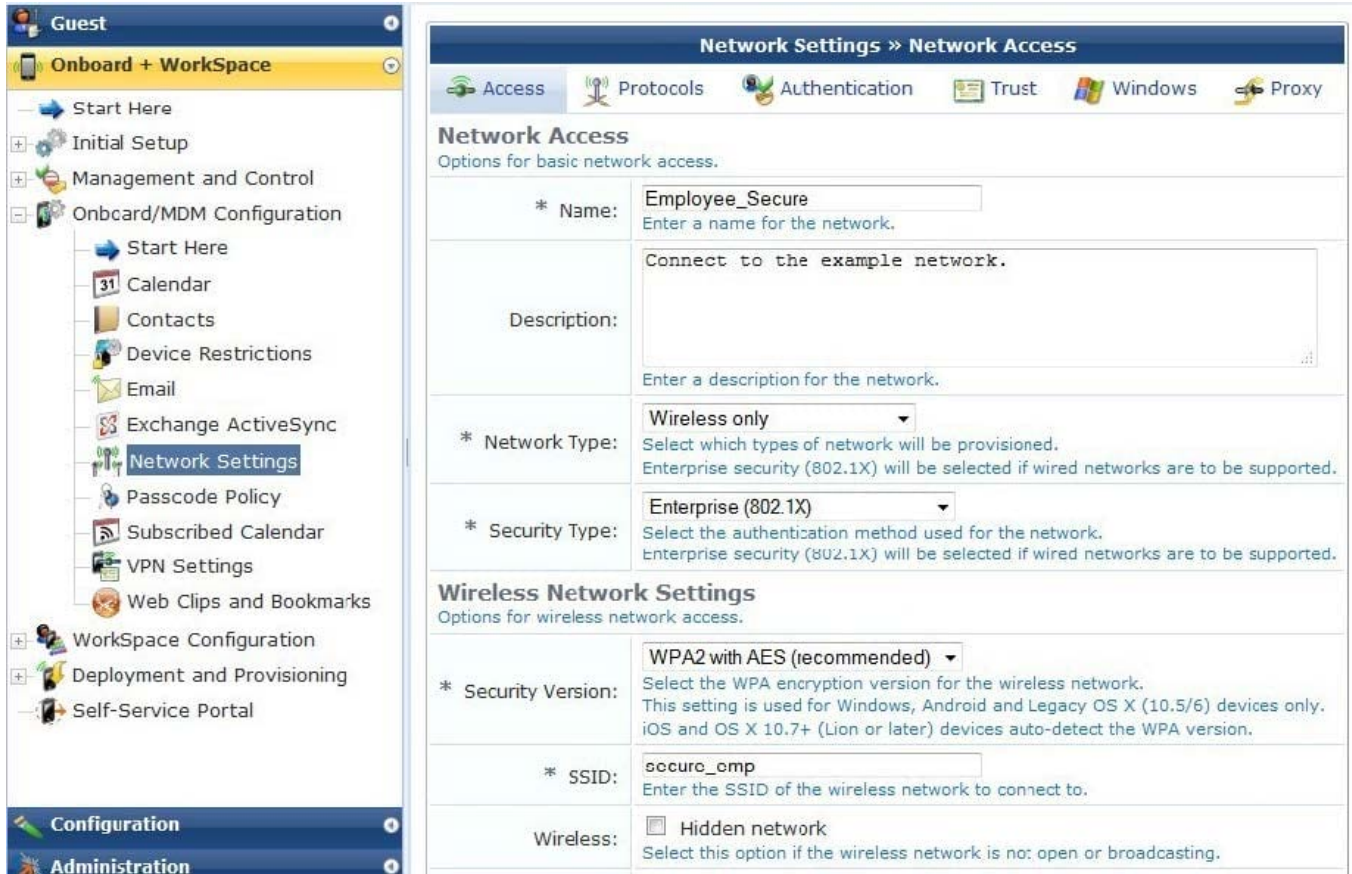
Buttons: Copy, Save, Cancel

- A. Devices with revoked certificates will not be allowed access
- B. Devices with deleted certificates will not be allowed access
- C. Devices will perform OCSP check to their laptop's localhost OCSP server
- D. Devices will perform OCSP check with Clearpass

Correct Answer: C

QUESTION 2

Refer to the screenshot below:



Which of the following statements is true regarding the above configuration for network settings? (Choose 2)

- A. Onboarded devices will connect to Employee_Secure SSID after provisioning.
- B. Onboarded devices will connect to secure_emp SSID after provisioning.
- C. Users will connect to Employee_Secure SSID for provisioning their devices.
- D. Users must enter a Pre-shared key to connect to the network.
- E. Users will do 802.1X authentication when connecting to the SSID.

Correct Answer: BE

QUESTION 3

A customer would like to deploy ClearPass with the following objectives: they have between 2000 to 3000 corporate users that need to authenticate daily using EAP-TLS. They want to allow for up to 1000 employee devices to be onboarded. They would also like to allow up to 100 different guest users each day to authenticate using the web login feature.

Which of the following best describes the license mix that they need to purchase?

- A. CP-HW-5k, 100 Onboard, 100 Guest.
- B. CP-HW-500, 1000 Onboard, 100 Guest.

C. CP-HW-2k, 1000 Onboard, 100 Guest.

D. CP-HW-5k, 2500 Enterprise.

E. CP-HW-5k, 1000 Enterprise.

Correct Answer: D

QUESTION 4

Which of the following devices support Apple over-the-air provisioning? (Choose 2)

A. Laptop running Mac OS X 10.6

B. Laptop running Mac OS X 10.8

C. iOS 5

D. Android 2.2

E. Windows XP

Correct Answer: BC

QUESTION 5

Which of the following statements is NOT true about the configuration of a generic LDAP server as an External Authentication Server in Clearpass?

A. The bind DN can be in the administrator@domain format.

B. The list of attributes fetched from an LDAP server can be customized.

C. An LDAP Browser can be used to search the Base DN.

D. Multiple LDAP servers cannot be configured as authentication sources.

E. Generic LDAP servers can be used as authentication sources.

Correct Answer: A

[ACCP-V6.2 VCE Dumps](#)

[ACCP-V6.2 Practice Test](#)

[ACCP-V6.2 Braindumps](#)