

## A00-270<sup>Q&As</sup>

SAS BI Content Development

### Pass SASInstitute A00-270 Exam with 100% Guarantee

Free Download Real Questions & Answers **PDF** and **VCE** file from:

<https://www.leads4pass.com/a00-270.html>

100% Passing Guarantee  
100% Money Back Assurance

Following Questions and Answers are all new published by SASInstitute Official Exam Center

-  **Instant Download** After Purchase
-  **100% Money Back** Guarantee
-  **365 Days** Free Update
-  **800,000+** Satisfied Customers



## QUESTION 1

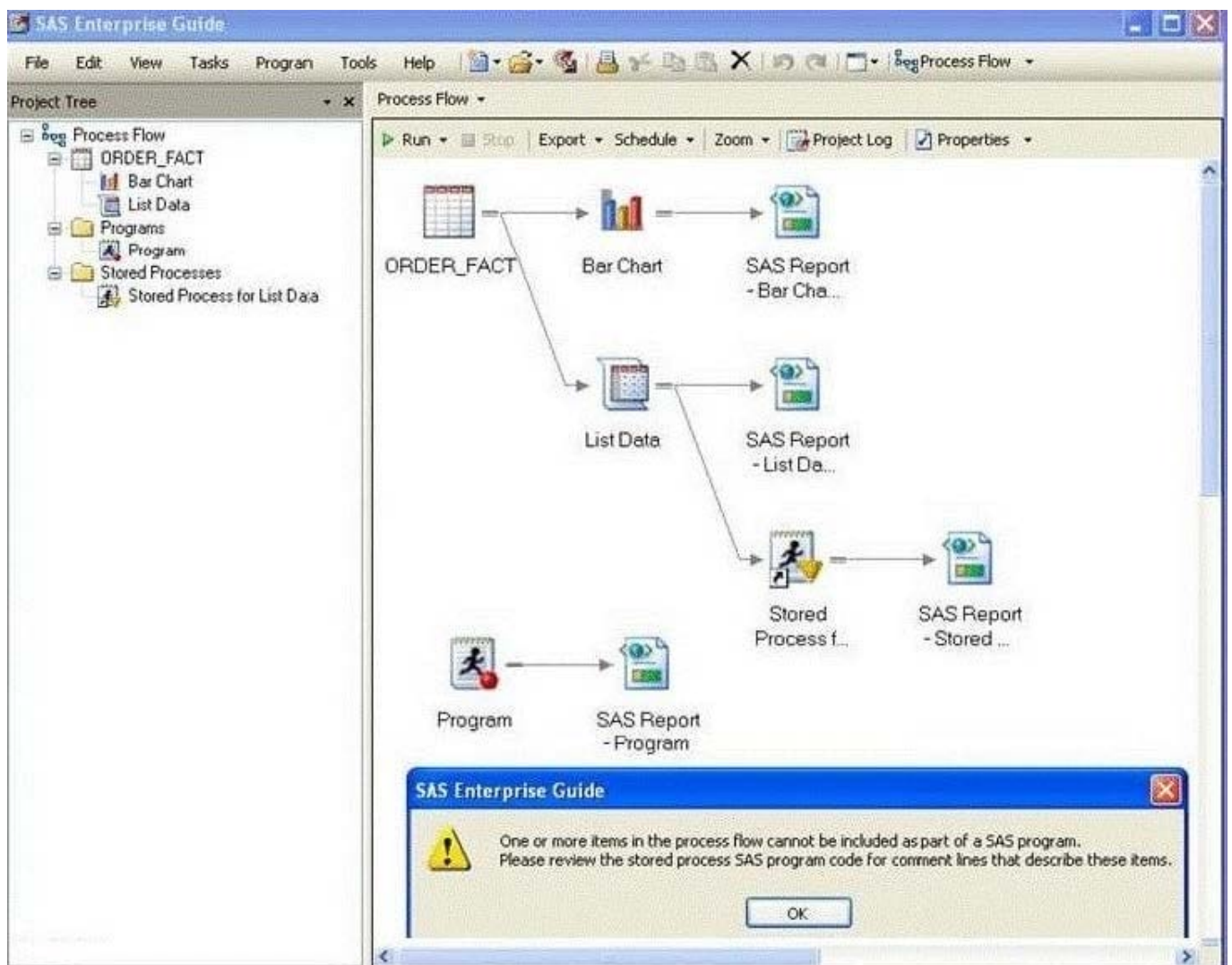
In SAS Information Map Studio, how are cascading prompts created?

- A. Create a compound filter with prompts and establish dependencies between prompts
- B. Use the cascading prompt wizard located on the tools menu
- C. Create individual filters and link them together on the relationships tab
- D. Create individual prompted filters and establish dependencies between filters option

Correct Answer: D

## QUESTION 2

Refer to the exhibit.



When attempting to create a stored process from the entire SAS Enterprise Guide project (Process Flow)

you receive a warning message window (shown in the exhibit). The warning message is a result of the project containing:

- A. a data source
- B. multiple tasks
- C. a code node
- D. a stored process

Correct Answer: D

---

### QUESTION 3

While using the SAS add-in Excel, a user wants to update their prompted stored process results with new prompt values. What should the user do?

- A. Reconnect to the metadata server
- B. Reopen the workbook
- C. Use the modify button
- D. Use the refresh button

Correct Answer: D

---

### QUESTION 4

Which component can be added to a Dashboard Object in a SAS BI Dashboard?

- A. Static Label
- B. Range
- C. Dashboard
- D. Dynamic Label

Correct Answer: B

---

### QUESTION 5

When a SAS Web Report Studio report is built, the default behavior is to produce an aggregated report with measures summed. Average is a more appropriate aggregation for an age data item. In the information map, how can the aggregation be changed to average the measures?

- A. Change the default aggregation function to MEAN on the Properties of the data item.

- B. After the default aggregation is set, it cannot be changed in the information map.
- C. Change the measure's classification to MEAN.
- D. Change the format of the data item to AVERAGEw.d.

Correct Answer: A

[Latest A00-270 Dumps](#)

[A00-270 Practice Test](#)

[A00-270 Study Guide](#)