

9L0-422^{Q&As}

OS X Support Essentials 10.10

Pass Apple 9L0-422 Exam with 100% Guarantee

Free Download Real Questions & Answers **PDF** and **VCE** file from:

<https://www.leads4pass.com/9l0-422.html>

100% Passing Guarantee
100% Money Back Assurance

Following Questions and Answers are all new published by Apple
Official Exam Center

-  **Instant Download** After Purchase
-  **100% Money Back** Guarantee
-  **365 Days** Free Update
-  **800,000+** Satisfied Customers



QUESTION 1

Review the screenshot from FileVault preferences, then answer the question below.



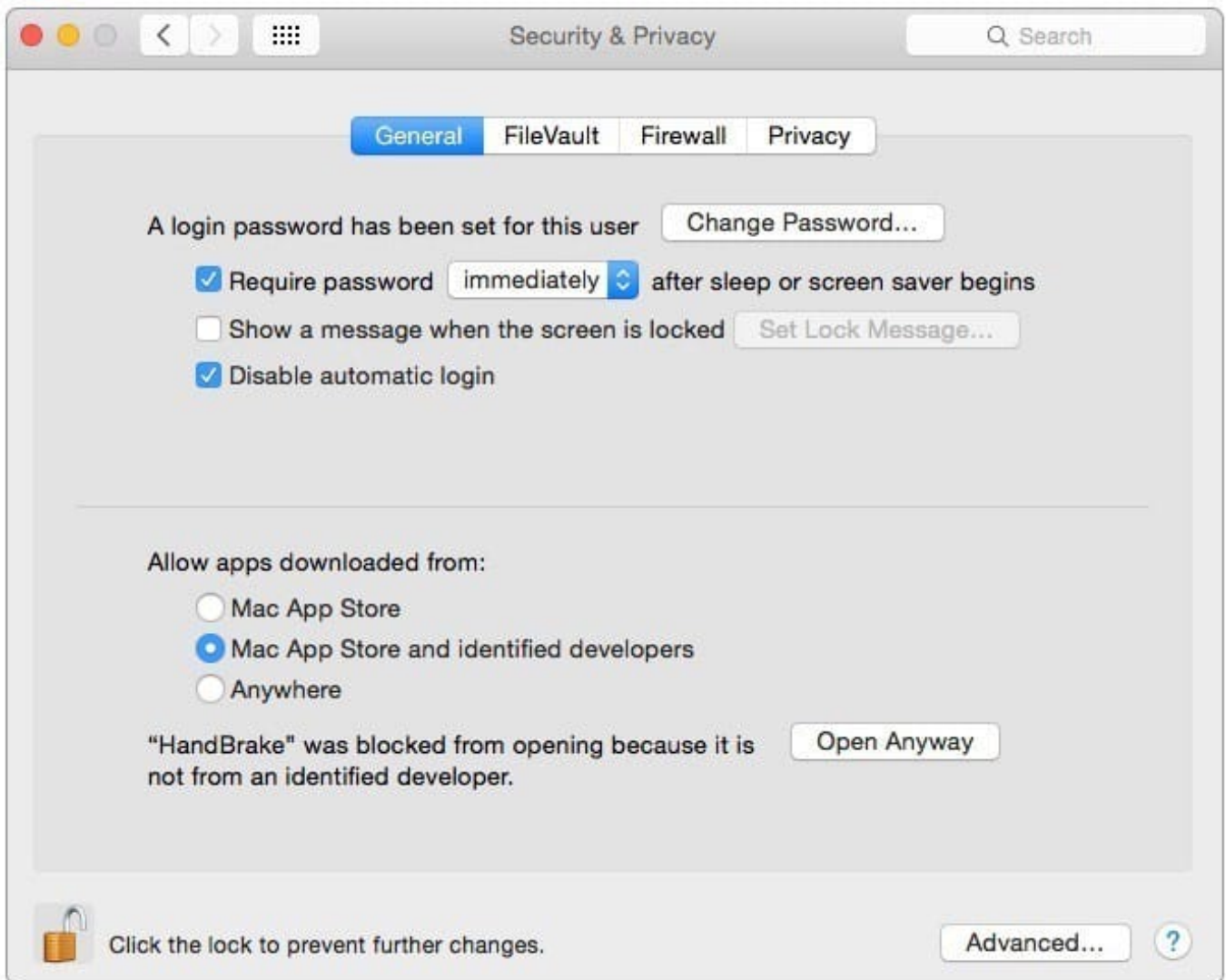
You click the Enable User button for the Bill Sykes account. What happens next?

- A. An alert message appears that says Bill Sykes will be prompted to enter the Recovery Key at next login.
- B. An alert message appears that says FileVault is now enabled for the Bill Sykes account.
- C. You'll be prompted to enter an administrator password to enable FileVault on the Bill Sykes account.
- D. You'll be prompted to enter the Bill Sykes login password to enable FileVault on the Bill Sykes account.

Correct Answer: C

QUESTION 2

Review the screenshot of a system configuration, then answer the question below.



Your Mac is configured as shown in the screenshot. Using Safari, you download an app from an unidentified developer and double-click the app icon. What happens?

- A. The app opens without an alert message.
- B. The app opens after an alert message that the app is from an unidentified developer.
- C. An alert message asks whether you want to open this app from an unidentified developer.
- D. The app doesn't open, and an alert message tells you that the app is from an unidentified developer.

Correct Answer: D

QUESTION 3

How do you start up an OS X computer in single-user mode?

- A. Start up from the Recovery system partition and enter the command `reboot -single` in Terminal.
- B. Hold down Command-S while the computer starts up.
- C. Hold down Shift-Option while the computer starts up.
- D. Select Single-User Mode in the Startup Disk pane of System Preferences, then restart the computer.

Correct Answer: B

QUESTION 4

What's the role of the `launchd` process when an OS X computer starts up?

- A. The `init` process starts `launchd`, then `launchd` starts the scripts stored in `/etc/cron/`.
- B. The kernel starts `launchd`, then `launchd` starts all the other processes involved in startup.
- C. `launchd` starts the kernel, the kernel starts all the other processes involved in startup.
- D. The `init` process starts `launchd`, then `launchd` starts the items stored in the Startup folder.

Correct Answer: B

QUESTION 5

In the screenshot, click the icon of the OS X System Preferences pane where you can enable the feature that restores windows when apps are reopened.

Hot Area:



Correct Answer:



[9L0-422 PDF Dumps](#)

[9L0-422 Study Guide](#)

[9L0-422 Braindumps](#)