

9L0-012^{Q&As}

Mac Service Certification Exam

Pass Apple 9L0-012 Exam with 100% Guarantee

Free Download Real Questions & Answers **PDF** and **VCE** file from:

<https://www.leads4pass.com/9l0-012.html>

100% Passing Guarantee
100% Money Back Assurance

Following Questions and Answers are all new published by Apple
Official Exam Center

- ⚙️ **Instant Download** After Purchase
- ⚙️ **100% Money Back** Guarantee
- ⚙️ **365 Days** Free Update
- ⚙️ **800,000+** Satisfied Customers



QUESTION 1

Before leaving your bench to take a logic board to a storage place, where should you place the logic board?

- A. On top of an ESD shielding bag
- B. Inside an ESD shielding bag
- C. Inside a cardboard box
- D. On a metal table

Correct Answer: B

QUESTION 2

Which of the following is a valid electrical safety precaution when working on a computer or display with exposed, potentially energized parts?

- A. Use only metal screw drivers or fingers as needed to connect or disconnect cables.
- B. Always wear an ESD wrist or heel strap when working on plugged in systems.
- C. Be very careful handling the logic board or power supply while the computer is plugged in.
- D. Remove rings, watches, necklaces, metal-rimmed eyewear and other metallic articles before working on the computer.

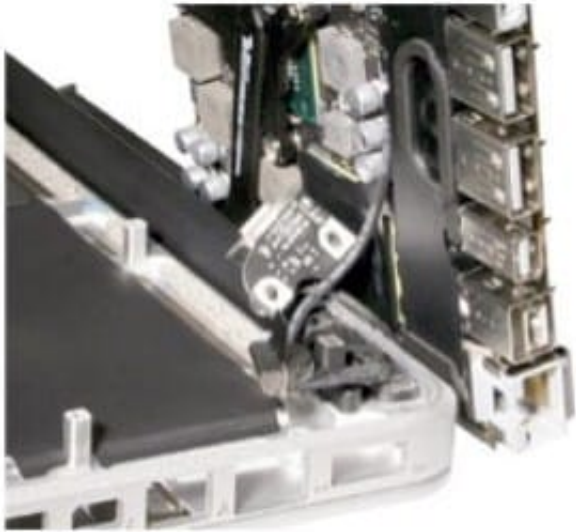
Correct Answer: D

Explanation:

Rings, watches, necklaces or any metallic wearables should be removed because metal will disturb the inner circuitry and the static charge will transfer to the sensitive parts of the computer. Reference: <http://mdex-nn.ru/uploads/imac12.pdf> (page 3, electrical safety precautions)

QUESTION 3

Examine the image.



Why is it necessary to position the logic board of a MacBook Pro (13-inch, Mid 2012) as depicted?

- A. To prevent damage to the microphone cable.
- B. To prevent damage to the left speaker.
- C. To prevent damage to the memory slots.
- D. To prevent damage to the topcase with keyboard connector.

Correct Answer: C

QUESTION 4

Which component for Apple Service Toolkit is designed to help troubleshoot issues with MagSafe and MagSafe 2 power adapters?

- A. NAD
- B. VST
- C. TPT
- D. CSD

Correct Answer: A

Explanation:

Apple Service Toolkit includes:*

AudioTest — plays a series of tones through each speaker and listens for those same tones via the microphone.

Diagnostic Gateway (DG) — software that runs on a dedicated Intel-based Mac using Mac OS X Server 10.6/10.7 and serves up tools to triage computers via NetBoot, recording test results as log files.

Mac Resource Inspector (MRI) — triage tool that provides a fast check of internal hardware components for all Intel- based computer systems.

Notebook Adapter Diagnostic (NAD) — triage tool that reports on the condition of Intel-based notebook power adapters.

Cooling System Diagnostic (CSD) – evaluates the thermal sensors, fans and heat sink in MacBook Pro (Early 2011) models and will either confirm correct operation or help diagnose a service issue.

Gateway Manager — software application used to remotely configure and manage the Diagnostic Gateway server as well as access logs created by diagnostic tools.

Test Patterns Tool (TPT) – identifies pixel anomalies in LCD panels in Apple Display, iMac, MacBook, MacBook Pro, and MacBook Air systems.

Server Bit Setter (SBS) – Repair tool used after replacing logic boards in late model Mac mini Servers or backplane boards in late model Mac Pro Servers.

Video System Test (VST) – is used to test video issues in specific MacBook Pro models.

Blank Board Serializer (BBS) – Allows technicians to set the system serial number on replacement Main Logic Board (MLB) service parts.

AST Keyboard (OS) – service tool for in-depth testing of keyboards.

AST Trackpad (OS) – service tool for in-depth testing of trackpads.

Storage Diagnostic (OS) – Repair tool for testing HDD or SSD modules.

Image Persistence Test (EFI) – triage tool for identifying image persistence anomalies on IPS displays

QUESTION 5

What color indicates that the Liquid Contact Indicators inside a MacBook Pro (13-inch, Mid 2012, have been triggered?

- A. Red
- B. Blue
- C. White
- D. Yellow

Correct Answer: A

Explanation: The indicators trigger only with direct contact to a liquid. The indicators will not be triggered by temperature and humidity that is within the product's environmental requirements described by Apple. A triggered indicator will turn red or pink...indicating that the module(s) to which the indicator is attached has been exposed to liquid.