

9A0-389^{Q&As}

Adobe Campaign Developer

Pass Adobe 9A0-389 Exam with 100% Guarantee

Free Download Real Questions & Answers **PDF** and **VCE** file from:

<https://www.leads4pass.com/9a0-389.html>

100% Passing Guarantee
100% Money Back Assurance

Following Questions and Answers are all new published by Adobe
Official Exam Center

-  **Instant Download** After Purchase
-  **100% Money Back** Guarantee
-  **365 Days** Free Update
-  **800,000+** Satisfied Customers



QUESTION 1

A website outside of Adobe Campaign needs to display the address of the recipient that is stored on Adobe Campaign. The customer wants to use SOAP webservices.

How would you implement that?

- A. Create a database link from the customer's database to the Adobe Campaign database.
- B. Create a JSP and access the sAddress field using a SQL query.
- C. Add a custom method to the schema and get the address using a queryDef.
- D. Create a webapp and add a database field mapped to the address.

Correct Answer: C

Reference: https://docs.campaign.adobe.com/doc/AC6.1/en/CFG_API_Web_service_calls.html

QUESTION 2

Which assessment should you use to hide a container in a form when gender is equal to a value of 1?

- A.
- ```
<container type="enabledGroup" visibleIf="@gender=1">
 ...
</container>
```
- B.
- ```
<container type="visibleGroup" expr="@gender=1">  
  ...  
</container>
```
- C.
- ```
<container type="visibleGroup" visibleIf="@gender=1">
 ...
</container>
```
- D.
- ```
<container type="containerGroup" visibleIf="@gender=1">  
  ...  
</container>
```

A. B. C. D.

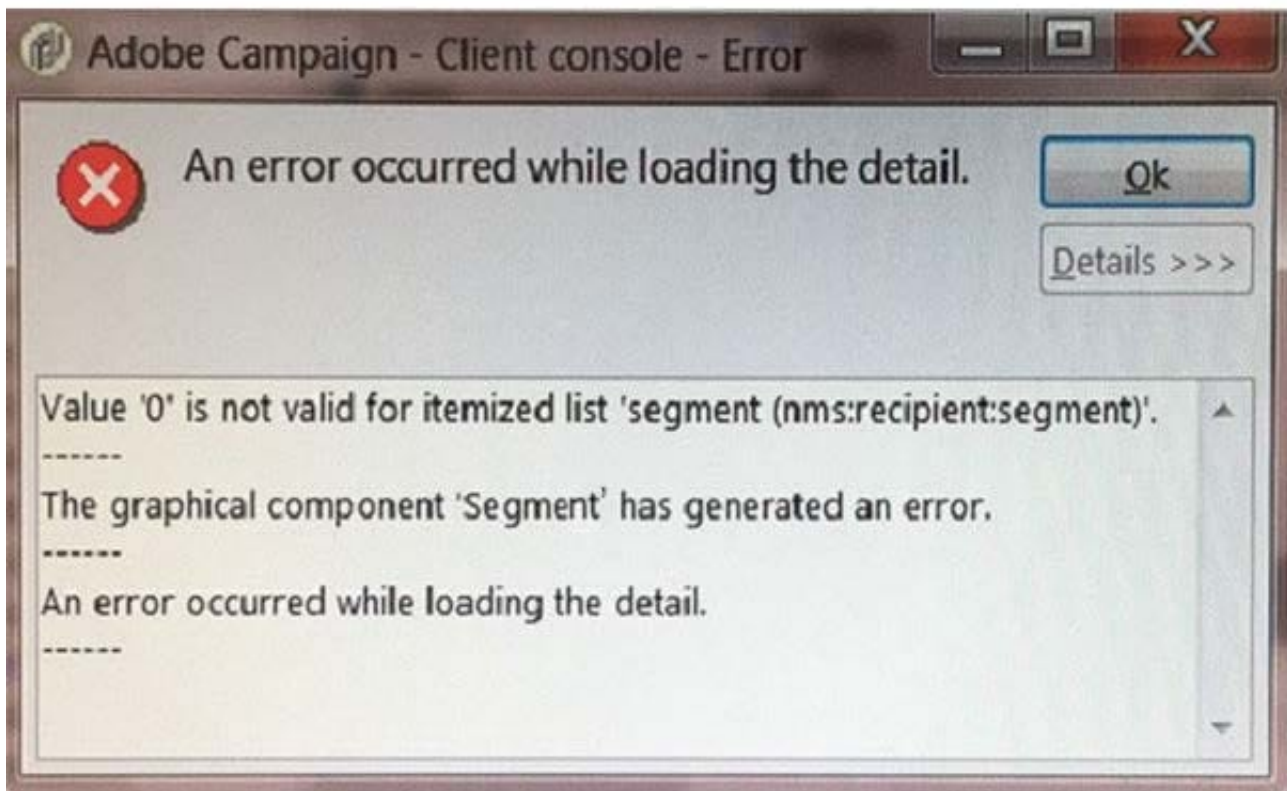
Correct Answer: D

QUESTION 3

A new attribute is added to the recipient schema. The error message shown below appears when opening the recipient.

What is the cause of the error?

```
<srcSchema name="recipient" namespace="demo">
  <enumeration basetype="short" default="bronze" name="segment">
    <value label="Bronze" name="bronze" value="1"/>
    <value label="Silver" name="silver" value="2"/>
    <value label="Gold" name="gold" value="3"/>
  </enumeration>
  <element desc="Recipient table (profiles" img="nms:recipient.png" label="Recipients"
    labelSingular="Recipient" name="recipient">
    <attribute enum="segment" name="segment" type="short"/>
  </element>
</srcSchema>
```



- A. The segment attribute is wrong.
- B. The navtree definition is incorrect.
- C. The value of the segment in the recipient record is incorrect.
- D. The form definition is incorrect.

Correct Answer: A

QUESTION 4

How would you setup a container in a form in order to make it visible for operators with the named right Managementgroup2?

- A.
- B. ...
- C. ...
- D.