

9A0-389^{Q&As}

Adobe Campaign Developer

Pass Adobe 9A0-389 Exam with 100% Guarantee

Free Download Real Questions & Answers **PDF** and **VCE** file from:

<https://www.leads4pass.com/9a0-389.html>

100% Passing Guarantee
100% Money Back Assurance

Following Questions and Answers are all new published by Adobe
Official Exam Center

-  **Instant Download** After Purchase
-  **100% Money Back** Guarantee
-  **365 Days** Free Update
-  **800,000+** Satisfied Customers



QUESTION 1

A website outside of Adobe Campaign needs to display the address of the recipient that is stored on Adobe Campaign. The customer wants to use SOAP webservice.

How would you implement that?

- A. Create a database link from the customer's database to the Adobe Campaign database.
- B. Create a JSP and access the sAddress field using a SQL query.
- C. Add a custom method to the schema and get the address using a queryDef.
- D. Create a webapp and add a database field mapped to the address.

Correct Answer: C

Reference: https://docs.campaign.adobe.com/doc/AC6.1/en/CFG_API_Web_service_calls.html

QUESTION 2

A user receives an Adobe Campaign email notification where they are informed that approval is needed for a certain delivery. The user logs into the Adobe Campaign console and wants to approve the mentioned delivery via the delivery dashboard but the approval link is NOT displayed there.

What would cause the approval link to NOT be shown?

- A. The delivery has already been approved by another operator.
- B. The user needs to belong to the "Delivery operators" group in order to see the link.
- C. Only the link provided in the email notification can be used to approve the delivery.
- D. The content of the delivery needs to be approved by another operator first.

Correct Answer: A

QUESTION 3

A store runs a satisfaction survey every year. The purpose of the survey is to measure the change in satisfaction over the years.

How should you store the survey responses?

- A. As attribute in the recipient schema.
- B. As an archived field in the survey.

- C. An attribute in the broad log schema.
- D. A database field in the survey.

Correct Answer: B

QUESTION 4

Which attribute is mandatory when inserting a LinkList into a form?

- A. An xpath attribute with a value set to the namespace and name of the foreign schema.
- B. A zoom element with a value set to true or false.
- C. An xpath attribute with a value set to the name of the link between the source and foreign schema.
- D. A type attribute with a value set to "link-list"
- E. An xpath attribute with a value set to the namespace of the foreign schema.

Correct Answer: D

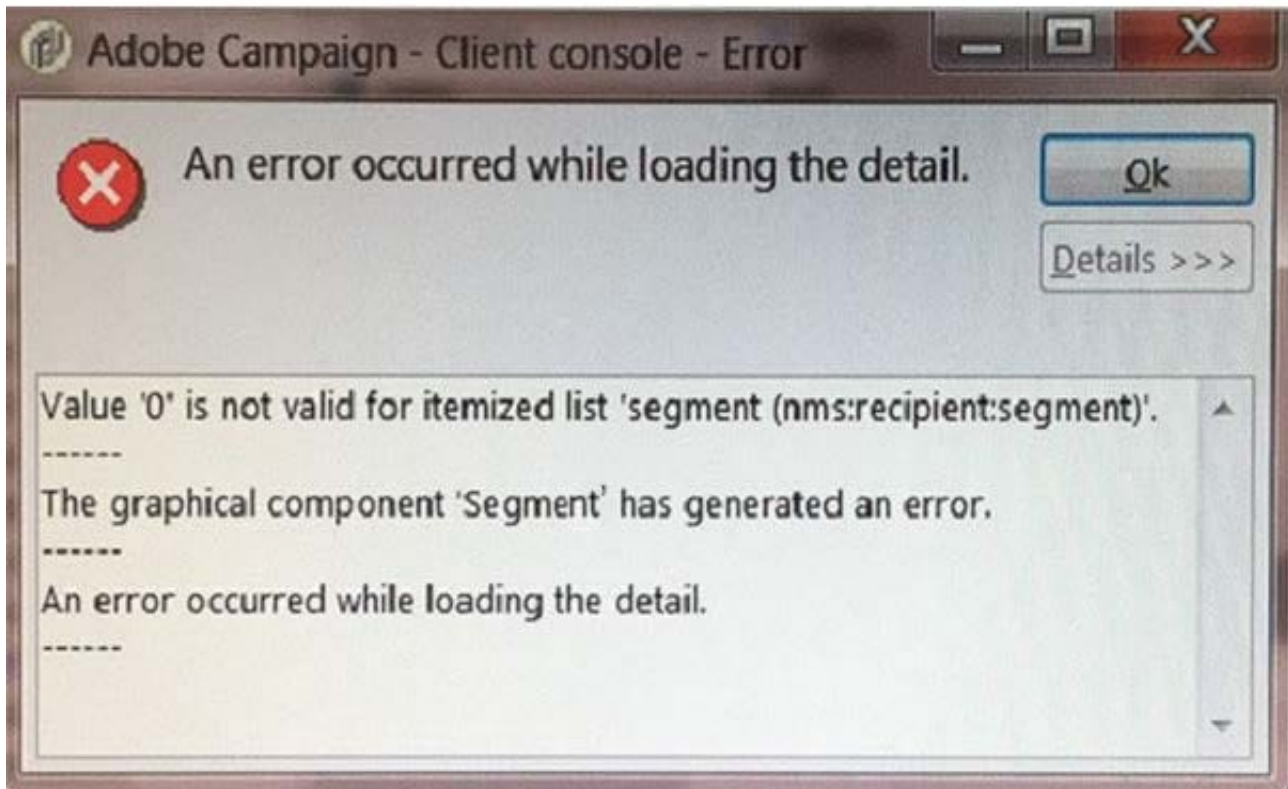
Reference: <https://docs.campaign.adobe.com/doc/archives/en/610/configuration-v6.1-en.pdf> (page 141)

QUESTION 5

A new attribute is added to the recipient schema. The error message shown below appears when opening the recipient.

What is the cause of the error?

```
<srcSchema name="recipient" namespace="demo">
  <enumeration basetype="short" default="bronze" name="segment">
    <value label="Bronze" name="bronze" value="1"/>
    <value label="Silver" name="silver" value="2"/>
    <value label="Gold" name="gold" value="3"/>
  </enumeration>
  <element desc="Recipient table (profiles" img="nms:recipient.png" label="Recipients"
    labelSingular="Recipient" name="recipient">
    <attribute enum="segment" name="segment" type="short"/>
  </element>
</srcSchema>
```



- A. The segment attribute is wrong.
- B. The navtree definition is incorrect.
- C. The value of the segment in the recipient record is incorrect.
- D. The form definition is incorrect.

Correct Answer: A

[9A0-389 PDF Dumps](#)

[9A0-389 VCE Dumps](#)

[9A0-389 Exam Questions](#)