

71300X^{Q&As}

Avaya Aura Communication Applications Integration Exam

Pass Avaya 71300X Exam with 100% Guarantee

Free Download Real Questions & Answers **PDF** and **VCE** file from:

<https://www.leads4pass.com/71300x.html>

100% Passing Guarantee
100% Money Back Assurance

Following Questions and Answers are all new published by Avaya
Official Exam Center

-  **Instant Download** After Purchase
-  **100% Money Back** Guarantee
-  **365 Days** Free Update
-  **800,000+** Satisfied Customers



QUESTION 1

Which statement about the SIP Entities to support Avaya Aura Presence Services is true?

- A. Only one SIP Entity is built of Type = "Presence Services", which uses the SM100 IP address of the Avaya Breeze™ node.
- B. Only one SIP Entity is built of Type = "Engagement Development Platform", which uses the SM100 IP Address of the Avaya Breeze™ node.
- C. Two SIP Entities are built to the same SM100 IP address of each node. One is of Type = "Engagement Development Platform", and the other is of Type = "Other".
- D. Two SIP Entities are built to the same SM100 IP address of each node. One is of Type = "Engagement Development Platform", and the other is of Type = "Presence Services".

Correct Answer: B

QUESTION 2

The Avaya WebRTC solution uses the web intensively to make media calls from a standard web browser in the internet, into internal and secure communication premises in the enterprise. Which statement about security between the Enterprise-edge and those standard Web browsers in the internet is true?

- A. A trust relationship based on certificates must be built to make WebRTC work.
- B. No trust relationship exists between enterprise edge security and web browsers; therefore, the security strategy is based on an Authorization Token instead.
- C. There must be a VPN connection between the Web Browser and the Enterprise-edge to build a WebRTC link.
- D. WebRTC only works within the Enterprise network. External Web Browsers must connect through an Avaya Session Border Controller for Enterprise (SBCE) via a SIP trunk.

Correct Answer: B

Validation of the authorization token. The WebRTC Snap-in will validate the authorization token created and encrypted by the web server. If the snap-in can decrypt the token and ensure that the time stamp is valid, it knows that the incoming HTTP request is valid. The time stamp will usually be short lived; on the order of 5- 10seconds to protect against replay attacks. References: Avaya WebRTC Snap-in Reference, Release 3.1 (May 2016), page 27 <https://downloads.avaya.com/css/P8/documents/101013939>

QUESTION 3

On Avaya Session Border Controller for Enterprise (SBCE), which statement about how to examine messages with Wireshark is true?

- A. You have to start and stop the .pcap file using command line.

- B. You can start and stop a Packet Capture in the EMS web GUI and then you can open the .pcap file with Wireshark.
- C. Wireshark runs directly on Avaya Session Border Controller for Enterprise (SBCE).
- D. They cannot be examined on this version.

Correct Answer: B

Viewing the Packet Capture with Wireshark.

0.

Start a Packet Capture in the EMS web GUI.

1.

After the capture completes, click the Capture tab.

2.

Double-click on the capture file name.

3.

The File Download window opens.

4.

Click Open.

The Wireshark application opens the trace.

Note: The Wireshark call tracing tool can be used on virtual desktop for vLabs. References: Avaya Aura

Session Border Controller Enterprise Implementation and Maintenance (2012), page 468

QUESTION 4

In which location is the AAMS URI `ce-msml@avaya.com` configured?

- A. Elements > Breeze > Configuration > HTTP Security and as a Regular Expression
- B. Elements > Breeze > Configuration > HTTP Security and as a Dial Pattern
- C. Home > Elements > Breeze > Configuration > Avaya Aura Media Server and as a Dial Pattern
- D. Home > Elements > Breeze > Configuration > Avaya Aura Media Server and as a Regular Expression

Correct Answer: D

Creating the Avaya Aura Media Server Routing Pattern Procedure

1.

On System Manager, click Elements > Routing > Routing Policies.

2.
Click New.
3.
Type a Name for the Routing Policy.
4.
From the SIP Entity as Destination field, click Select.
5.
Select the Avaya Aura
Media Server SIP Entity that you created.

Select the Local Host Name FQDN SIP Entity if you are using High Availability for the Avaya Aura Media
Server routing.
6.
Click Commit.
7.
Navigate to Home > Elements > Routing > Regular Expressions and click New.
8.
In the Pattern field, type ce-msml@.* This sip-domain value must match:

?The SIP domain that you entered in the Home>; Elements>; Routing>; Domains page. ?The default SIP
domain that you entered on the Avaya Breeze™ Cluster Administration page.
9.
Click Commit <https://downloads.avaya.com/css/P8/documents/101014426> References: Deploying Avaya Breeze,
Release 3.1, (September 2016), page 55

QUESTION 5

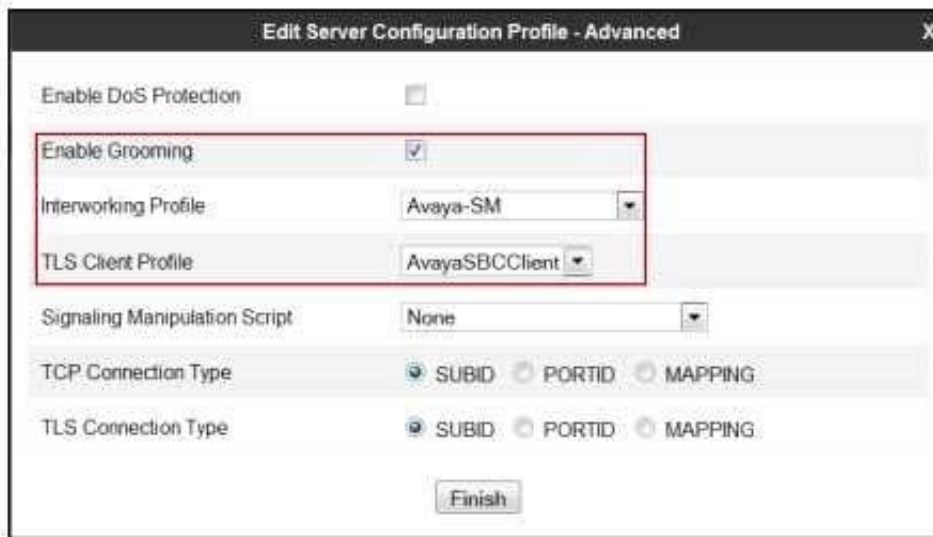
You want to multiplex all remote workers SIP messages to Avaya Aura Session Manager (SM) over the same TCP connection, rather than open a dedicated TCP connection for each user. Which feature needs to be enabled for Avaya Session Border Controller for Enterprise (SBCE)?

- A. the Enable Grooming feature in the Advanced tab of the Avaya Aura Session Manager (SM) Server Profile
- B. the Enable Shared Control feature in the Signaling Interface.
- C. the Stream Users Over Transport Link feature in the Signaling Interface

D. the Share Transport Link feature in the Advanced tab of the Avaya Aura Session Manager (SM) Server Profile

Correct Answer: A

Example:



References: Configuring Remote Workers with Avaya Session Border Controller for Enterprise Rel. 6.2, Avaya Aura Communication Manager Rel. 6.3 and Avaya Aura Session Managers Rel. 6.3 - Issue 1.0, page 36

<https://downloads.avaya.com/css/P8/documents/100183254>

[71300X PDF Dumps](#)

[71300X Practice Test](#)

[71300X Study Guide](#)