

7004.1^{Q&As}

Avaya Communication Server 1000 for Avaya Aura® Maintenance Exam

Pass Avaya 7004.1 Exam with 100% Guarantee

Free Download Real Questions & Answers **PDF** and **VCE** file from:

<https://www.leads4pass.com/7004-1.html>

100% Passing Guarantee
100% Money Back Assurance

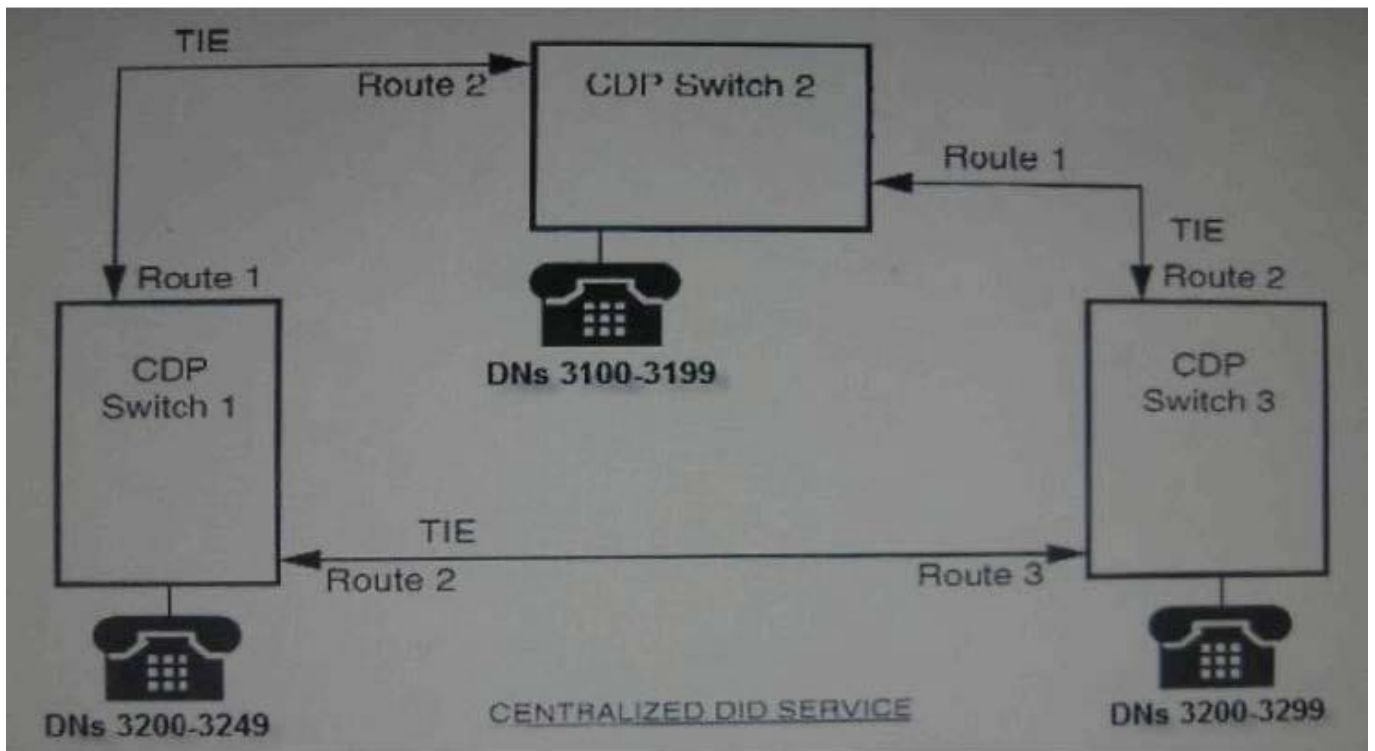
Following Questions and Answers are all new published by Avaya Official Exam Center

- ⚙️ **Instant Download** After Purchase
- ⚙️ **100% Money Back** Guarantee
- ⚙️ **365 Days** Free Update
- ⚙️ **800,000+** Satisfied Customers



QUESTION 1

Click the Exhibit button.



<u>CDP SWITCH #1</u>	<u>CDP SWITCH #2</u>	<u>CDP SWITCH #3</u>
DISTANT STEERING CODE = 31 USE ROUTE LIST 10	DISTANT STEERING CODE = 320 USE ROUTE LIST 5	DISTANT STEERING CODE = 31 USE ROUTE LIST 5
DISTANT STEERING CODE = 325 USE ROUTE LIST 2	DISTANT STEERING CODE = 321 USE ROUTE LIST 5	DISTANT STEERING CODE = 320 USE ROUTE LIST 6
DISTANT STEERING CODE = 326 USE ROUTE LIST 2	DISTANT STEERING CODE = 322 USE ROUTE LIST 5	DISTANT STEERING CODE = 321 USE ROUTE LIST 6
DISTANT STEERING CODE = 327 USE ROUTE LIST 2	DISTANT STEERING CODE = 323 USE ROUTE LIST 5	DISTANT STEERING CODE = 322 USE ROUTE LIST 6
DISTANT STEERING CODE = 328 USE ROUTE LIST 2	DISTANT STEERING CODE = 324 USE ROUTE LIST 5	DISTANT STEERING CODE = 323 USE ROUTE LIST 6
DISTANT STEERING CODE = 329 USE ROUTE LIST 2	DISTANT STEERING CODE = 325 USE ROUTE LIST 1	DISTANT STEERING CODE = 324 USE ROUTE LIST 6
ROUTE LIST 2 ENTRY 0 ROUTE 2	DISTANT STEERING CODE = 326 USE ROUTE LIST 1	ROUTE LIST 5 ENTRY 0 ROUTE 2
ROUTE LIST 10 ENTRY 0 ROUTE 1	DISTANT STEERING CODE = 327 USE ROUTE LIST 1	ROUTE LIST 6 ENTRY 0 ROUTE 3
	DISTANT STEERING CODE = 328 USE ROUTE LIST 1	
	DISTANT STEERING CODE = 329 USE ROUTE LIST 1	
	ROUTE LIST 1 ENTRY 0 ROUTE 1	
	ROUTE LIST 5 ENTRY 0 ROUTE 2	

Given a customer's Coordinating Dialing Plan shown in the exhibit, if a Station user at CDP Switch #2 dials 327-3249, which route list used and where will the call terminate?

- A. Route List 2 will be utilized and the call will terminate at CDP Switch #2
- B. Route List 10 will be utilized and the call will terminate at CDP Switch #3
- C. Route List 5 will be utilized and the call will terminate at CDP Switch #2
- D. Route List 1 will be utilized and the call will terminate at CDP Switch #3

Correct Answer: A

QUESTION 2

Click the Exhibit button.

0	Attendant
1	SPRE Code
21-27	Trunk Access Codes
3	Paging
4000-4999	Internal Directory Numbers
5019-5499	DID Directory Numbers
6020-6999	DID Directory Numbers
7	unassigned
8	unassigned
9	Access Code 2 (AC2)

Consider the customer's dialing plan shown in the exhibit. Which number used for the NARS AC1 access code?

- A. 6
- B. 8
- C. 9
- D. 31

Correct Answer: B

QUESTION 3

You are implementing IP Peer Networking in a Communication Server 1000 network. For correct call routing, the digits dialed by users must be manipulated to conform to the dialing requirements of the trunk. Which statement describes a property of digit manipulation?

- A. It is only available on branch offices
- B. Programming is shared across all network common trunks
- C. It has the ability to delete and insert leading digits
- D. It uses 64 tables for digit replacement

Correct Answer: C

QUESTION 4

Click the Exhibit button.

D	Attendant	TRAN	AC1	TRAN	AC2
1	SPRE Code				
20XX-29XX	Trunk Access Codes	NPA	1912	NXX	232
3XXX	DID DNs	RLI	4	RLI	1
4XXX	Non-DID DNs	SDRR	NONE	SDRR	NONE
5		ITEI	NONE	ITEI	NONE
6	AC2				
7		NPA	1914	NXX	234
8		RLI	3	RLI	0
9	AC1	SDRR	NONE	SDRR	NONE
		ITEI	NONE	ITEI	NONE
		NPA	1718	NXX	237
		RLI	4	RLI	1
		SDRR	NONE	SDRR	NONE
		ITEI	NONE	ITEI	NONE
		NPA	1717	NXX	345
		RLI	9	RLI	0
		DENY	39680	SDRR	NONE
		DENY	39681	ITEI	NONE
		DDD	5344000		
		NPA	1814	NXX	421
		RLI	4	RLI	1
		SDRR	NONE	SDRR	NONE
		ITEI	NONE	ITEI	NONE
		NPA	1609		
		RLI	2		
		DID	53330		
		ITEI	NONE		

Consider a customer's dialing plan and programming shown in the exhibit. Assuming all required Route List indexes have been programmed, why will the station call of 6-544- 3333 not complete?

- A. AC1 Access Code was not dialed.
- B. NXX 544 is not provisioned in the customer's database
- C. 3333 is Denied under the SDRR programming
- D. AC2 Access Code was not dialed

Correct Answer: B

QUESTION 5

For a situation where you use the CDP feature at a switch equipped with the MARS software package, which statements are correct? (Choose two)

- A. Use steering codes for CDP calls that are the same as the assigned NARS Access Codes.
- B. Use steering codes for CDP calls that are distinct from those assigned NARS Access Codes.
- C. You can integrate CDP numbers with the NARS Uniform Dialing Plan (UDP).

D. You cannot share Route Lists, Digit Manipulation tables and Time-of-Day schedule with NARS.

Correct Answer: BC

[Latest 7004.1 Dumps](#)

[7004.1 Practice Test](#)

[7004.1 Study Guide](#)