



# 70-981<sup>Q&As</sup>

Recertification for MCSE: Private Cloud

## Pass Microsoft 70-981 Exam with 100% Guarantee

Free Download Real Questions & Answers **PDF** and **VCE** file from:

<https://www.lead4pass.com/70-981.html>

100% Passing Guarantee  
100% Money Back Assurance

Following Questions and Answers are all new published by Microsoft  
Official Exam Center

-  **Instant Download** After Purchase
-  **100% Money Back** Guarantee
-  **365 Days** Free Update
-  **800,000+** Satisfied Customers





### QUESTION 1

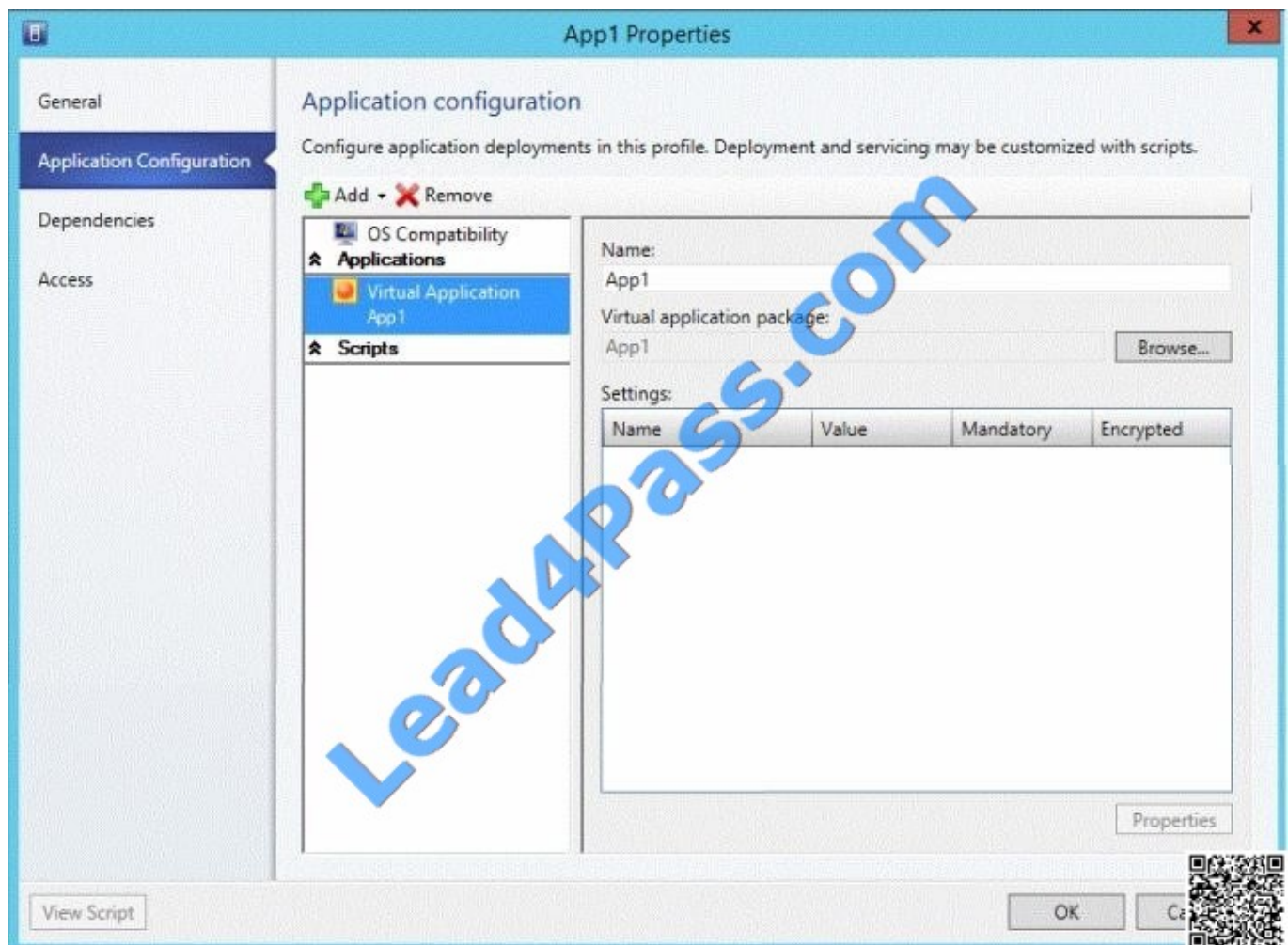
Your company deploys System Center 2012 R2 Virtual Machine Manager (VMM).

You plan to perform a new server deployment. The new server deployment will include a custom application named App1.

You use Server Application Virtualization (Server App-V) to virtualize App1. You create an application profile.

You create a service deployment to deploy the App1 by using a Windows Server 2012 R2 template.

After deploying the service, you discover that App1 was not installed. You view the application profile as shown in the exhibit. (Click the Exhibit button.)



You need to ensure that App1 is installed when you deploy the service.

What should you add to the application profile?

- A. A Script Application that adds the Server App-V Agent
- B. A Script Application that adds the WebDeploy Agent



- C. A Script to Application that installs the Server App-V Agent
- D. A Script to Application that installs the WebDeploy Agent

Correct Answer: A

You use Server Application Virtualization (Server App-V) to virtualize App1" (App-V application package, not a Web Deploy application package)

Please see the following page for more information on why I think the answer is A. Here is the specific quote from that page- "In VMM in System Center 2012 R2, if you kept the Compatibility option (described in the previous step) set to the default option, General, you can add an application that will be deployed by running a script, such as a script based on a Setup.exe installation program. To add such an application, select Script Application."

<http://technet.microsoft.com/en-us/library/hh427291.aspx> Also, in the PetShop example, the application you are deploying is specifically mentioned to be a web deploy application

6. Configure Applications: The application profile for the web tier will contain:

1.

Pre-install application profile script to install the Web Deploy client

2.

The web deploy application package

3.

Post-install application deployment script to configure the web deploy application <http://technet.microsoft.com/en-us/library/gg703293.aspx> - How to Install the Server Application Virtualization Agent Use one of the following ways to install the Server App-V Agent. After you install the Agent, you can review the SAVSetupChainerLog.txtfile for information about the installation process. Copy the Server App-V Agent installation files (Agentsetup.exe) to the computer that is running Windows Server where you want to install the Server App-V Agent. You must also use the correct version of the installation file that matches the architecture of the computer that you are installing on, x86 or x64.

To start the Microsoft Server Application Virtualization Agent setup wizard, double-click AgentSetup.exe.

On the Welcome page, click Next.

Script to Application is from Orchestrator:

[http://blogs.technet.com/b/neilp/archive/2013/11/14/scvmm\\_5f00\\_servietemplate\\_5f00\\_sco\\_rch.aspx](http://blogs.technet.com/b/neilp/archive/2013/11/14/scvmm_5f00_servietemplate_5f00_sco_rch.aspx)

Script Application is from VMM

<http://technet.microsoft.com/en-us/library/hh427291.aspx> And the exhibit shows a VMM screenshot (at least that is what I think it is). So I think it should be A

---

## QUESTION 2

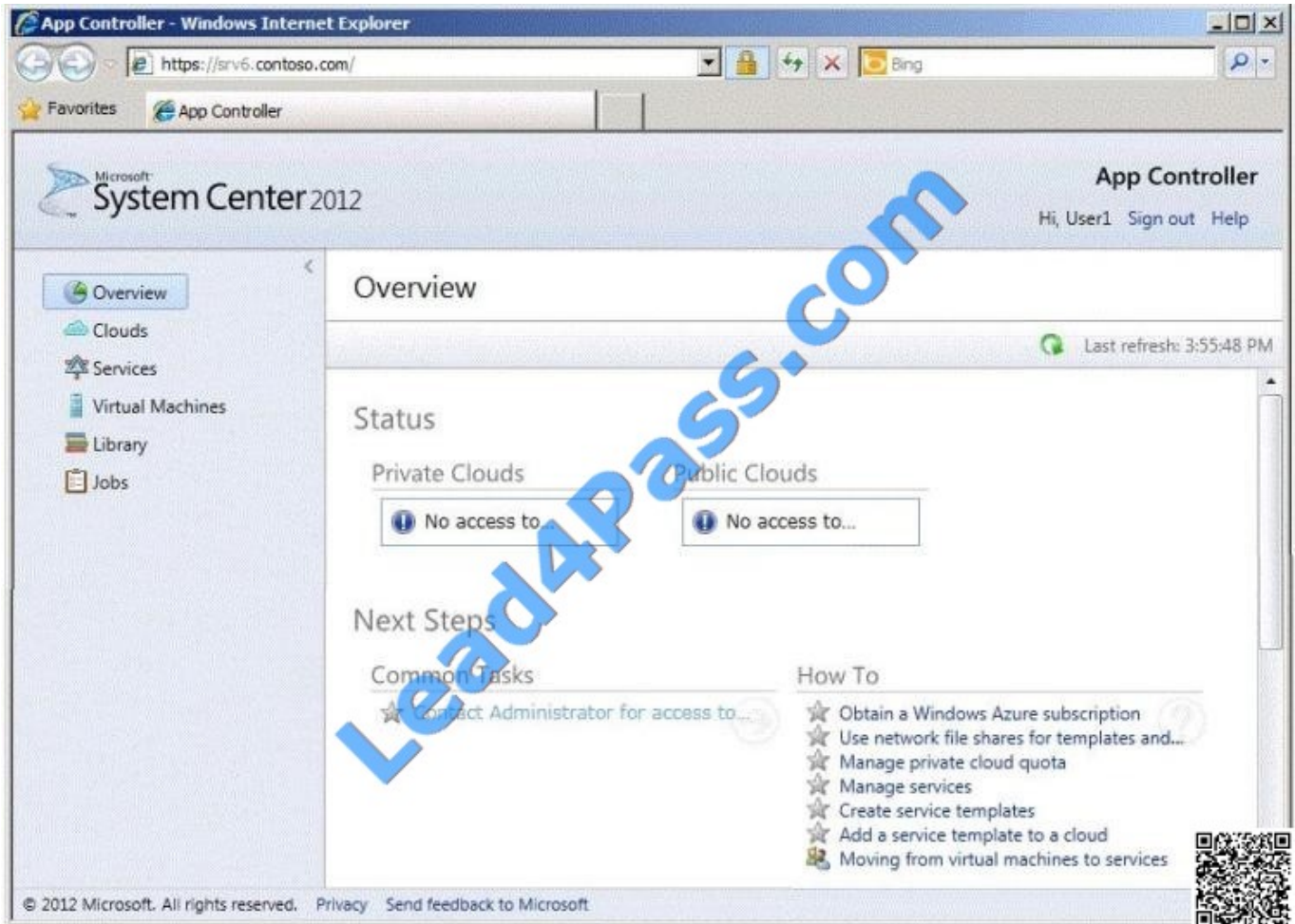
Your network contains servers that have System Center 2012 Virtual Machine Manager (VMM) installed and servers that have System Center 2012 App Controller installed.



You create a private cloud named Cloud1.

You add a VMM connection in App Controller.

You verify that you can connect to Cloud1 from the App Controller portal. A user named User1 fails to connect to Cloud1 from the App Controller portal as shown in the exhibit. (Click the Exhibit button.)



You need to ensure that User1 can connect to Cloud1 from the App Controller portal. What should you do?

- A. From the App Controller portal, modify the properties of the VMM connection.
- B. From the App Controller portal, create a User Role.
- C. From the VMM Administrator Console, modify the properties of Cloud1.
- D. From the VMM Administrator Console, create a User Role.

Correct Answer: D

You can create user roles in System Center 2012 ?Virtual Machine Manager (VMM) to define the objects that users can manage and the management operations that users can perform. Reference: Creating User Roles in VMM URL: <http://technet.microsoft.com/en-us/library/gg696971.aspx>



### QUESTION 3

Your company has three datacenters located in New York, Los Angeles and Paris.

You deploy a System Center 2012 Virtual Machine Manager (VMM) infrastructure. The VMM infrastructure contains 2,000 virtual machines deployed on 200 Hyper-V hosts.

The network contains a server named DPMI that has System Center 2012 Data Protection Manager (DPM) installed.

You need to recommend a solution for the infrastructure to meet the following requirements:

Automatically backup and restore virtual machines by using workflows. Automatically backup and restore system states by using workflows.

What should you include in the recommendation? (Each correct answer presents part of the solution. Choose two.)

- A. Deploy System Center 2012 Orchestrator.
- B. Install the Integration Pack for System Center Virtual Machine Manager (VMM).
- C. Install the Integration Pack for System Center Data Protection Manager (DPM).
- D. Deploy System Center 2012 Operations Manager.
- E. Deploy System Center 2012 Service Manager.

Correct Answer: AC

<http://technet.microsoft.com/en-us/library/hh420337> <http://technet.microsoft.com/en-us/library/hh830726.aspx>

---

### QUESTION 4

You need to recommend a design for the Operations Manager 2012 infrastructure.

What should you include in the recommendation? (More than one answer choice may achieve the goal. Select the BEST answer.)

- A.

Correct Answer: D

---

### QUESTION 5

You plan to deploy a service named Service1. When you deploy Service1, you plan to deploy several SQL scripts to a virtual machine named VM1 by using an Application Profile. You need that ensure that a user named User1 is prompted for the name of the SQL instance during the deployment of Service1.

Which value should you add to the Application Profile

- A. \$SQLServerInstanceName\$



B. #SQLServerInstanceName#

C. @SQLServerInstanceName@

D. %SQLServerInstanceName%

Correct Answer: C

<https://blogs.technet.com/b/scvmm/archive/2011/09/27/vmm-2012-sql-server-profile.aspx?Redirected=true>

[70-981 PDF Dumps](#)

[70-981 Practice Test](#)

[70-981 Braindumps](#)



To Read the [Whole Q&As](#), please purchase the [Complete Version](#) from [Our website](#).

## Try our product !

100% Guaranteed Success

100% Money Back Guarantee

365 Days Free Update

Instant Download After Purchase

24x7 Customer Support

Average 99.9% Success Rate

More than 800,000 Satisfied Customers Worldwide

Multi-Platform capabilities - [Windows](#), [Mac](#), [Android](#), [iPhone](#), [iPod](#), [iPad](#), [Kindle](#)

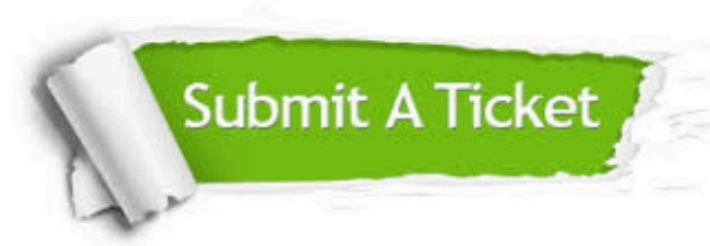
We provide exam PDF and VCE of Cisco, Microsoft, IBM, CompTIA, Oracle and other IT Certifications. You can view Vendor list of All Certification Exams offered:

<https://www.lead4pass.com/allproducts>

## Need Help

Please provide as much detail as possible so we can best assist you.

To update a previously submitted ticket:



 <p><b>One Year Free Update</b> Free update is available within One Year after your purchase. After One Year, you will get 50% discounts for updating. And we are proud to boast a 24/7 efficient Customer Support system via Email.</p>	 <p><b>Money Back Guarantee</b> To ensure that you are spending on quality products, we provide 100% money back guarantee for 30 days from the date of purchase.</p>	 <p><b>Security &amp; Privacy</b> We respect customer privacy. We use McAfee's security service to provide you with utmost security for your personal information &amp; peace of mind.</p>
---	---	--

Any charges made through this site will appear as Global Simulators Limited.

All trademarks are the property of their respective owners.

Copyright © lead4pass, All Rights Reserved.