



70-767^{Q&As}

Implementing a Data Warehouse using SQL

Pass Microsoft 70-767 Exam with 100% Guarantee

Free Download Real Questions & Answers **PDF** and **VCE** file from:

<https://www.lead4pass.com/70-767.html>

100% Passing Guarantee
100% Money Back Assurance

Following Questions and Answers are all new published by Microsoft
Official Exam Center

-  **Instant Download** After Purchase
-  **100% Money Back** Guarantee
-  **365 Days** Free Update
-  **800,000+** Satisfied Customers





QUESTION 1

You are designing a SQL Server Integration Services (SSIS) data flow to load sales transactions from a source system into a data warehouse hosted on Windows Azure SQL Database. One of the columns in the data source is named ProductCode.

Some of the data to be loaded will reference products that need special processing logic in the data flow.

You need to enable separate processing streams for a subset of rows based on the source product code. Which data flow transformation should you use?

- A. Source Assistant
- B. Destination Assistant
- C. Audit
- D. Script Component

Correct Answer: D

Explanation: Script Component Transformation:

The transformation that uses script to extract, transform, or load data.

Note:

* SQL Server Integration Services provides three different types of data flow components:

sources, transformations, and destinations. Sources extract data from data stores such as tables and views in relational databases, files, and Analysis Services databases. Transformations modify, summarize, and clean data. Destinations

load data into data stores or create in-memory datasets.

Incorrect:

Not A, Not B: No Data Transforms called Source Assistant or Destination Assistant Not C: Not related to auditing

QUESTION 2

You are developing a SQL Server Integration Services (SSIS) project by using the Project Deployment Model.

The project is deployed to a single SSIS catalog, and transfers data to and from multiple databases hosted on SQL Server.

The project must be configured to be able to export data to and from five different production servers that run SQL Server 2016. Each target server requires different values for connection strings and parameters in the SSIS project.

You need to meet the requirements by using the least amount of administrative effort.

What should you do?

- A. For each target server, create separate registry entry configurations. Select the registry entry at package execution



time.

- B. For each target server, create separate Environments in the SSIS catalog of the host SQL Server SSIS instance. Select the appropriate Environment at package execution time.
- C. Create one SSIS catalog Environment. Change the values of each Environment variable at package execution time.
- D. For each target server, create a separate XML configuration file. Select the XML configuration file at package execution time.

Correct Answer: B

QUESTION 3

You are designing a data warehouse with two fact tables. The first table contains sales per month and the second table contains orders per day.

Referential integrity must be enforced declaratively.

You need to design a solution that can join a single time dimension to both fact tables.

What should you do?

- A. Join the two fact tables.
- B. Merge the fact tables.
- C. Create a time dimension that can join to both fact tables at their respective granularity.
- D. Create a surrogate key for the time dimension.

Correct Answer: C

Explanation: References:

<http://msdn.microsoft.com/en-us/library/ms174537.aspx> <http://technet.microsoft.com/en-us/library/ms174832.aspx>
<http://msdn.microsoft.com/en-us/library/ms174884.aspx> <http://decipherinfosys.wordpress.com/2007/02/01/surrogate-keys-vs-natural-keys-for-primary-key/>

<http://www.agiledata.org/essays/keys.html>

<http://www.databasejournal.com/features/mssql/article.php/3922066/SQL-Server-Natural-Key-Verses-Surrogate-Key.htm>

<http://www.jamesserra.com/archive/2016/01/surrogate-keys/>

QUESTION 4

You are preparing to install SQL Server 2016 Master Data Services (MDS).

You need to ensure that the database requirements are met.

What should you install?



- A. Microsoft SharePoint Server 2010 Standard Edition SP1
- B. Microsoft SharePoint Server 2010 Enterprise Edition SP1
- C. SQL Server 2016 Data Center (64-bit) x64 on the database server
- D. SQL Server 2016 Enterprise (64-bit) x64 on the database server

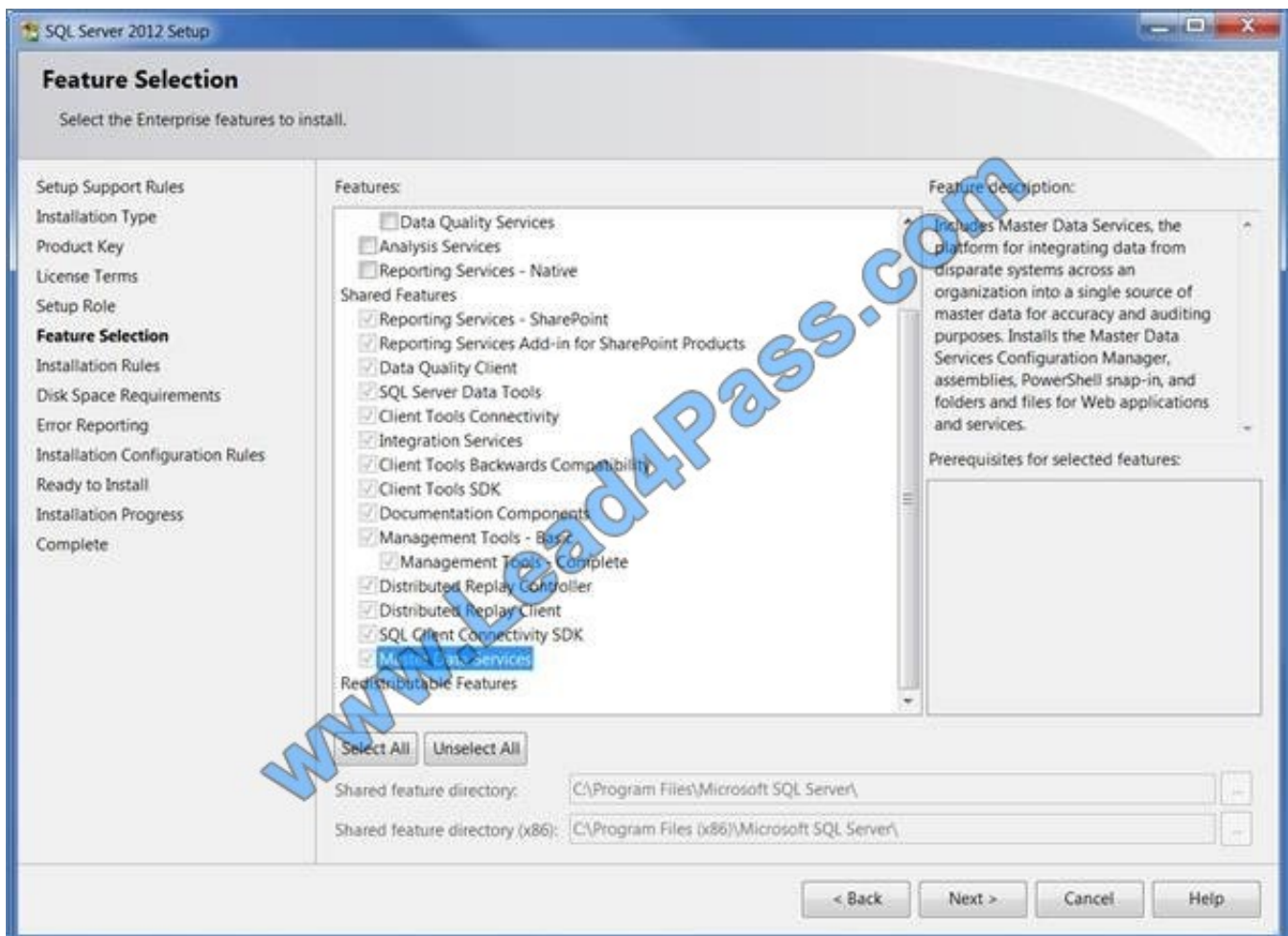
Correct Answer: D

*

Master Data Services is a new feature introduced in SQL Server 2008 R2 and further enhanced in SQL Server 2016.

*

SQL Server 2016 Enterprise features include Master Data Services:



Note:

* Microsoft SQL Server Master Data Services is a Master Data Management (MDM) product from Microsoft, which will ship as a part of the Microsoft SQL Server database. Originally code-named Bulldog, Master Data Services is the rebranding of the Stratature MDM product titled +EDM, which Microsoft acquired in June 2007. Master Data Services is architecturally similar to +EDM, with increased integration with other Microsoft applications as well as some new features. Master Data Services first shipped with Microsoft SQL Server 2008 R2.



QUESTION 5

You develop a SQL Server Integration Services (SSIS) package that imports SQL Azure data into a data warehouse every night.

The SQL Azure data contains many misspellings and variations of abbreviations. To import the data, a developer used the Fuzzy Lookup transformation to choose the closest- matching string from a reference table of allowed values. The number of rows in the reference table is very large.

If no acceptable match is found, the Fuzzy Lookup transformation passes a null value.

The current setting for the Fuzzy Lookup similarity threshold is 0.50.

Many values are incorrectly matched.

You need to ensure that more accurate matches are made by the Fuzzy Lookup transformation without degrading performance.

What should you do?

- A. Change the Exhaustive property to True.
- B. Change the similarity threshold to 0.55.
- C. Change the similarity threshold to 0.40.
- D. Increase the maximum number of matches per lookup.

Correct Answer: B

<http://msdn.microsoft.com/en-us/library/ms137786.aspx>

[70-767 Practice Test](#)

[70-767 Exam Questions](#)

[70-767 Braindumps](#)



To Read the [Whole Q&As](#), please purchase the [Complete Version](#) from [Our website](#).

Try our product !

100% Guaranteed Success

100% Money Back Guarantee

365 Days Free Update

Instant Download After Purchase

24x7 Customer Support

Average 99.9% Success Rate

More than 800,000 Satisfied Customers Worldwide

Multi-Platform capabilities - [Windows](#), [Mac](#), [Android](#), [iPhone](#), [iPod](#), [iPad](#), [Kindle](#)

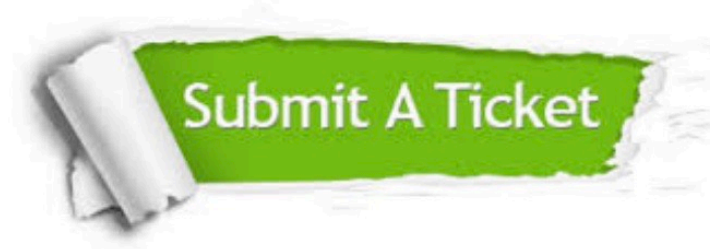
We provide exam PDF and VCE of Cisco, Microsoft, IBM, CompTIA, Oracle and other IT Certifications. You can view Vendor list of All Certification Exams offered:

<https://www.lead4pass.com/allproducts>

Need Help

Please provide as much detail as possible so we can best assist you.

To update a previously submitted ticket:



 <p>One Year Free Update Free update is available within One Year after your purchase. After One Year, you will get 50% discounts for updating. And we are proud to boast a 24/7 efficient Customer Support system via Email.</p>	 <p>Money Back Guarantee To ensure that you are spending on quality products, we provide 100% money back guarantee for 30 days from the date of purchase.</p>	 <p>Security & Privacy We respect customer privacy. We use McAfee's security service to provide you with utmost security for your personal information & peace of mind.</p>
---	---	--

Any charges made through this site will appear as Global Simulators Limited.

All trademarks are the property of their respective owners.

Copyright © lead4pass, All Rights Reserved.