



70-744^{Q&As}

Securing Windows Server 2016

Pass Microsoft 70-744 Exam with 100% Guarantee

Free Download Real Questions & Answers **PDF** and **VCE** file from:

<https://www.lead4pass.com/70-744.html>

100% Passing Guarantee
100% Money Back Assurance

Following Questions and Answers are all new published by Microsoft
Official Exam Center

-  **Instant Download** After Purchase
-  **100% Money Back** Guarantee
-  **365 Days** Free Update
-  **800,000+** Satisfied Customers





QUESTION 1

Note: This question is part of a series of questions that use the same scenario. For your convenience, the scenario is repeated in each question. Each question presents a different goal and answer choices, but the text of the scenario is exactly the same in each question in this series.

Start of repeated scenario

Your network contains an Active Directory domain named contoso.com. The functional level of the forest and the domain is Windows Server 2008 R2.

The domain contains the servers configured as shown in the following table.

Server name	Configuration
Nano1	Nano Server
Nano2	Nano Server
Server2	File server that has a shared folder named DATA
Server3	DNS server that has a DNSSEC-signed zone named adatum.com
Server4	Hyper-V host
Server1	Application server

All servers run Windows Server 2016. All client computers run Windows 10.

You have an organizational unit (OU) named Marketing that contains the computers in the marketing department. You have an OU named Finance that contains the computers in the finance department. You have an OU named AppServers

that contains application servers. A Group Policy object (GPO) named GP1 is linked to the Marketing OU. A GPO named GP2 is linked to the AppServers OU.

You install Windows Defender on Nano1.

End of repeated scenario

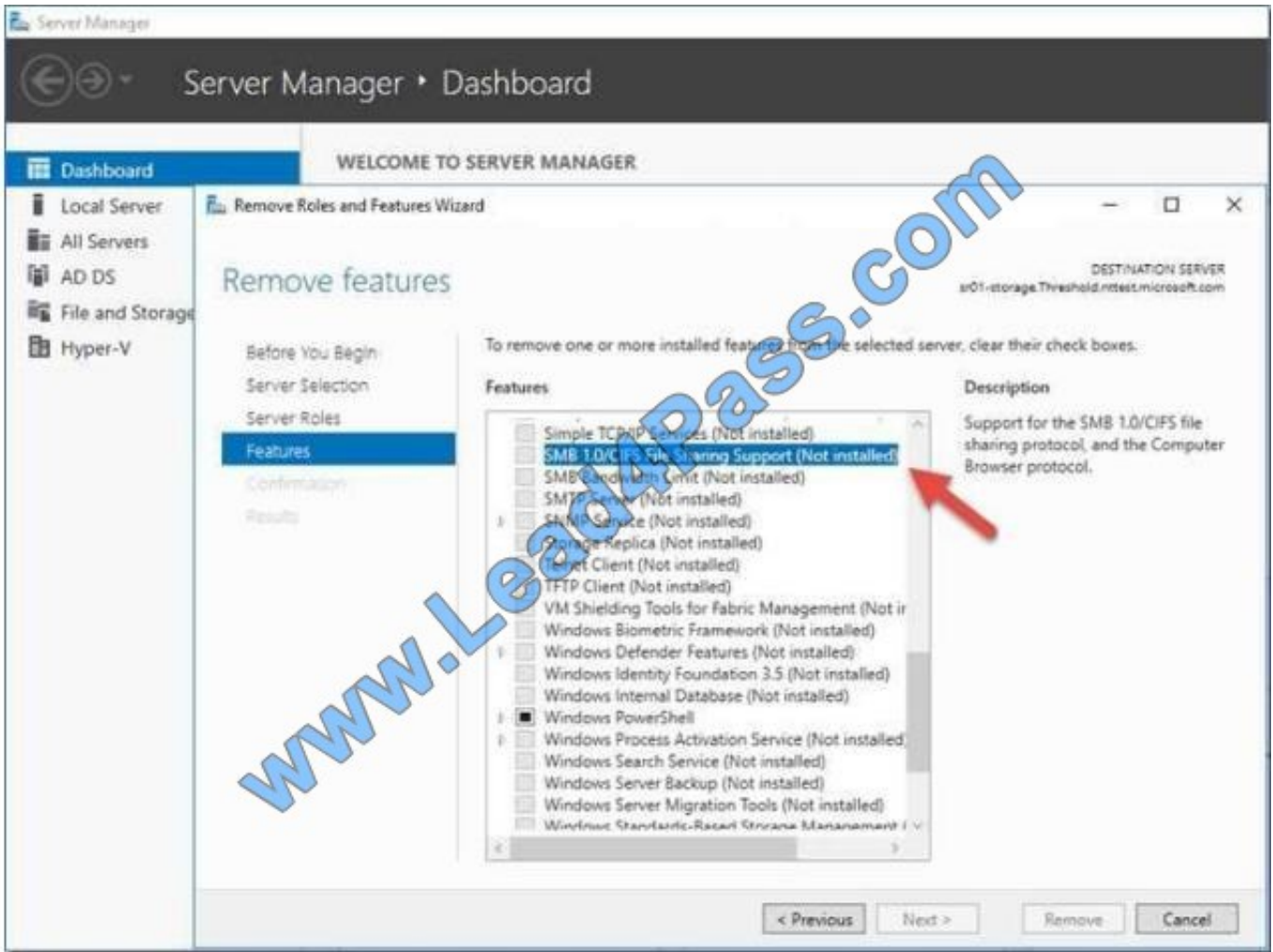
You need to disable SMB 1.0 on Server2.

What should you do?

- A. From File Server Resource Manager, create a classification rule.
- B. From the properties of each network adapter on Server2, modify the bindings.
- C. From Windows PowerShell, run the Set -SmbClientConfiguration cmdlet.
- D. From Server Manager, remove a Windows feature.

Correct Answer: D

<https://support.microsoft.com/en-us/help/2696547/how-to-enable-and-disable-smbv1-smbv2-and-smbv3-in-windows-and-windows>



QUESTION 2

Your network contains an Active Directory domain.

The domain contains two organizational units (OUs) named ProdOU and TestOU.

All production servers are in ProdOU. All test servers are in TestOU. A server named Server1 is in TestOU.

You have a Windows Server Update Services (WSUS) server named WSUS1 that runs Windows Server 2016.

All servers receive updates from WSUS1.

WSUS is configured to approve updates for computers in the Test computer group automatically.

Manual approval is required for updates to the computers in the Production computer group.

You move Server1 to ProdOU, and you discover that updates continue to be approved and installed automatically on Server1.

You need to ensure that all the servers in ProdOU only receive updates that are approved manually.

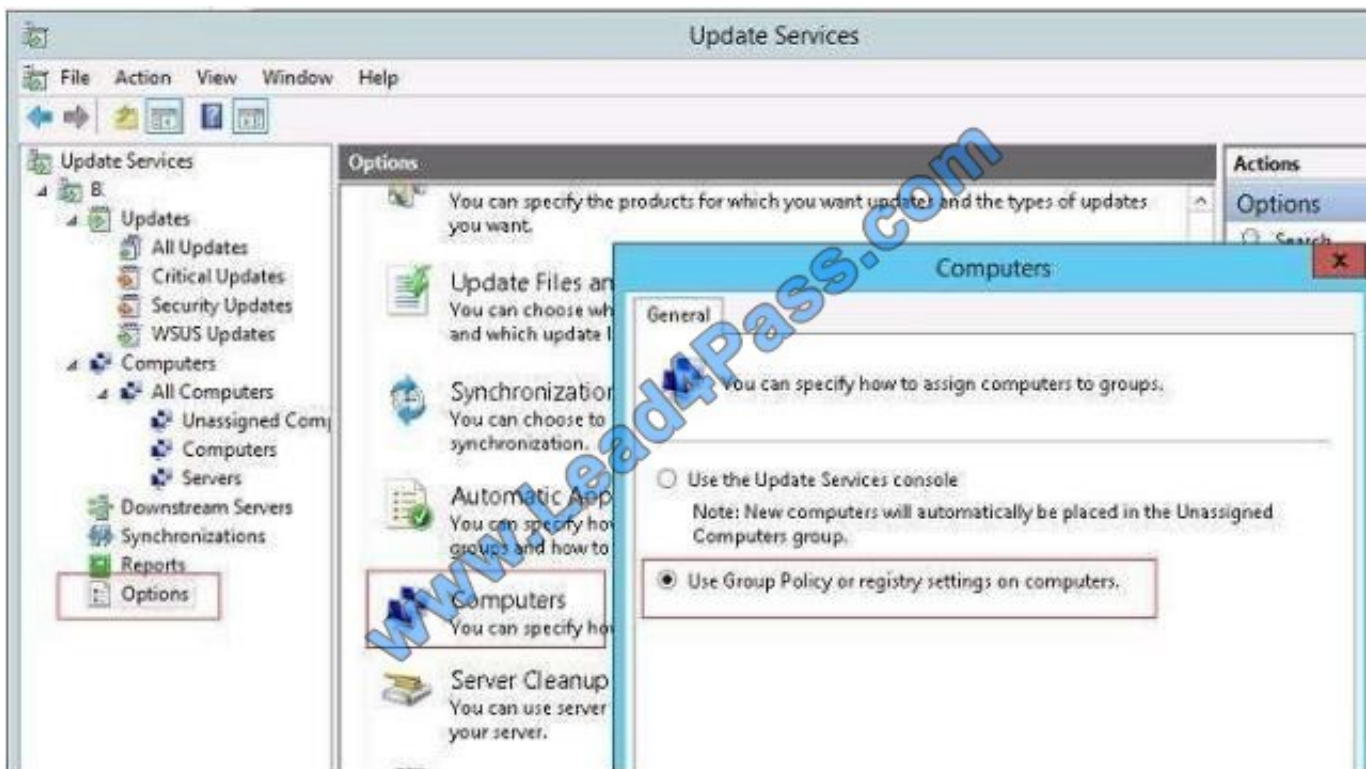
What should you do?



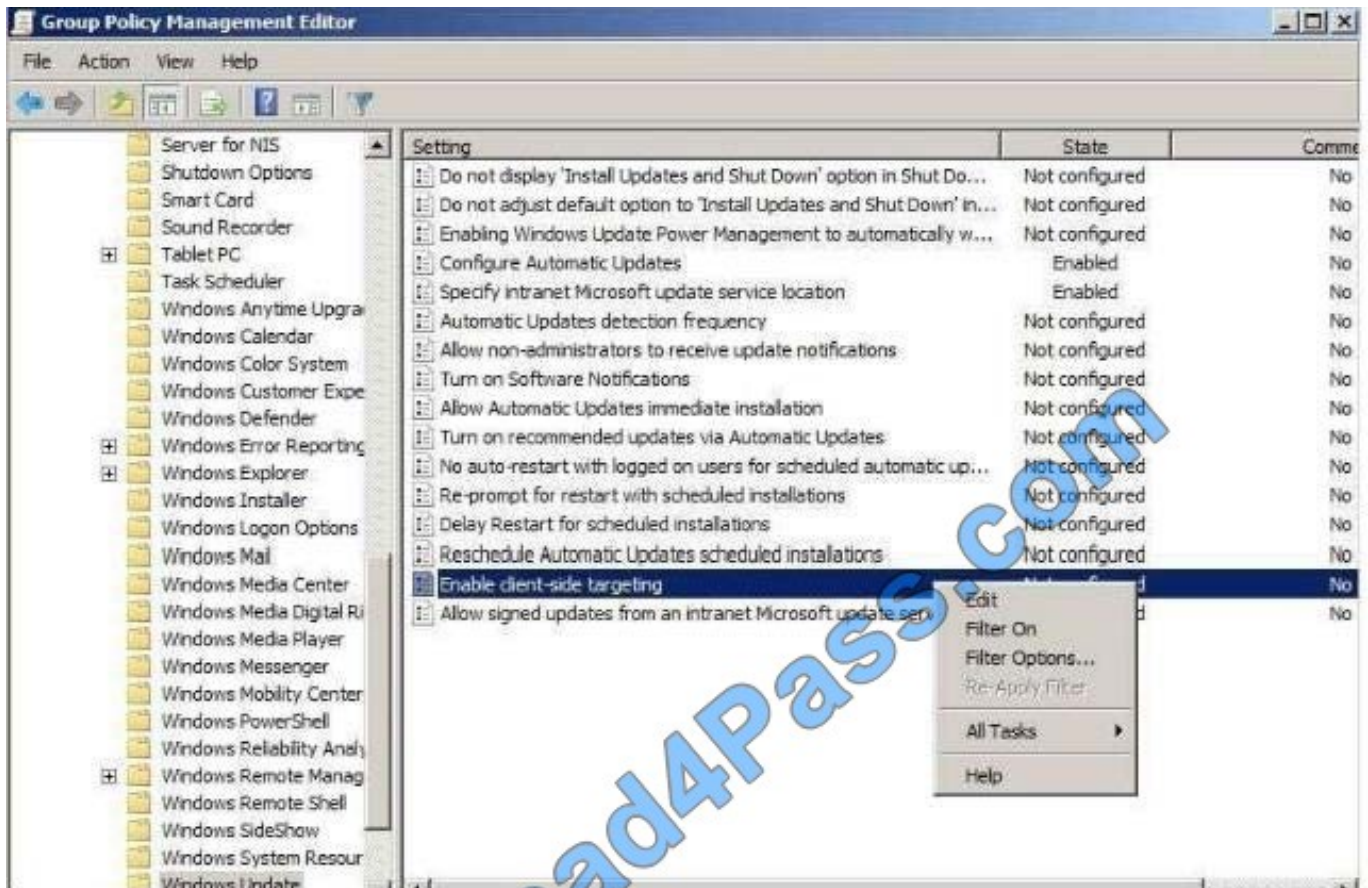
- A. Turn off auto-restart for updates during active hours by using Group Policy objects (GPOs).
- B. Configure client-side targeting by using Group Policy objects (GPOs).
- C. Create computer groups by using the Update Services console.
- D. Run wuauclt.exe /detectnow on each server after the server is moved to a different OU.

Correct Answer: B

Updates in WSUS are approved against "Computer Group", not AD OUs. For this example, to prevent Server1 to install automatically approved updates, you have to remove Server1 from "Test" computer group and add Server1 into "Production" computer group in WSUS console, manually or use the WSUS GPO Client-Side Targeting feature. <https://technet.microsoft.com/en-us/library/cc720450%28v=ws.10%29.aspx?f=255&MSPPError=-2147217396> With client-side targeting, you enable client-computers to add themselves to the computer groups you create in the WSUS console. You can enable client-side targeting through Group Policy (in an Active Directory network environment) or by editing registry entries (in a non-Active Directory network environment) for the client computers. When the WSUS client computers connect to the WSUS server, they will add themselves into the correct computer group. Client-side targeting is an excellent option if you have many client computers and want to automate the process of assigning them to computer groups. First, configure WSUS to allow Client Site Targeting.



Secondly, configure GPO to affect "ProdOU", so that Server1 add itself to "Production" computer group. <https://prajwaldesai.com/how-to-configure-client-side-targeting-in-wsus>



QUESTION 3

Your network contains an Active Directory domain named contoso.com. The domain contains five servers. All servers run Windows Server 2016.



A new security policy states that you must modify the infrastructure to meet the following requirements:

- *Limit the rights of administrators.
- *Minimize the attack surface of the forest
- *Support Multi-Factor authentication for administrators.

You need to recommend a solution that meets the new security policy requirements.

What should you recommend deploying?

- A. an administrative forest
- B. domain isolation
- C. an administrative domain in contoso.com
- D. the Local Administrator Password Solution (LAPS)

Correct Answer: A

You have to "-Minimize the attack surface of the forest", then you must create another forest for administrators. https://docs.microsoft.com/en-us/windows-server/identity/securing-privileged-access/securing-privilegedaccess-reference-material#ESAE_BM This section contains an approach for an administrative forest based on the Enhanced Security Administrative Environment (ESAE) reference architecture deployed by Microsoft's cybersecurity professional services teams to protect customers against cybersecurity attacks. Dedicated administrative forests allow organizations to host administrative accounts, workstations, and groups in an environment that has stronger security controls than the production environment.

QUESTION 4

Note: This question is part of a series of questions that present the same scenario. Each question in the series contains a unique solution that might meet the stated goals. Some question sets might have more than one correct solution, while

others might not have a correct solution.

After you answer a question in this section, you will NOT be able to return to it. As a result, these questions will not appear in the review screen.

Your network contains an Active Directory domain named contoso.com. The domain contains multiple Hyper-V hosts.

You need to deploy several critical line-to-business applications to the network to meet the following requirements:

- *The resources of the applications must be isolated (from the physical host).
- *Each application must be prevented from accessing the resources of the other applications.
- *The configurations of the applications must be accessible only from the operating system that hosts the application.

Solution: You deploy a separate Hyper-V container for each application.

Does this meet the goal?



A. Yes

B. No

Correct Answer: A

References:

<https://docs.microsoft.com/en-us/virtualization/windowscontainers/about/>

-The resources of the applications must be isolated from the physical host (ACHIEVED)-Each application must be prevented from accessing the resources of the other applications. (ACHIEVED)-The configurations of the applications must be

accessible only from the operating system that hosts the application. (ACHIEVED)

QUESTION 5

Your network contains an Active Directory domain named contoso.com. The domain contains multiple servers that run either Windows Server 2012 or Windows Server 2012 R2.

You plan to implement Just Enough Administration (JEA) to manage all of the servers.

What should you install on each server to ensure that the servers can be managed by using JEA?

- A. Remote Server Administration Tools (RSAT)
- B. Microsoft .NET Framework 3.5 Service Pack 1 (SP1)
- C. Management Odata Internet Information Services (IIS) Extension
- D. Windows Management Framework 5.0

Correct Answer: D

<https://msdn.microsoft.com/en-us/library/dn896648.aspx>Get JEAThe current release of JEA is available on the following platforms:Windows ServerWindows Server 2016 Technical Preview 5 and higherWindows Server 2012 R2, Windows Server 2012, and Windows Server 2008 R2* with WindowsManagement Framework 5.0 installed

[70-744 PDF Dumps](#)

[70-744 VCE Dumps](#)

[70-744 Study Guide](#)



To Read the [Whole Q&As](#), please purchase the [Complete Version](#) from [Our website](#).

Try our product !

100% Guaranteed Success

100% Money Back Guarantee

365 Days Free Update

Instant Download After Purchase

24x7 Customer Support

Average 99.9% Success Rate

More than 800,000 Satisfied Customers Worldwide

Multi-Platform capabilities - [Windows](#), [Mac](#), [Android](#), [iPhone](#), [iPod](#), [iPad](#), [Kindle](#)

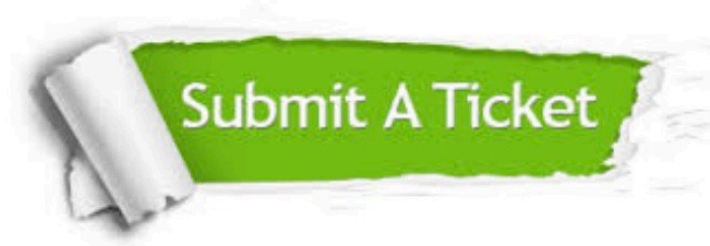
We provide exam PDF and VCE of Cisco, Microsoft, IBM, CompTIA, Oracle and other IT Certifications. You can view Vendor list of All Certification Exams offered:

<https://www.lead4pass.com/allproducts>

Need Help

Please provide as much detail as possible so we can best assist you.

To update a previously submitted ticket:



 <p>One Year Free Update Free update is available within One Year after your purchase. After One Year, you will get 50% discounts for updating. And we are proud to boast a 24/7 efficient Customer Support system via Email.</p>	 <p>Money Back Guarantee To ensure that you are spending on quality products, we provide 100% money back guarantee for 30 days from the date of purchase.</p>	 <p>Security & Privacy We respect customer privacy. We use McAfee's security service to provide you with utmost security for your personal information & peace of mind.</p>
---	---	--

Any charges made through this site will appear as Global Simulators Limited.

All trademarks are the property of their respective owners.

Copyright © lead4pass, All Rights Reserved.