



70-743^{Q&As}

Upgrading Your Skills to MCSA Windows Server 2016

Pass Microsoft 70-743 Exam with 100% Guarantee

Free Download Real Questions & Answers **PDF** and **VCE** file from:

<https://www.lead4pass.com/70-743.html>

100% Passing Guarantee
100% Money Back Assurance

Following Questions and Answers are all new published by Microsoft
Official Exam Center

-  **Instant Download** After Purchase
-  **100% Money Back** Guarantee
-  **365 Days** Free Update
-  **800,000+** Satisfied Customers





QUESTION 1

Your network contains an Active Directory forest named contoso.com. The forest contains a member server named Server1 that runs Windows Server 2016. Server1 is located in the perimeter network.

You install the Active Directory Federation Services server role on Server1. You create an Active Directory Federation Services (AD FS) farm by using a certificate that has a subject name of sts.contoso.com.

You need to enable certificate authentication from the Internet on Server1.

Which two inbound TCP ports should you open on the firewall? Each correct answer presents part of the solution.

- A. 389
- B. 443
- C. 3389
- D. 8531
- E. 49443

Correct Answer: BE

Configuring the following network services appropriately is critical for successful deployment of AD FS in your organization: Configuring Corporate Firewall

*

Both the firewall located between the Web Application Proxy and the federation server farm and the firewall between the clients and the Web Application Proxy must have TCP port 443 enabled inbound.

*

In addition, if client user certificate authentication (clientTLS authentication using X509 user certificates) is required, AD FS in Windows Server 2012 R2 requires that TCP port 49443 be enabled inbound on the firewall between the clients and the Web Application Proxy. This is not required on the firewall between the Web Application Proxy and the federation servers).

References: [https://technet.microsoft.com/en-us/library/dn554247\(v=ws.11\).aspx](https://technet.microsoft.com/en-us/library/dn554247(v=ws.11).aspx)

QUESTION 2

You have a server named Server1 that runs Windows Server 2016. The Docker daemon runs on Server1. You need to ensure that members of a security group named Docker Administrators can administer Docker. What should you do?

- A. Edit the Configuration.json file.
- B. Modify the Security settings of Docker.exe.
- C. Run the Set-Service cmdlet.
- D. Run the sc config command.



Correct Answer: D

The preferred method for configuring the Docker Engine on Windows is using a configuration file. The configuration file can be found at `\\C:\ProgramData\Docker\config\daemon.json\`. If this file does not already exist, it can be created.

Note: The Docker Engine can also be configured by modifying the Docker service using the `sc config` command.

References: <https://docs.microsoft.com/en-us/virtualization/windowscontainers/manage-docker/configure-docker-daemon>

QUESTION 3

You have a Hyper-V host named Server1 that runs Windows Server 2016.

Server1 has a virtual machine named VM1. VM1 is configured to run the Docker daemon.

On VM1, you have a container network that uses transparent mode.

You need to ensure that containers that run on VM1 can obtain IP addresses from DHCP.

What should you do?

- A. On VM1, run `docker network connect`.
- B. On Server1, run `docker network connect`.
- C. On VM1, run `Get-VMNetworkAdapter -VMName VM1 | Set-VMNetworkAdapter -MacAddressSpoofing On`.
- D. On Server1, run `Get-VMNetworkAdapter -VMName VM1 | Set-VMNetworkAdapter -MacAddressSpoofing On`.

Correct Answer: D

If the container host is virtualized, and you wish to use DHCP for IP assignment, you must enable `MacAddressSpoofing`.

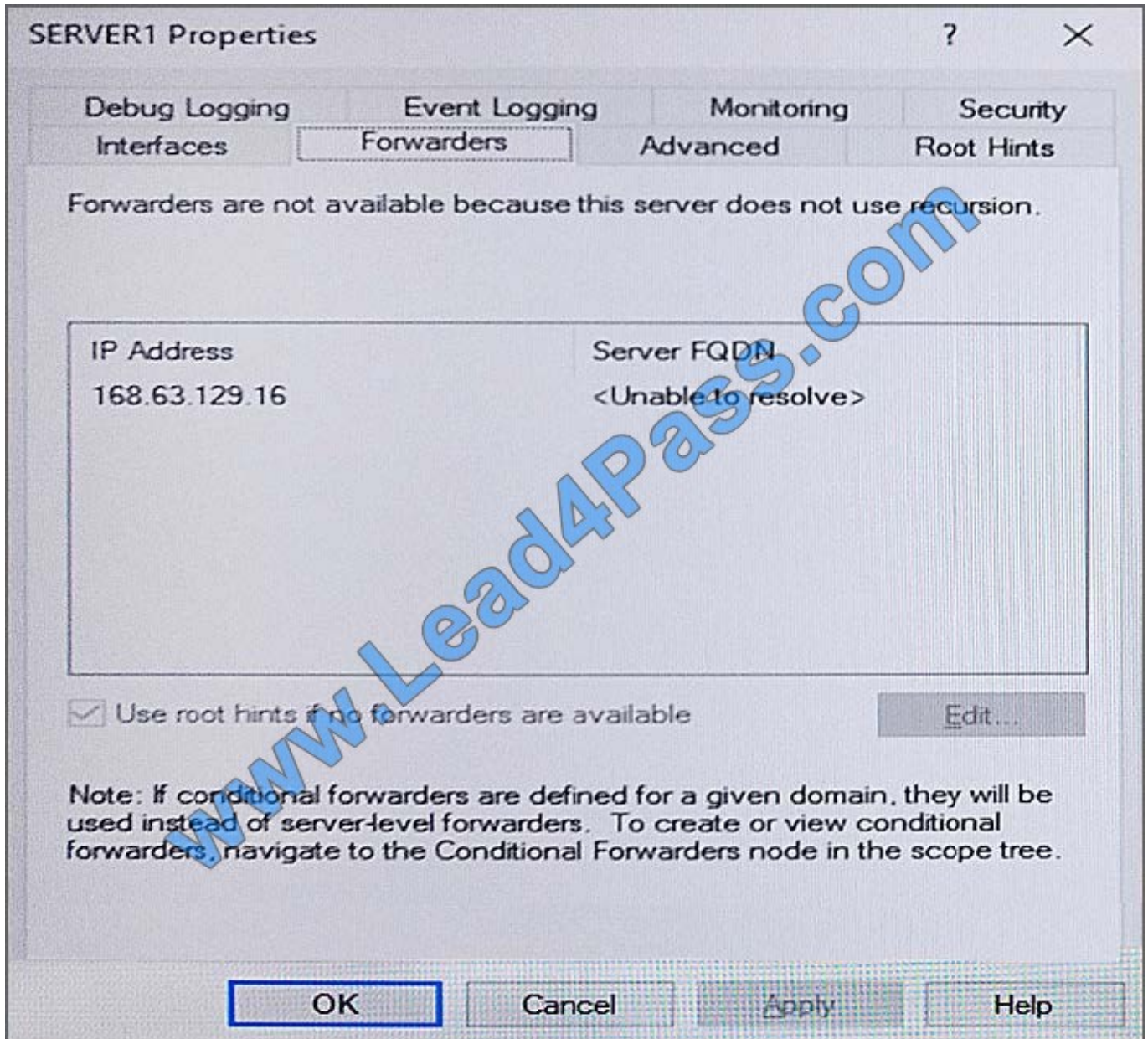
```
PS C:\> Get-VMNetworkAdapter -VMName ContainerHostVM | Set-VMNetworkAdapter -MacAddressSpoofing On
```

The command needs to be run on the Hyper-V host.

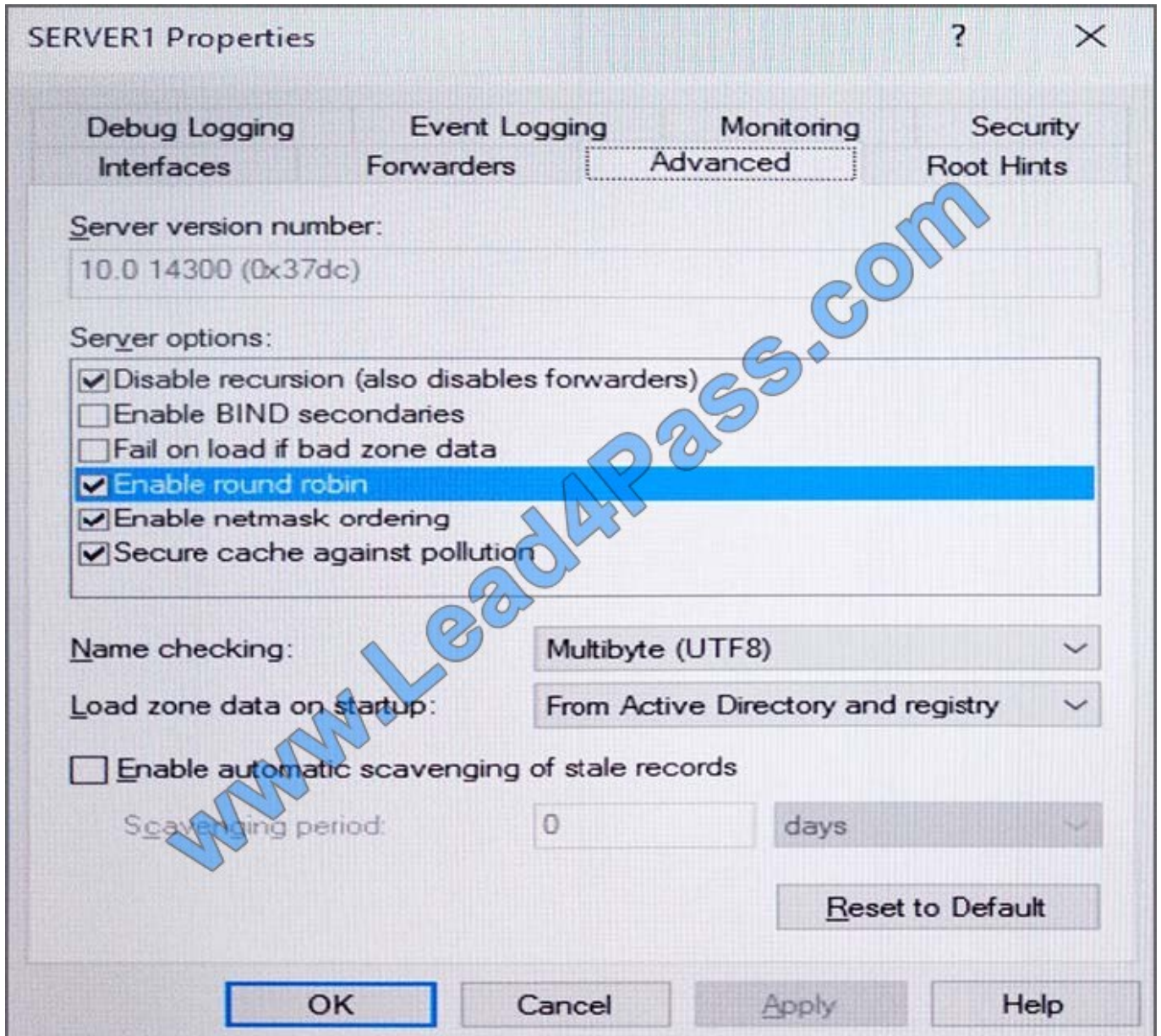
QUESTION 4

You have a DNS server named Server1.

The forwarders are configured as shown in the Forwarders exhibit. (Click the Exhibit button.)



The Advanced Settings are configured as shown in the Advanced exhibit. (Click the Exhibit button.)



The Root Hints are configured as shown in the Root Hints exhibit. (Click the Exhibit button.)



SERVER1 Properties

Debug Logging Event Logging Monitoring Security
Interfaces Forwarders Advanced **Root Hints**

Root hints resolve queries for zones that do not exist on the local DNS server. They are only used if forwarders are not configured or fail to respond.

Name servers:

Server Fully Qualified Domain Name (FQDN)	IP Address
a.root-servers.net.	[2001:503:ba3e::2...]
b.root-servers.net.	[2001:500:84:b]
f.root-servers.net.	[2001:500:2:f]
i.root-servers.net.	[2001:7e::53]
l.root-servers.net.	[2001:500:9f::42]
m.root-servers.net.	[2001:dc3::35]

Buttons: Add, Edit..., Remove, Copy from Server, OK, Cancel, Apply, Help

Server1 does not contain any DNS zones.

For each of the following statements, select Yes if the statement is true. Otherwise, select No.

Hot Area:



Answer Area

Statements	Yes	No
Server1 can resolve the names of hosts that are located on the Internet.	<input type="radio"/>	<input type="radio"/>
From Server1 Properties, if you perform a test from the Monitoring tab, the recursive test will pass.	<input type="radio"/>	<input type="radio"/>
Server1 is configured as a root DNS server.	<input type="radio"/>	<input type="radio"/>

Correct Answer:

Answer Area

Statements	Yes	No
Server1 can resolve the names of hosts that are located on the Internet.	<input type="radio"/>	<input checked="" type="radio"/>
From Server1 Properties, if you perform a test from the Monitoring tab, the recursive test will pass.	<input type="radio"/>	<input checked="" type="radio"/>
Server1 is configured as a root DNS server.	<input type="radio"/>	<input checked="" type="radio"/>

Recursion is disabled so internet hosts cannot be resolved.

The recursive test fails because recursion is disabled.

Server1 is not configured as a root server. The forwarders list would be greyed out if it was.

QUESTION 5

You have a Windows Server 2016 failover cluster that has a cluster network named ClusterNetwork1.

You need to ensure that ClusterNetwork1 is enabled for cluster communication only.

What command should you run? To answer, select the appropriate options in the answer area.

Hot Area:



Answer Area

(

▼
Get-ClusterNetwork
Get-ClusterResource
Set-ClusterParameter
Update-ClusterIPResource

 ClusterNetwork1) .

▼
ID
Metric
Role
State

 =1

Correct Answer:

Answer Area

(

▼
Get-ClusterNetwork
Get-ClusterResource
Set-ClusterParameter
Update-ClusterIPResource

 ClusterNetwork1) .

▼
ID
Metric
Role
State

 =1

Box 1: Get-ClusterNetwork

Cluster network roles can be changed using PowerShell command, Get-ClusterNetwork.

For example:

(Get-ClusterNetwork "Cluster Network 1"). Role =1

Box 2: Role

Cluster Network Roles:

Cluster networks are automatically created for all logical subnets connected to all nodes in the Cluster. Each network adapter card connected to a common subnet will be listed in Failover Cluster Manager. Cluster networks can be configured

for different uses.

Three roles:

*

Disabled for Cluster Communication (value 0)

*

Enabled for Cluster Communication only (value 1)



*

Enabled for client and cluster communication (value 3)

References:

<https://blogs.technet.microsoft.com/askcore/2014/02/19/configuring-windows-failover-cluster-networks/>

[Latest 70-743 Dumps](#)

[70-743 Practice Test](#)

[70-743 Exam Questions](#)



To Read the [Whole Q&As](#), please purchase the [Complete Version](#) from [Our website](#).

Try our product !

100% Guaranteed Success

100% Money Back Guarantee

365 Days Free Update

Instant Download After Purchase

24x7 Customer Support

Average 99.9% Success Rate

More than 800,000 Satisfied Customers Worldwide

Multi-Platform capabilities - [Windows](#), [Mac](#), [Android](#), [iPhone](#), [iPod](#), [iPad](#), [Kindle](#)

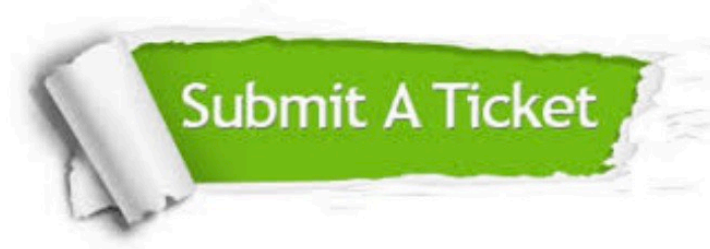
We provide exam PDF and VCE of Cisco, Microsoft, IBM, CompTIA, Oracle and other IT Certifications. You can view Vendor list of All Certification Exams offered:

<https://www.lead4pass.com/allproducts>

Need Help

Please provide as much detail as possible so we can best assist you.

To update a previously submitted ticket:



 <p>One Year Free Update Free update is available within One Year after your purchase. After One Year, you will get 50% discounts for updating. And we are proud to boast a 24/7 efficient Customer Support system via Email.</p>	 <p>Money Back Guarantee To ensure that you are spending on quality products, we provide 100% money back guarantee for 30 days from the date of purchase.</p>	 <p>Security & Privacy We respect customer privacy. We use McAfee's security service to provide you with utmost security for your personal information & peace of mind.</p>
---------------------------------------------------------------------------------------------------------------------------------------------------------------------------------------------------------------------------------------------------------------------------------------------------------------------------------	-------------------------------------------------------------------------------------------------------------------------------------------------------------------------------------------------------------------------------------------------------------	------------------------------------------------------------------------------------------------------------------------------------------------------------------------------------------------------------------------------------------------------------------------------------

Any charges made through this site will appear as Global Simulators Limited.

All trademarks are the property of their respective owners.

Copyright © lead4pass, All Rights Reserved.