



# 70-743<sup>Q&As</sup>

Upgrading Your Skills to MCSA Windows Server 2016

## Pass Microsoft 70-743 Exam with 100% Guarantee

Free Download Real Questions & Answers **PDF** and **VCE** file from:

<https://www.lead4pass.com/70-743.html>

100% Passing Guarantee  
100% Money Back Assurance

Following Questions and Answers are all new published by Microsoft  
Official Exam Center

-  **Instant Download** After Purchase
-  **100% Money Back** Guarantee
-  **365 Days** Free Update
-  **800,000+** Satisfied Customers





### QUESTION 1

#### HOTSPOT

You have a server named Server1 that runs Windows Servers 2016. Server1 has a storage array that contains multiple storage enclosures. The storage supports enclosure awareness.

You need to implement Storage Spaces on Server1. Storage Spaces must remain available if two enclosures fail. The solution must minimize the number of enclosures required and must provide the fastest possible write performance.

Which configurations should you use? To answer, select the appropriate options in the answer area.

NOTE: Each correct selection is worth one point.

Hot Area:

### Answer Area

Resiliency type: 

▼
Dual parity
Single parity
Three-way mirror
Two-way mirror

Number of enclosures: 

▼
3
4
5
6

Correct Answer:



## Answer Area

Resiliency type: 

Dual parity
Single parity
Three-way mirror
Two-way mirror

Number of enclosures: 

3
4
5
6

Explanation:

Both dual parity and three-way mirror provide resilience against two enclosures failing but dual parity provides better storage efficiency.

### QUESTION 2

Your network contains an Active Directory domain named contoso.com. The domain contains a server named Server1 that runs Windows Server 2016.

Server1 has IP Address Management (IPAM) installed. IPAM is configured to use the Group Policy based provisioning method. The prefix for the IPAM Group Policy objects (GPOs) is IP.

From Group Policy Management, you manually rename the IPAM GPOs to have a prefix of IPAM.

You need to modify the GPO prefix used by IPAM.

What should you do?

- A. Click Configure server discovery in Server Manager.
- B. Run the Set-IpamConfiguration cmdlet.
- C. Run the Invoke-IpamGpoProvisioning cmdlet.
- D. Click Provision the IPAM server in Server Manager.

Correct Answer: B

The Set-IpamConfiguration cmdlet modifies the configuration for the computer that runs the IPAM server.



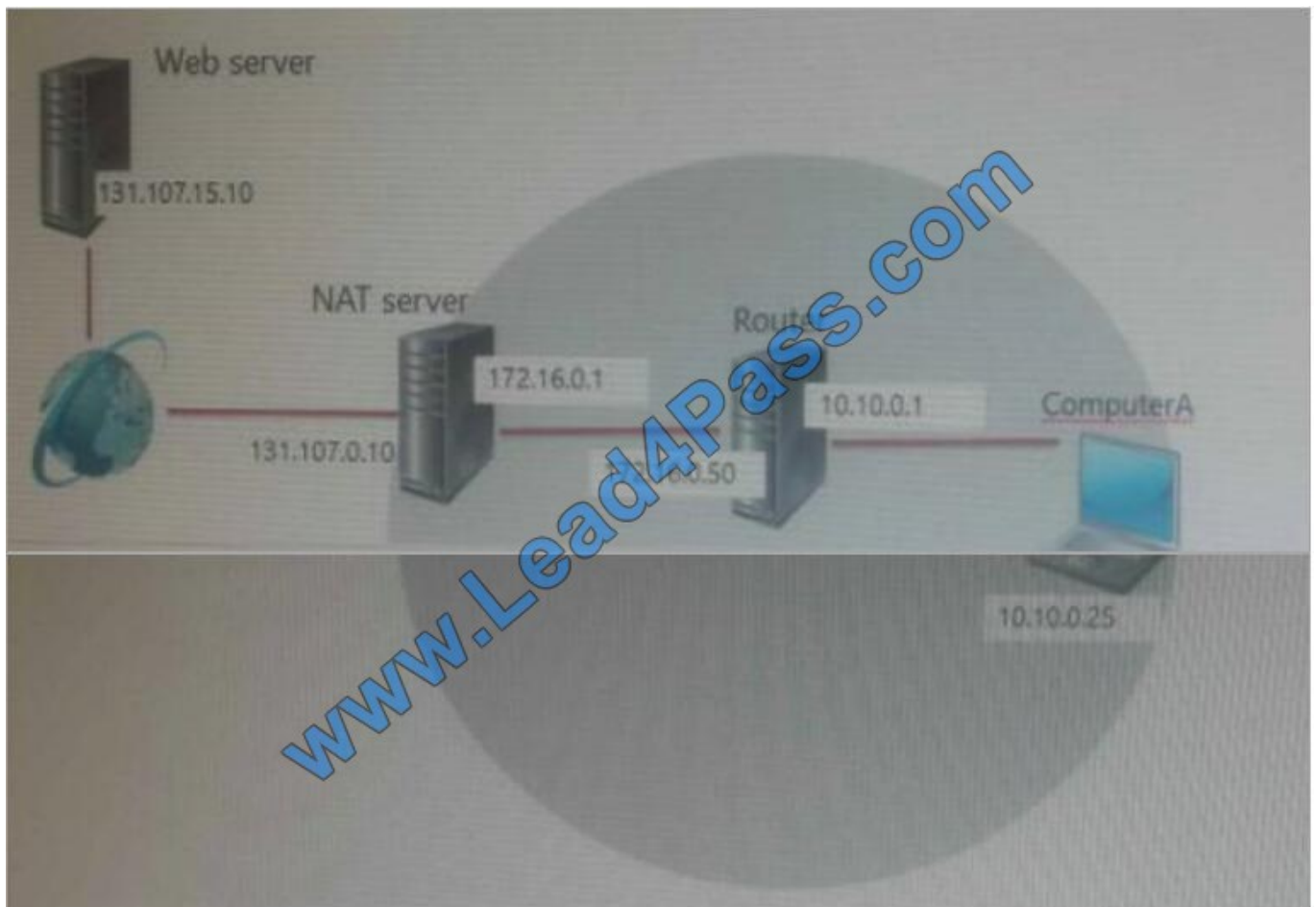
The -GpoPrefix parameter specifies the unique Group Policy object (GPO) prefix name that IPAM uses to create the group policy objects. Use this parameter only when the value of the ProvisioningMethod parameter is set to Automatic.

References: <https://docs.microsoft.com/en-us/powershell/module/ipamserver/set-ipamconfiguration?view=win10-ps>

### QUESTION 3

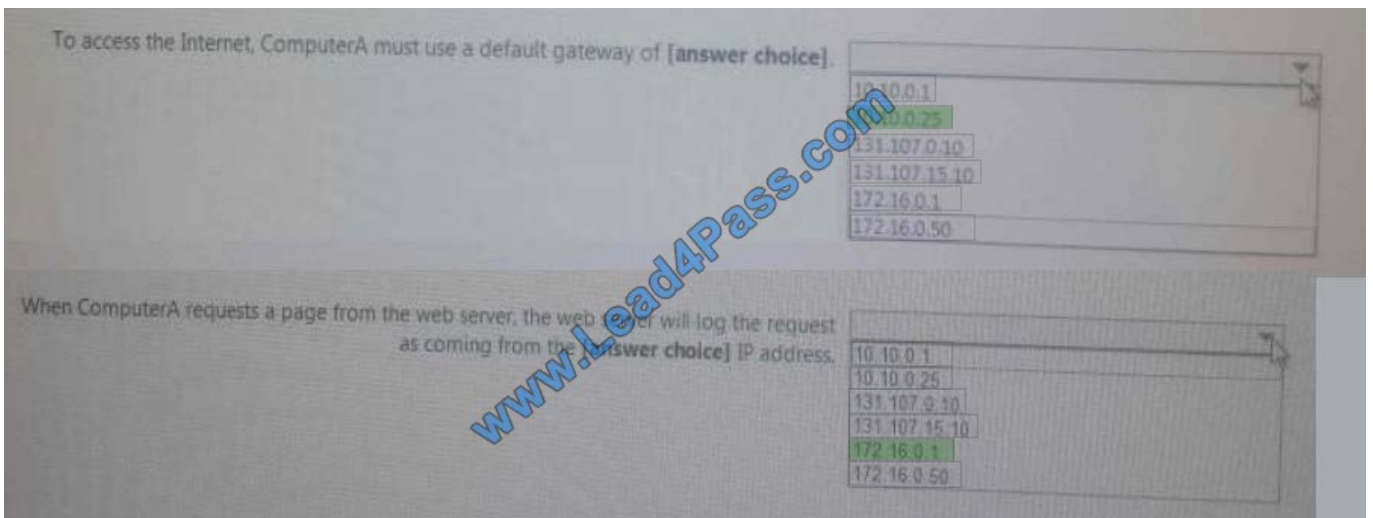
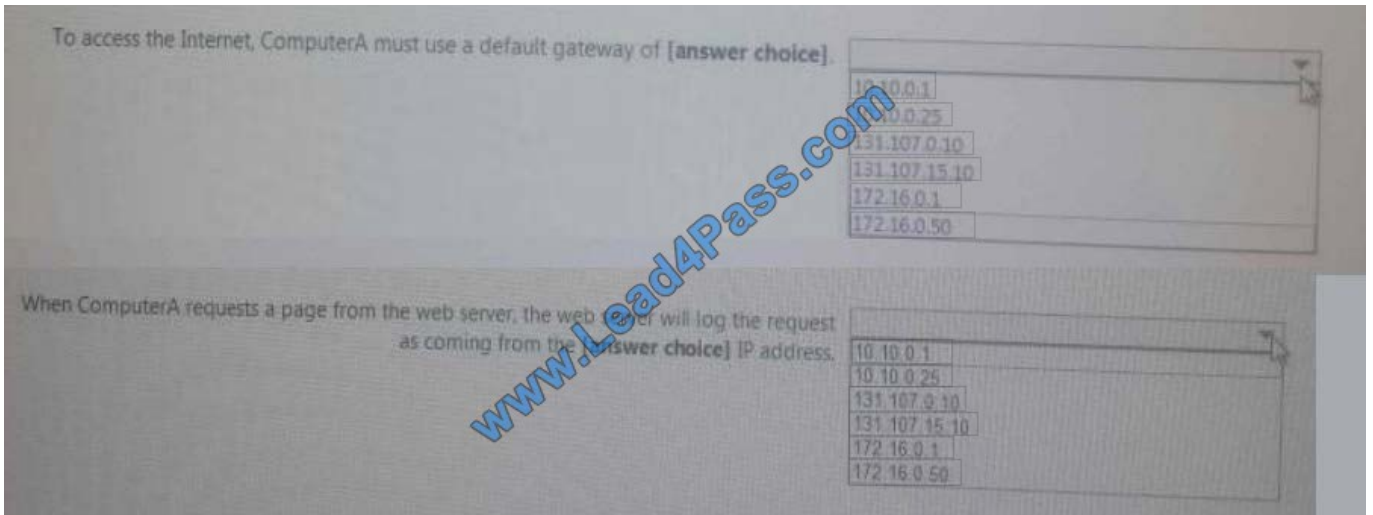
PS C:\> Invoke-IpamGpoProvisioning -Domain "child.contoso.com" -GpoPrefixName "IPAM1" -Force This command creates the universal group IPAMUG in the domain named child.contoso.com, if not already present, and adds the computer account of the local computer running the IPAM server to the group. This cmdlet creates and links the following IPAM GPOs: IPAM1\_DHCP, IPAM1\_DNS, and IPAM1\_DC\_NPS in the child.contoso.com domain to enable access for the group IPAMUG. This cmdlet also enables DNS read access for IPAMUG using domain wide DNS ACL. Since the domain controller is not explicitly specified, this cmdlet contacts the PDC emulator to complete the GPO operations. This cmdlet suppresses the default confirmation text. References: <https://technet.microsoft.com/en-us/itpro/powershell/windows/ipamserver/invoke-ipamgpoprovisioning> <https://docs.microsoft.com/en-us/powershell/module/ipamserver/invoke-ipamgpoprovisioning?view=win10-ps>

Your network is configured as shown in the network diagram.



Hot Area:

Correct Answer:



#### QUESTION 4

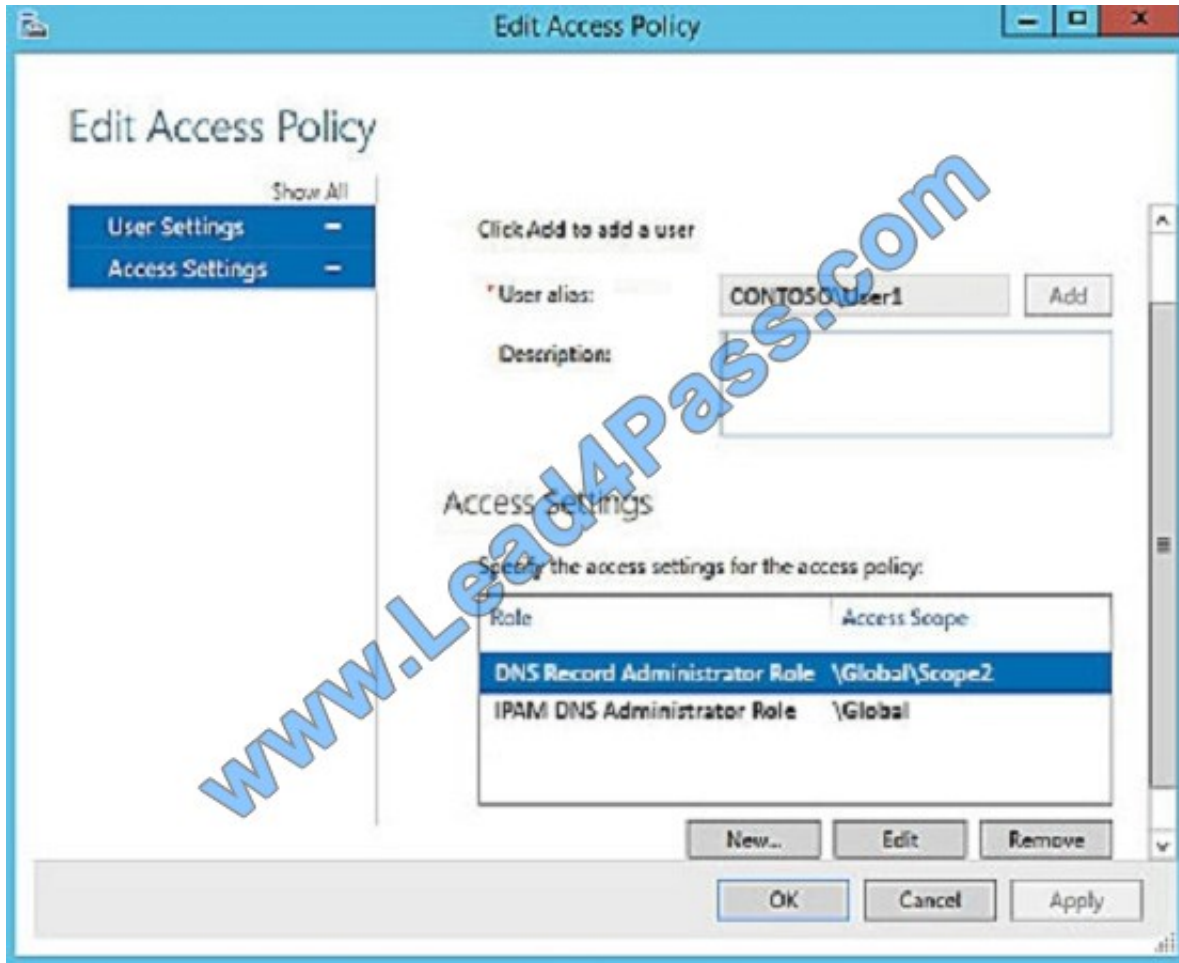
Your network contains an Active Directory domain named contoso.com. The domain contains a domain controller named Server1 and a member server named Server2.

Server1 has the DNS Server role installed. Server2 has IP Address Management (IPAM) installed. The IPAM server retrieves zones from Server1 as shown in the following table.

Zone name	Dynamic update setting	Access scope
Adatum.com	Secure	\Global
Fabrikam.com	None	\Global \Scope2

The IPAM server has one access policy configured as shown in the exhibit. (Click the Exhibit button.)





For each of the following statements, select Yes if the statement is true. Otherwise, select No.

Hot Area:

## Answer Area

Statements	Yes	No
User1 can add a host (A) record to adatum.com	<input type="radio"/>	<input type="radio"/>
User1 can add a host (A) record to fabrikam.com	<input type="radio"/>	<input type="radio"/>
User1 can delete the fabrikam.com zone.	<input type="radio"/>	<input type="radio"/>

Correct Answer:



## Answer Area

Statements	Yes	No
User1 can add a host (A) record to adatum.com	<input checked="" type="radio"/>	<input type="radio"/>
User1 can add a host (A) record to fabrikam.com	<input checked="" type="radio"/>	<input type="radio"/>
User1 can delete the fabrikam.com zone.	<input type="radio"/>	<input checked="" type="radio"/>

Box 1: Yes As a member of the IPAM DNS Administrator Role of the ADatum zone, User1 can add DNS records to it.

Box 2: Yes As a member of the DNS Record Administrator Role of the Fabrikam zone, User1 can add DNS records to it.

Box 3: No DNS Record Administrators cannot delete zones, only administer DNS records. References:

[https://technet.microsoft.com/en-us/library/hh831353\(v=ws.11\).aspx](https://technet.microsoft.com/en-us/library/hh831353(v=ws.11).aspx)

### QUESTION 5

You have a Hyper-V host named Server1 that runs Windows Server 2016. Server1 hosts a virtual machine named VM1.

You need to provide VM1 with direct access to a graphics processing unit (GPU) on Server1.

What should you do first?

- A. On VM1, install the Quality Windows Audio Video Experience (qWave) feature.
- B. Disable the display adapter device on Server1.
- C. In the settings of VM1, add a RemoteFX 3D Video Adapter.
- D. Dismount the display adapter on Server1.

Correct Answer: B

Before the physical device is allowed to be passed through to the VM, the device must be disabled on the host system. The physical device must be accessible/available exclusively to the VM only.

References: Introduction to Windows Server 2016 Hyper-V Discrete Device Assignment, page 5

<https://lenovopress.com/lp0088.pdf>

[Latest 70-743 Dumps](#)

[70-743 VCE Dumps](#)

[70-743 Practice Test](#)



To Read the [Whole Q&As](#), please purchase the [Complete Version](#) from [Our website](#).

## Try our product !

100% Guaranteed Success

100% Money Back Guarantee

365 Days Free Update

Instant Download After Purchase

24x7 Customer Support

Average 99.9% Success Rate

More than 800,000 Satisfied Customers Worldwide

Multi-Platform capabilities - [Windows](#), [Mac](#), [Android](#), [iPhone](#), [iPod](#), [iPad](#), [Kindle](#)

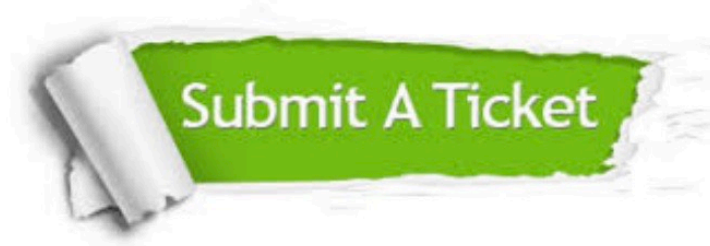
We provide exam PDF and VCE of Cisco, Microsoft, IBM, CompTIA, Oracle and other IT Certifications. You can view Vendor list of All Certification Exams offered:

<https://www.lead4pass.com/allproducts>

## Need Help

Please provide as much detail as possible so we can best assist you.

To update a previously submitted ticket:



 <p><b>One Year Free Update</b> Free update is available within One Year after your purchase. After One Year, you will get 50% discounts for updating. And we are proud to boast a 24/7 efficient Customer Support system via Email.</p>	 <p><b>Money Back Guarantee</b> To ensure that you are spending on quality products, we provide 100% money back guarantee for 30 days from the date of purchase.</p>	 <p><b>Security &amp; Privacy</b> We respect customer privacy. We use McAfee's security service to provide you with utmost security for your personal information &amp; peace of mind.</p>
---	---	--

Any charges made through this site will appear as Global Simulators Limited.

All trademarks are the property of their respective owners.

Copyright © lead4pass, All Rights Reserved.