



# 70-692<sup>Q&As</sup>

Upgrading Your Windows XP Skills to MCSA Windows 8

## Pass Microsoft 70-692 Exam with 100% Guarantee

Free Download Real Questions & Answers **PDF** and **VCE** file from:

<https://www.lead4pass.com/70-692.html>

100% Passing Guarantee  
100% Money Back Assurance

Following Questions and Answers are all new published by Microsoft  
Official Exam Center

-  **Instant Download** After Purchase
-  **100% Money Back** Guarantee
-  **365 Days** Free Update
-  **800,000+** Satisfied Customers



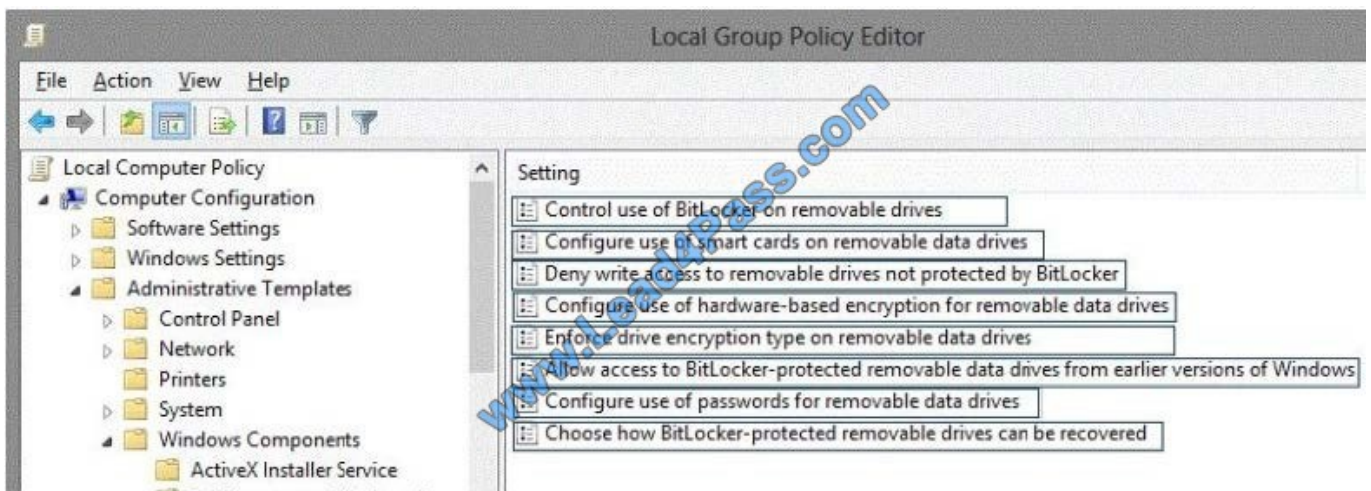


### QUESTION 1

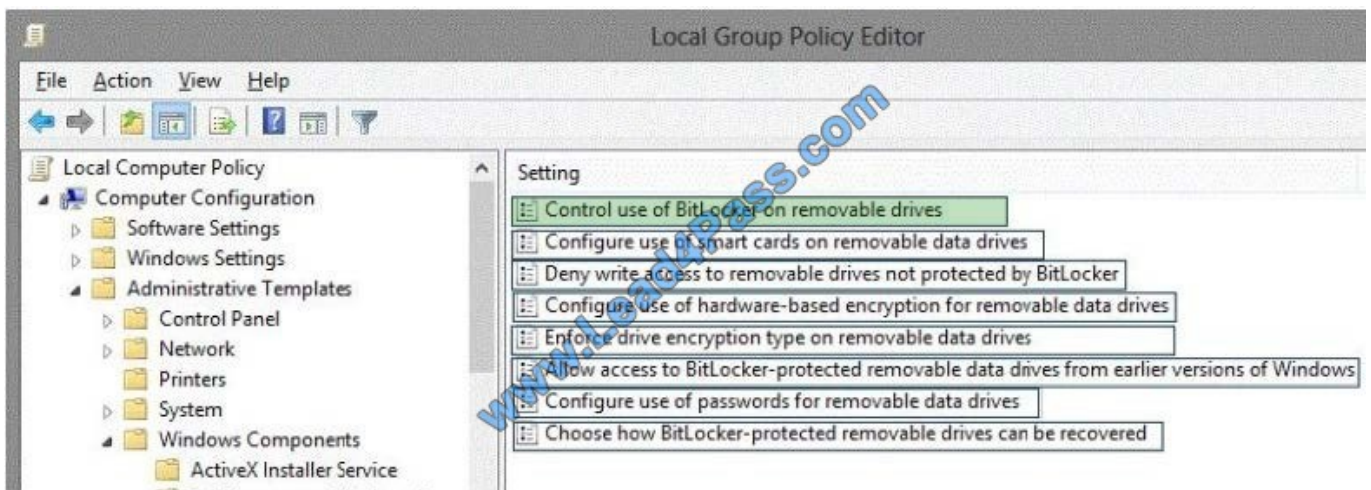
You administer Windows 8.1 computers in your company network. The security policies of the company require that USB storage devices are allowed only if they are protected with BitLocker To Go. You need to prevent users from removing BitLocker encryption from the USB storage devices.

Which configuration setting should you modify? (To answer, select the appropriate setting in the answer area.)

Hot Area:



Correct Answer:



### QUESTION 2

You have a client computer that runs Windows 8 Pro. The computer contains a storage pool. You need to remove a disk named Disk 2 from the storage pool.



What should you configure first? (To answer, select the appropriate option in the answer area.)

Hot Area:

Control Panel > System and Security > Storage Spaces

### Manage Storage Spaces

Use Storage Spaces to save files to two or more drives to help protect you from a drive failure. Storage Spaces also lets you easily add more drives if you run low on capacity. If you don't see task links, click Change settings.

[Change settings](#)

**Storage pool** Okay

Using 3.50 GB of 505 GB pool capacity

**Storage spaces**

- Storage space (E:) Okay  
Two-way mirror  
126 GB  
Using 2.00 GB pool capacity  
[View files](#)  
[Change](#)  
[Delete](#)

**Physical drives**

- Disk 1 Okay  
Attached via ATA  
1.18 % used  
Providing 126 GB pool capacity  
[Rename](#)
- Disk 2 Okay  
Attached via SCSI  
1.18 % used  
Providing 126 GB pool capacity  
[Rename](#)
- Virtual HD ATA Device Okay  
Attached via ATA  
0.19 % used  
Providing 126 GB pool capacity  
[Rename](#)  
[Remove](#)
- Microsoft Virtual Disk Okay  
Attached via SCSI  
0.19 % used  
Providing 126 GB pool capacity  
[Rename](#)  
[Remove](#)

Correct Answer:





Control Panel > System and Security > Storage Spaces

### Manage Storage Spaces

Home

Use Storage Spaces to save files to two or more drives to help protect you from a drive failure. Storage Spaces also lets you easily add more drives if you run low on capacity. If you don't see task links, click Change settings.

[Change settings](#)

Storage pool Okay

Using 3.50 GB of 505 GB pool capacity

[Create a storage space](#)  
[Add drives](#)  
[Rename pool](#)

Storage spaces

Storage space (E:) Okay  
Two-way mirror  
126 GB  
Using 2.00 GB pool capacity

[View files](#)  
[Change](#)  
[Delete](#)

Physical drives

Disk 1 Okay  
Attached via ATA  
1.18 % used  
Providing 126 GB pool capacity  
[Rename](#)

Disk 2 Okay  
Attached via SCSI  
1.18 % used  
Providing 126 GB pool capacity  
[Rename](#)

Virtual HD ATA Device Okay  
Attached via ATA  
0.19 % used  
Providing 126 GB pool capacity  
[Rename](#)  
[Remove](#)

Microsoft Virtual Disk Okay  
Attached via SCSI  
0.19 % used  
Providing 126 GB pool capacity  
[Rename](#)  
[Remove](#)

### QUESTION 3

You are the network administrator for Contoso.com and are creating an image for a Windows 8.1 implementation for all of your users.

You find out that an application your company has used for many years is not compatible with Windows 8.1. It has



always worked on your Vista computers with SP2. The application requires administrator privileges.

You need to configure the correct settings so that the application can run on Windows 8.

Which two actions should you perform? (Each correct answer presents part of the solution. Choose two.)

- A. Select Run this program as an administrator in the Compatibility Troubleshooter.
- B. Assign the application to Run as administrator on the Security tab of the application executable file properties.
- C. Modify the User Account Control Settings by adjusting the slider to Never Notify.
- D. Using the Compatibility Troubleshooter, check Run this application in compatibility mode for and select Vista (Service Pack 2).
- E. Using the Application Compatibility toolkit, run the Windows Vista Compatibility Evaluator for Windows 8, and select the Service Pack 2 option.

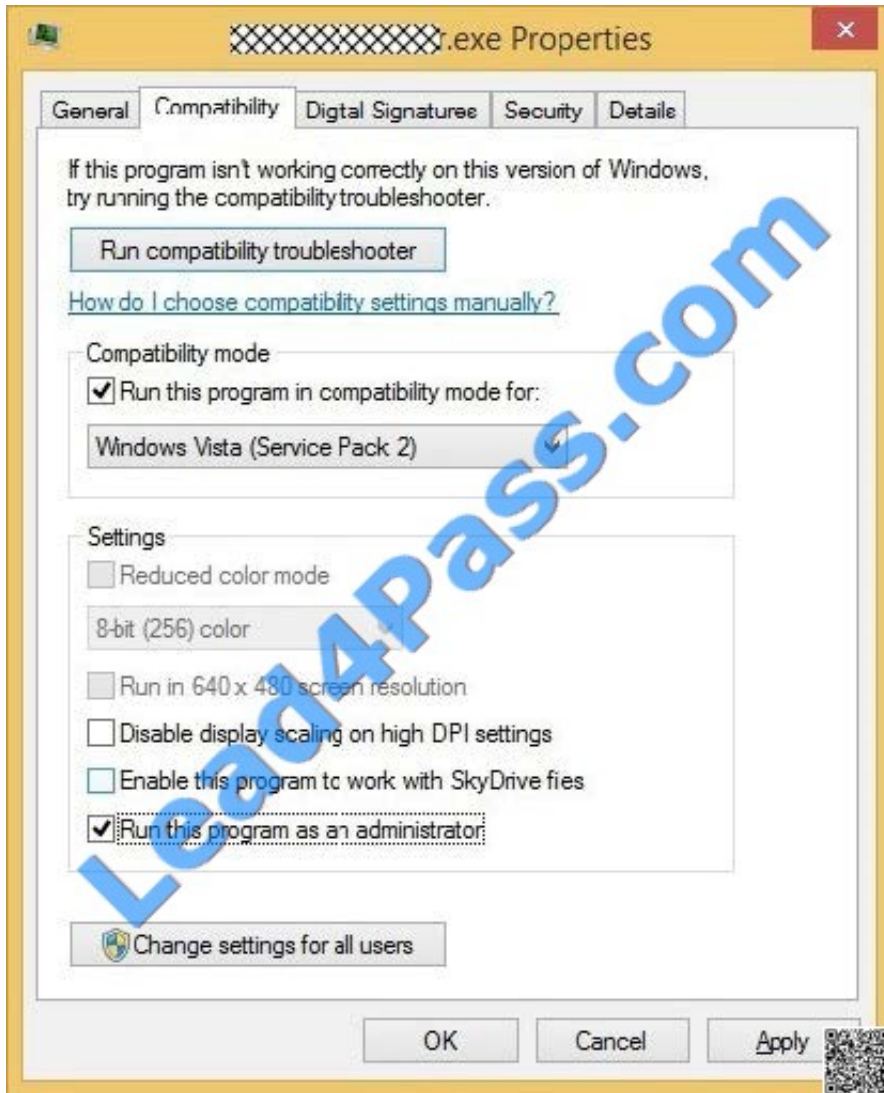
Correct Answer: DE



C:\Users\Chaudhry\Desktop\1.jpg



C:\Users\Chaudhry\Desktop\1.jpg



C:\Users\Chaudhry\Desktop\1.jpg

#### QUESTION 4

A company has an Active Directory Domain Services (AD DS) domain. All client computers run Windows 8.1.

You need to configure 20 portable computers so that they sleep after 20 minutes when running on battery power. You must accomplish this goal by using the least amount of administrative effort.

Which two actions should you perform? (Each correct answer presents part of the complete solution. Choose two.)

- A. Edit the local Group Policy to configure the Shut Down options.
- B. Create a Group Policy object (GPO) that configures the Sleep Management settings.
- C. Create a Group Policy object (GPO) that configures the Power Management settings.
- D. Link the Group Policy object (GPO) to the organizational unit containing the portable computers.
- E. Edit the local Group Policy to configure the Power Management settings.



Correct Answer: CD

Explanation: Put the Laptops into an OU.

Create an appropriate GPO.

Link the GPO to the OU.

Note:

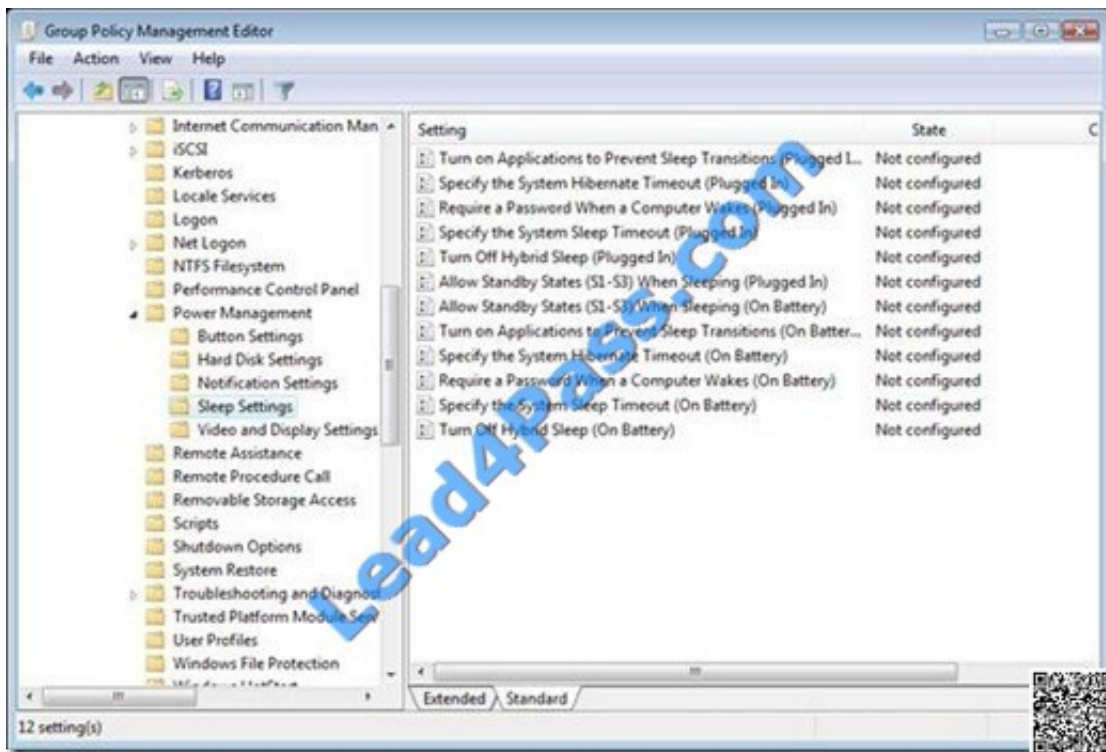
\* Networking power management (not sleep management) refers to the set of features that you can configure to allow the computers in your network to save energy.

Incorrect:

Local Group Policy would have to be edited locally on each laptop.

<http://blogs.technet.com/b/askds/archive/2008/03/19/managing-power-with-group-policy-part-2-or-3.aspx>

Managing Power with Group Policy: Part 2 of 3



C:\Users\Chaudhry\Desktop\1.jpg

Another related policy setting is Specify the System Sleep Timeout, only the value entered (in seconds) indicates how much idle time elapses before Windows enters sleep mode.

Further Information:

Put the Laptops into an OU.

Create an appropriate GPO.

Link the GPO to the OU.





## QUESTION 5

A company has 100 client computers that run Windows Vista. The company uses several custom applications.

The company plans to replace the Windows Vista computers with new computers that run Windows 8.1.

You need to establish which of the currently installed applications will work on Windows 8.1.

What should you do?

- A. Install and run the Windows App Certification Kit.
- B. Install and run the Windows Application Compatibility Toolkit.
- C. Install and run the Microsoft Deployment Toolkit.
- D. Install and run the Microsoft Assessment and Planning Toolkit.

Correct Answer: D

Explanation: <http://technet.microsoft.com/en-us/solutionaccelerators/dd537566.aspx>

<http://www.microsoft.com/en-us/download/details.aspx?id=30652> Windows Assessment and Deployment Kit (ADK) for Windows 8 The Windows Assessment and Deployment Kit (Windows ADK) is a collection of tools that you can use to

customize, assess, and deploy Windows operating systems to new computers.

Features available in the Windows ADK include:

Application Compatibility Toolkit (ACT) - The Application Compatibility Toolkit (ACT) helps IT Professionals understand potential application compatibility issues by identifying which applications are or are not compatible with the new versions

of the Windows operating system. ACT helps to lower costs for application compatibility evaluation by providing an accurate inventory of the applications in your organization.

ACT helps you to deploy Windows more quickly by helping to prioritize, test, and detect compatibility issues with your apps

Supported Operating System

To install the Windows ADK, your computer must be running one of the following operating systems:

Windows 8

Windows 7

Windows Server 2012

Windows Server 2008 R2

Windows Vista

Windows Server 2008

**Further Information:**

<http://www.microsoft.com/en-us/download/details.aspx?id=7826> Microsoft Assessment and Planning Toolkit

The Microsoft Assessment and Planning Toolkit makes it easy to assess your current IT infrastructure for a variety of technology migration projects. This Solution Accelerator provides a powerful inventory, assessment, and reporting tool to simplify the migration planning process.

Supported Operating System Windows 7 Service Pack 1 Windows 8 Windows 8.1 Windows Server 2008 R2 SP1 Windows Server 2012 Windows Server 2012 R2 <http://www.microsoft.com/en-us/download/details.aspx?id=25175> Microsoft Deployment Toolkit (MDT) 2012 Update 1

Microsoft Deployment Toolkit (MDT) 2012 Update 1 is the newest version of MDT, a Solution Accelerator for operating system and application deployment. MDT 2012 Update 1 supports deployment of Windows 8, Windows 7, Office 2010 and 365, Windows Server 2012, and Windows Server 2008 R2 in addition to deployment of Windows Vista, Windows Server 2008, Windows Server 2003, and Windows XP.

MDT 2012 Update 1 relies on several Windows deployment tools. After installation of the .msi package and startup of the Deployment Workbench, the user can choose to download and install the following major tools from the Components: Windows 8 Assessment and Deployment Kit

[70-692 PDF Dumps](#)

[70-692 Practice Test](#)

[70-692 Study Guide](#)



To Read the [Whole Q&As](#), please purchase the [Complete Version](#) from [Our website](#).

## Try our product !

100% Guaranteed Success

100% Money Back Guarantee

365 Days Free Update

Instant Download After Purchase

24x7 Customer Support

Average 99.9% Success Rate

More than 800,000 Satisfied Customers Worldwide

Multi-Platform capabilities - [Windows](#), [Mac](#), [Android](#), [iPhone](#), [iPod](#), [iPad](#), [Kindle](#)

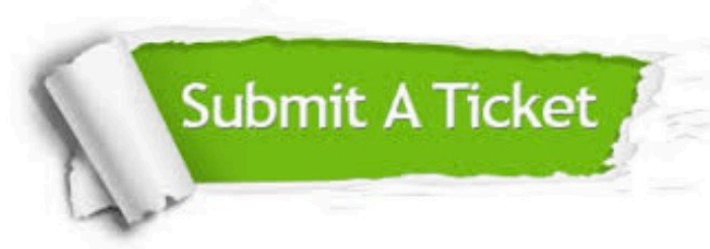
We provide exam PDF and VCE of Cisco, Microsoft, IBM, CompTIA, Oracle and other IT Certifications. You can view Vendor list of All Certification Exams offered:

<https://www.lead4pass.com/allproducts>

## Need Help

Please provide as much detail as possible so we can best assist you.

To update a previously submitted ticket:



 <p><b>One Year Free Update</b> Free update is available within One Year after your purchase. After One Year, you will get 50% discounts for updating. And we are proud to boast a 24/7 efficient Customer Support system via Email.</p>	 <p><b>Money Back Guarantee</b> To ensure that you are spending on quality products, we provide 100% money back guarantee for 30 days from the date of purchase.</p>	 <p><b>Security &amp; Privacy</b> We respect customer privacy. We use McAfee's security service to provide you with utmost security for your personal information &amp; peace of mind.</p>
---	---	--

Any charges made through this site will appear as Global Simulators Limited.

All trademarks are the property of their respective owners.

Copyright © lead4pass, All Rights Reserved.