



70-689^{Q&As}

Upgrading Your Skills to MCSA Windows 8

Pass Microsoft 70-689 Exam with 100% Guarantee

Free Download Real Questions & Answers **PDF** and **VCE** file from:

<https://www.lead4pass.com/70-689.html>

100% Passing Guarantee
100% Money Back Assurance

Following Questions and Answers are all new published by Microsoft
Official Exam Center

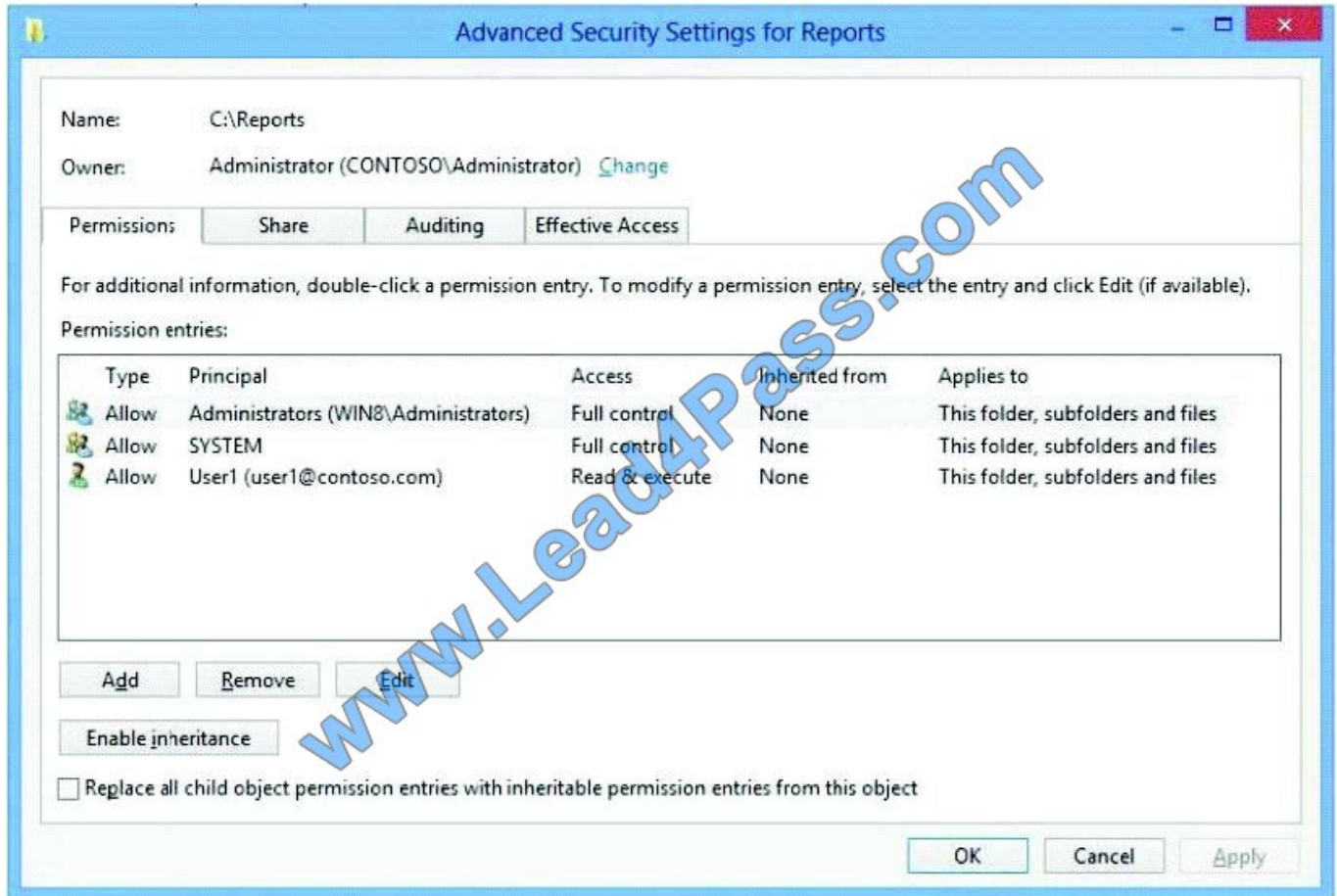
-  **Instant Download** After Purchase
-  **100% Money Back** Guarantee
-  **365 Days** Free Update
-  **800,000+** Satisfied Customers





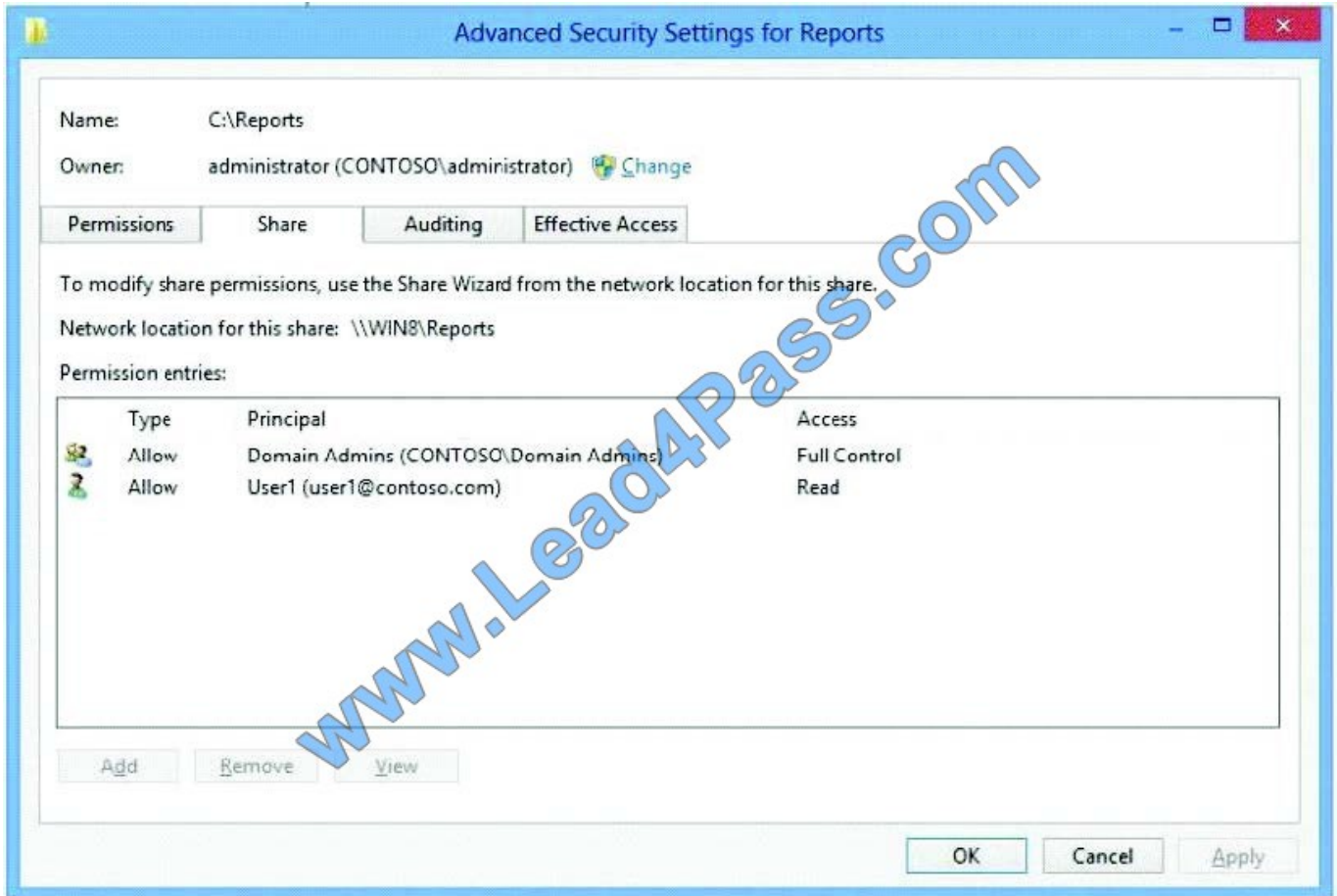
QUESTION 1

You administer a computer that runs Windows 8 Enterprise and is a member of an Active Directory domain.



You create a folder named C:\Reports and assign NTFS permissions as shown in Exhibit 1. (Click the Exhibit button.)

You share the folder over the network with Read permission for a domain user account named User1 as shown in Exhibit 2. (Click the Exhibit button.)



You want to provide access to the shared folder only for the time that User1 is a member of the domain security group named Project.

You need to assign the required permissions.

Which three actions should you perform in sequence? (To answer, move the appropriate actions from the list of actions to the answer area and arrange them in the correct order.)

Select and Place:

Answer Area

- Add a condition for a user group.
- Open the permission entry for User1.
- Add a condition for a device group.
- Click **Share**.
- Add the Project security group and grant it Read permission.
- Open the Sharing tab from the folder properties window.
- Open advanced security settings for the folder.



Correct Answer:

Answer Area

Open the Sharing tab from the folder properties window.

Click **Share**.

Add the Project security group and grant it Read permission.

Share Folders From 'Users Profile' Locations and Local Drives If you want to quickly share a folder residing in local drives or User Profile folders, open Properties dialog from right-click context menu, and then head over to Sharing tab. From Network File and Folder Sharing section, click Share to open File Sharing dialog. Now, select Everyone from drop-down menu, and click Add.

Project Files Properties

General Sharing Security Customize

Network File and Folder Sharing

Project Files Shared

Network Path: \\USMAN-PC\Users\Usman\Desktop

Share...

Advanced Sharing

Set custom permissions, create multiple advanced sharing options.

Advanced Sharing...

Password Protection

People without a user account and can access folders shared with everyone.

To change this setting, use the Network and Sharing Center.

Close

File Sharing

Choose people to share with

Type a name and then click Add, or click the arrow to find someone.

Everyone Add

Guest Usman Everyone Level

Create a new user...

I'm having trouble sharing

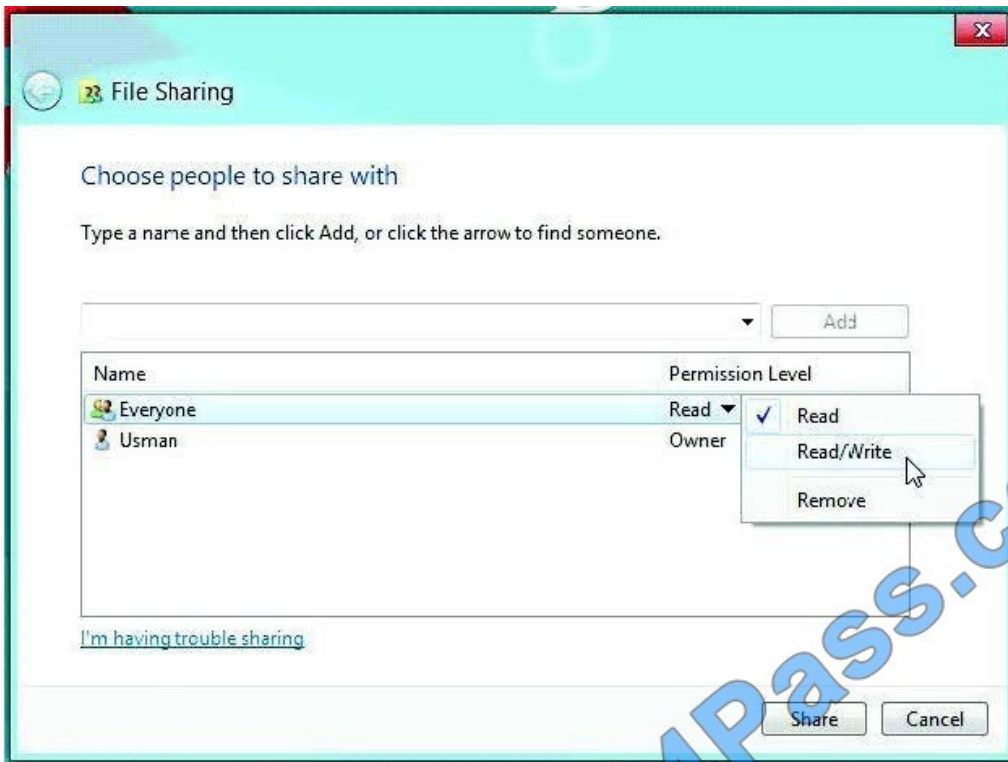
Share Cancel

This will add Everyone group in File Sharing list, and allow you to change folder access permission.

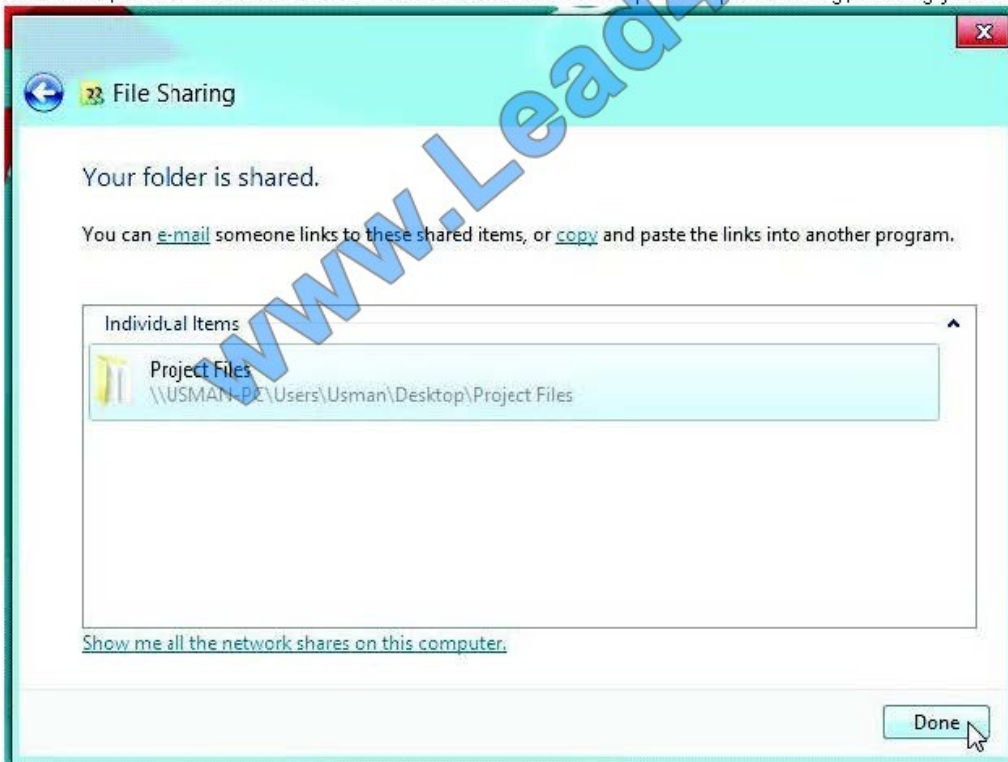
Using Read pull-down menu, you can give read and write permissions to users, and remove Everyone group from the



File Sharing list.



Once done, click **Share** to share the folder on the network. It will open a separate dialog, allowing you to email and copy the shared folder link.



Once done, click **Share** to share the folder on the network. It will open a separate dialog, allowing you to email and copy the shared folder link.

Now, you can access the shared folder from any PC connected on the network.



QUESTION 2

A company has an Active Directory Domain Services (AD DS) domain. All client computers run Windows 8.

You need to minimize the amount of Trusted Platform Module (TPM) authorization information that is stored in the registry.

What should you do?

- A. Create a Group Policy object (GPO) that disables the Configure the level of TPM owner authorization information available to operating system policy setting.
- B. Create a Group Policy object (GPO) that enables the Turn on TPM Local Encryption policy setting.
- C. Enable Platform Configuration Register indices (PCRs) 0, 2, 4, and 11 for the Configure TPM validation profile for native UEFI firmware configuration policy setting.
- D. Create a Group Policy object (GPO) that sets the Configure the level of TPM owner authorization information available to operating system policy setting to None.

Correct Answer: D

There are three TPM owner authentication settings that are managed by the Windows operating system.

You can choose a value of Full, Delegate, or None.

Full: This setting stores the full TPM owner authorization, the TPM administrative delegation blob, and the TPM user delegation blob in the local registry. With this setting, you can use the TPM without requiring remote or external storage of

the TPM owner authorization value. This setting is appropriate for scenarios that do not require you to reset the TPM anti-hammering logic or change the TPM owner authorization value. Some TPM-based applications may require that this

setting is changed before features that depend on the TPM antihammering logic can be used.

Delegated: This setting stores only the TPM administrative delegation blob and the TPM user delegation blob in the local registry. This setting is appropriate for use with TPM-based applications that depend on the TPM antihammering logic.

When you use this setting, we recommend using external or remote storage for the full TPM owner authorization value--for example, backing up the value in Active Directory Domain Services (AD DS). **None:** This setting provides compatibility

with previous operating systems and applications. You can also use it **Explanation:**

There are three TPM owner authentication settings that are managed by the Windows operating system.

You can choose a value of Full, Delegate, or None.

Full: This setting stores the full TPM owner authorization, the TPM administrative delegation blob, and the TPM user delegation blob in the local registry. With this setting, you can use the TPM without requiring remote or external storage of

the TPM owner authorization value. This setting is appropriate for scenarios that do not require you to reset the TPM



anti-hammering logic or change the TPM owner authorization value. Some TPMbased applications may require that this

setting is changed before features that depend on the TPM antihammering logic can be used.

Delegated: This setting stores only the TPM administrative delegation blob and the TPM user delegation blob in the local registry. This setting is appropriate for use with TPM-based applications that depend on the TPM antihammering logic.

When you use this setting, we recommend using external or remote storage for the full TPM owner authorization value--for example, backing up the value in Active Directory Domain Services (AD DS). None: This setting provides compatibility

with previous operating systems and applications. You can also use it

QUESTION 3

A company has Windows 8.1 client computers. The company uses Windows BitLocker Drive Encryption and BitLocker Network Unlock on all client computers.

Your need to collect information about BitLocker Network Unlock status.

Which command should you run?

- A. Run the manage-bde command.
- B. Run the BdeHdCfg command.
- C. Run the bitsadmin command.
- D. Run the BitLockerWizard command.

Correct Answer: A

If you have just installed a client and have Bitlocker enabled in your environment, it's likely that you will run in to performance issues while Bitlocker is encrypting the drive. With the help of this simple command, you can see the encryption

status. This command can also be run remotely on a client.

Manage-bde -status c:

[http://technet.microsoft.com/de-de/library/dd875513\(v=ws.10\).aspx#BKMK_status](http://technet.microsoft.com/de-de/library/dd875513(v=ws.10).aspx#BKMK_status)

QUESTION 4

You are a systems administrator for your company. The company has employees who work remotely by using a virtual private network (VPN) connection from their computers, which run Windows 8.1 Pro. These employees use an application

to access the company intranet database servers. The company recently decided to distribute the latest version of the application through using a public cloud.



Some users report that every time they try to download the application by using Internet Explorer, they receive a warning message that indicates the application could harm their computer.

You need to recommend a solution that prevents this warning message from appearing, without compromising the security protection of the computers.

What should you do?

- A. Instruct employees to disable the SmartScreen Filter from within the Internet Explorer settings.
- B. Publish the application through a public file transfer protocol (FTP) site.
- C. Digitally sign the application by using a trusted certificate, and then update the default App Package Deployment policy on all computers.
- D. Change the default Software Restriction Policies on the client computers.

Correct Answer: D

Administrators can use software restriction policies for the following tasks: Define what is trusted code

Design a flexible Group Policy for regulating scripts, executable files, and ActiveX controls

QUESTION 5

A company has Windows 8.1 client computers. Users store data files in their user profile libraries. You need to ensure that you can restore data files to any date while minimizing system overhead. Which two actions should you perform? (Each answer presents part of the solution. Choose two.)

- A. Enable Storage Spaces.
- B. Configure settings to save copies of files daily.
- C. Turn on File History.
- D. Configure Windows 7 File Recovery.

Correct Answer: BC

[Latest 70-689 Dumps](#)

[70-689 VCE Dumps](#)

[70-689 Brindumps](#)



To Read the [Whole Q&As](#), please purchase the [Complete Version](#) from [Our website](#).

Try our product !

100% Guaranteed Success

100% Money Back Guarantee

365 Days Free Update

Instant Download After Purchase

24x7 Customer Support

Average 99.9% Success Rate

More than 800,000 Satisfied Customers Worldwide

Multi-Platform capabilities - [Windows](#), [Mac](#), [Android](#), [iPhone](#), [iPod](#), [iPad](#), [Kindle](#)

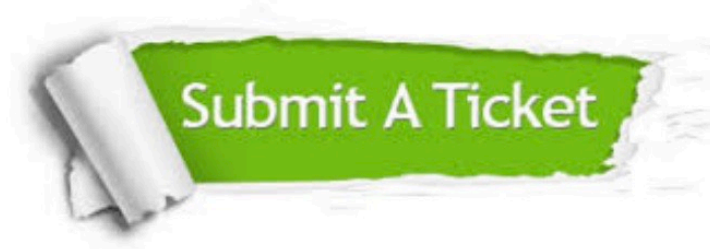
We provide exam PDF and VCE of Cisco, Microsoft, IBM, CompTIA, Oracle and other IT Certifications. You can view Vendor list of All Certification Exams offered:

<https://www.lead4pass.com/allproducts>

Need Help

Please provide as much detail as possible so we can best assist you.

To update a previously submitted ticket:



 <p>One Year Free Update Free update is available within One Year after your purchase. After One Year, you will get 50% discounts for updating. And we are proud to boast a 24/7 efficient Customer Support system via Email.</p>	 <p>Money Back Guarantee To ensure that you are spending on quality products, we provide 100% money back guarantee for 30 days from the date of purchase.</p>	 <p>Security & Privacy We respect customer privacy. We use McAfee's security service to provide you with utmost security for your personal information & peace of mind.</p>
---	---	--

Any charges made through this site will appear as Global Simulators Limited.

All trademarks are the property of their respective owners.

Copyright © lead4pass, All Rights Reserved.