



# 70-689<sup>Q&As</sup>

Upgrading Your Skills to MCSA Windows 8

## Pass Microsoft 70-689 Exam with 100% Guarantee

Free Download Real Questions & Answers **PDF** and **VCE** file from:

<https://www.lead4pass.com/70-689.html>

100% Passing Guarantee  
100% Money Back Assurance

Following Questions and Answers are all new published by Microsoft  
Official Exam Center

-  **Instant Download** After Purchase
-  **100% Money Back** Guarantee
-  **365 Days** Free Update
-  **800,000+** Satisfied Customers





### QUESTION 1

You support a computer that runs Windows 8 Enterprise.

You want to create a dual-boot configuration by using the native boot virtual hard disk (VHD) method.

You need to create an alternate Windows 8 installation.

Which three actions should you perform in sequence? (To answer, move the appropriate actions from the list of actions to the answer area and arrange them in the correct order.)

Select and Place:

Answer Area

- Update the system partition by using the Bootrec tool, and then modify the boot menu by using the BCDedit tool.
- Update the system partition by using the BCDedit tool, and then modify the boot menu by using the Bootrec tool.
- Install Windows 8 into a virtual hard disk (VHD) file.
- Edit the boot configuration by using the BCDedit tool on the virtual hard disk (VHD).
- Use the Computer Management console to create a virtual hard disk (VHD) file, and then create an active primary partition.
- Use Windows System Image Manager to create a virtual hard disk (VHD) file, and then create an active primary partition.
- Edit the boot configuration by using the BCDedit tool on the original Windows 8 installation.

Correct Answer:



Answer Area	
Update the system partition by using the Bootrec tool, and then modify the boot menu by using the BCDedit tool.	Use the Computer Management console to create a virtual hard disk (VHD) file, and then create an active primary partition.
Update the system partition by using the BCDedit tool, and then modify the boot menu by using the Bootrec tool.	Install Windows 8 into a virtual hard disk (VHD) file.
Edit the boot configuration by using the BCDedit tool on the virtual hard disk (VHD).	Edit the boot configuration by using the BCDedit tool on the original Windows 8 installation.
Use Windows System Image Manager to create a virtual hard disk (VHD) file, and then create an active primary partition.	

How to Create a Virtual Hard Disk To Boot Windows 7 From a (VHD) File Reference:

<http://www.youtube.com/watch?v=BV9LIC3Wz5A> <http://technet.microsoft.com/en-us/magazine/ee872416.aspx> Step-By-Step- 4 Methods to Dual Boot Microsoft Windows 8 and Windows Server 2012 with or without Windows 7 Reference 2: <http://blogs.technet.com/b/blainbar/archive/2012/09/25/step-by-step-4-ways-to-dual-boot-microsoftwindows-8-and-windows-server-2012-with-or-without-windows-7.aspx> Add a Native-Boot Virtual Hard Disk to the Boot Menu Reference 3: [http://technet.microsoft.com/en-us/library/dd799299\(v=ws.10\).aspx](http://technet.microsoft.com/en-us/library/dd799299(v=ws.10).aspx)

## QUESTION 2

A computer runs Windows 8.1. You install an application by running an .msi file.

You need to apply a patch to the application.

Which command should you run?

- A. `msiexec/x "C:\MyPatch.msp"`
- B. `dism /get-AppPatches /get-PackageInfo:C:\MyPatch.msp`
- C. `dism/Online/add-package:C:\MyPatch.msp`
- D. `msiexec/p "C:\MyPatch.msp"`

Correct Answer: D

C. would need the following format: `DISM.exe /Online /Add-Package /PackagePath:c:\file.msu /` correct answer D

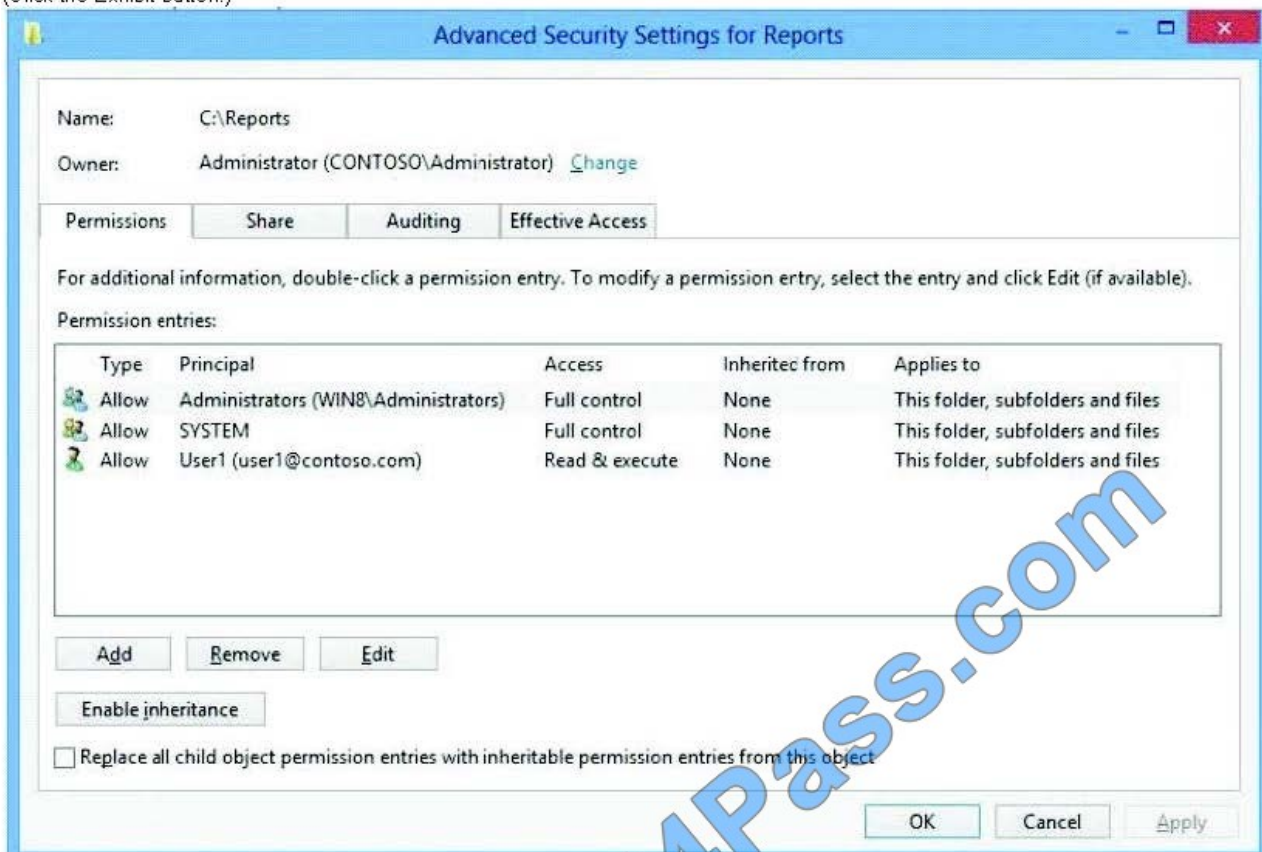
## QUESTION 3



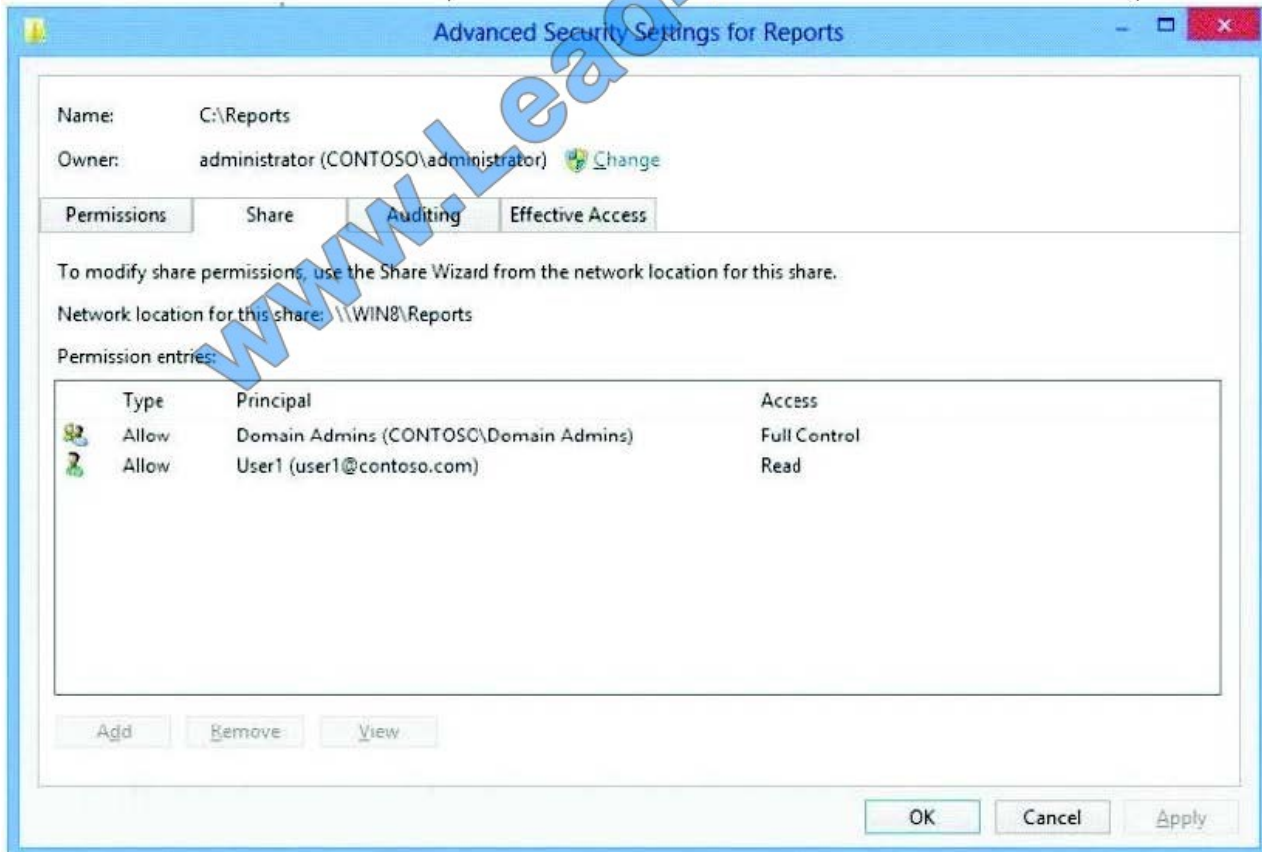
You support a desktop computer that runs Windows 8 Pro. The computer is joined to an Active Directory domain. The computer has a folder named C:\Reports. The folder NTFS permissions are shown in Exhibit 1.



(Click the Exhibit button.)



The folder is shared over the network with Read permission for a domain user account named User1 as shown in Exhibit 2. (Click the Exhibit button.)





(Click the Exhibit button.) The folder is shared over the network with Read permission for a domain user account named User1 as shown in Exhibit 2. (Click the Exhibit button.)

Members of the domain security group named Accountants must have access to the shared folder.

You need to assign the required permissions.

Which three actions should you perform in sequence? (To answer, move the appropriate actions from the list of actions to the answer area and arrange them in the correct order.)

Select and Place:

Answer Area

- Open the Sharing tab from the folder properties window.
- Open permission entry for User1.
- Add a condition for the Accountants group.
- Click the **Share...** button.
- Add the Accountants security group and grant it Read permission.
- Add a condition for a device group.
- Open advanced security settings for the folder.

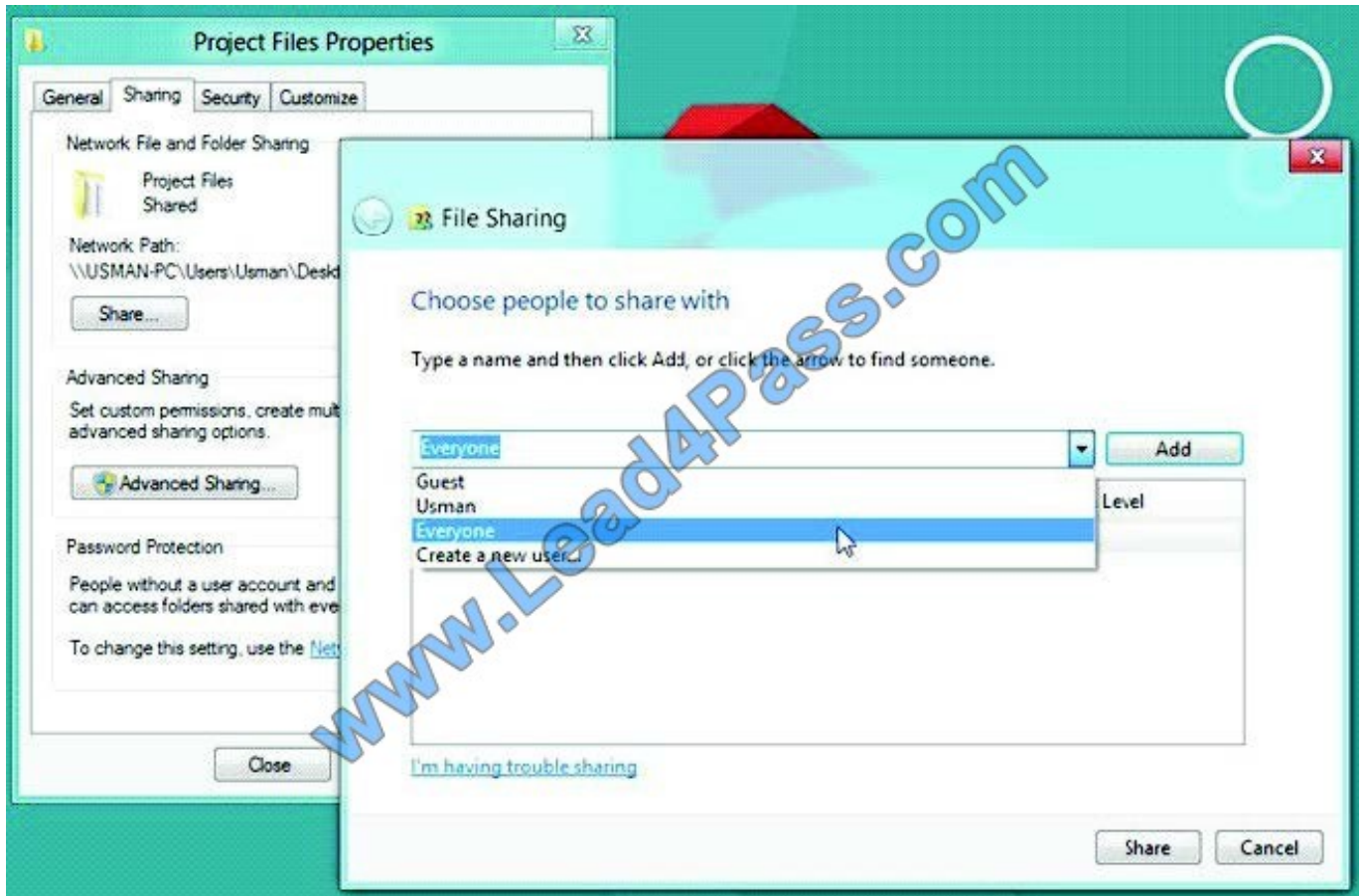
Correct Answer:

Answer Area

- Open the Sharing tab from the folder properties window.
- Click the **Share...** button.
- Add the Accountants security group and grant it Read permission.

- Open permission entry for User1.
- Add a condition for the Accountants group.
- Add a condition for a device group.
- Open advanced security settings for the folder.

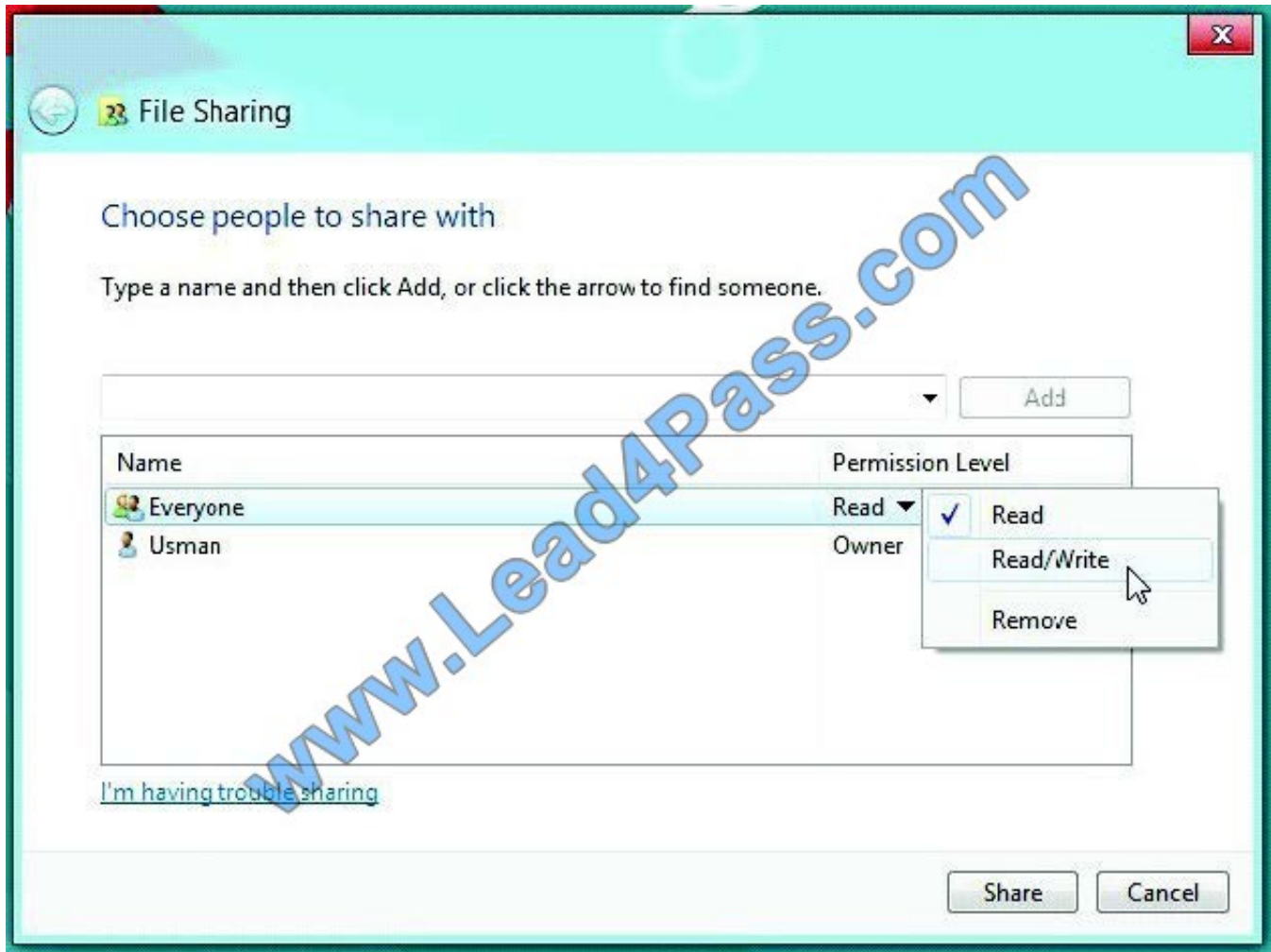
Share Folders From 'Users Profile' Locations and Local Drives If you want to quickly share a folder residing in local drives or User Profile folders, open Properties dialog from right-click context menu, and then head over to Sharing tab. From Network File and Folder Sharing section, click Share to open



File Sharing dialog. Now, select Everyone from drop-down menu, and click Add.

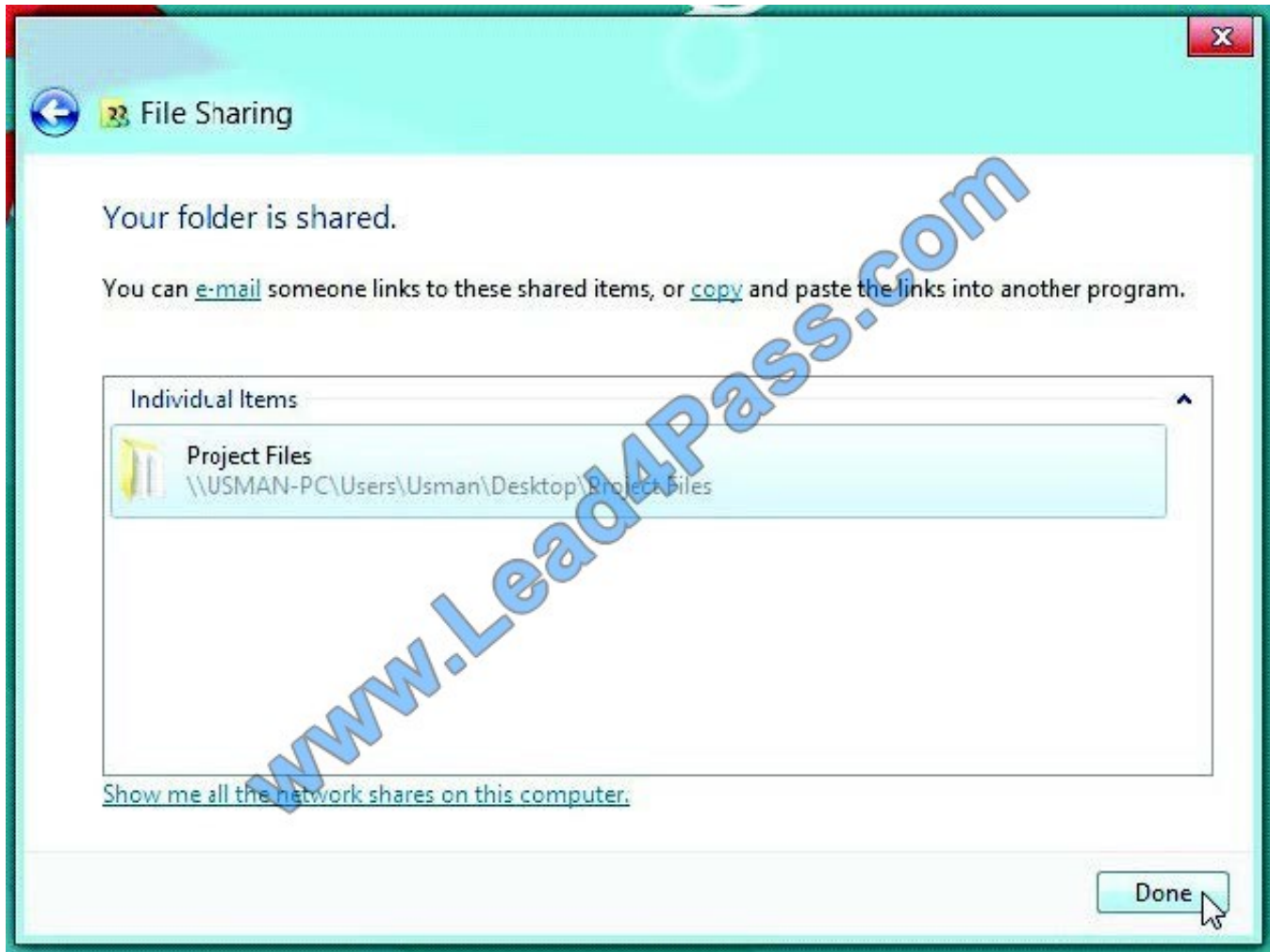
This will add Everyone group in File Sharing list, and allow you to change folder access permission.

Using Read pull-down menu, you can give read and write permissions to users, and remove Everyone group from the File Sharing list.



Once done, click Share to share the folder on the network. It will open a separate dialog, allowing you to email and copy the shared folder link.





Now, you can access the shared folder from any PC connected on the network.

#### QUESTION 4

A company has an Active Directory Domain Services (AD DS) domain. All client computers run Windows 7. You plan to upgrade the client computers to Windows 8 Pro.

You need to choose the methods that do not require the manual entry of a product key during the upgrade.

Which two methods should you choose? (Each correct answer presents a complete solution. Choose two.)

- A. Use the Windows 8 online upgrade tool.
- B. Use Group Policy to assign the Windows 8 installation file to the client computers.
- C. Use the Microsoft Deployment Toolkit.
- D. Extract the contents of the Windows 8 .iso image file to a new shared folder and run the setup program from that folder.

Correct Answer: CD



**QUESTION 5**

Hardware build name	Operating system	USB port	Processor	Memory	Firmware
Hardware 1	Windows XP Professional	USB 3.0	64-bit	8 GB	BIOS
Hardware 2	Windows 7 Enterprise	USB 3.0	64-bit	8 GB	UEFI
Hardware 3	Windows 7 Enterprise	USB 3.0	32-bit	1 GB	BIOS
Hardware 4	Windows 7 Enterprise	USB 2.0	32-bit	4 GB	UEFI
Hardware 5	Windows 7 Enterprise	USB 2.0	64-bit	2 GB	UEFI

Your company has five hardware builds for client computers. The hardware builds are configured as shown in the following table.

You plan to provide some users with Windows To Go disks that contain a corporate image of the 64-bit version of Windows 8.1 Enterprise and several line-of-business (LOB) applications.

In the table below, identify whether the hardware build is compatible or incompatible with the Windows To Go disks. Make only one selection in each row. Each correct selection is worth one point.

Hot Area:

Computer build	Compatible	Incompatible
Hardware1	<input checked="" type="checkbox"/>	<input type="checkbox"/>
Hardware2	<input type="checkbox"/>	<input type="checkbox"/>
Hardware3	<input checked="" type="checkbox"/>	<input type="checkbox"/>
Hardware4	<input checked="" type="checkbox"/>	<input type="checkbox"/>
Hardware5	<input checked="" type="checkbox"/>	<input type="checkbox"/>

Correct Answer:



Computer build	Compatible	Incompatible
Hardware1	<input checked="" type="checkbox"/>	<input type="checkbox"/>
Hardware2	<input checked="" type="checkbox"/>	<input type="checkbox"/>
Hardware3	<input type="checkbox"/>	<input checked="" type="checkbox"/>
Hardware4	<input type="checkbox"/>	<input checked="" type="checkbox"/>
Hardware5	<input checked="" type="checkbox"/>	<input type="checkbox"/>

Explanation:

\* 64-bit Windows 8 Enterprise cannot run on 32-bit processors, so Hardware3 and Hardware4 are both incompatible.

\* The Windows 8 Enterprise 2 GB RAM requirement is met by the 64-bit profiles:

Note:

Windows To Go is a feature in Windows 8 Enterprise that allows Windows 8 Enterprise to boot and run from mass storage devices such as USB flash drives and external hard disk drives.

Both USB 2.0 and USB 3.0 work fine with Windows to Go.

The Unified Extensible Firmware Interface (UEFI) (pronounced as an initialism U-E-F-I or like "unify" without the n) is a specification that defines a software interface between an operating system and platform firmware. UEFI is meant to

replace the Basic Input/Output System (BIOS) firmware interface, present in all IBM PC-compatible personal computers. In practice, most UEFI images provide legacy support for BIOS services

[70-689 PDF Dumps](#)

[70-689 Practice Test](#)

[70-689 Exam Questions](#)



To Read the [Whole Q&As](#), please purchase the [Complete Version](#) from [Our website](#).

## Try our product !

100% Guaranteed Success

100% Money Back Guarantee

365 Days Free Update

Instant Download After Purchase

24x7 Customer Support

Average 99.9% Success Rate

More than 800,000 Satisfied Customers Worldwide

Multi-Platform capabilities - [Windows](#), [Mac](#), [Android](#), [iPhone](#), [iPod](#), [iPad](#), [Kindle](#)

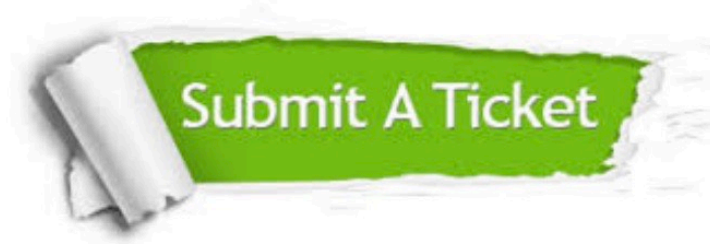
We provide exam PDF and VCE of Cisco, Microsoft, IBM, CompTIA, Oracle and other IT Certifications. You can view Vendor list of All Certification Exams offered:

<https://www.lead4pass.com/allproducts>

## Need Help

Please provide as much detail as possible so we can best assist you.

To update a previously submitted ticket:



 <p><b>One Year Free Update</b> Free update is available within One Year after your purchase. After One Year, you will get 50% discounts for updating. And we are proud to boast a 24/7 efficient Customer Support system via Email.</p>	 <p><b>Money Back Guarantee</b> To ensure that you are spending on quality products, we provide 100% money back guarantee for 30 days from the date of purchase.</p>	 <p><b>Security &amp; Privacy</b> We respect customer privacy. We use McAfee's security service to provide you with utmost security for your personal information &amp; peace of mind.</p>
---	---	--

Any charges made through this site will appear as Global Simulators Limited.

All trademarks are the property of their respective owners.

Copyright © lead4pass, All Rights Reserved.