



70-687^{Q&As}

Configuring Windows 8.1

Pass Microsoft 70-687 Exam with 100% Guarantee

Free Download Real Questions & Answers **PDF** and **VCE** file from:

<https://www.lead4pass.com/70-687.html>

100% Passing Guarantee
100% Money Back Assurance

Following Questions and Answers are all new published by Microsoft
Official Exam Center

-  **Instant Download** After Purchase
-  **100% Money Back** Guarantee
-  **365 Days** Free Update
-  **800,000+** Satisfied Customers





QUESTION 1

You administer Windows 8 Pro computers in your company network. A server named Server1 runs Windows Server 2012. Server1 allows incoming VPN and Remote Desktop connections.

A remote user requires access to files on Server1.

You need to prevent the user from downloading any files from Server1 to his local computer. Your solution must ensure that the user can read the files on Server1. What should you do?

- A. Create a new VPN connection. Disable local drive mappings.
- B. Create a new Remote Desktop connection.
- C. Set the Local Computer policy to Disable drives redirection for Remote Desktop Services.
- D. Create a new Remote Desktop connection. Set the Local Computer policy to Disable clipboard redirection for Remote Desktop Services.

Correct Answer: C

QUESTION 2

You are employed as an administrator at contoso.com.

The network consists of a single Active Directory Domain Services (AD DS) domain, named contoso.com.

All workstations on the contoso.com network have Windows 8 installed.

You need to configure files history on a client system.

You notice that the free storage space on the selected drive is low, but you do not have a spare drive to replace it.

What should you do?

- A. Configure the save copies of files setting to back up files once a day.
- B. Configure Size of offline cache setting to 2%
- C. Keep saved versions setting to be 1 month
- D. Keep saved versions setting until space is needed

Correct Answer: D

QUESTION 3

A company has 100 client computers that run various editions of Windows 7. The company plans to upgrade or replace computers so that all client computers run an edition of Windows 8.1. The company plans to use the following programs and features on the Windows 8 computers:



32-bit and 64-bit software

Desktop apps

Windows Media Player

Storage Spaces

You need to identify the installation or upgrade paths that support the programs and features.

Which three paths meet the requirements? (Each correct answer presents a complete solution. Choose three.)

A.

Attach the VHD file by using Disk Management.

B.

Import the contents of the system store from a file.

C.

Export the contents of the system store into a file.

D.

Make the VHD disk bootable.

E.

Create a new empty boot configuration data store.

F.

Create a new entry in the boot configuration data store.

Correct Answer: ABC

QUESTION 4

A company has client computers that run Windows 8. Each employee has one client computer at the office. Some employees also have personal computers at home.

The company has applications that run only on Windows 8.

You need to deploy Windows To Go so that employees can run the applications on their home computers.

Which two command-line tools should you use? (Each correct answer presents part of the solution. Choose two.)

A. bcdedit

B. DISM



C. bcdboot

D. ImageX

Correct Answer: BC

See step 12 and 13 below.

Create Windows To Go on any edition of Windows 8:

Launch an administrative level command prompt.

Make sure that your USB Drive is plugged in and then type in diskpart and hit Enter.

List the available disks by running "list disk" and you should see your usb device. Select your USB drive by typing "select disk #" and hit Enter. For example, "select disk 3".

Clean the partitions on the disk by typing "clean" and hit Enter. Now create the boot partition by running the following command: create partition primary size=350

Now create the OS partition by running the following command to create a partition taking up all remaining space: create partition primary The boot partition needs to be formatted, configured and assigned a drive letter, run the following

commands: select partition 1 format fs=fat32 quickactive assign letter=b (if the b drive letter is already in use on your PC, substitute a different letter and replace b with your letter throughout the rest of this guide) The same must be done for the

OS partition, run the following different commands: select partition 2 format fs=ntfs quickassign letter=o (if the o drive letter is already in use on your PC, substitute a different letter and replace o with your letter throughout the rest of this guide)

Exit Diskpart by typing Exit.

Extract the install.wim file from the \sources\ directory of the Windows 8 install ISO to c:\wim\. On Windows 8 you can just double click an ISO to mount and then browse it.

Use DISM to deploy the Windows 8 files to the OS partition of the USB device by running: dism /apply-image /imagefile:c:\wim\install.wim /index:1 /applydir:o:\ The boot manager needs to be installed on the boot partition with the help of the

bcdboot utility. Run the following command: o:\windows\system32\bcdboot

o:\windows /f ALL /s b:

Reboot your computer and test your new Windows 8 To Go device built on Windows 8. Make sure the PC is configured to boot to USB before your local hard drive.

Reference: How to Create a Windows To Go USB Drive

QUESTION 5

You have a Windows 8 Pro laptop. You set the Power Options so the laptop does not sleep when plugged in.

When the laptop is not plugged in, it will go to sleep but not always after the same amount of time. It also wakes itself up seemingly randomly without user intervention.



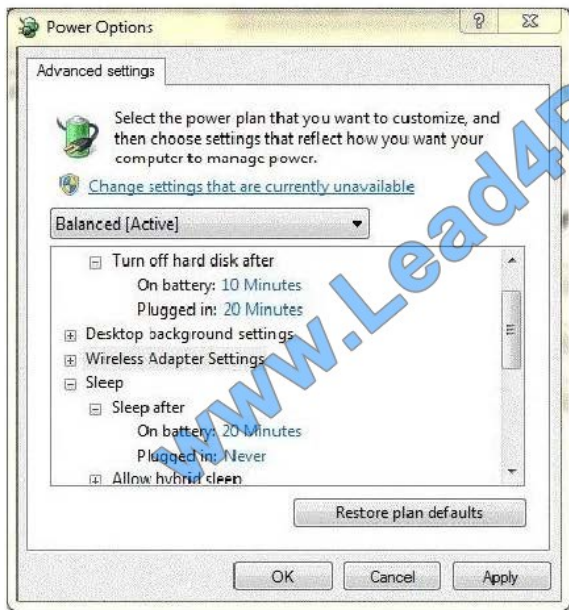
You need to confirm that the sleep settings are configured when the laptop is functioning on battery power, and you need to identify what may be causing the machine to wake up or is preventing it from sleeping.



You run the command Powercfg /devicequery. The configuration is shown in the following exhibit (Click the Exhibit button.)

```
Administrator: Command Prompt
C:\Windows\system32>powercfg /devicequery /?
POWERCFG /DEVICEQUERY <QUERYFLAG>
Description:
  Returns a list of devices that meet the specified criteria.
Parameter List:
  <QUERYFLAG> Specifies one of the following criteria:
  wake_from_S1_supported  Return all devices that support waking the system
                          from a light sleep state.
  wake_from_S2_supported  Return all devices that support waking the system
                          from a deeper sleep state.
  wake_from_S3_supported  Return all devices that support waking the system
                          from the deepest sleep state.
  wake_from_any           Return all devices that support waking the system
                          from any sleep state.
  S1_supported           List devices supporting light sleep.
  S2_supported           List devices supporting deeper sleep.
  S3_supported           List devices supporting deepest sleep.
  S4_supported           List devices supporting hibernation.
  wake_programmable     List devices that are user-configurable to wake
                          the system from a sleep state.
  wake_armed            List devices that are currently configured to
                          wake the system from any sleep state.
  all_devices           Return all devices present in the system.
Examples:
  POWERCFG /DEVICEQUERY wake_armed
C:\Windows\system32>powercfg /devicequery wake_armed
Agere Systems HDA Modem
Remote Desktop Keyboard Device
Remote Desktop Mouse Device
C:\Windows\system32>
```

You open the Power Options, which are shown in the following exhibit. (Click the Exhibit button.)



Finally, you run powercfg /request from the command line. The configuration is shown in the following exhibit. (Click the Exhibit button.)

```
Administrator: Command Prompt
Microsoft Windows [Version 6.2.9200]
(c) 2012 Microsoft Corporation. All rights reserved.
C:\Windows\system32>powercfg /request
DISPLAY:
None.

SYSTEM:
[SERVICE] \Device\HarddiskVolume2\Windows\System32\suchost.exe (CryptSvc)
Remote Desktop Services Power Request

AWAYMODE:
None.

EXECUTION:
None.

PERFBOOST:
None.

FULLSCREENVIDEO:
None.
C:\Windows\system32>
```



You run the command `Powercfg /devicequery`. The configuration is shown in the following exhibit (Click the Exhibit button.) You open the Power Options, which are shown in the following exhibit. (Click the Exhibit button.) Finally, you run `powercfg /request` from the command line. The configuration is shown in the following exhibit. (Click the Exhibit button.)

Consider each of the following statements. Does the information in the three screenshots support the inference as stated? (Each correct selection is worth one point.)

Hot Area:

Answer Area

	Yes	No
The current power plan puts the computer to sleep after 20 minutes.	<input type="radio"/>	<input type="radio"/>
The Agere System's HDA Modem device is allowed to wake the system from sleep state.	<input type="radio"/>	<input type="radio"/>
The Remote Desktop Service is the only software application to make a Power Request.	<input type="radio"/>	<input type="radio"/>

Correct Answer:

Answer Area

	Yes	No
The current power plan puts the computer to sleep after 20 minutes.	<input checked="" type="radio"/>	<input type="radio"/>
The Agere System's HDA Modem device is allowed to wake the system from sleep state.	<input checked="" type="radio"/>	<input type="radio"/>
The Remote Desktop Service is the only software application to make a Power Request.	<input type="radio"/>	<input checked="" type="radio"/>



[70-687 PDF Dumps](#)

[70-687 Exam Questions](#)

[70-687 Braindumps](#)



To Read the [Whole Q&As](#), please purchase the [Complete Version](#) from [Our website](#).

Try our product !

100% Guaranteed Success

100% Money Back Guarantee

365 Days Free Update

Instant Download After Purchase

24x7 Customer Support

Average 99.9% Success Rate

More than 800,000 Satisfied Customers Worldwide

Multi-Platform capabilities - [Windows](#), [Mac](#), [Android](#), [iPhone](#), [iPod](#), [iPad](#), [Kindle](#)

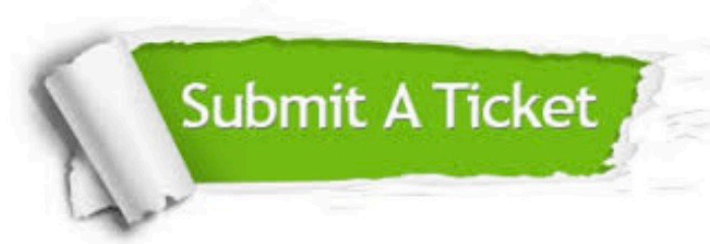
We provide exam PDF and VCE of Cisco, Microsoft, IBM, CompTIA, Oracle and other IT Certifications. You can view Vendor list of All Certification Exams offered:

<https://www.lead4pass.com/allproducts>

Need Help

Please provide as much detail as possible so we can best assist you.

To update a previously submitted ticket:



 <p>One Year Free Update Free update is available within One Year after your purchase. After One Year, you will get 50% discounts for updating. And we are proud to boast a 24/7 efficient Customer Support system via Email.</p>	 <p>Money Back Guarantee To ensure that you are spending on quality products, we provide 100% money back guarantee for 30 days from the date of purchase.</p>	 <p>Security & Privacy We respect customer privacy. We use McAfee's security service to provide you with utmost security for your personal information & peace of mind.</p>
---	---	--

Any charges made through this site will appear as Global Simulators Limited.

All trademarks are the property of their respective owners.

Copyright © lead4pass, All Rights Reserved.