



70-680^{Q&As}

Windows 7 Configuring

Pass Microsoft 70-680 Exam with 100% Guarantee

Free Download Real Questions & Answers **PDF** and **VCE** file from:

<https://www.lead4pass.com/70-680.html>

100% Passing Guarantee
100% Money Back Assurance

Following Questions and Answers are all new published by Microsoft
Official Exam Center

-  **Instant Download** After Purchase
-  **100% Money Back** Guarantee
-  **365 Days** Free Update
-  **800,000+** Satisfied Customers





QUESTION 1

You have a computer that runs Windows 7. Multiple users share the computer. The computer contains a folder named C:\folder1.

You need to identify all of the encrypted files in C:\folder1.

Which command should you run?

- A. Cipher C:\folder1
- B. Dir C:\folder1 /OE
- C. Fsutil C:\folder1
- D. Wfs C:\folder1

Correct Answer: A

Cipher

Displays or alters the encryption of folders and files on NTFS volumes. Used without parameters, cipher displays the encryption state of the current folder and any files it contains.

QUESTION 2

Your company has an Active Directory domain. All computers are members of the domain. Your network contains an internal Web site that uses Integrated Windows Authentication.

From a computer that runs Windows 7, you attempt to connect to the Web site and are prompted for authentication.

You verify that your user account has permission to access the Web site.

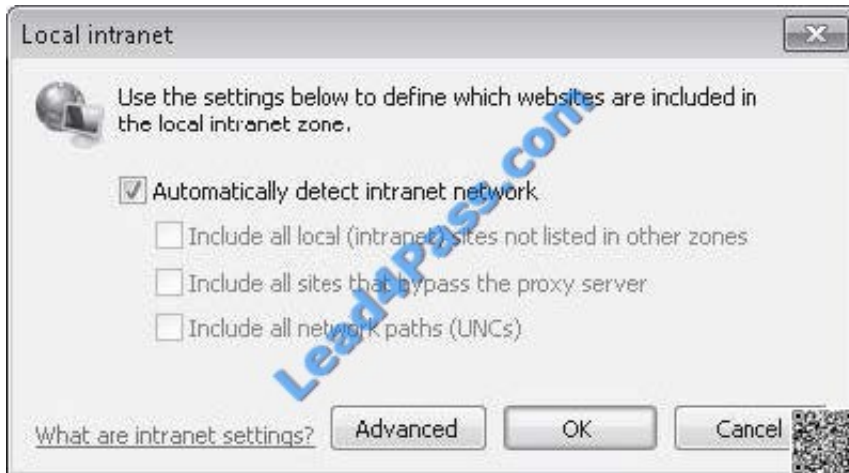
You need to ensure that you are automatically authenticated when you connect to the Web site.

What should you do?

- A. Create a complex password for your user account.
- B. Open Credential Manager and modify your credentials.
- C. Add the URL of the Web site to the Trusted sites zone.
- D. Add the URL of the Web site to the Local intranet zone.

Correct Answer: D

Local Intranet Sites in the Local Intranet zone are computers on your organizational intranet. Internet Explorer can be configured to detect intranet sites automatically. It is also possible to add Web sites to this zone by clicking the Advanced button on the Local Intranet sites dialog box, as shown in the figure. The default security level of this zone is Medium-Low. Protected Mode is not enabled by default for sites in this zone.



Security settings are configured primarily by assigning sites to zones. Sites that require elevated privileges should be assigned to the Trusted Sites zone. Sites that are on the intranet are automatically assigned to the Local Intranet zone, though this may require manual configuration in some circumstances. All other sites are assigned to the Internet zone. The Restricted Sites zone is used only for Web sites that may present security risks but must be visited.

QUESTION 3

You work in an international company which is named Wiikigo. Before entering this company, you have two years of experience in the IT field, as well as experience implementing and administering any Windows client operating system in a networked environment. You are professional in installing, upgrading and migrating to Windows 7, deploying Windows 7, and configuring Hardware and Applications and son on. You use a computer that runs Windows 7. Now your company assigns a task to you. You are asked to prevent users from copying unencrypted files to removable drives.

What action should you perform?

- A. The Trusted Platform Module (TPM) settings should be modified from a local Group Policy.
- B. TPM should be initialized from the Trusted Platform Module (TPM) snap-in.
- C. The BitLocker Drive Encryption settings should be modified from Control Panel.
- D. The BitLocker Drive Encryption settings should be modified from a local Group Policy.

Correct Answer: D

QUESTION 4

You capture a Windows Image (.wim) file from a reference computer.

You want to use Windows Deployment Services (WDS) in an unattended mode to deploy the image file to target desktops.

You need to encrypt an administrator account password in the answer file used for the image deployment.



What should you do? (To answer, move the appropriate actions from the list of actions to the answer area and arrange them in the correct order.)

Select and Place:

Actions

- Open the answer file.
- Unmount the image file.
- Build an update package.
- Set the option to Hide Sensitive Data.
- Apply update package to the image file.
- Launch Windows System Image Manager.
- Launch DISM.exe and mount the WIM file.
- Run the ImageX tool and create a configuration file.

Answer Area

Correct Answer:

Actions

- | |
|--|
| |
| Unmount the image file. |
| Build an update package. |
| |
| Apply update package to the image file. |
| |
| Launch DISM.exe and mount the WIM file. |
| Run the ImageX tool and create a configuration file. |

Answer Area

Launch Windows System Image Manager.
Open the answer file.
Set the option to Hide Sensitive Data.

QUESTION 5

You have a computer named Computer1 that runs Windows 7.

Computer1 has a shared printer.



You need to configure Computer1 so that only Administrators are authorized to shut down the computer.

What should you do?

- A. From User Accounts, modify the user profiles settings.
- B. From User Accounts, modify the User Account Control (UAC) settings.
- C. From the local computer policy, modify the Security Options.
- D. From the local computer policy, modify the User Rights Assignment.

Correct Answer: D

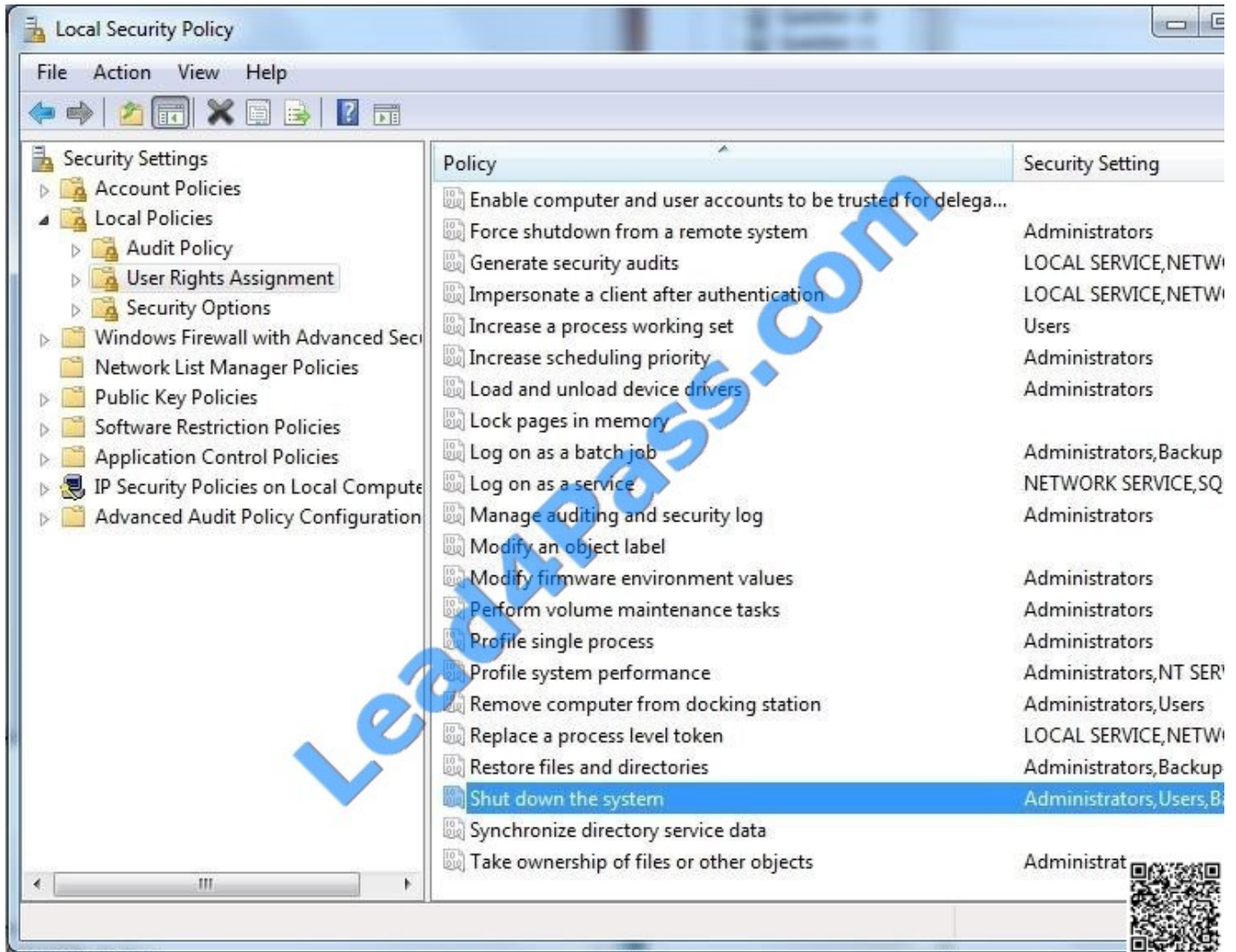
Shut down the system

Computer Configuration\Windows Settings\Security Settings\Local Policies\User Rights Assignment

Description

Determines which users logged on locally to the computer can shut down the operating system using the Shut Down command.

This user right is defined in the Default Domain Controller Group Policy object (GPO) and in the local security policy of workstations and servers.



[70-680 PDF Dumps](#)

[70-680 VCE Dumps](#)

[70-680 Practice Test](#)



To Read the [Whole Q&As](#), please purchase the [Complete Version](#) from [Our website](#).

Try our product !

100% Guaranteed Success

100% Money Back Guarantee

365 Days Free Update

Instant Download After Purchase

24x7 Customer Support

Average 99.9% Success Rate

More than 800,000 Satisfied Customers Worldwide

Multi-Platform capabilities - [Windows](#), [Mac](#), [Android](#), [iPhone](#), [iPod](#), [iPad](#), [Kindle](#)

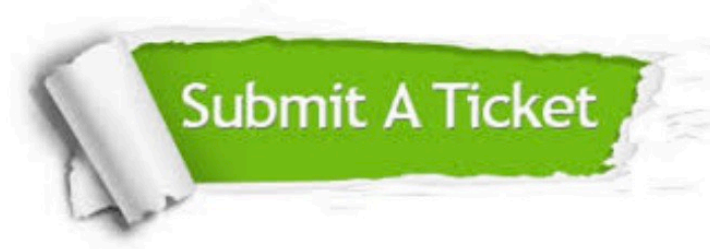
We provide exam PDF and VCE of Cisco, Microsoft, IBM, CompTIA, Oracle and other IT Certifications. You can view Vendor list of All Certification Exams offered:

<https://www.lead4pass.com/allproducts>

Need Help

Please provide as much detail as possible so we can best assist you.

To update a previously submitted ticket:



 <p>One Year Free Update Free update is available within One Year after your purchase. After One Year, you will get 50% discounts for updating. And we are proud to boast a 24/7 efficient Customer Support system via Email.</p>	 <p>Money Back Guarantee To ensure that you are spending on quality products, we provide 100% money back guarantee for 30 days from the date of purchase.</p>	 <p>Security & Privacy We respect customer privacy. We use McAfee's security service to provide you with utmost security for your personal information & peace of mind.</p>
---	---	--

Any charges made through this site will appear as Global Simulators Limited.

All trademarks are the property of their respective owners.

Copyright © lead4pass, All Rights Reserved.