



70-680^{Q&As}

Windows 7 Configuring

Pass Microsoft 70-680 Exam with 100% Guarantee

Free Download Real Questions & Answers **PDF** and **VCE** file from:

<https://www.lead4pass.com/70-680.html>

100% Passing Guarantee
100% Money Back Assurance

Following Questions and Answers are all new published by Microsoft
Official Exam Center

-  **Instant Download** After Purchase
-  **100% Money Back** Guarantee
-  **365 Days** Free Update
-  **800,000+** Satisfied Customers





QUESTION 1

Your company has a server named Server1 that runs Windows Server 2008. Server1 is a Windows Server Update Services (WSUS) server. You have a computer named Computer1 that runs Windows 7.

Computer1 is configured to obtain updates from Server1.

You open the WSUS snap-in on Server1 and discover that Computer1 does not appear.

You need to ensure that Computer1 appears in the WSUS snap-in.

What should you do?

- A. On Server1, open Windows Update then select Check for updates.
- B. On Server1, run Wsusutil.exe and specify the /import parameter.
- C. On Computer1, open Windows Update and then select Change settings.
- D. On Computer1, run Wuauclt.exe and specify the /detectnow parameter.

Correct Answer: D

wuauclt.exe

The wuauclt utility allows you some control over the functioning of the Windows Update Agent.

It is updated as part of Windows Update.

Detectnow Option

Because waiting for detection to start can be a time-consuming process, an option has been added to allow you to initiate detection right away. On one of the computers with the new Automatic Update client installed, run the following

command at the command prompt:

```
wuauclt.exe /detectnow
```

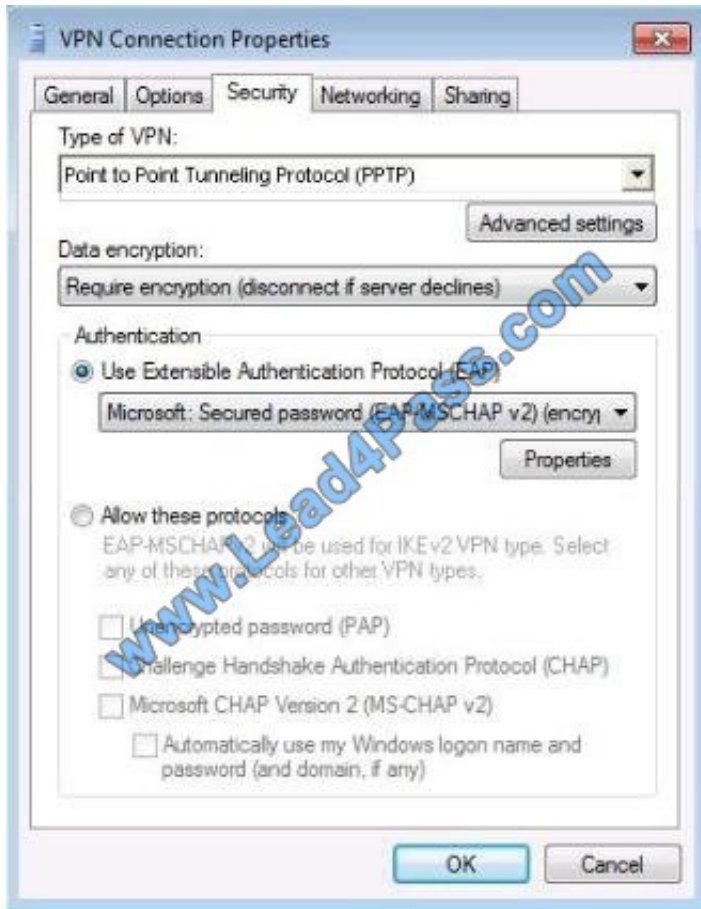
QUESTION 2

A company has client computers that run Windows 7. You set up a virtual private network (VPN) infrastructure that uses a preshared key for authentication.

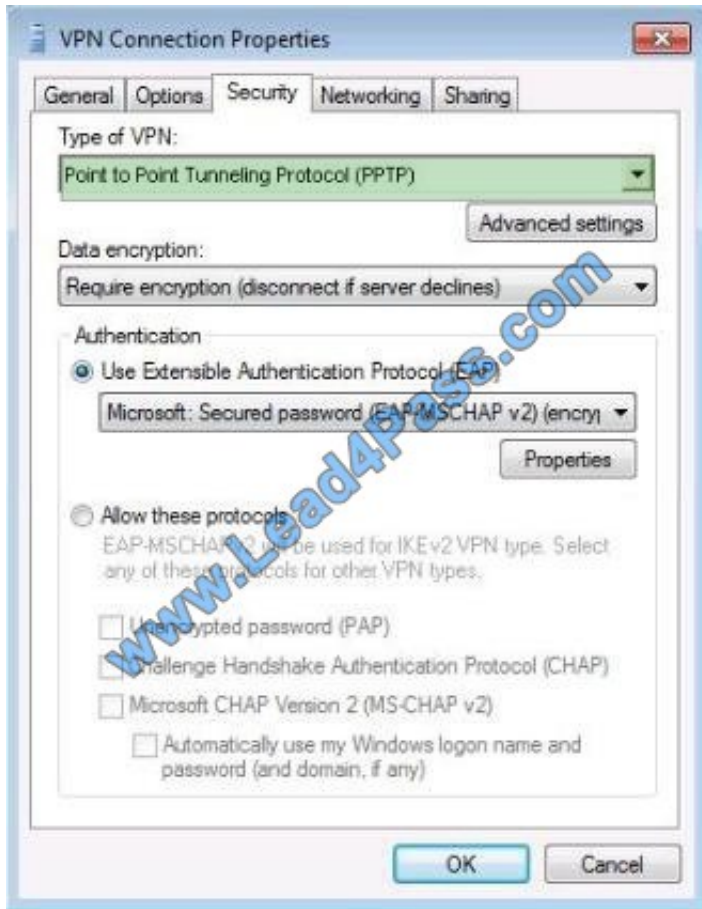
You need to create the VPN connection on the client computers.

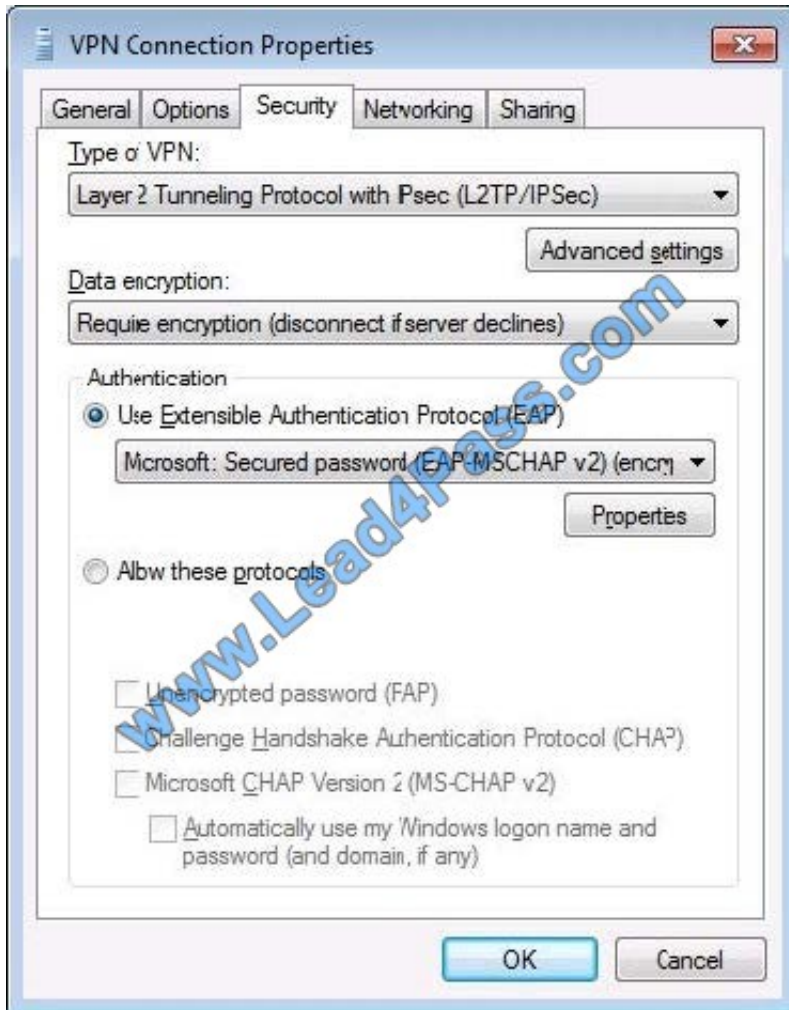
Which setting should you choose? (To answer, select the appropriate setting in the work area.)

Hot Area:

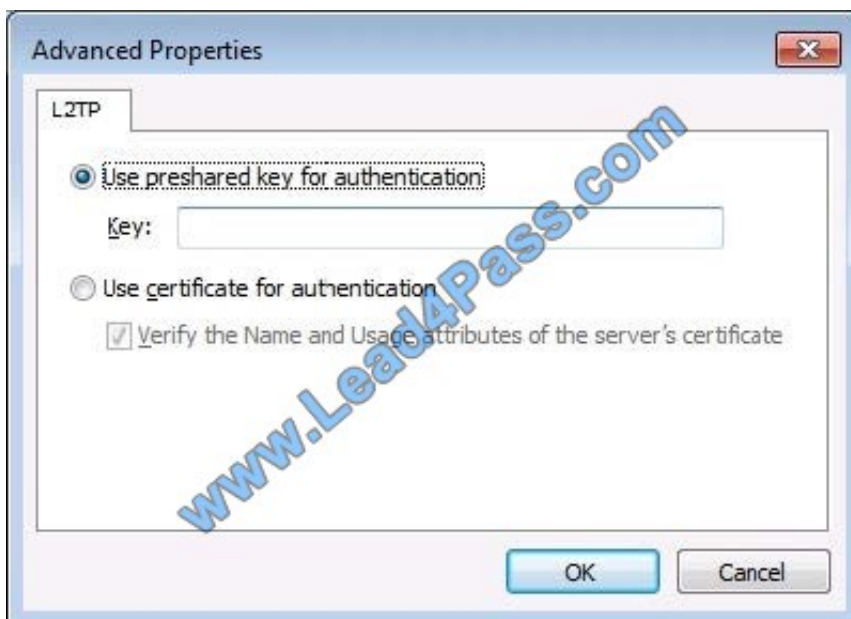


Correct Answer:





You can enter the preshared key under the Advanced Settings button.





QUESTION 3

Your network consists of an Active Directory domain and 100 computers that run Windows 7.

The domain contains a logon script named logon.cmd.

You plan to deploy a new application named app1.msi by using the logon script. App1.msi is stored in \\server1\share1.

You need to modify the logon script to deploy the application.

What should you include in the logon script?

- A. Sbdinst.exe -u \\server1\share1\app1.msi -q
- B. Msinfo32.exe \\server1\share1\app1.msi
- C. Pkgmgr.exe /ip /m:\\server1\share1\app1.msi
- D. Msiexec.exe /i \\server1\share1\app1.msi /quiet

Correct Answer: D

Msiexec

Provides the means to install, modify, and perform operations on Windows Installer from the command line.

To install or configure a product Syntax

```
msiexec /i {package|ProductCode}
```

/i : Installs or configures a product.

NOT Msinfo32

Displays a comprehensive view of your hardware, system components, and software environment.

QUESTION 4

You plan to install Windows 7 on a computer that contains a single hard disk drive. The hard disk drive is connected to a RAID controller.

During the installation, you discover that the Windows 7 installation media does not include the files required to install the RAID controller.

You need ensure that you can install Windows 7 on the hard disk drive.

What should you do?

- A. Insert the Windows installation media and press F8 during the computer's power-on self test (POST).
- B. Insert the Windows installation media and press F6 during the computer's power-on self test (POST).
- C. Start the computer from the Windows installation media. From the Install Windows dialog box, click Load Driver.
- D. Start the computer from the Windows installation media. From the Install Windows dialog box, click Drive options



(advanced).

Correct Answer: C

If your computer has special disk drive hardware, such as a redundant array of independent disks (RAID) array, it may be necessary to use the Load Driver option.

It is necessary to use this option only if the disk that you want to install Windows on is not shown as a possible install location. If your disk is shown as an available option, Windows 7 has already loaded the appropriate drivers. Once you select the location where you want to install Windows 7, the Windows 7 installation process begins.

QUESTION 5

You need to configure a computer to encrypt all inbound connections by using IPsec.

What should you do?

- A. From Network and Sharing Center, click Connect to a network.
- B. From Network and Sharing Center, click Set up a new connection or network.
- C. From Windows Firewall with Advanced Security, click Inbound Rules and then click New Rule.
- D. From Windows Firewall with Advanced Security, click Connection Security Rules and then click New Rule.

Correct Answer: D

Connection Security Rules Connection security rules are a special type of rule that deal with authenticated and encrypted traffic. You can use connection security rules to manage how communication occurs between different hosts on the network. You use the New Connection Security Rule Wizard, to create connection security rules. Connections can be authenticated using the Kerberos V5 protocol requiring a domain computer and user account or a domain computer account. If you select advanced properties, connections can be authenticated using NTLMv2, computer certificates from a particular certificate authority (CA) or using a pre-shared key.

Connection Security Rules and IPsec policies The relationship between connection security rules and IPsec policies is similar to the relationship between AppLocker and Software Restriction Policies. Both sets of rules do similar things, but the ones that you use depend on the operating systems used by the client computers in your organization. All editions of Windows 7 and Windows Vista support connection security rules, but Windows XP does not.

[70-680 VCE Dumps](#)

[70-680 Practice Test](#)

[70-680 Exam Questions](#)



To Read the [Whole Q&As](#), please purchase the [Complete Version](#) from [Our website](#).

Try our product !

100% Guaranteed Success

100% Money Back Guarantee

365 Days Free Update

Instant Download After Purchase

24x7 Customer Support

Average 99.9% Success Rate

More than 800,000 Satisfied Customers Worldwide

Multi-Platform capabilities - [Windows](#), [Mac](#), [Android](#), [iPhone](#), [iPod](#), [iPad](#), [Kindle](#)

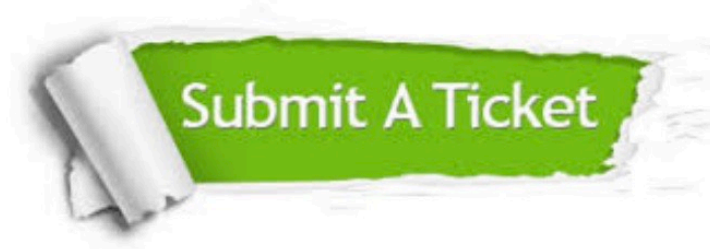
We provide exam PDF and VCE of Cisco, Microsoft, IBM, CompTIA, Oracle and other IT Certifications. You can view Vendor list of All Certification Exams offered:

<https://www.lead4pass.com/allproducts>

Need Help

Please provide as much detail as possible so we can best assist you.

To update a previously submitted ticket:



 <p>One Year Free Update Free update is available within One Year after your purchase. After One Year, you will get 50% discounts for updating. And we are proud to boast a 24/7 efficient Customer Support system via Email.</p>	 <p>Money Back Guarantee To ensure that you are spending on quality products, we provide 100% money back guarantee for 30 days from the date of purchase.</p>	 <p>Security & Privacy We respect customer privacy. We use McAfee's security service to provide you with utmost security for your personal information & peace of mind.</p>
---	---	--

Any charges made through this site will appear as Global Simulators Limited.

All trademarks are the property of their respective owners.

Copyright © lead4pass, All Rights Reserved.