



70-649^{Q&As}

TS: Upgrading Your MCSE on Windows Server 2003 to Windows Server 2008, Technology Specialist

Pass Microsoft 70-649 Exam with 100% Guarantee

Free Download Real Questions & Answers **PDF** and **VCE** file from:

<https://www.lead4pass.com/70-649.html>

100% Passing Guarantee
100% Money Back Assurance

Following Questions and Answers are all new published by Microsoft Official Exam Center

-  **Instant Download** After Purchase
-  **100% Money Back** Guarantee
-  **365 Days** Free Update
-  **800,000+** Satisfied Customers





QUESTION 1

Your network contains two servers named Server1 and Server2 that run Windows Server 2008 R2. Server1 and Server2 are configured as a failover cluster named Cluster1.

Cluster1 hosts a clustered application named App1. App1 has a physical disk resource named Cluster Disk 1.

You need to use the Chkdsk tool to fix all of the errors on Cluster Disk 1.

What should you do first?

- A. From Disk Management, take Cluster Disk 1 offline.
- B. From Disk Management, disable write caching for Cluster Disk 1.
- C. From Failover Cluster Manager, modify the dependencies for Cluster Disk 1.
- D. From Failover Cluster Manager, enable maintenance mode for Cluster Disk 1.

Correct Answer: D

Run a Disk Maintenance Tool Such as Chkdsk on a Clustered Disk To run a disk maintenance tool such as Chkdsk on a disk or volume that is configured as part of a clustered service, application, or virtual machine, you must use

maintenance mode. When maintenance mode is on, the disk maintenance tool can finish running without triggering a failover. If you have a disk witness, you cannot use maintenance mode for that disk.

Maintenance mode works somewhat differently on a volume in Cluster Shared Volumes than it does on other disks in cluster storage, as described in Additional considerations, later in this topic.

Membership in the local Administrators group, or equivalent, is the minimum required to complete this procedure

To run a disk maintenance tool such as Chkdsk on a clustered disk

1.

In the Failover Cluster Manager snap-in, if the cluster is not displayed, in the console tree, right-click

Failover Cluster Manager, click Manage a Cluster, and select or specify the cluster you want.

2.

If the console tree is collapsed, expand the tree under the cluster that uses the disk on which you want run a disk maintenance tool.

3.

In the console tree, click Storage.

4.

In the center pane, click the disk on which you want to run the disk maintenance tool.

5.



Under Actions, click More Actions, and then click the appropriate command:

If the disk you clicked is under Cluster Shared Volumes and contains multiple volumes, click Maintenance, and then click the command for the appropriate volume. If prompted, confirm your action.

If the disk you clicked is under Cluster Shared Volumes and contains one volume, click Maintenance, and then click Turn on maintenance mode for this volume . If prompted, confirm your action.

If the disk you clicked is not under Cluster Shared Volumes, click Turn on maintenance mode for this disk.

6.

Run the disk maintenance tool on the disk or volume. When maintenance mode is on, the disk maintenance tool can finish running without triggering a failover.

7.

When the disk maintenance tool finishes running, with the disk still selected, under Actions, click More Actions, and then click the appropriate command:

If the disk you clicked is under Cluster Shared Volumes and contains multiple volumes, click Maintenance, and then click the command for the appropriate volume. If the disk you clicked is under Cluster Shared Volumes and contains one

volume, click Maintenance, and then click Turn off maintenance mode for this volume. If the disk you clicked is not under Cluster Shared Volumes, click Turn off maintenance mode for this disk.

Source: <http://technet.microsoft.com/en-us/library/cc772587.aspx>

QUESTION 2

Your network contains three servers named ADFS1, ADFS2, and ADFS3 that run Windows Server 2008 R2. ADFS1 has the Active Directory Federation Services (AD FS) Federation Service role service installed.

You plan to deploy AD FS 2.0 on ADFS2 and ADFS3.

You need to export the token-signing certificate from ADFS1, and then import the certificate to ADFS2 and ADFS3.

In which format should you export the certificate?

- A. Cryptographic Message Syntax Standard PKCS #7 (.p7b)
- B. DER encoded binary X.509 (.cer)
- C. Base-64 encoded X.S09 (.cer)
- D. Personal Information Exchange PKCS #12 (.pfx)

Correct Answer: D

QUESTION 3

Your network contains an Active Directory domain named fabrikam.com. The domain contains a Web server named



Web1 that runs Windows Server 2008 R2.

You create a new site named Site1.

You need to prevent Web1 from accepting HTTP URLs that are longer than 1,024 bytes.

Which feature should you configure?

- A. Authorization Rules
- B. Connection Strings
- C. HTTP Response Headers
- D. Request Filtering

Correct Answer: D

QUESTION 4

Your network contains a server named Server1 that runs Windows Server 2008 R2.

You need to ensure that an administrator is notified by e-mail if the Event Viewer logs any error.

What should you do from the Event Viewer console?

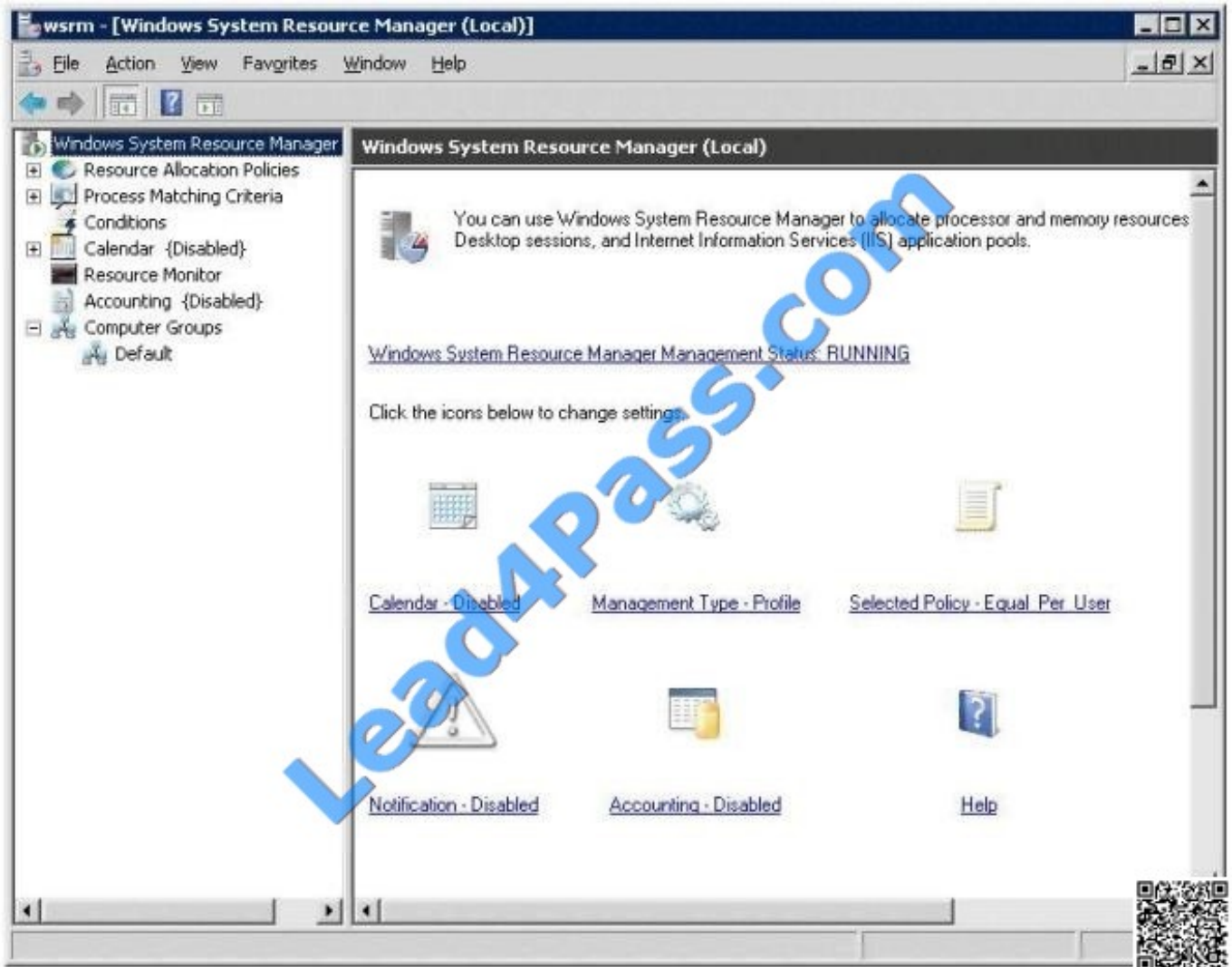
- A. From the System log, select an Error event, and then click the Attach Task to This Event action.
- B. Create a custom view, and then click the Attach Task to This Custom view action.
- C. Create a custom view, and then click the Filter Current Custom view action.
- D. From the System log, click the Filter Current Log action.

Correct Answer: B

QUESTION 5

Your network contains a server named Server1 that runs Windows Server 2008 R2. Server 1 has the Remote Desktop Session Host (RD Session Host) role service installed.

On server1, you install and configure the Windows System Resource Manager (WSRM) feature as shown in the exhibit. (Click the Exhibit button.)



You need to ensure that WSRM enforces the allocation of CPU capacity between users. What should you do?

- A. Enable Accounting.
- B. Change the Management type to Manage.
- C. Add Server1 to the Default computer group.
- D. Change the resource allocation policy to Equal_per_process.

Correct Answer: B

[70-649 PDF Dumps](#)

[70-649 Practice Test](#)

[70-649 Brindumps](#)



To Read the [Whole Q&As](#), please purchase the [Complete Version](#) from [Our website](#).

Try our product !

100% Guaranteed Success

100% Money Back Guarantee

365 Days Free Update

Instant Download After Purchase

24x7 Customer Support

Average 99.9% Success Rate

More than 800,000 Satisfied Customers Worldwide

Multi-Platform capabilities - [Windows](#), [Mac](#), [Android](#), [iPhone](#), [iPod](#), [iPad](#), [Kindle](#)

We provide exam PDF and VCE of Cisco, Microsoft, IBM, CompTIA, Oracle and other IT Certifications. You can view Vendor list of All Certification Exams offered:

<https://www.lead4pass.com/allproducts>

Need Help

Please provide as much detail as possible so we can best assist you.

To update a previously submitted ticket:



 <p>One Year Free Update Free update is available within One Year after your purchase. After One Year, you will get 50% discounts for updating. And we are proud to boast a 24/7 efficient Customer Support system via Email.</p>	 <p>Money Back Guarantee To ensure that you are spending on quality products, we provide 100% money back guarantee for 30 days from the date of purchase.</p>	 <p>Security & Privacy We respect customer privacy. We use McAfee's security service to provide you with utmost security for your personal information & peace of mind.</p>
---	---	--

Any charges made through this site will appear as Global Simulators Limited.

All trademarks are the property of their respective owners.

Copyright © lead4pass, All Rights Reserved.