



70-649^{Q&As}

TS: Upgrading Your MCSE on Windows Server 2003 to Windows Server 2008, Technology Specialist

Pass Microsoft 70-649 Exam with 100% Guarantee

Free Download Real Questions & Answers **PDF** and **VCE** file from:

<https://www.lead4pass.com/70-649.html>

100% Passing Guarantee
100% Money Back Assurance

Following Questions and Answers are all new published by Microsoft Official Exam Center

-  **Instant Download** After Purchase
-  **100% Money Back** Guarantee
-  **365 Days** Free Update
-  **800,000+** Satisfied Customers





QUESTION 1

You install a read-only domain controller (RODC) named RODC1.

You need to ensure that a user named User1 can administer RODC1. The solution must minimize the number of permissions assigned to User1.

Which tool should you use?

- A. Active Directory Administrative Center
- B. Active Directory Users and Computers
- C. Dsadd
- D. Dsmgmt

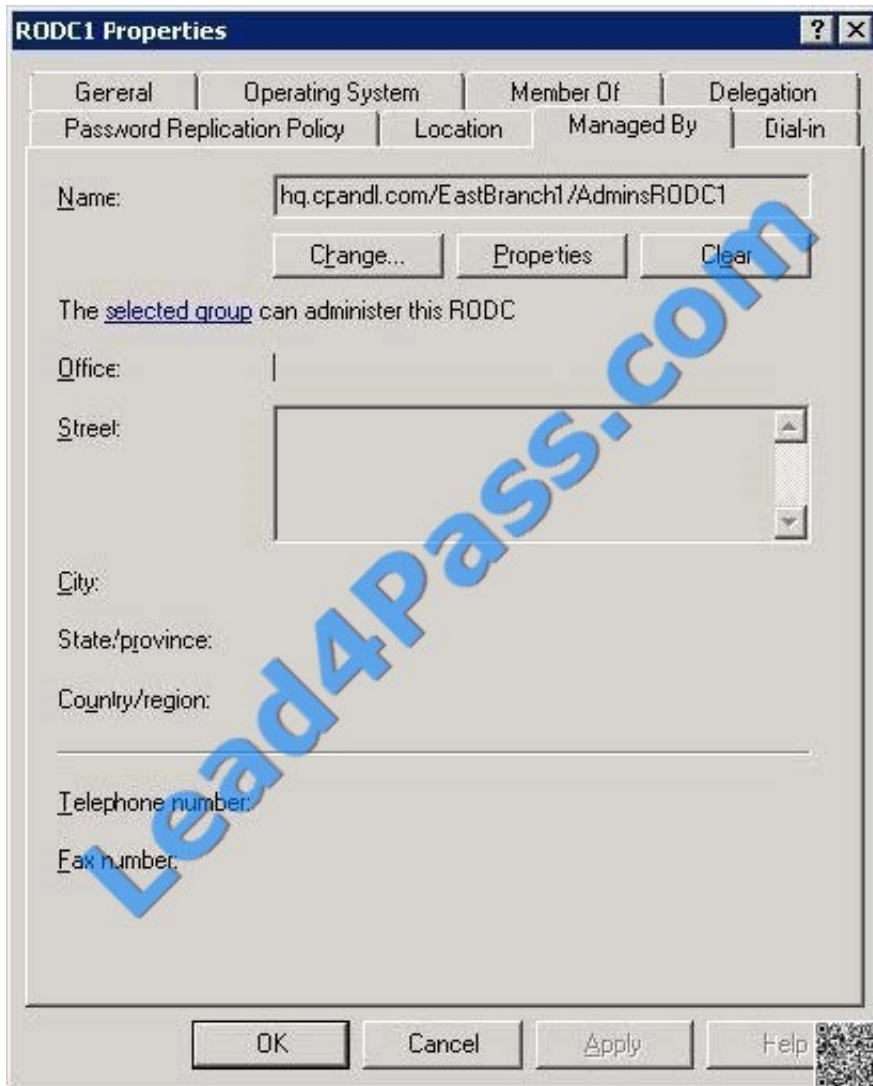
Correct Answer: B

The old answer was: Dsmgmt There are a couple of ways to achieve this and two of them are mentioned in the listed answers, Active Directory Users and Computers and Dsmgmt. Referenced below are two Technet articles. The first explains the different ways to implement Administrator Role Separation on an RODC, and why the use of Active Directory Users is recommended over Dsmgmt. The second reference is now a kind of bonus, explaining how to use dsmgmt for this task.

Reference 1: <http://technet.microsoft.com/en-us/library/cc755310.aspx> Delegating local administration of an RODC Administrator Role Separation (ARS) is an RODC feature that you can use to delegate the ability to administer an RODC to a user or a security group. When you delegate the ability to log on to an RODC to a user or a security group, the user or group is not added the Domain Admins group and therefore does not have additional rights to perform directory service operations. Steps and best practices for setting up ARS

You can specify a delegated RODC administrator during an RODC installation or after it. To specify the delegated RODC administrator after installation, you can use either of the following options:

Modify the Managed By tab of the RODC account properties in the Active Directory Users and Computers snap-in, as shown in the following figure. You can click Change to change which security principal is the delegated RODC administrator. You can choose only one security principal. Specify a security group rather than an individual user so you can control RODC administration permissions most efficiently. This method changes the managedBy attribute of the computer object that corresponds to the RODC to the SID of the security principal that you specify. This is the recommended way to specify the delegated RODC administrator account because the information is stored in AD DS, where it can be centrally managed by domain administrators.



Use the `ntdsutil local roles` command or the `dsmanagement local roles` command. You can use this command to view, add, or remove members from the Administrators group and other built-in groups on the RODC. [See also the second reference

for more information on how to use `dsmanagement`.]

Using `ntdsutil` or `dsmanagement` to specify the delegated RODC administrator account is not recommended because the information is stored only locally on the RODC. Therefore, when you use `ntdsutil local roles` to delegate an administrator for the

RODC, the account that you specify does not appear on the Managed By tab of the RODC account properties. As a result, using the Active Directory Users and Computers snap-in or a similar tool will not reveal that the RODC has a

delegated administrator. In addition, if you demote an RODC, any security principal that you specified by using `ntdsutil local roles` remains stored in the registry of the server. This can be a security concern if you demote an RODC in one

domain and then promote it to be an RODC again in a different domain. In that case, the original security principal would have administrative rights on the new RODC in the different domain.

Reference 2:

<http://technet.microsoft.com/en-us/library/cc732301.aspx> Administrator Role Separation Configuration



This section provides procedures for creating a local administrator role for an RODC and for adding a user to that role.

To configure Administrator Role Separation for an RODC

1.

Click Start, click Run, type cmd, and then press ENTER.

2.

At the command prompt, type dsmsgmt.exe, and then press ENTER.

3.

At the DSMGMT prompt, type local roles, and then press ENTER.

4.

For a list of valid parameters, type ?, and then press ENTER. By default, no local administrator role is defined on the RODC after AD DS installation. To add the local administrator role, use the Add parameter.

5.

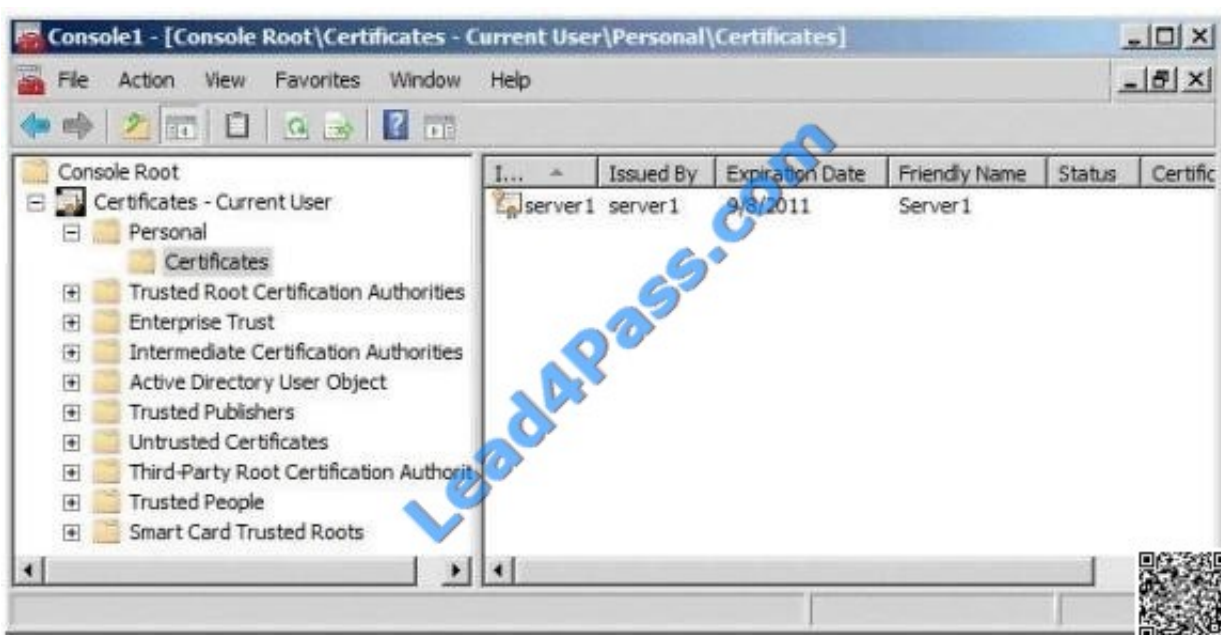
Type add \ For example, type add CONTOSO\testuser administrators

QUESTION 2

Your network contains a server named Server1 that runs Windows Server 2008 R2. Server1 is configured as an Active Directory Federation Services (AD FS) 2.0 standalone server.

You plan to add a new token-signing certificate to Server1.

You import the certificate to the server as shown in the exhibit. (Click the Exhibit button.)





When you run the Add Token-Signing Certificate wizard, you discover that the new certificate is unavailable.

You need to ensure that you can use the new certificate for AD FS.

What should you do?

- A. From the properties of the certificate, modify the Certificate purposes setting.
- B. From the properties of the certificate, modify the Certificate Policy OIDs setting.
- C. Import the certificate to the local computer personal certificate store.
- D. Import the certificate to the AD FS 2.0 windows Service personal certificate store.

Correct Answer: C

QUESTION 3

Your network contains an Active Directory forest. The forest contains a member server named Server1 that runs Windows Server 2008 R2.

You need to configure Server1 to provide central authentication of dial-up, VPN, and wireless connections to the network.

Which server role, role service or feature should you install?

- A. Windows System Resource Manager (WSRM)
- B. Health Registration Authority (HRA)
- C. Services for Network File System (NFS)
- D. Simple TCP/IP Services
- E. Network Load Balancing (NLB)
- F. Windows Internal Database
- G. Connection Manager Administration Kit (CMAK)
- H. File Server Resource Manager (FSRM)
- I. Windows Server Update Services (WSUS)
- J. Group Policy Management
- K. Network Policy Server (NPS)
- L. Wireless LAN Service
- M. Routing and Remote Access service (RRAS)

Correct Answer: K

With NPS Installed Roles Create Connection request policies allow you to designate whether connection requests are



processed locally or forwarded to remote RADIUS servers. For NAP VPN or 802.1X, you must configure PEAP authentication in connection request policy.

QUESTION 4

You deploy a new Active Directory Federation Services (AD FS) federation server.

You request new certificates for the AD FS federation server.

You need to ensure that the AD FS federation server can use the new certificates.

To which certificate store should you import the certificates?

- A. Computer
- B. IIS Admin Service service account
- C. Local Administrator
- D. World Wide Web Publishing Service service account

Correct Answer: A

QUESTION 5

Your network contains a domain controller named DC1 and a member server named Server1.

You save a copy of the Active Directory Web Services (ADWS) event log on Dc1. You copy the log to Server1.

You open the event log file on Server1 and discover that the event description information is unavailable.

You need to ensure that the event log file displays the same information when the file is open on Server1 and on Dc1.

What should you do on Server1?

- A. Copy the LocaleMetaData folder from DC1.
- B. Copy the SYSVOL folder from DC1.
- C. Create a custom view.
- D. Import a custom view.

Correct Answer: A



To Read the [Whole Q&As](#), please purchase the [Complete Version](#) from [Our website](#).

Try our product !

100% Guaranteed Success

100% Money Back Guarantee

365 Days Free Update

Instant Download After Purchase

24x7 Customer Support

Average 99.9% Success Rate

More than 800,000 Satisfied Customers Worldwide

Multi-Platform capabilities - [Windows](#), [Mac](#), [Android](#), [iPhone](#), [iPod](#), [iPad](#), [Kindle](#)

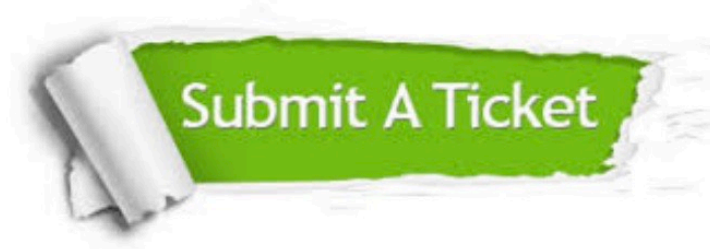
We provide exam PDF and VCE of Cisco, Microsoft, IBM, CompTIA, Oracle and other IT Certifications. You can view Vendor list of All Certification Exams offered:

<https://www.lead4pass.com/allproducts>

Need Help

Please provide as much detail as possible so we can best assist you.

To update a previously submitted ticket:



 <p>One Year Free Update Free update is available within One Year after your purchase. After One Year, you will get 50% discounts for updating. And we are proud to boast a 24/7 efficient Customer Support system via Email.</p>	 <p>Money Back Guarantee To ensure that you are spending on quality products, we provide 100% money back guarantee for 30 days from the date of purchase.</p>	 <p>Security & Privacy We respect customer privacy. We use McAfee's security service to provide you with utmost security for your personal information & peace of mind.</p>
---	---	--

Any charges made through this site will appear as Global Simulators Limited.

All trademarks are the property of their respective owners.

Copyright © lead4pass, All Rights Reserved.