



# 70-649<sup>Q&As</sup>

TS: Upgrading Your MCSE on Windows Server 2003 to Windows Server 2008, Technology Specialist

## Pass Microsoft 70-649 Exam with 100% Guarantee

Free Download Real Questions & Answers **PDF** and **VCE** file from:

<https://www.lead4pass.com/70-649.html>

100% Passing Guarantee  
100% Money Back Assurance

Following Questions and Answers are all new published by Microsoft Official Exam Center

-  **Instant Download** After Purchase
-  **100% Money Back** Guarantee
-  **365 Days** Free Update
-  **800,000+** Satisfied Customers





### QUESTION 1

Your network contains a server that runs Windows Server 2008 R2.

You plan to create a custom script.

You need to ensure that each time the script runs, an entry is added to the Application event log.

Which tool should you use?

- A. Eventcreate
- B. Eventvwr
- C. Wecutil
- D. Wevtutil

Correct Answer: A

You can create custom events in an event log by using the Eventcreate utility. This can be useful as a diagnostic tool in scripts when you record an error or event directly into the logs without using VBScript or another language to log the event. <http://support.microsoft.com/kb/324145>

---

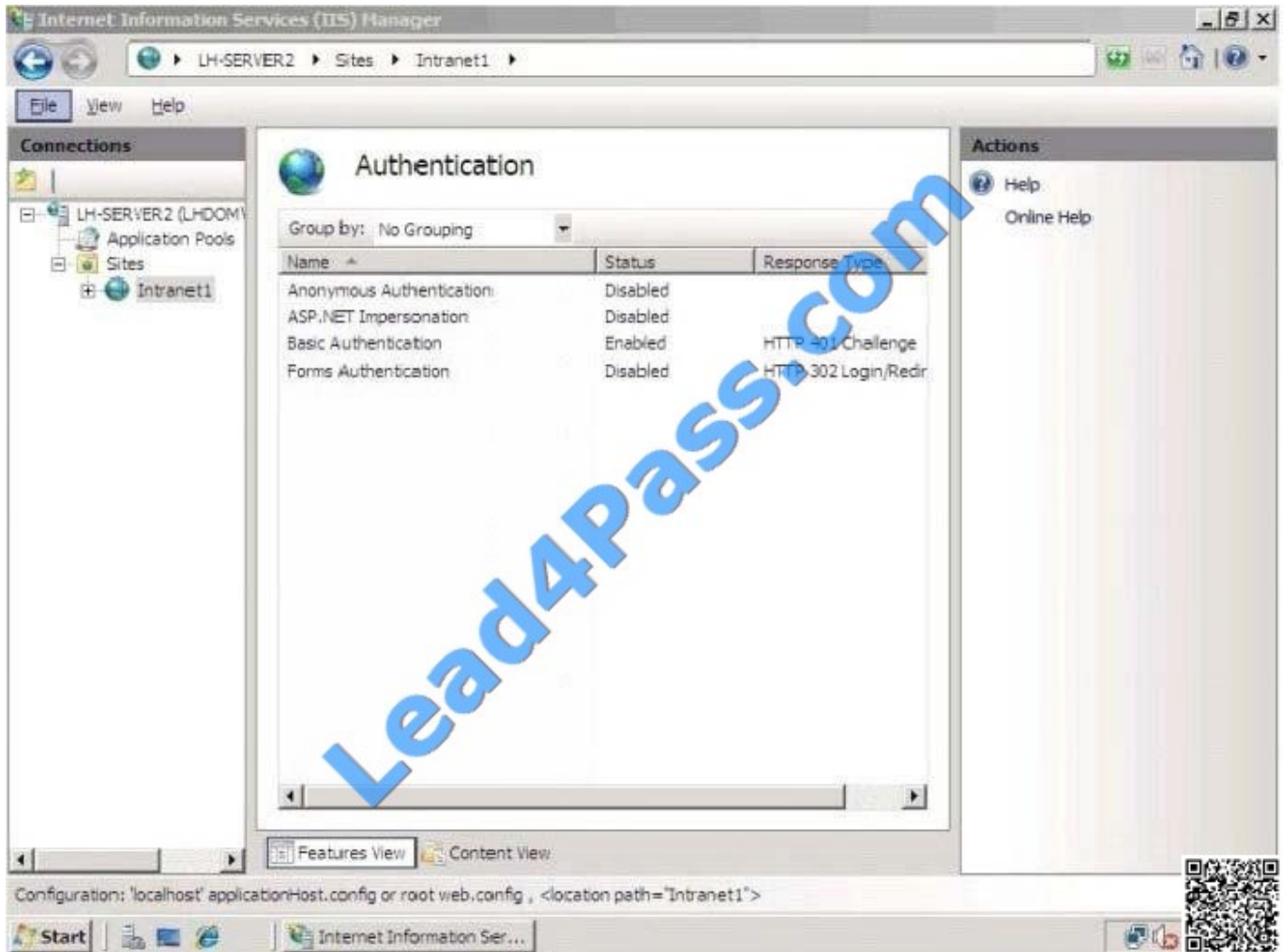
### QUESTION 2

You manage a member server that runs Windows Server 2008 R2.

The server has the Web Server (IIS) server role installed. The Web server hosts a Web site named Intranet1.

Only internal Active Directory user accounts have access to the Web site.

The authentication settings for Intranet1 are configured as shown in the exhibit.



You need to ensure that users authenticate to the Web site by using only the:

Microsoft Challenge Handshake Authentication Protocol version 2 (MS-CHAPv2) encrypted Active Directory credentials.

Which two actions should you perform? (Each correct answer presents part of the solution.

Choose two.)

- A. Add the Digest Authentication role service and the URL Authorization role service to the server.
- B. Add the Windows Authentication role service to IIS. Configure the Windows Authentication setting to Enabled in the Intranet1 properties.
- C. Configure the Basic Authentication setting to Disabled in the Intranet1 properties.
- D. Configure the Default domain field for the Basic Authentication settings on Intranet1 by adding the name of the Active Directory domain.
- E. Configure the Basic Authentication setting to Disabled and the Anonymous Authentication setting to Enabled in the Intranet1 properties.

Correct Answer: BC



### QUESTION 3

Your network contains a server named Server1 that runs Windows Server 2008 R2. The network for Server1 is configured as shown in the table.

Network interface	Network configuration	Connects to
LAN1	IP address: 10.1.2.1 Subnet mask: 255.255.255.0 Gateway:	Internal network
Internet1	IP address: 131.107.1.12 Subnet mask: 255.255.255.0 Gateway: 131.107.1.1	Internet
Internet2	IP address: 131.107.1.13 Subnet mask: 255.255.255.0 Gateway:	Internet

You plan to deploy DirectAccess on Server1.

You need to configure the network interfaces on Server1 to support DirectAccess.

What should you do?

- A. Remove the IP address of 131.107.1.13 from Internet2, and then add the address to LAN1.
- B. Add the IP address of 10.1.2.2 to LAN1.
- C. Remove the IP of address 131.107.1.13 from Internet2, and then add the address to Internet1.
- D. Add the default gateway of 131.107.1.1 to Internet2.

Correct Answer: C

### QUESTION 4

Your network contains a Windows Server Update Services (WSUS) server. A Group Policy object (GPO) configures all WSUS client computers to detect updates hourly and install updates weekly.

You download a critical update.

You need to ensure that the WSUS client computers install the critical update during the next detection interval.

What should you do?

- A. From the client computers, run `gpupdate.exe /force`.
- B. From the client computers, run `wuauclt.exe /force`.
- C. From the server, configure the Synchronization Schedule options.
- D. From the server, configure the deadline settings.



Correct Answer: D

Ignore maintenance windows and install immediately at deadline:

Specifies whether the software updates in the deployment are installed at the deadline regardless of a configured maintenance window.

By default, this setting is not enabled and is available only when there is a deadline configured for the deployment.

This setting is beneficial when there are software updates that must be installed on client computers as soon as possible, such as the updates in an expedited deployment. This setting is available on the Schedule page of the Deploy Software

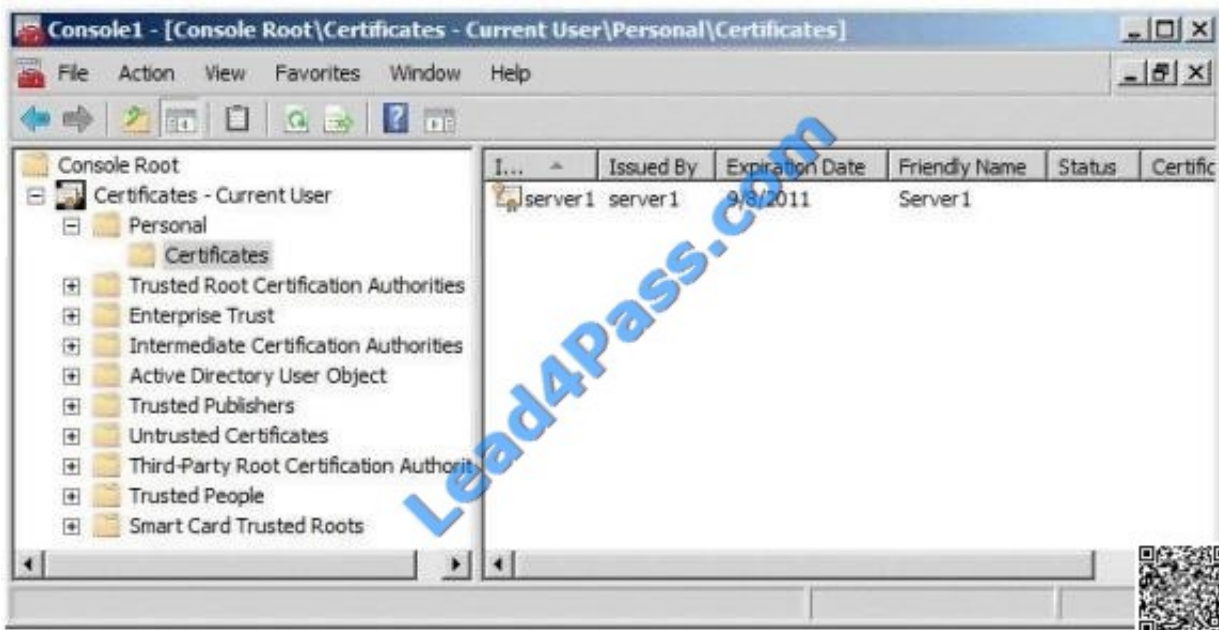
Updates Wizard.

### QUESTION 5

Your network contains a server named Server1 that runs Windows Server 2008 R2. Server1 is configured as an Active Directory Federation Services (AD FS) 2.0 standalone server.

You plan to add a new token-signing certificate to Server1.

You import the certificate to the server as shown in the exhibit. (Click the Exhibit button.)



When you run the Add Token-Signing Certificate wizard, you discover that the new certificate is unavailable.

You need to ensure that you can use the new certificate for AD FS.

What should you do?

- A. From the properties of the certificate, modify the Certificate purposes setting.
- B. From the properties of the certificate, modify the Certificate Policy OIDs setting.



C. Import the certificate to the local computer personal certificate store.

D. Import the certificate to the AD FS 2.0 windows Service personal certificate store.

Correct Answer: C

[70-649 PDF Dumps](#)

[70-649 Study Guide](#)

[70-649 Exam Questions](#)



To Read the [Whole Q&As](#), please purchase the [Complete Version](#) from [Our website](#).

## Try our product !

100% Guaranteed Success

100% Money Back Guarantee

365 Days Free Update

Instant Download After Purchase

24x7 Customer Support

Average 99.9% Success Rate

More than 800,000 Satisfied Customers Worldwide

Multi-Platform capabilities - [Windows](#), [Mac](#), [Android](#), [iPhone](#), [iPod](#), [iPad](#), [Kindle](#)

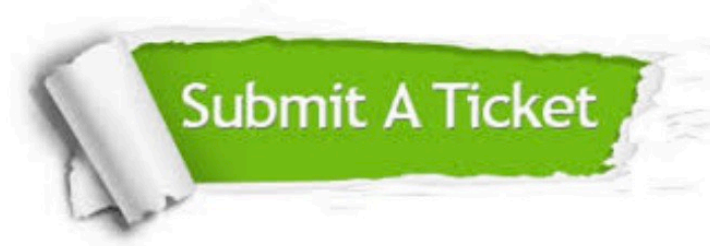
We provide exam PDF and VCE of Cisco, Microsoft, IBM, CompTIA, Oracle and other IT Certifications. You can view Vendor list of All Certification Exams offered:

<https://www.lead4pass.com/allproducts>

## Need Help

Please provide as much detail as possible so we can best assist you.

To update a previously submitted ticket:



 <p><b>One Year Free Update</b> Free update is available within One Year after your purchase. After One Year, you will get 50% discounts for updating. And we are proud to boast a 24/7 efficient Customer Support system via Email.</p>	 <p><b>Money Back Guarantee</b> To ensure that you are spending on quality products, we provide 100% money back guarantee for 30 days from the date of purchase.</p>	 <p><b>Security &amp; Privacy</b> We respect customer privacy. We use McAfee's security service to provide you with utmost security for your personal information &amp; peace of mind.</p>
---	---	--

Any charges made through this site will appear as Global Simulators Limited.

All trademarks are the property of their respective owners.

Copyright © lead4pass, All Rights Reserved.