



70-647^{Q&As}

Windows Server 2008,Enterprise Administrator

Pass Microsoft 70-647 Exam with 100% Guarantee

Free Download Real Questions & Answers **PDF** and **VCE** file from:

<https://www.lead4pass.com/70-647.html>

100% Passing Guarantee
100% Money Back Assurance

Following Questions and Answers are all new published by Microsoft
Official Exam Center

-  **Instant Download** After Purchase
-  **100% Money Back** Guarantee
-  **365 Days** Free Update
-  **800,000+** Satisfied Customers





QUESTION 1

You are evaluating the deployment of a domain controller in the planned satellite office. You need to recommend changes to the physical topology of Active Directory that meet the company's technical requirements. What should you include in the recommendation?

- A. A global catalog server in the satellite office
- B. A read-only domain controller (RODC) in the main office
- C. A site and a subnet object in the satellite office
- D. Active Directory Lightweight Directory Services (AD LDS) in the branch office

Correct Answer: C

Technical Requirement

All users in the planned satellite office must always attempt to authenticate to their local domain controller first.

Physical Location

Woodgrove Bank has a main office and 10 branch offices. Each branch office has a WAN link to the main office.

Existing Environment

Active Directory Environment

The Woodgrove Bank network contains an Active Directory forest named woodgrovebank.com. The forest contains multiple domains and one Active Directory site. The functional level of the forest is Windows Server 2003.

Each office has domain controllers for the forest root domain. Each office also contains domain controllers for at least one other domain.

The Woodgrove Bank network contains the following applications and servers:

A line-of-business application named App1.

Server that run either Windows Server 2003 or Windows Server 2008.

Domain controllers in the main office run Windows Server 2003.

An enterprise root certification authority (CA) that runs Windows Server 2003. The certificate revocation list (CRL) is published to an internal Web site.

All client computers in contoso.com run a 64-bit version of Windows 7.



QUESTION 2

You need to recommend a solution for App1 that supports the company's planned changes. What should you include in the recommendation?

- A. Microsoft Application Virtualization (App-V)
- B. Microsoft Enterprise Desktop Visualization (MED-V)



C. Remote Desktop IP Visualization

D. RemoteApp

Correct Answer: B

PLANNED CHANGES

Northwind Traders plans to implement the following changes:

- Implement a remote access solution.
- Upgrade all of the client computers in the shipping department to Windows 7 Enterprise.
- Deny the users in east.northwindtraders.com access to the shared resources in contoso.com.
- Provide the users in the northwindtraders.com domain access to a shared folder in contoso.com.
- Deploy test computers that run either Windows 7 or Windows Server 2008 R2 in a lab environment.
- Deny the users in contoso.com access to the shared resources in both northwindtraders.com and east.northwindtraders.com.
- Evaluate whether to migrate all of the users in contoso.com to east.northwindtraders.com.

EXISTING ENVIRONMENT

Northwind Traders has five departments, including a shipping department. All of the client computers in the shipping department run Windows XP Service Pack 3 (SP3). All of the users in the shipping department run a line-of-business application named App1 that only runs on Windows XP.

TECHNICAL REQUIREMENTS

Northwind Traders must meet the following technical requirements:

- Centrally manage all client computers.
- Only open ports 80 and 443 on the external firewall.
- Ensure that only smart card authentication is used for remote access.
- Reduce the security risk of having a domain controller in an unsecure location.
- Minimize the amount of Active Directory replication traffic between the offices.
- Minimize the amount of time it takes to restore deleted Active Directory objects.
- Perform all operations by using an account that has the minimum number of rights.
- Ensure that App1 is available to users who are either connected to or disconnected from the network.
- Prevent Active Directory attributes that contain sensitive information from being stored in the branch o
- Ensure that when client computers authenticate, they always attempt to connect to a domain controller respective local office first.



<http://technet.microsoft.com/en-us/library/ee872305.aspx>

QUESTION 3

You are planning to deploy the new network in Munich.

Office location	Number of users	WAN bandwidth	Client computer operating system
Los Angeles	10,000	1 Gbps	Windows 7
Munich	1,000	10 Mbps	Windows 7
Jakarta	2,500	3 Mbps	Windows XP SP3

Which subnet mask should you use?

A. 2001:DB8:0:C000: /64

B. 2001:DB8:0: C000: /48



- C. 2001:DB8:0:C000: /24
- D. 200.1.8.0/128
- E. 2001:DB8:0: C000:: /16
- F. 200.1.8.0/56
- G. 2001:DB8:0: C000:: /8

Correct Answer: A

QUESTION 4

You network consists of one Active Directory forest named Contoso.com The relevant portion of the network is configured as shown in the exhibit. (Click the Exhibit button.)

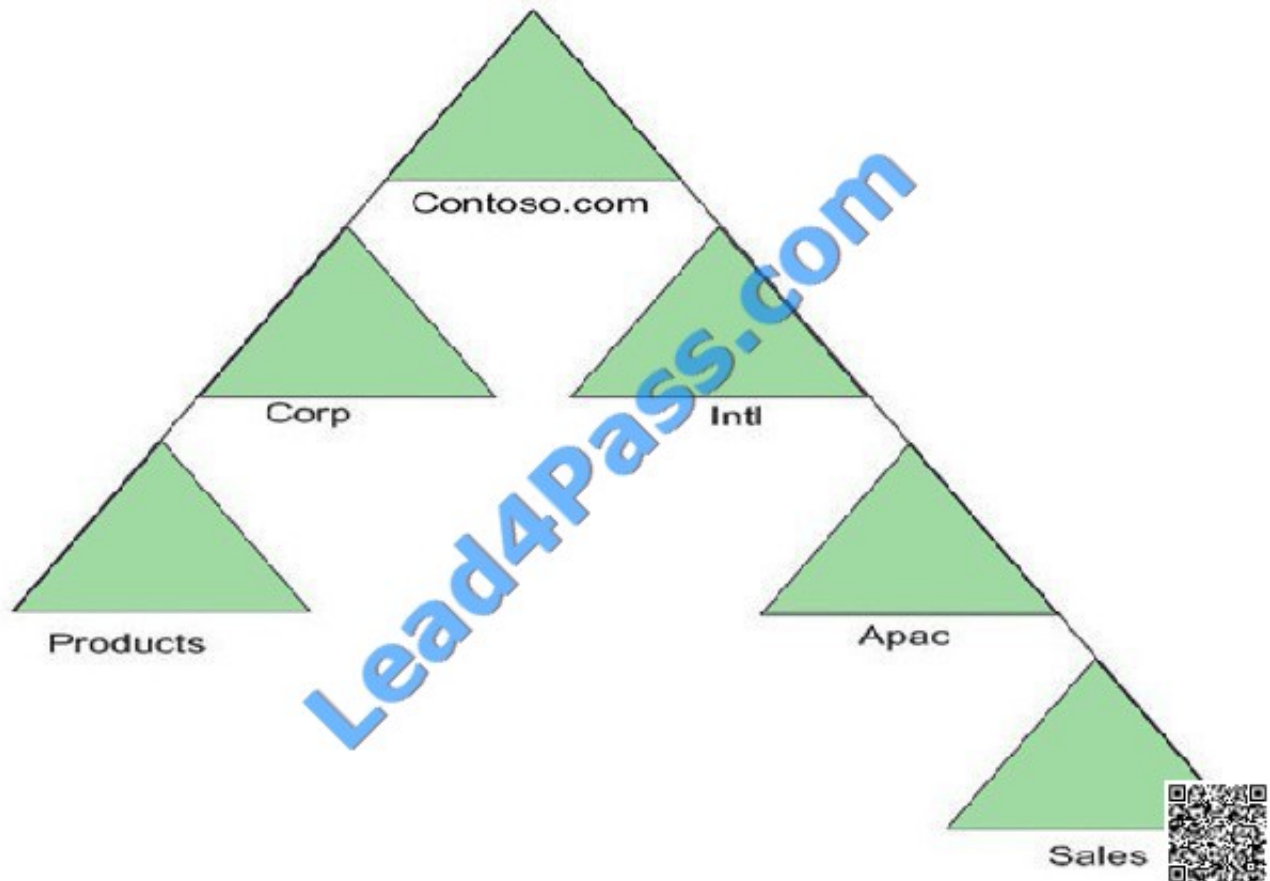
Users in the sales.apac.intl.Contoso.com domain frequently access resources on the products.corp.Contoso.com domain.

Users reports slow access times when users access resources on the products.corp.Contoso.com domain.

You need to minimize access times when users access resources on the products.corp.Contoso.com domain.

What should you do?

Exhibit:



- A. Create a realm trust.
- B. Create a shortcut trust.
- C. Enable Universal Group Membership Caching for all Active Directory sites.
- D. Create a new DNS application partition. Add the Contoso.com zone to the application partition.

Correct Answer: B

QUESTION 5

You need to recommend a solution for managing Group Policy that meets the company's technical requirements. What should you include in the recommendation?

- A. Group Policy Modeling
- B. Microsoft Advanced Group Policy Management (AGPM)
- C. Microsoft Baseline Security Analyzer (MBSA)
- D. Resultant Set of Policy (RSOP)

Correct Answer: B



Technical Requirements

All of the users in Contoso must be able to enroll for certificates by using the Public Key Infrastructure (PKI) of Humongous Insurance.

Humongous Insurance must meet the following requirements for managing Group Policy objects (GPOs):

- _ Minimize administrative effort
- _ Support offline editing of the GPOs.
- _ Retain multiple versions of the GPOs.



[Latest 70-647 Dumps](#)

[70-647 PDF Dumps](#)

[70-647 Braindumps](#)



To Read the [Whole Q&As](#), please purchase the [Complete Version](#) from [Our website](#).

Try our product !

100% Guaranteed Success

100% Money Back Guarantee

365 Days Free Update

Instant Download After Purchase

24x7 Customer Support

Average 99.9% Success Rate

More than 800,000 Satisfied Customers Worldwide

Multi-Platform capabilities - [Windows](#), [Mac](#), [Android](#), [iPhone](#), [iPod](#), [iPad](#), [Kindle](#)

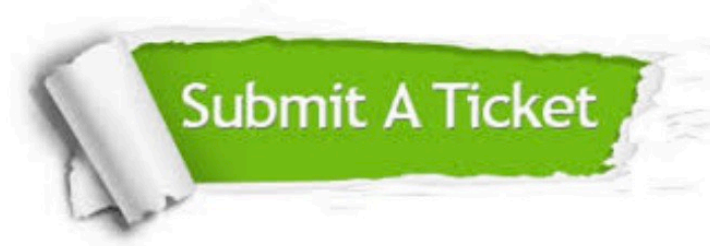
We provide exam PDF and VCE of Cisco, Microsoft, IBM, CompTIA, Oracle and other IT Certifications. You can view Vendor list of All Certification Exams offered:

<https://www.lead4pass.com/allproducts>

Need Help

Please provide as much detail as possible so we can best assist you.

To update a previously submitted ticket:



 <p>One Year Free Update Free update is available within One Year after your purchase. After One Year, you will get 50% discounts for updating. And we are proud to boast a 24/7 efficient Customer Support system via Email.</p>	 <p>Money Back Guarantee To ensure that you are spending on quality products, we provide 100% money back guarantee for 30 days from the date of purchase.</p>	 <p>Security & Privacy We respect customer privacy. We use McAfee's security service to provide you with utmost security for your personal information & peace of mind.</p>
---	---	--

Any charges made through this site will appear as Global Simulators Limited.

All trademarks are the property of their respective owners.

Copyright © lead4pass, All Rights Reserved.