



70-643^{Q&As}

Windows Server 2008 Applications Infrastructure, Configuring

Pass Microsoft 70-643 Exam with 100% Guarantee

Free Download Real Questions & Answers **PDF** and **VCE** file from:

<https://www.lead4pass.com/70-643.html>

100% Passing Guarantee
100% Money Back Assurance

Following Questions and Answers are all new published by Microsoft
Official Exam Center

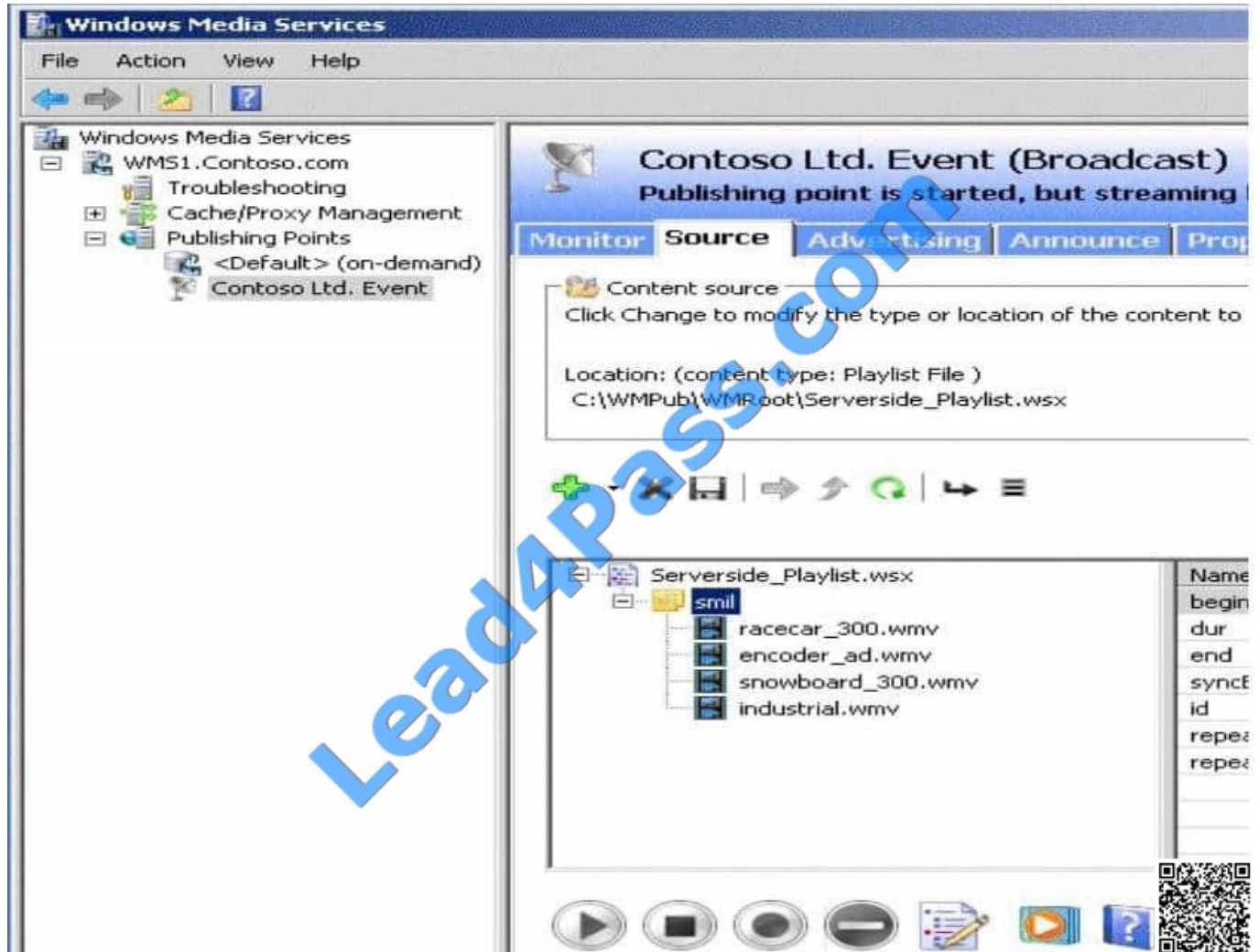
-  **Instant Download** After Purchase
-  **100% Money Back** Guarantee
-  **365 Days** Free Update
-  **800,000+** Satisfied Customers





QUESTION 1

Your network contains a server named WMS1 that has the Streaming Media Services server role installed. You have a publishing point as shown in the exhibit. (Click the Exhibit button.)



You need to ensure that you can modify the content source for the publishing point. What should you do?

- A. Configure stream splitting.
- B. Disconnect all of the connections to the publishing point.
- C. Stop Windows Media Services.
- D. Stop the publishing point.

Correct Answer: D



QUESTION 2

Your network contains three servers that run Windows Server 2008 R2. The servers are configured as shown in the following table.

Server name	Role service	IP address
server1.contoso.com	Remote Desktop Session Host (RD Session Host)	10.0.0.10
server2.contoso.com	Remote Desktop Session Host (RD Session Host)	10.0.0.11
server3.contoso.com	Remote Desktop Connection Broker (RD Connection Broker)	10.0.0.12

Server1 and Server2 are members of an RD Session Host server farm named farm1.contoso.com.

You configure the RD Connection Broker role service on Server3 to support farm1.contoso.com.

You need to create DNS records to support RD Connection Broker load balancing.

Which record or records should you create for farm1.contoso.com?

- A. One Alias (CNAME) record
- B. One Host (AAAA) record
- C. Two Host (A) records
- D. Two service location (SRV) records

Correct Answer: C

Configure DNS for RD Connection Broker Load Balancing To load balance sessions in an RD Session Host server farm, you can use the RD Connection Broker Load Balancing feature together with Domain Name System (DNS) round robin. To configure DNS, you must create a DNS host resource record for each RD Session Host server in the farm that maps the RD Session Host server's IP address to the RD Session Host server farm name in DNS. To add DNS entries for each RD Session Host server in the farm

1.

Open the DNS snap-in. To open the DNS snap-in, log on to a computer where the DNS snap-in has been installed, click Start, point to Administrative Tools, and then click DNS.

2.

Expand the server name, expand Forward Lookup Zones, and then expand the domain name.

3.

Right-click the appropriate zone, and then click New Host (A or AAAA).

4.

In the Name (uses parent domain name if blank) box, type the RD Session Host server farm name.



5.

The farm name is the virtual name that clients will use to connect to the RD Session Host server farm. Do not use the name of an existing server. For management purposes, we recommend that you use the same farm name that you specified when you configured the RD Session Host servers to join a farm in RD Connection Broker.

6.

In the IP address box, type the IP address of an RD Session Host server in the farm.

7.

Click Add Host.

Repeat steps three through six for each RD Session Host server in the farm.

Source: <http://technet.microsoft.com/en-us/library/cc772506.aspx>

QUESTION 3

Your network contains a Web server that runs Windows Server 2008 R2.

You create an IIS Manager user account for a user named User1.

When you attempt to delegate permissions for the Default Web Site to User1, you receive the following dialog box.



You need to ensure that you can delegate permissions for the Default Web Site to User1. Which feature should you modify?

- A. Feature Delegation
- B. IIS Manager Permissions
- C. IIS Manager Users
- D. Management Service

Correct Answer: D



Management Service

Use this feature to configure how clients connect to this server by using remote connections in IIS Manager.

Enable remote connections

Identity Credentials

Windows credentials only

Windows credentials or IIS Manager credentials



Allow both Windows credentials AND IIS Manager credentials:



QUESTION 4

Your network contains a server named Server1 that runs Windows Server 2008 R2.

You add a new 3-terabyte hard disk to Server1.

You need to create a 3-terabyte volume.

What should you do first?

- A. Disable write caching for the hard disk.
- B. Initialize the disk as a Master Boot Record (MBR) disk.
- C. Initialize the disk as a GUID Partition Table (GPT) disk.
- D. Disable direct memory access (DMA) for the hard disk controller.

Correct Answer: C

A GPT disk uses the GUID partition table (GPT) disk partitioning system. A GPT disk offers these benefits: Allows up to 128 primary partitions. Master Boot Record (MBR) disks can support up to four primary partitions and an additional 124 partitions inside extended partitions. Allows a much larger partition size--greater than 2 terabytes (TB), which is the limit for MBR disks.

Provides greater reliability because of replication and cyclical redundancy check (CRC) protection of the partition table



can be used as a storage volume on all x64-based platforms, including platforms running Windows XP Professional x64 Edition. Starting with Windows Server 2003 SP1, GPT disks can also be used as a storage volume on x86-based Windows platforms. Can be used as a boot volume on x64-based editions of Windows 7, Windows Vista, and Windows Server 2008. Starting with Windows Server 2003 SP1, GPT disks can also be used as a boot volume on Itanium-based systems.

Note: Windows only supports booting from a GPT disk on systems that contain Unified Extensible Firmware Interface (UEFI) boot firmware.

Source: <http://www.microsoft.com/whdc/device/storage/GPT-on-x64.mspx>

QUESTION 5

Your network contains three servers that run Windows Server 2008 R2. The servers are configured as shown in the following table.

Server name	Role services
Server1	Remote Desktop Licensing (RD Licensing)
Server2	Remote Desktop Session Host (RD Session Host)
Server3	Remote Desktop Session Host (RD Session Host)

Server1 has Remote Desktop Services Per Device client access licenses (RDS Per Device CALs) installed.

Server2 and Server3 are members of a Remote Desktop Connection Broker (RD Connection Broker) farm.

Four months after Server2 and Server3 are deployed, you discover that users can no longer establish Remote Desktop sessions on Server3.

You verify that Server3 is online and that all required services on Server3 run properly. You verify that the users can establish Remote Desktop sessions on Server2. You need to ensure that the users connecting to the RD Connection

farm can establish sessions on Server3.

What should you do?

- A. On Server3, enable dedicated farm redirection.
- B. On Server3, configure the Remote Desktop licensing settings.
- C. On Server1, install additional RDS Per Device CALs.
- D. On Server1, run the Manage RDS CALs wizard and click the Migrate action.

Correct Answer: B

You must configure RD Licensing correctly in order for your RD Session Host server to accept connections from clients. To allow ample time for you to deploy a license server, Remote Desktop Services provides a licensing grace period for

the RD Session Host server during which no license server is required. During this grace period, an RD Session Host server can accept connections from unlicensed clients without contacting a license server. The grace period begins the first



time the RD Session Host server accepts a client connection.

A permanent RDS CAL is issued by a license server to a client connecting to the RD Session Host server.

The number of days in the grace period is exceeded.

The length of the grace period is based on the operating system running on the RD Session Host server.

The grace periods are as follows:

Source: <http://technet.microsoft.com/en-us/library/cc725933.aspx>

[70-643 VCE Dumps](#)

[70-643 Practice Test](#)

[70-643 Exam Questions](#)



To Read the [Whole Q&As](#), please purchase the [Complete Version](#) from [Our website](#).

Try our product !

100% Guaranteed Success

100% Money Back Guarantee

365 Days Free Update

Instant Download After Purchase

24x7 Customer Support

Average 99.9% Success Rate

More than 800,000 Satisfied Customers Worldwide

Multi-Platform capabilities - [Windows](#), [Mac](#), [Android](#), [iPhone](#), [iPod](#), [iPad](#), [Kindle](#)

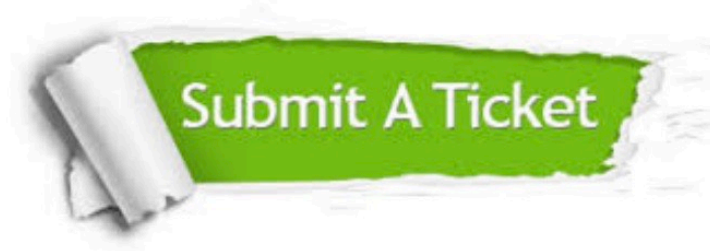
We provide exam PDF and VCE of Cisco, Microsoft, IBM, CompTIA, Oracle and other IT Certifications. You can view Vendor list of All Certification Exams offered:

<https://www.lead4pass.com/allproducts>

Need Help

Please provide as much detail as possible so we can best assist you.

To update a previously submitted ticket:



 <p>One Year Free Update Free update is available within One Year after your purchase. After One Year, you will get 50% discounts for updating. And we are proud to boast a 24/7 efficient Customer Support system via Email.</p>	 <p>Money Back Guarantee To ensure that you are spending on quality products, we provide 100% money back guarantee for 30 days from the date of purchase.</p>	 <p>Security & Privacy We respect customer privacy. We use McAfee's security service to provide you with utmost security for your personal information & peace of mind.</p>
---	---	--

Any charges made through this site will appear as Global Simulators Limited.

All trademarks are the property of their respective owners.

Copyright © lead4pass, All Rights Reserved.