



# 70-642<sup>Q&As</sup>

TS: Windows Server 2008 Network Infrastructure

## Pass Microsoft 70-642 Exam with 100% Guarantee

Free Download Real Questions & Answers **PDF** and **VCE** file from:

<https://www.lead4pass.com/70-642.html>

100% Passing Guarantee  
100% Money Back Assurance

Following Questions and Answers are all new published by Microsoft  
Official Exam Center

-  **Instant Download** After Purchase
-  **100% Money Back** Guarantee
-  **365 Days** Free Update
-  **800,000+** Satisfied Customers





### QUESTION 1

Your network contains a server named Server1 that runs Windows Server 2008 R2. Server1 has the Network\_Policy Server (NPS) role installed.

You need to ensure that the NPS log files on Server1 contain information of client connections.

What should you do?

- A. Enable the Accounting requests settings.
- B. Enable the Authentication requests settings.
- C. Configure the IAS (Legacy) log file format.
- D. Configure the DTS Compliant log file format.

Correct Answer: D

The DTS Compliant log format is the newest one and only its XML have attributes for session duration such as Acct-Session-Time = "The length of time (in seconds) for which the session has been active."

---

### QUESTION 2

Your network contains an Active Directory domain named contoso.com. The network is configured to use ISATAP.

You have a server named Server1 that runs Windows Server 2008 R2. On Server1, you discover that a tunnel adapter named isatap.contoso.com has a Media State of "Media disconnected".

You confirm that Server1 has a valid network connection and can query the DNS server. You need to ensure that the isatap.contoso.com tunnel adapter has an IPv6 address.

What should you do?

- A. Start the IP Helper service.
- B. Start the IPsec Policy Agent service.
- C. Add a new rule to Windows Firewall.
- D. Add an entry for ISATAP to the Hosts file.

Correct Answer: A

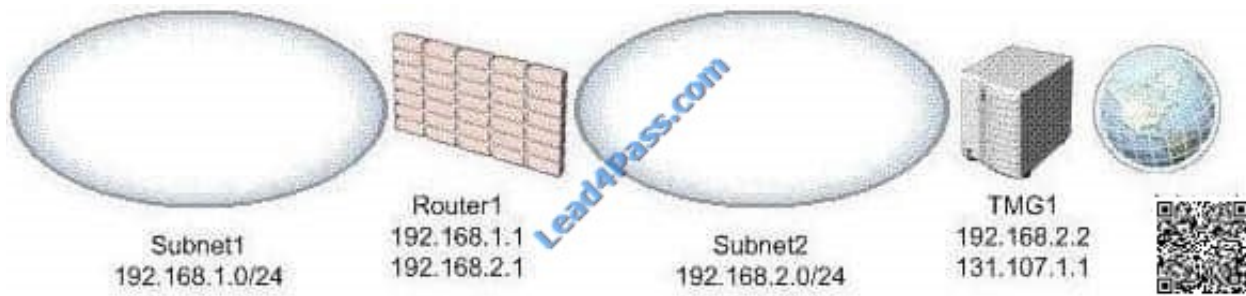
The IP Helper service must be running for IPv6 transition technologies such as ISATAP, Teredo, and 6to4 to function on the computer. This service provides automatic IPv6 connectivity over an IPv4 network, and if the service is stopped, the computer will have only IPv6 connectivity if it is connected to a native IPv6 network. Therefore, if your network is not native IPv6, disabling this service on Windows Server 2008 computers effectively disables IPv6 on them.

---

### QUESTION 3



Your network is configured as shown in the exhibit. (Click the Exhibit button.)



The network contains a server named TMG1. TMG1 runs Microsoft Forefront Threat Management Gateway (TMG) 2010 and has a default gateway of 131.107.1.2. You need to ensure that TMG1 can connect to the Internet and to the client

computers in all of the internal subnets.

What should you do on TMG1?

- A. Run `route -p add 192.168.1.0 netmask 255.255.255.0 192.168.2.1`.
- B. Change the default gateway to 192.168.1.1.
- C. Run `route -p add 192.168.2.0 netmask 255.255.255.0 192.168.1.1`.
- D. Change the default gateway to 192.168.2.1.

Correct Answer: A

For example, to add a static route to the 10.0.0.0 network that uses a subnet mask of 255.0.0.0, a gateway of 192.168.0.1, you type the following at a command prompt: `Route add 10.0.0.0 mask 255.0.0.0 192.168.0.1`  
<http://technet.microsoft.com/en-us/library/cc757323.aspx>

#### QUESTION 4

Your network contains a server named Server1 that runs Windows Server 2008 R2. On Server1, you share a folder named Share1. Users report that when they try to open some of the folders in Share1, they receive an Access is Denied error

message.

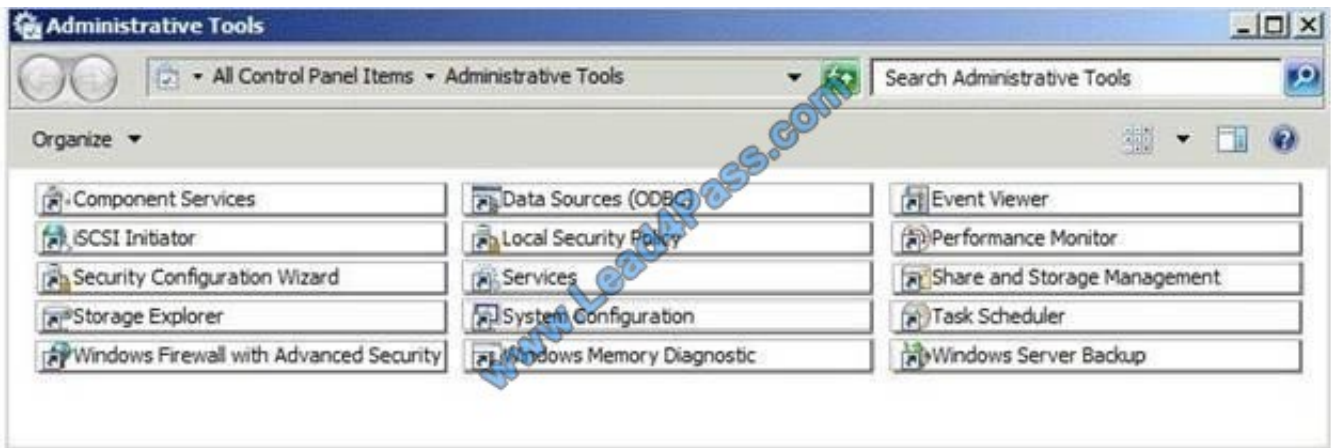
You need to ensure that when the users connect to Share1, they only see the files and the folders to which they are assigned permissions.

Which administrative tool should you use to achieve this task?

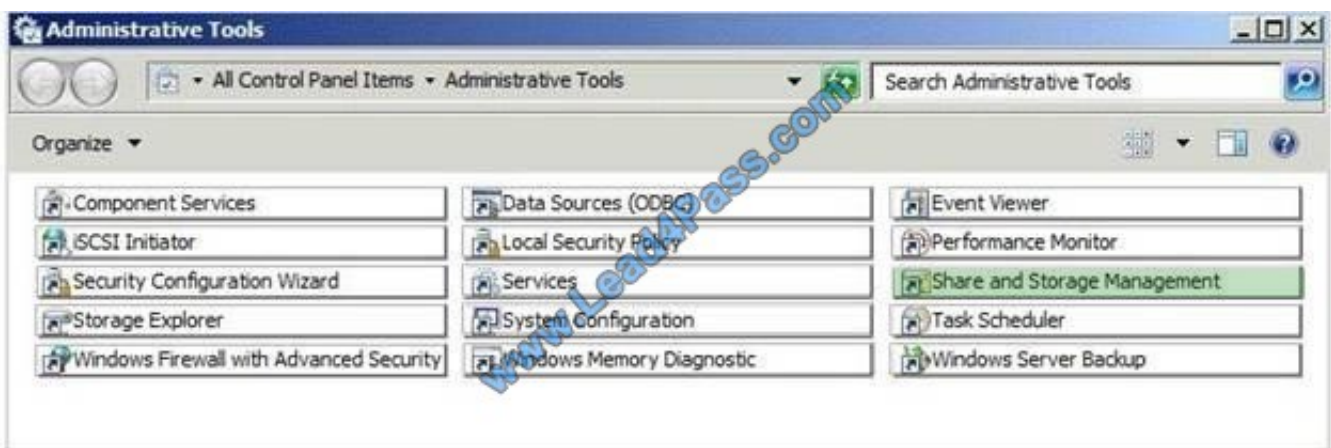


To answer, select the appropriate tool in the answer area.

Hot Area:



Correct Answer:



[http://technet.microsoft.com/fr-fr/library/dd772681\(v=ws.10\).aspx](http://technet.microsoft.com/fr-fr/library/dd772681(v=ws.10).aspx) Access-based enumeration displays only the files and folders that a user has permissions to access. Access-based enumeration is now included in the Windows Server 2008 operating system, and you can enable it by using Share and Storage Management.



## QUESTION 5

Your network contains an Active Directory domain. The domain contains a member server named Server1.

Server1 has a single network connection.

You need to log every attempt to connect to Server1 on a restricted port.

What should you do?

- A. Change the settings of the private firewall profile.
- B. Change the settings of the domain firewall profile.
- C. Modify the properties of the inbound firewall rules.
- D. Modify the properties of the outbound firewall rules.

Correct Answer: B

As per the URL, [http://technet.microsoft.com/enus/library/cc947815\(v=ws.10\).aspx#bkmk\\_ToenableWindowsFirewallandconfigurethedefaultbehavior](http://technet.microsoft.com/enus/library/cc947815(v=ws.10).aspx#bkmk_ToenableWindowsFirewallandconfigurethedefaultbehavior)

The attached questions answer should be Option B, not option C, as logging cannot be set at inbound or outbound level. Only @ Profile level, since the member server is part of the domain.

1.

Open the Group Policy Management Console to Windows Firewall with Advanced Security.

2.

In the details pane, in the Overview section, click Windows Firewall Properties.

3.

For each network location type (Domain, Private, Public), perform the following steps. a. Click the tab that corresponds to the network location type.

b.

Under Logging, click Customize.

c.

The default path for the log is %windir%\system32\logfiles\firewall\pfirewall.log. If you want to change this, clear the Not configured check box and type the path to the new location, or click Browse to select a file location.

Important

The location you specify must have permissions assigned that permit the Windows Firewall service to write to the log file.

d.

The default maximum file size for the log is 4,096 kilobytes (KB). If you want to change this, clear the Not configured check box, and type in the new size in KB, or use the up and down arrows to select a size. The file will not grow beyond



this size; when the limit is reached, old log entries are deleted to make room for the newly created ones.

e.

No logging occurs until you set one of following two options:

To create a log entry when Windows Firewall drops an incoming network packet, change Log dropped packets to Yes.

To create a log entry when Windows Firewall allows an inbound connection, change Log successful connections to Yes.

f.

Click OK twice.

[Latest 70-642 Dumps](#)

[70-642 PDF Dumps](#)

[70-642 Exam Questions](#)



To Read the [Whole Q&As](#), please purchase the [Complete Version](#) from [Our website](#).

## Try our product !

100% Guaranteed Success

100% Money Back Guarantee

365 Days Free Update

Instant Download After Purchase

24x7 Customer Support

Average 99.9% Success Rate

More than 800,000 Satisfied Customers Worldwide

Multi-Platform capabilities - [Windows](#), [Mac](#), [Android](#), [iPhone](#), [iPod](#), [iPad](#), [Kindle](#)

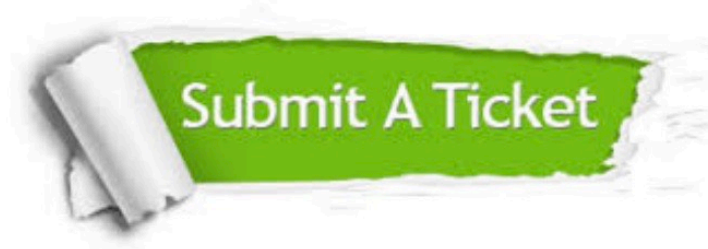
We provide exam PDF and VCE of Cisco, Microsoft, IBM, CompTIA, Oracle and other IT Certifications. You can view Vendor list of All Certification Exams offered:

<https://www.lead4pass.com/allproducts>

## Need Help

Please provide as much detail as possible so we can best assist you.

To update a previously submitted ticket:



 <p><b>One Year Free Update</b> Free update is available within One Year after your purchase. After One Year, you will get 50% discounts for updating. And we are proud to boast a 24/7 efficient Customer Support system via Email.</p>	 <p><b>Money Back Guarantee</b> To ensure that you are spending on quality products, we provide 100% money back guarantee for 30 days from the date of purchase.</p>	 <p><b>Security &amp; Privacy</b> We respect customer privacy. We use McAfee's security service to provide you with utmost security for your personal information &amp; peace of mind.</p>
---	---	--

Any charges made through this site will appear as Global Simulators Limited.

All trademarks are the property of their respective owners.

Copyright © lead4pass, All Rights Reserved.