



# 70-534<sup>Q&As</sup>

Architecting Microsoft Azure Solutions 2015

## Pass Microsoft 70-534 Exam with 100% Guarantee

Free Download Real Questions & Answers **PDF** and **VCE** file from:

<https://www.lead4pass.com/70-534.html>

100% Passing Guarantee  
100% Money Back Assurance

Following Questions and Answers are all new published by Microsoft  
Official Exam Center

-  **Instant Download** After Purchase
-  **100% Money Back** Guarantee
-  **365 Days** Free Update
-  **800,000+** Satisfied Customers





### QUESTION 1

You have an existing server that runs Windows Server. You plan to create a base image of this server. You will use this base image to prepare several virtual servers for future use.

After the base image is prepared, you will capture it by using the Azure management portal. You must use the System Preparation Tool (Sysprep) to prepare the server so that the base image can be captured.

You need to prepare the server so that the base image can be captured. What should you do? To answer, configure the appropriate options in the dialog box in the answer area.

Hot Area:



Correct Answer:



### System Preparation Tool dialog box



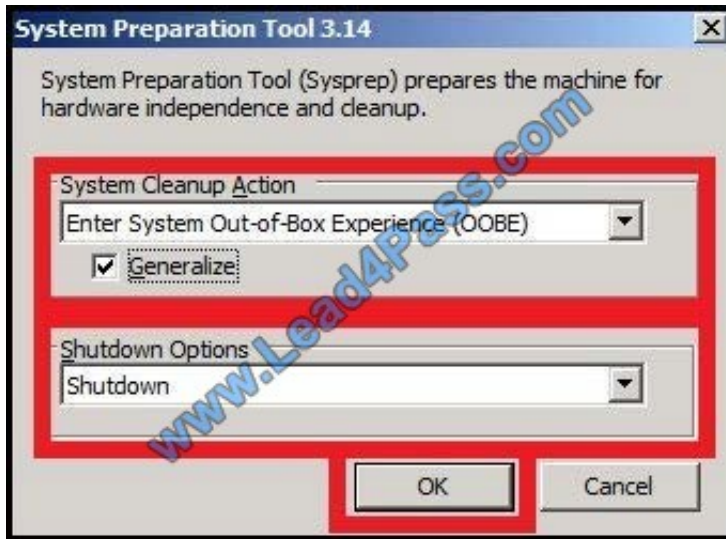
Capture the virtual machine

1. In the Azure portal, Connect to the virtual machine.
2. Open a Command Prompt window as an administrator.
3. Change the directory to %windir%\system32\sysprep, and then run sysprep.exe.
4. The System Preparation Tool dialog box appears. Do the following:

In System Cleanup Action, select Enter System Out-of-Box Experience (OOBE) and make sure that Generalize is checked.

In Shutdown Options, select Shutdown.

Click OK.



Etc.

References: <https://docs.microsoft.com/en-us/azure/virtualmachines/windows/classic/capture-image>

## QUESTION 2

You administer an Azure Web Site named contosoweb that uses a production database.

You deploy changes to contosoweb from a deployment slot named contosoweb-staging.

You discover issues in contosoweb that are affecting customer data. You need to resolve the issues in contosoweb while ensuring minimum downtime for users. You swap

contosoweb to contosoweb-staging.

Which four steps should you perform next in sequence? To answer, move the appropriate actions from the list of actions to the answer area and arrange them in the correct order.

Select and Place:



| Actions   |
|---|
| Swap contoso-web-staging to contoso-web.              |
| Point contoso-web to the production database.         |
| Point contoso-web-staging to the test database.       |
| Fix the issues in contoso-web.                        |
| Fix the issues in contoso-web-staging.                |
| Point contoso-web-staging to the production database. |
| Point contoso-web to the test database.               |

| Answer Area |
|-------------|
|             |

Correct Answer:

| Actions                                       |
|---|
|   |
| Point contoso-web to the production database. |
|   |
| Fix the issues in contoso-web.                |
|   |
|   |
| Point contoso-web to the test database.       |

| Answer Area   |
|---|
| Point contoso-web-staging to the test database.       |
| Fix the issues in contoso-web-staging.                |
| Point contoso-web-staging to the production database. |
| Swap contoso-web-staging to contoso-web.              |

QUESTION 3



You have a website that displays text, pictures, video files, and audio files. The website processes requests from countries and regions all over the world. You plan to migrate the website to the Azure platform. The website has the following requirements:

Encode, store, and stream audio and video at scale.

Load-balance communications with the website instance that is closest to the user's location.

Deliver content with high-bandwidth and low latency.

You need to recommend the technologies to implement the solution.

Which technologies should you recommend? To answer, drag the appropriate technology to the correct requirement. Each technology may be used once, more than once, or not at all. You may need to drag the split bar between panes or

scroll to view content.

Select and Place:

**Technologies**

- TrafficManager
- MediaServices
- Multifactor Authentication
- Service Bus
- Azure Active Directory
- Azure Content Delivery Network
- Windows Network Load Balancing
- Azure Blob Service

**Answer Area**

| Requirement                 | Technology |
|-----------------------------|------------|
| Encode media                | Technology |
| Load-balanced communication | Technology |
| Deliver content             | Technology |

Correct Answer:



### Technologies

- Multifactor Authentication
- Service Bus
- Azure Active Directory
- Windows Network Load Balancing
- Azure Blob Service

### Answer Area

| Requirement                 | Technology                     |
|-----------------------------|--------------------------------|
| Encode media                | MediaServices                  |
| Load-balanced communication | TrafficManager                 |
| Deliver content             | Azure Content Delivery Network |

#### \* MediaServices

Azure Media Services is being used to power consumer and enterprise streaming solutions worldwide. Combining powerful and highly scalable cloud-based encoding, encryption and steaming components, Azure Media Services is helping

customers with valuable and premium video content to easily reach larger audiences on today's most popular digital devices, such as tablets and mobile phones.

#### \* TrafficManager

#### \* Azure Content Delivery Network

The Azure Content Delivery Network (CDN) is designed to send audio, video, applications, images, and other files faster and more reliably to customers using servers that are closest to each user. This dramatically increases speed and availability, resulting in significant user experience improvements.

#### References:

<http://azure.microsoft.com/en-us/services/cdn/>

<http://azure.microsoft.com/en-gb/services/media-services/>

<http://azure.microsoft.com/en-us/services/traffic-manager/>

### QUESTION 4

You administer an Azure Active Directory (Azure AD) tenant. You add a custom application to the tenant. The application must be able to:

- \* Read data from the tenant directly.



\* Write data to the tenant on behalf of a user.

In the table below, identify the permission that must be granted to the application. Make only one selection in each column.

Hot Area:

| Permission                               | Application Permission   | Delegated Permission     |
|--|--------------------------|--------------------------|
| Read and write directory data.           | <input type="checkbox"/> | <input type="checkbox"/> |
| Read directory data.                     | <input type="checkbox"/> | <input type="checkbox"/> |
| Access your organization's directory.    | <input type="checkbox"/> | <input type="checkbox"/> |
| Enable sign-on and read users' profiles. | <input type="checkbox"/> | <input type="checkbox"/> |

Correct Answer:





| Permission                               | Application Permission              | Delegated Permission                |
|--|-------------------------------------|-------------------------------------|
| Read and write directory data.           | <input type="checkbox"/>            | <input checked="" type="checkbox"/> |
| Read directory data.                     | <input checked="" type="checkbox"/> | <input type="checkbox"/>            |
| Access your organization's directory.    | <input type="checkbox"/>            | <input type="checkbox"/>            |
| Enable sign-on and read users' profiles. | <input type="checkbox"/>            | <input type="checkbox"/>            |

Application Permission: Read directory data

The application must be able to Read data from the tenant directly.

Delegated Permission: Read and write Directory Data

The application must be able to write data to the tenant on behalf of a user.

As an administrator, you can also consent to an application's delegated permissions on behalf of all the users in your tenant. This will prevent the consent dialog from appearing for every user in the tenant. You can do this from the Azure portal from your application page.

From the Settings blade for your application, click Required Permissions and click on the Grant Permissions button.

References: <https://docs.microsoft.com/en-us/azure/active-directory/develop/activedirectory-integrating-applications>

### QUESTION 5

Your company has a subscription to Azure. You configure your contoso.com domain to use a private Certificate Authority. You deploy a web site named MyApp by using the Shared (Preview) web hosting plan. You need to ensure that clients are able to access the MyApp website by using https. What should you do?

- A. Back up the Site and import into a new website.
- B. Use the internal Certificate Authority and ensure that clients download the certificate chain.



- C. Add custom domain SSL support to your current web hosting plan.
- D. Change the web hosting plan to Standard

Correct Answer: D

The Basic or the Standard plan is required for SSL support for custom domains. References:  
<https://azure.microsoft.com/en-us/pricing/details/app-service/>

[70-534 PDF Dumps](#)

[70-534 VCE Dumps](#)

[70-534 Exam Questions](#)



To Read the [Whole Q&As](#), please purchase the [Complete Version](#) from [Our website](#).

## Try our product !

100% Guaranteed Success

100% Money Back Guarantee

365 Days Free Update

Instant Download After Purchase

24x7 Customer Support

Average 99.9% Success Rate

More than 800,000 Satisfied Customers Worldwide

Multi-Platform capabilities - [Windows](#), [Mac](#), [Android](#), [iPhone](#), [iPod](#), [iPad](#), [Kindle](#)

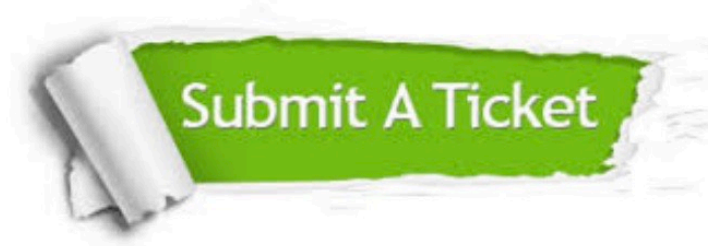
We provide exam PDF and VCE of Cisco, Microsoft, IBM, CompTIA, Oracle and other IT Certifications. You can view Vendor list of All Certification Exams offered:

<https://www.lead4pass.com/allproducts>

## Need Help

Please provide as much detail as possible so we can best assist you.

To update a previously submitted ticket:



|   |   |  |
|---|---|--|
|  <p><b>One Year Free Update</b><br/>Free update is available within One Year after your purchase. After One Year, you will get 50% discounts for updating. And we are proud to boast a 24/7 efficient Customer Support system via Email.</p> |  <p><b>Money Back Guarantee</b><br/>To ensure that you are spending on quality products, we provide 100% money back guarantee for 30 days from the date of purchase.</p> |  <p><b>Security &amp; Privacy</b><br/>We respect customer privacy. We use McAfee's security service to provide you with utmost security for your personal information &amp; peace of mind.</p> |
|---|---|--|

Any charges made through this site will appear as Global Simulators Limited.

All trademarks are the property of their respective owners.

Copyright © lead4pass, All Rights Reserved.