



70-511^{Q&As}

TS: Windows Applications Development with Microsoft .NET Framework 4

Pass Microsoft 70-511 Exam with 100% Guarantee

Free Download Real Questions & Answers **PDF** and **VCE** file from:

<https://www.lead4pass.com/70-511.html>

100% Passing Guarantee
100% Money Back Assurance

Following Questions and Answers are all new published by Microsoft Official Exam Center

-  **Instant Download** After Purchase
-  **100% Money Back** Guarantee
-  **365 Days** Free Update
-  **800,000+** Satisfied Customers





QUESTION 1

You are developing a Windows Presentation Foundation (WPF) application.

A window is defined in the following markup segment.

```
<Window x:Class="WpfApplication2.MainWindow"
  xmlns="..."
  xmlns:x="http://schemas.microsoft.com/winfx/2006/xaml">
  <Grid x:Name="grid1"/>
</Window>
```



You need to add a Windows Forms Button control to the window programmatically. Which code segment should you use?

- A. `WindowsFormsHost host = new WindowsFormsHost(); System.Windows.Forms.Button wfButton = new System.Windows.Forms.Button(); wfButton.Text = "Button"; host.Child = wfButton; grid1.Children.Add(host);`
- B. `WindowsFormsHost host = new WindowsFormsHost(); System.Windows.Controls.Button wfButton = new System.Windows.Controls.Button(); wfButton.Content = "Button"; grid1.Children.Add(wfButton);`
- C. `System.Windows.Controls.Button wfButton = new System.Windows.Controls.Button (); wfButton.Content = "Button"; grid1.Children.Add(wfButton);`
- D. `WindowsFormsHost host = new WindowsFormsHost(); System.Windows.Forms.Button wfButton = new System.Windows.Forms.Button(); wfButton.Text = "Button"; host.FindName("Button"); grid1.Children.Add(host);`

Correct Answer: A

QUESTION 2

You use Microsoft .NET Framework 4 to create a Windows Presentation Framework (WPF) application.

The application contains a DockPanel named DockPanel1. DockPanel1 contains a ListBox named List1 and a Button named Button 1.

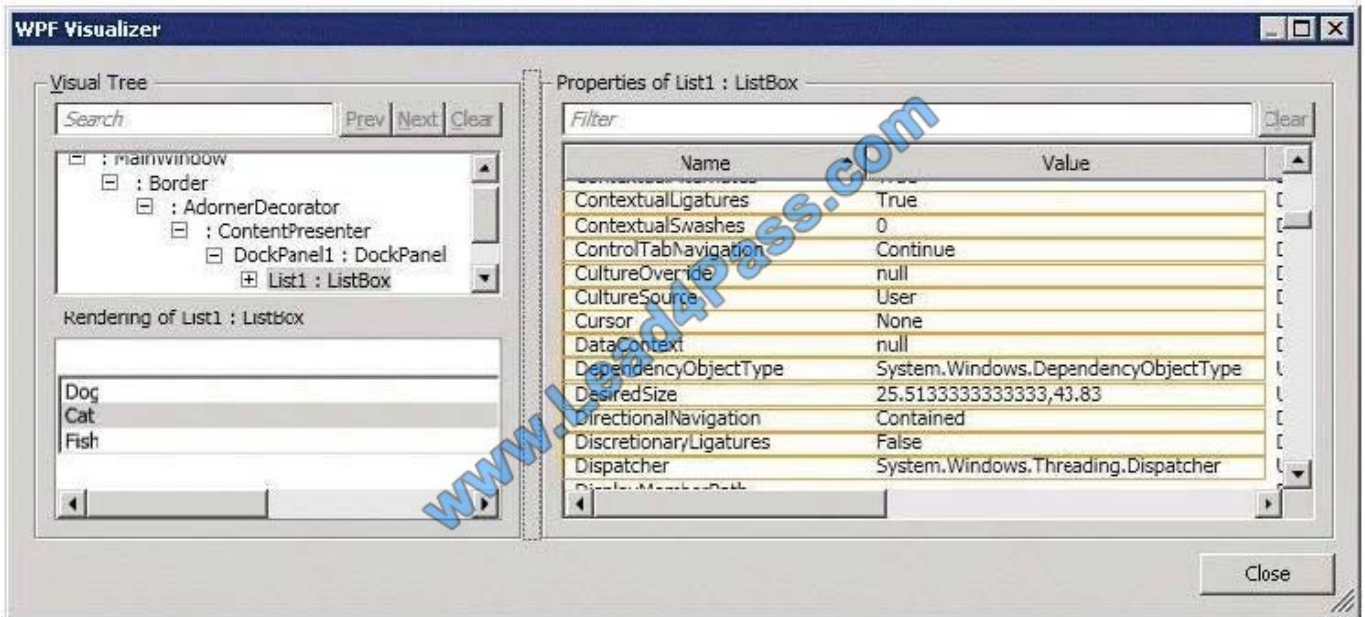
End-users discover that when they run the application, their mouse pointer disappears when they hover over List1.

You run the application in debug mode and open the WPF Tree Visualizer.

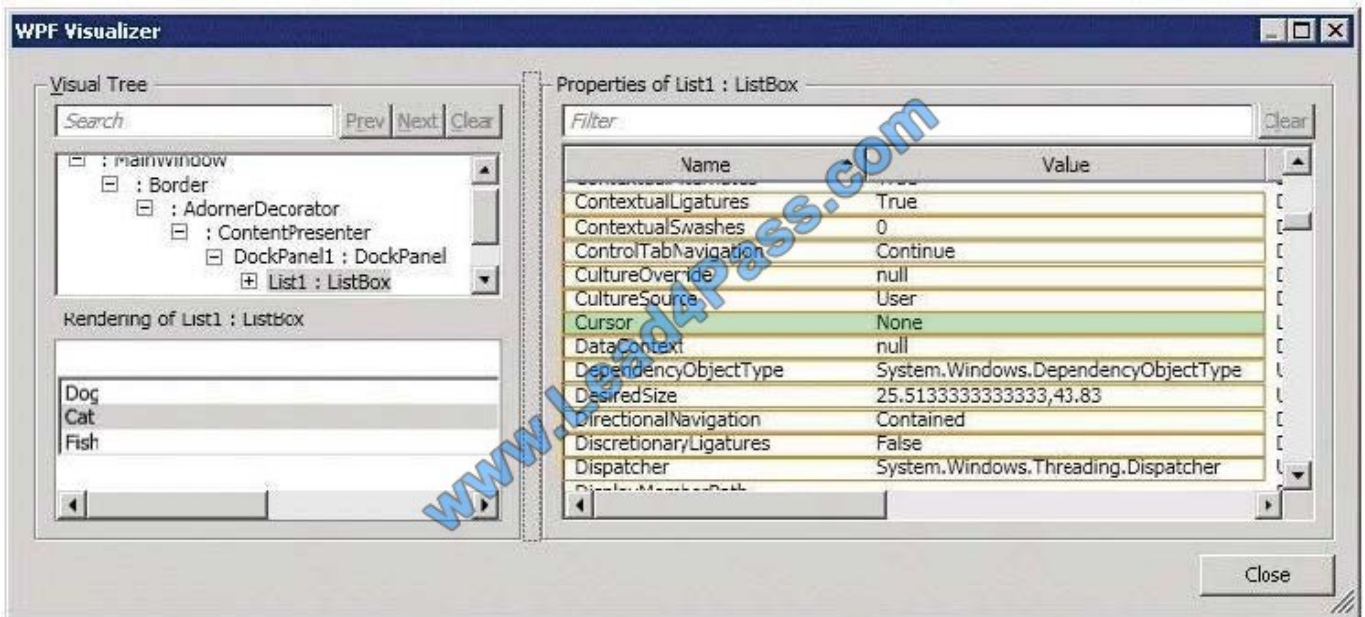
You need to identify which property causes the issue.

Which property should you identify? (To answer, select the appropriate property in the answer area.)

Point and Shoot:



Correct Answer:



QUESTION 3

You are deploying a Windows Forms application. You use the Publishing wizard within Visual Studio to configure ClickOnce options.

You need to ensure that a custom zone is created with specific permissions within the security tab of Visual Studio. What should you do?

- A. Enable the ClickOnce security settings. Then edit the deployment.application file.



B. Disable the ClickOnce security settings. Then edit the deployment.application file.

C. Enable the ClickOnce security settings. Choose the "This is a Full Trust Application" radio button. Then edit the app.manifest file.

D. Enable the ClickOnce security settings. Choose the "This is a Partial Trust Application" radio button. Then edit the app.manifest file.

Correct Answer: D

QUESTION 4

You are developing a Windows Presentation Foundation (WPF) application. You add a TextBox control to the design surface and bind it to an underlying window resource named dsGiftCertificate. The control uses the binding XAML as follows.

You need to provide a custom error message in the tooltip of the TextBox when the user leaves the textbox.

Which two actions should you perform? (Each correct answer presents part of the solution. Choose two.)

A. Implement the INotifyPropertyChanged interface. Use the indexer for the custom validation and error message.

B. Update the binding source as follows.

C. Implement the IDataErrorInfo interface. Use the indexer for the custom validation and error message.

D. Update the binding source as follows.

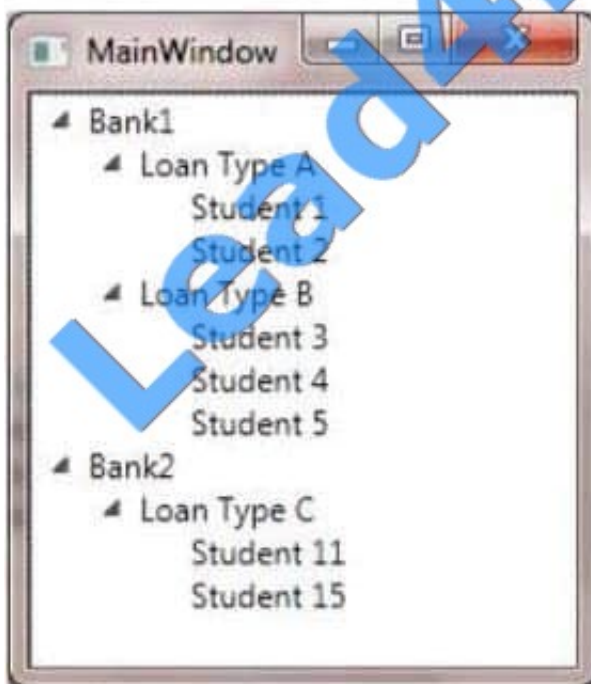
Correct Answer: BC

QUESTION 5

You are developing a Windows Presentation Foundation (WPF) application to display loan types by bank and students by loan type. You add the following markup segment to the MainWindow.xaml file. (Line numbers are included for reference only.)



```
01 <Window.Resources>
02   <DataTemplate x:Key="Students"
03     DataType="{x:Type mod:Student}">
04     <TextBlock Text="{Binding FullName}" />
05   </DataTemplate>
06   <HierarchicalDataTemplate x:Key="LoanList"
07     DataType="{x:Type mod:Loan}"
08     ItemsSource="{Binding Path=Students}"
09     ItemTemplate="{StaticResource ResourceKey= }">
10     <TextBlock Text="{Binding LoanName}" />
11   </HierarchicalDataTemplate>
12   <HierarchicalDataTemplate x:Key="BankList"
13     DataType="{x:Type mod:Lender}"
14     ItemsSource="{Binding Path=StudentLoans}"
15     ItemTemplate="{StaticResource ResourceKey= }">
16     <TextBlock Text="{Binding LenderName}" />
17   </HierarchicalDataTemplate>
18 </Window.Resources>
19 <Grid>
20   <TreeView x:Name="treeLoan"
21     ItemTemplate=
22     "{StaticResource ResourceKey=BankList}"/>
23 </Grid>
```



You need to ensure that the data appears in hierarchical form in a TreeView control. What should you do?

A. At line 09, set the Resource Key to Students. At line 15, set the Resource Key to Loan List



B. At line 09, set the Resource Key to BankList. At line 15, set the Resource Key to Lender.

C. At line 09, set the Resource Key to LoanList. At line 15, set the Resource Key to Students.

D. At line 09, set the Resource Key to Lender. At line 15, set the Resource Key to BankList.

Correct Answer: A

[Latest 70-511 Dumps](#)

[70-511 PDF Dumps](#)

[70-511 Braindumps](#)



To Read the [Whole Q&As](#), please purchase the [Complete Version](#) from [Our website](#).

Try our product !

100% Guaranteed Success

100% Money Back Guarantee

365 Days Free Update

Instant Download After Purchase

24x7 Customer Support

Average 99.9% Success Rate

More than 800,000 Satisfied Customers Worldwide

Multi-Platform capabilities - [Windows](#), [Mac](#), [Android](#), [iPhone](#), [iPod](#), [iPad](#), [Kindle](#)

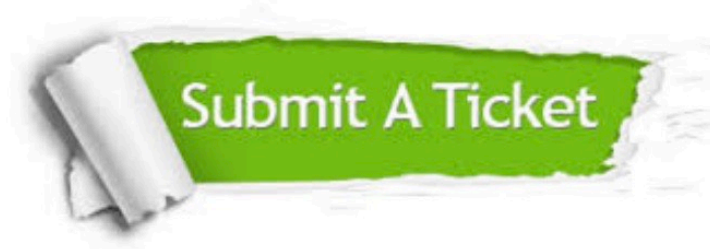
We provide exam PDF and VCE of Cisco, Microsoft, IBM, CompTIA, Oracle and other IT Certifications. You can view Vendor list of All Certification Exams offered:

<https://www.lead4pass.com/allproducts>

Need Help

Please provide as much detail as possible so we can best assist you.

To update a previously submitted ticket:



 <p>One Year Free Update Free update is available within One Year after your purchase. After One Year, you will get 50% discounts for updating. And we are proud to boast a 24/7 efficient Customer Support system via Email.</p>	 <p>Money Back Guarantee To ensure that you are spending on quality products, we provide 100% money back guarantee for 30 days from the date of purchase.</p>	 <p>Security & Privacy We respect customer privacy. We use McAfee's security service to provide you with utmost security for your personal information & peace of mind.</p>
---	---	--

Any charges made through this site will appear as Global Simulators Limited.

All trademarks are the property of their respective owners.

Copyright © lead4pass, All Rights Reserved.