



# 70-497<sup>Q&As</sup>

Software Testing with Visual Studio

## Pass Microsoft 70-497 Exam with 100% Guarantee

Free Download Real Questions & Answers **PDF** and **VCE** file from:

<https://www.lead4pass.com/70-497.html>

100% Passing Guarantee  
100% Money Back Assurance

Following Questions and Answers are all new published by Microsoft  
Official Exam Center

-  **Instant Download** After Purchase
-  **100% Money Back** Guarantee
-  **365 Days** Free Update
-  **800,000+** Satisfied Customers





### QUESTION 1

You are using Microsoft Test Manager (MTM).

Your company would like to support the Windows Server 2008 operating system for the application being tested.

You need to add Windows Server 2008 as a new value to the operating system configuration variable.

What should you do? (To answer, move the four appropriate actions from the list of actions to the answer area and arrange them in the correct order.)

Select and Place:

The screenshot shows the Microsoft Test Manager interface. On the left, there is a list of five actions in yellow boxes: "Click **Save configuration variables.**", "Select the **Operating system configuration** variable.", "Select the appropriate test configuration.", "Type **Windows Server 2008** in the Allowed values option.", and "Click **Manage Configuration Variables.**". On the right, there is an "Answer Area" which is currently empty. A watermark "www.Lead4Pass.com" is visible across the interface.

Correct Answer:

The screenshot shows the Microsoft Test Manager interface with the correct answer sequence. The "Answer Area" on the right now contains three actions in yellow boxes: "Select the **Operating system configuration** variable.", "Type **Windows Server 2008** in the Allowed values option.", and "Click **Save configuration variables.**". The remaining two actions from the original list, "Select the appropriate test configuration." and "Click **Manage Configuration Variables.**", are still in the list on the left. A watermark "www.Lead4Pass.com" is visible across the interface.

Note:

To update the existing configuration variable for a test plan

1. Open Microsoft Test Manager.

To display the Microsoft Test Manager window, click Start, and then click All Programs. Point to Microsoft Visual Studio 2010 and then click Microsoft Test Manager 2010.

2. To display the Test Configuration Manager window, follow these steps:



a. From the Testing Center, click Plan and then click Contents.

The Contents pane is displayed.

b. Click the drop-down arrow next to Default Configurations in the test suite details pane.

The Default configurations for new test cases dialog box is displayed.

c. Click Manage.

– or –

From the Testing Center, click Organize and then click Test Configuration Manager.

The Test Configuration Manager pane is displayed.

3. Select the configuration that has the configuration variable that you want to update.

4. Click Manage configuration variable.

The Manage Configuration Variables box is displayed.

5. On the left pane, select the variable that you want to update.

6. A list of allowed values for the selected variable is displayed on the right side pane.

7. From the list of the allowed values, select the value that you want to update.

8. Type the new value.

9. Click Save configuration variables.

Reference: How to: Update Test Configurations

---

## QUESTION 2

You are managing test cases by using Microsoft Test Manager (MTM).

You create a new configuration.

You need to select the new configuration for all test cases in a test suite.

What are two possible ways to achieve this goal? (Each correct answer presents a complete solution. Choose two.)

A. Select the new configuration as the default configuration for the test suite.

B. Select the test suite and use Configurations to select the new configuration for the test suite.

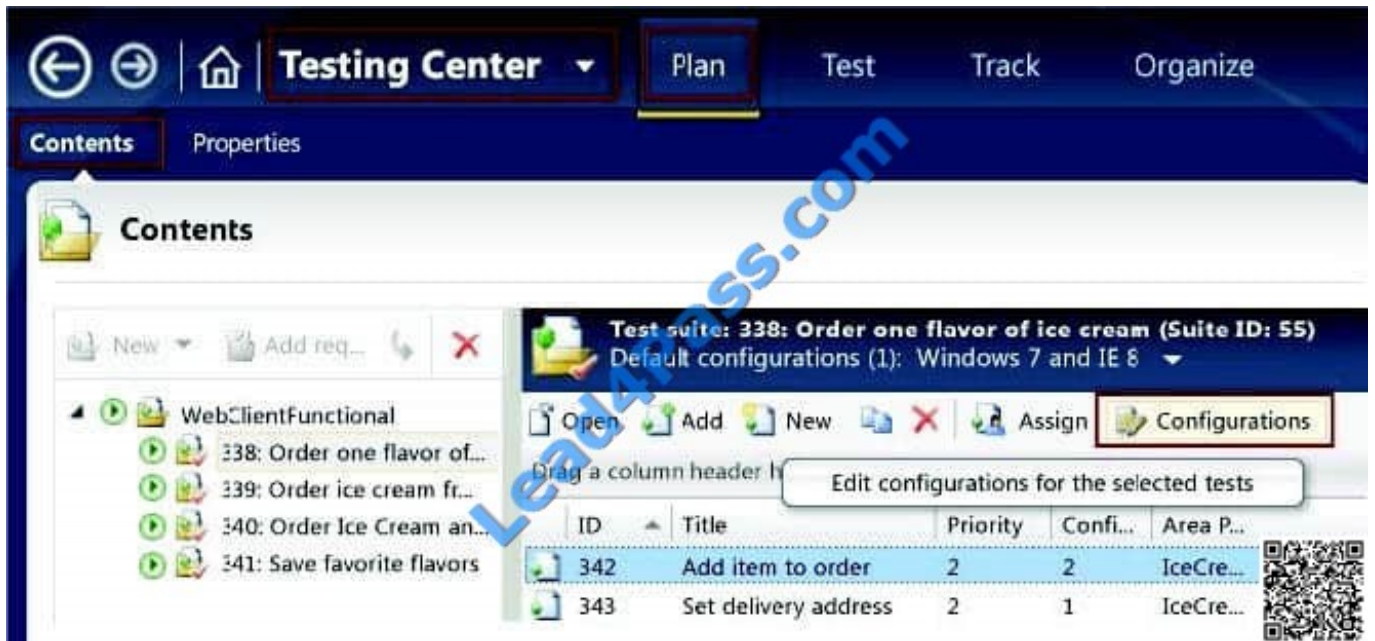
C. Select all of the test cases in the test suite and use Configurations to select the new configuration for the selected tests.

D. Select the test suite and use Select test configurations for all tests to select the new configuration.

Correct Answer: AC



C: In the test plan, you can set the configurations to be used for one or more test cases:



A: Set the default configurations for your test plan

Instead of setting the configurations for each test case separately, set the default configurations for in the properties of your test plan. The defaults apply both to new test cases and to test cases that you copy from a previous plan.

To set the defaults, choose Testing Center, Plan, Contents. Select the test plan at the root of the tree. Then choose the drop-down selection at Default configurations.



Reference: Test Configurations - specifying test platforms

### QUESTION 3



You are using Microsoft Test Manager (MTM) to perform exploratory testing.

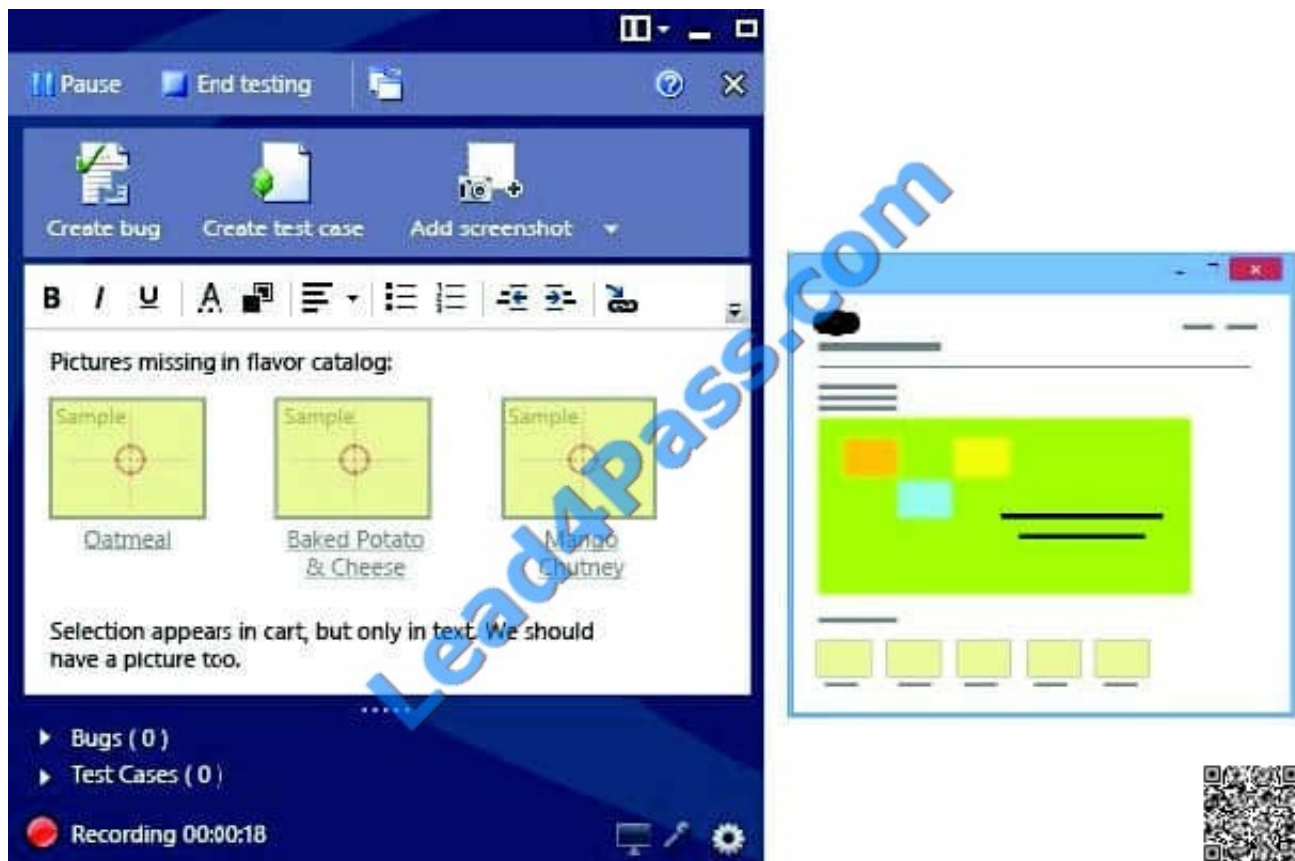
You need to insert an image into the comment area for the test run.

What are two possible ways to accomplish this goal? (Each correct answer presents a complete solution. Choose two.)

- A. Use the Add screenshot tool in the exploratory test runner and drag the selection box over the area of the screen you want to capture.
- B. Capture the image you want to insert by using your favorite screen capture utility and paste the image into the comment area of the exploratory testing window.
- C. Capture the image you want to insert by using your favorite screen capture utility and save the file to disk. Add the image as an attachment to the test run.
- D. Capture the image you want to insert by using your favorite screen capture utility. Drag and drop the file onto the comment area from the Windows Explorer.

Correct Answer: AC

A: While you work with the application, add comments and screenshots in the Test Runner window.



C: \* Microsoft Test Manager (MTM) helps you by recording the actions you perform as you work with your application. You can also record screenshots, comments, file attachments, audio narration and screen video.

#### QUESTION 4



You are using Microsoft Test Manager (MTM). Your development team is using Team Foundation Server (TFS) 2012 to associate requirements with source code and to automate builds.

Your team has been testing against an old build. You want to assign a more recent automated build to the test plan.

You need to review the requirements that have been affected between the current build and the new build before assigning it to your test plan.

What should you do?

- A. In the Properties View of the Plan activity, click Modify the Build In Use. Select the appropriate build in the Available builds. Review the Associated work items between selected builds list.
- B. Set up a check-in policy that will force an association of a work item to the changeset.
- C. In the Assign Build view of the Track tab, click Modify. In Filter for builds, select the appropriate build to preview the list of work items.
- D. In the Queries view of the Track activity, create a custom query that lists all requirements that have the Fixed in Build field set to the new build. Run the build and review the results.

Correct Answer: A

To select from the build candidates that you want to consider using for your test plan, you have to select a build filter for your test plan. After you have selected the build you are currently using to test, you can select a later build to see which work items have been associated with each of the builds between these two selected builds, as shown in the following illustration.

Change the build filter to select a different build definition and build quality

The latest build available to use for testing

Select this build to be the build that testers should now use

The build you are currently using to test your application

Work items that are associated with each build are displayed

Associated work items:

ID	Title	Work Item Type	State	Changeset	Associ...
2413	Items nct added...	Bug	Resolved	72	Retail...



Reference: Determining Which Builds Have Bug Fixes, New Features, or Requirements

## QUESTION 5

You plan to conduct a test for a multi-tier ASP.NET website using Microsoft Test Manager (MTM). You have created a test plan named QA Release 1.0. You also have created a test setting for the QA Release 1.0 test plan with the Database, Web Client, and Web Server roles.

The QA Release 1.0 test plan must specify that test runs:

Collect specific diagnostic trace information to help analyze bugs that are difficult to reproduce, and

Collect information about which methods of your applications code were used when a test case was run.

You need to configure the QA Release 1.0 test plan to meet these requirements.

What should you do?

- A. Enable and configure the IntelliTrace, ASP.NET Client Proxy for IntelliTrace and Test Impact diagnostic data adapter settings.
- B. Enable and configure the IntelliTrace, ASP.NET profiler, and Event log diagnostic data adapter settings.
- C. Enable and configure the IntelliTrace, ASP.NET Client Proxy for IntelliTrace and Test Impact, and ASP.NET profiler diagnostic data adapter settings.
- D. Enable and configure the ASP.NET profiler, Code coverage, and IntelliTrace diagnostic data adapter settings.

Correct Answer: A

Test Settings: Data and Diagnostics

\*

(needed) IntelliTrace : You can configure the diagnostic data adapter for IntelliTrace to collect specific diagnostic trace information to help isolate bugs that are difficult to reproduce

\*

(needed for Web Client Web Server traffic) ASP.NET Client Proxy for IntelliTrace and Test Impact: This proxy allows you to collect information about the http calls from a client to a Web server for the IntelliTrace and Test Impact diagnostic data adapters.

\*

(needed) Test impact : You can collect information about which methods of your applications code were used when a test case was running. This information can be used together with changes to the application code made by developers to determine which tests were impacted by those development changes.

Reference: Specifying Test Settings for Visual Studio Tests



To Read the [Whole Q&As](#), please purchase the [Complete Version](#) from [Our website](#).

## Try our product !

100% Guaranteed Success

100% Money Back Guarantee

365 Days Free Update

Instant Download After Purchase

24x7 Customer Support

Average 99.9% Success Rate

More than 800,000 Satisfied Customers Worldwide

Multi-Platform capabilities - [Windows](#), [Mac](#), [Android](#), [iPhone](#), [iPod](#), [iPad](#), [Kindle](#)

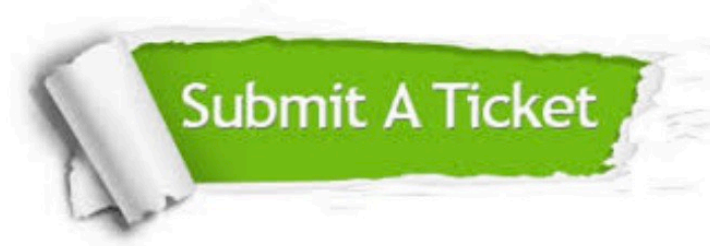
We provide exam PDF and VCE of Cisco, Microsoft, IBM, CompTIA, Oracle and other IT Certifications. You can view Vendor list of All Certification Exams offered:

<https://www.lead4pass.com/allproducts>

## Need Help

Please provide as much detail as possible so we can best assist you.

To update a previously submitted ticket:



 <p><b>One Year Free Update</b> Free update is available within One Year after your purchase. After One Year, you will get 50% discounts for updating. And we are proud to boast a 24/7 efficient Customer Support system via Email.</p>	 <p><b>Money Back Guarantee</b> To ensure that you are spending on quality products, we provide 100% money back guarantee for 30 days from the date of purchase.</p>	 <p><b>Security &amp; Privacy</b> We respect customer privacy. We use McAfee's security service to provide you with utmost security for your personal information &amp; peace of mind.</p>
---	---	--

Any charges made through this site will appear as Global Simulators Limited.

All trademarks are the property of their respective owners.

Copyright © lead4pass, All Rights Reserved.