



70-497^{Q&As}

Software Testing with Visual Studio

Pass Microsoft 70-497 Exam with 100% Guarantee

Free Download Real Questions & Answers **PDF** and **VCE** file from:

<https://www.lead4pass.com/70-497.html>

100% Passing Guarantee
100% Money Back Assurance

Following Questions and Answers are all new published by Microsoft
Official Exam Center

-  **Instant Download** After Purchase
-  **100% Money Back** Guarantee
-  **365 Days** Free Update
-  **800,000+** Satisfied Customers





QUESTION 1

You are a test developer using Microsoft Test Manager (MTM).

You are developing a test case that must be run multiple times with different input values for a specific field each time. You have a list of values that will be used for the input.

You need to modify the test to enter each value into the field.

What should you do?

- A. Insert a parameter into the Action column of the test step and enter the input values into the Parameter Values pane.
- B. Insert a parameter into the Expected Results column of the test step and enter the input values into Parameter values pane.
- C. Insert a parameter into the Action column of the test step.
- D. Create test steps for each input value in the Action column.

Correct Answer: A

Add parameters to a test case

Create a parameter by typing a name preceded by "@" in the actions and expected results of your test steps.



Add multiple items to cart

Iteration: ice cream sales\Release 1\Sprint 2

STATUS		DETAILS	
Assigned To		Automation status	Not Automated
State	Design	Area	ice cream sales
Priority	2		


STEPS SUMMARY TESTED BACKLOG ITEMS LINKS ATTACHMENTS ASSOCIATED AUTOMATION

Action	Expected result	Attachment
1. Choose potato	Product is displayed	
2. Select @size Enter @quantity Click Add	Cart summary shows @quantity items	
3. Open cart	Cart summary shows @quantity of @size	

Click or type here to add a step

Parameter values

quantity	size
1	Large
2	Large
1	Medium



Note: When you write a manual test, you often want to specify that the test should be repeated several times with different test data. For example, if your users can add different quantities of a product to a shopping cart, then you want to

check that a quantity of 200 works just as well as a quantity of 1.

To do this, you insert parameters in your test steps. Along with the test steps, you provide a table of parameter values.

Reference: Repeat a test with different data

QUESTION 2

You are the lead software tester for Contoso, Ltd. Your team uses Microsoft Visual Studio Premium 2012 to design and test all company software.

You are developing manual tests for a test plan for a new website. However, test steps that are used to log on to the application are being used by many test cases.

You need to create shared test steps.



Which three actions should you perform in sequence? To answer, move the appropriate actions from the list of actions to the answer area and arrange them in the correct order.

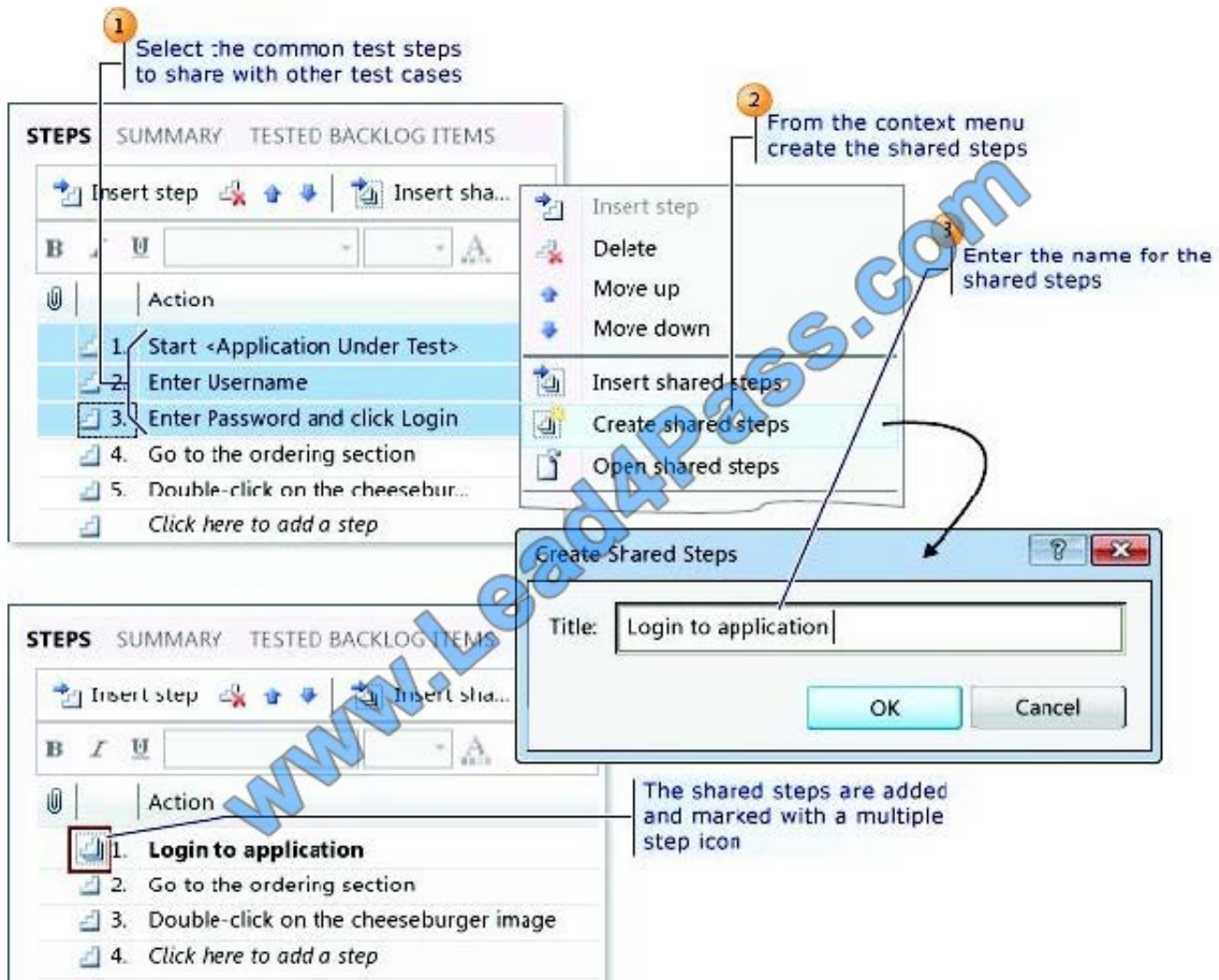
Select and Place:

Actions	Answer Area
Create a new test case, and add test steps.	
Highlight and right-click on the test steps, and select Create shared steps .	
Create common test steps to log on to the application.	
Give the shared steps a name.	

Correct Answer:

Actions	Answer Area
	Create a new test case, and add test steps.
	Highlight and right-click on the test steps, and select Create shared steps .
Create common test steps to log on to the application.	Give the shared steps a name.

Note:



Reference: How to: Share Common Test Case Steps Using Shared Steps

QUESTION 3

You are using Microsoft Test Manager (MTM). You are using the Microsoft Visual Studio Scrum 1.0 process template.

You are developing a test from an engineering document that has detailed verification information.

You need to ensure that the document is directly accessible whenever a tester runs a specific step.

What are two possible ways to accomplish this goal? (Each correct answer presents a complete solution. Choose two.)

- A. Add a test step attachment.
- B. Add a test case attachment.
- C. Add a tested backlog items link.
- D. Add a test case link.

Correct Answer: AB



B: Adding Details, Attachments, or Hyperlinks to a Test Case You can add information to a test case that provides more information to implement the test case.

You add details to test cases in the following ways:

*

In the Description or History field, type information.

*

Attach a file.

For example, you can attach an e-mail thread, a document, an image, a log file, or another type of file.

*

Add a hyperlink to Web site or to a file that is stored on a server or Web site.

QUESTION 4

You are using Microsoft Test Manager (MTM) to perform exploratory testing.

You need to test a Windows Store application.

You need to configure the connection to the remote device running the Windows Store application.

What should you do? (To answer, move the three appropriate actions from the list of actions to the answer area and arrange them in the correct order.)

Select and Place:

Answer Area

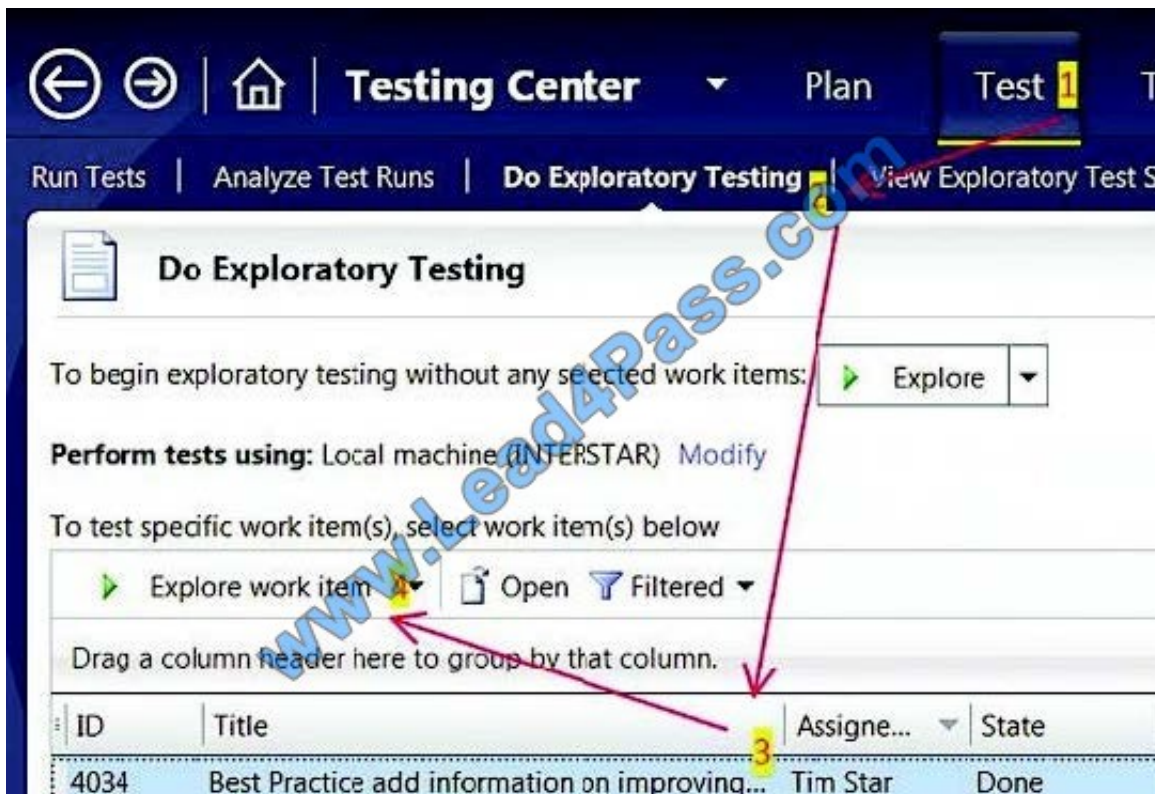
- Use the **Modify** link to configure the device.
- From the exploratory test window, use the **Connect to device** link.
- Enter the device name and port and select **Save**.
- From the Plan Activity, edit the test plan Properties.
- From the Test Center Group, use the **Do Exploratory Testing** menu item.
- Enter the URL of the Windows Store application.

Correct Answer:



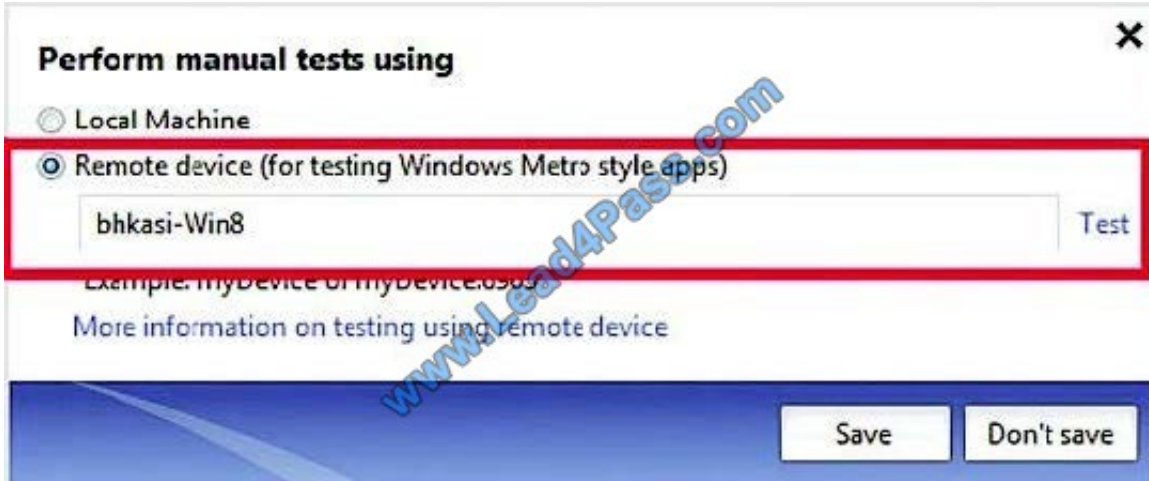
Answer Area	
From the exploratory test window, use the Connect to device link.	From the Test Center Group, use the Do Exploratory Testing menu item.
From the Plan Activity, edit the test plan Properties.	Use the Modify link to configure the device.
Enter the URL of the Windows Store application.	Enter the device name and port and select Save .

Note:



Before testing Windows Store applications, ensure the Microsoft Test Tools Adapter service is enabled.

Once the service is enabled, in MTM 2012, connect to the test plan where you have your test suite. In the Testing Center, click the Modify link next to "Perform manual tests using" to specify the remote device on which to run manual tests. Select the "Remote device..." option and enter the name or IP address of the device you want to test. Click Test to test the connection and then save your changes.



QUESTION 5

You are using Microsoft Test Manager (MTM). You are using the Microsoft Visual Studio Scrum 1.0 process template.

Your client has added new capabilities to a product in development, which necessitates a major change to existing test cases. The product owner has created a new product backlog item (PBI) and has provided you a link to a document that

explains these new requirements.

You need to provide easy access to the requirements document from the test cases.

Which two actions should you perform? (Each correct answer presents part of the solution. Choose two.)

- A. From the Test Suite window, add the requirement document by using Add Requirements.
- B. From the Links tab, link the requirements document to the PBI.
- C. From the Test Plan Manager, add a link to the PBI.
- D. For each test case, use the Tested Backlog Items tab to add a link to the PBI.

Correct Answer: AD

A: Add requirements to a test plan

Typically, you create a test plan for each iteration and area of your team project. Near the start of the iteration, you add the product backlog items, user stories or requirements of that iteration to the test plan.

1.

In Microsoft Test Manager, choose Testing Center, Plan, Contents.

2.

Choose Add Requirements.

3.



In Add existing requirements, edit the query to find the requirements you want.

For example, you might add a clause to select the current Iteration Path. Or, you might choose requirements that are not already linked to test cases.

4.

Choose Run to run the query and display requirements.

5.

Select the requirements you want to add.

The screenshot shows the 'Testing Center' interface. The top navigation bar includes a home icon and the text 'Testing Center'. Below this, there are tabs for 'Contents' and 'Properties'. The 'Contents' tab is active, showing a tree view with a folder named 'Beta Test Plan' and a requirement item '2479: Add Items to Shopping Cart'. A callout box labeled '1' points to the 'Add requirements' button, with the text 'Add an existing requirement to the test plan'. Below this, a 'Test suite: 247... (Requirement 2479)' window is open, showing 'Default configurations (1): Vista a...' and 'State: In progress'. The window has a toolbar with 'Open', 'Add', 'New', 'Assign', and 'Configur...' buttons. Below the toolbar is a table with columns 'ID', 'Title', and 'Priority'. The table contains two rows: one with ID 2493 and Title 'Add 100 items to shopping cart', and another with ID 2496 and Title 'Add item to shopping cart'. A callout box labeled '2' points to the 'Add' button, with the text 'Link other existing test cases to this requirement'. A callout box labeled '3' points to the 'New' button, with the text 'Create new test cases linked to this requirement'. A QR code is visible in the bottom right corner of the window. A large blue watermark 'Lead4Pass.com' is overlaid on the image.

Existing test cases linked to this requirement are displayed

ID	Title	Priority
2493	Add 100 items to shopping cart	2
2496	Add item to shopping cart	2

A:

D: The Tested Backlog Items tab lists all the PBIs and bugs in a test case. By linking PBIs and bugs to test cases, the team can track the progress made in testing each item.



Reference: Scrum process template work item types and workflow Creating Tests for Product Backlog Items, User Stories, or Requirements

[70-497 PDF Dumps](#)

[70-497 VCE Dumps](#)

[70-497 Practice Test](#)



To Read the [Whole Q&As](#), please purchase the [Complete Version](#) from [Our website](#).

Try our product !

100% Guaranteed Success

100% Money Back Guarantee

365 Days Free Update

Instant Download After Purchase

24x7 Customer Support

Average 99.9% Success Rate

More than 800,000 Satisfied Customers Worldwide

Multi-Platform capabilities - [Windows](#), [Mac](#), [Android](#), [iPhone](#), [iPod](#), [iPad](#), [Kindle](#)

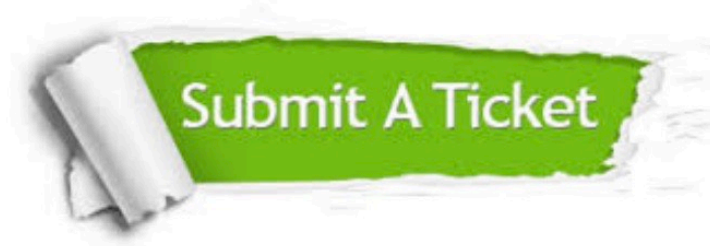
We provide exam PDF and VCE of Cisco, Microsoft, IBM, CompTIA, Oracle and other IT Certifications. You can view Vendor list of All Certification Exams offered:

<https://www.lead4pass.com/allproducts>

Need Help

Please provide as much detail as possible so we can best assist you.

To update a previously submitted ticket:



 <p>One Year Free Update Free update is available within One Year after your purchase. After One Year, you will get 50% discounts for updating. And we are proud to boast a 24/7 efficient Customer Support system via Email.</p>	 <p>Money Back Guarantee To ensure that you are spending on quality products, we provide 100% money back guarantee for 30 days from the date of purchase.</p>	 <p>Security & Privacy We respect customer privacy. We use McAfee's security service to provide you with utmost security for your personal information & peace of mind.</p>
---	---	--

Any charges made through this site will appear as Global Simulators Limited.

All trademarks are the property of their respective owners.

Copyright © lead4pass, All Rights Reserved.